

广东星坤科技股份有限公司

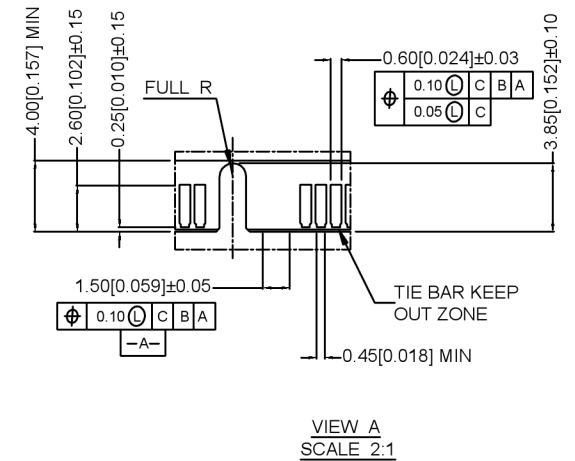
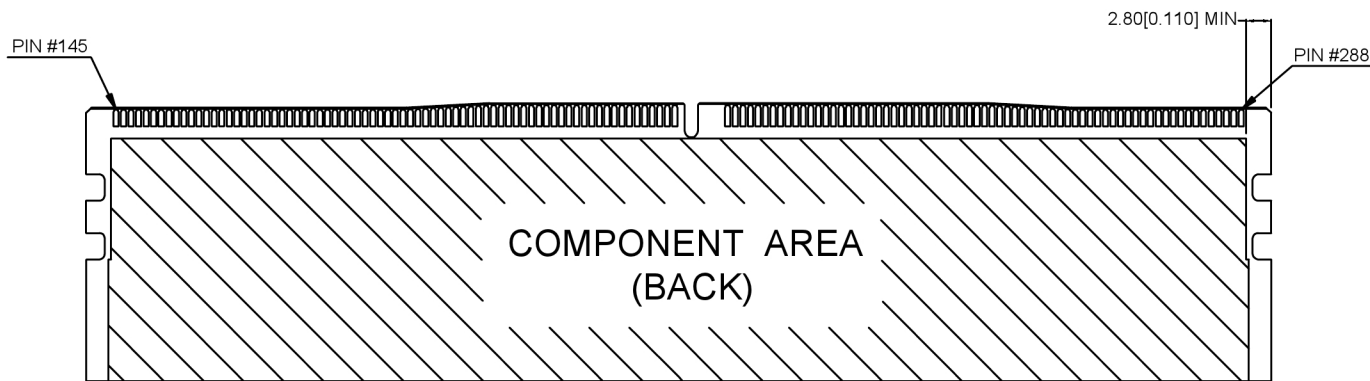
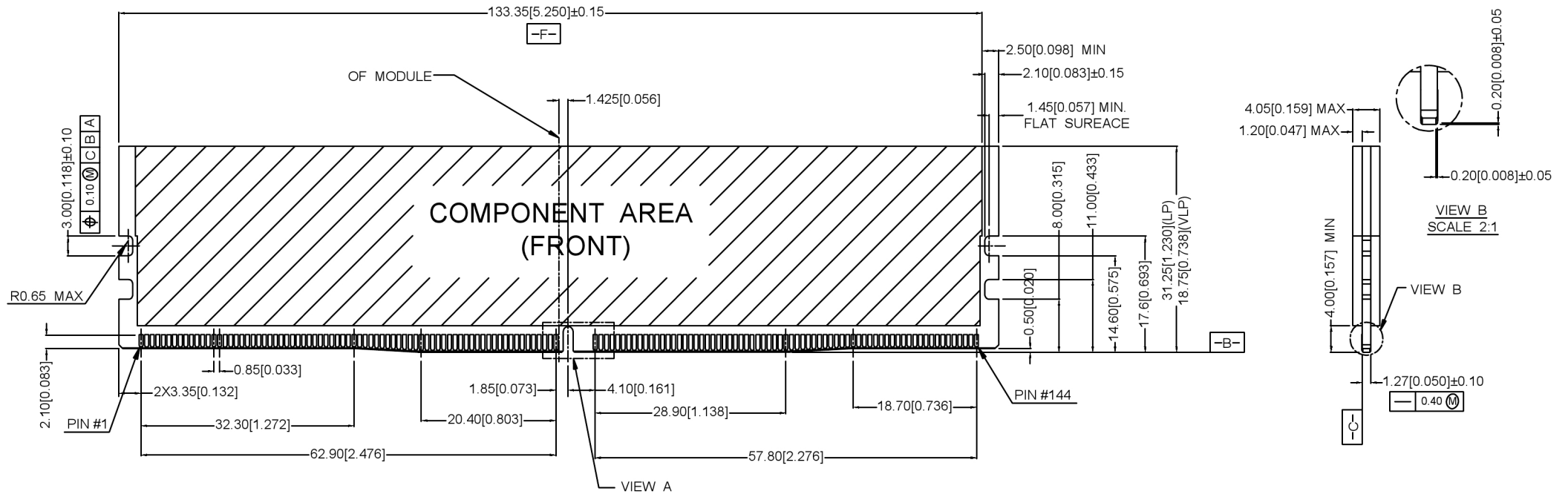
Δ	日期
Δ	日期
Δ	日期
Δ	日期

文件工程章

MARK	DESCRIPTION	DATE	REVISED	APPROVED	UNSPECIFIED TOLERANCES
	REVISIONS				
					ANGLAR ±5°
					L ≤ 4 ±0.2
					4 < L ≤ 16 ±0.3
					16 < L ≤ 63 ±0.4
					L > 63 ±0.5



DSND	SCALE: N/A	MODEL TYPE:
DWN	VIEW:	PART NO.: X9414WWS-288T2-9TV15
CHKD	UNIT: mm/in	DWG NO.: X-X9414WWS-288T2-9TV15
APPD	SIZE: A4	WEIGHT SHEET REVISION
XKB INDUSTRIAL PRECISION CO., LIMITED		1/1 A0

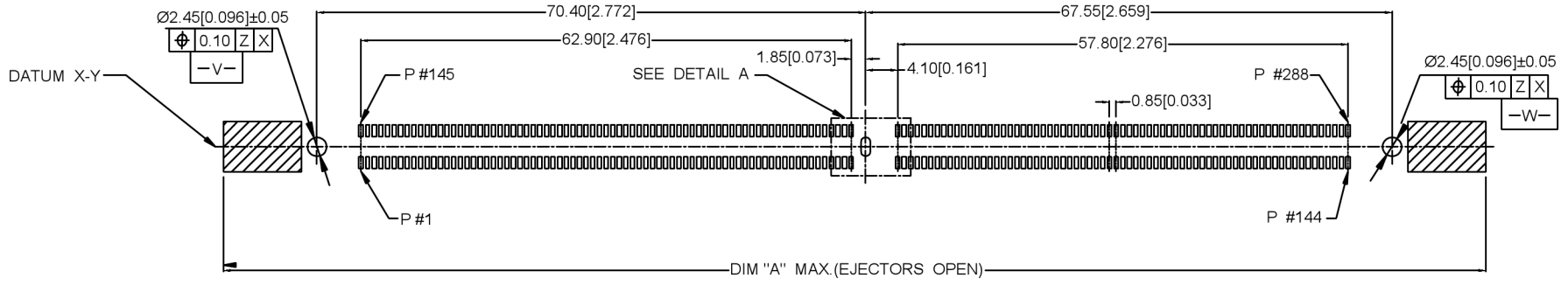
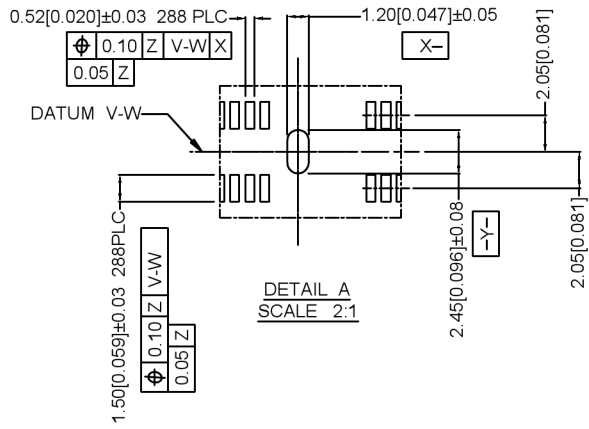


广东星坤科技股份有限公司

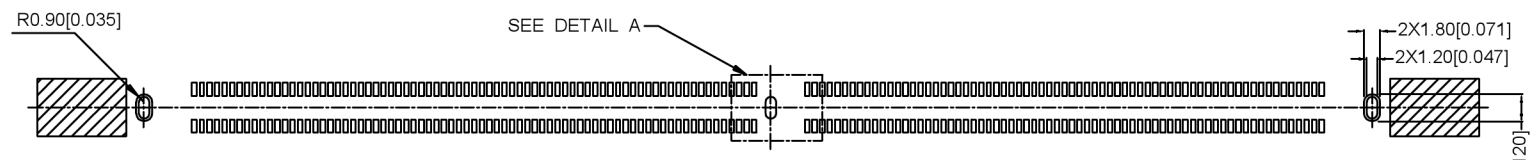
文件工程章

MARK	DESCRIPTION	DATE	REVISED	APPROVED	UNSPECIFIED TOLERANCES
Δx	日期				
Δy					
Δz					
	REVISIONS				

DSND		SCALE: N/A	MODEL TYPE:
DWN		VIEW:	PART NO.: X9414WVS-288T2-9TV15
CHKD		UNIT: mm/in	DWG NO.: X-X9414WVS-288T2-9TV15
APPD		SIZE: A4	WEIGHT SHEET REVISION
XKB INDUSTRIAL PRECISION CO., LIMITED			1/1 A0



RECOMMENDED PCB LAYOUT (TOP VIEW)
FOR 3 BOARDLOCKS



RECOMMENDED PCB LAYOUT (TOP VIEW)
FOR 3 TABS

-Z-

广东星坤科技股份有限公司

Δ#	日期
ΔX	日期
ΔX	日期

文件工程章

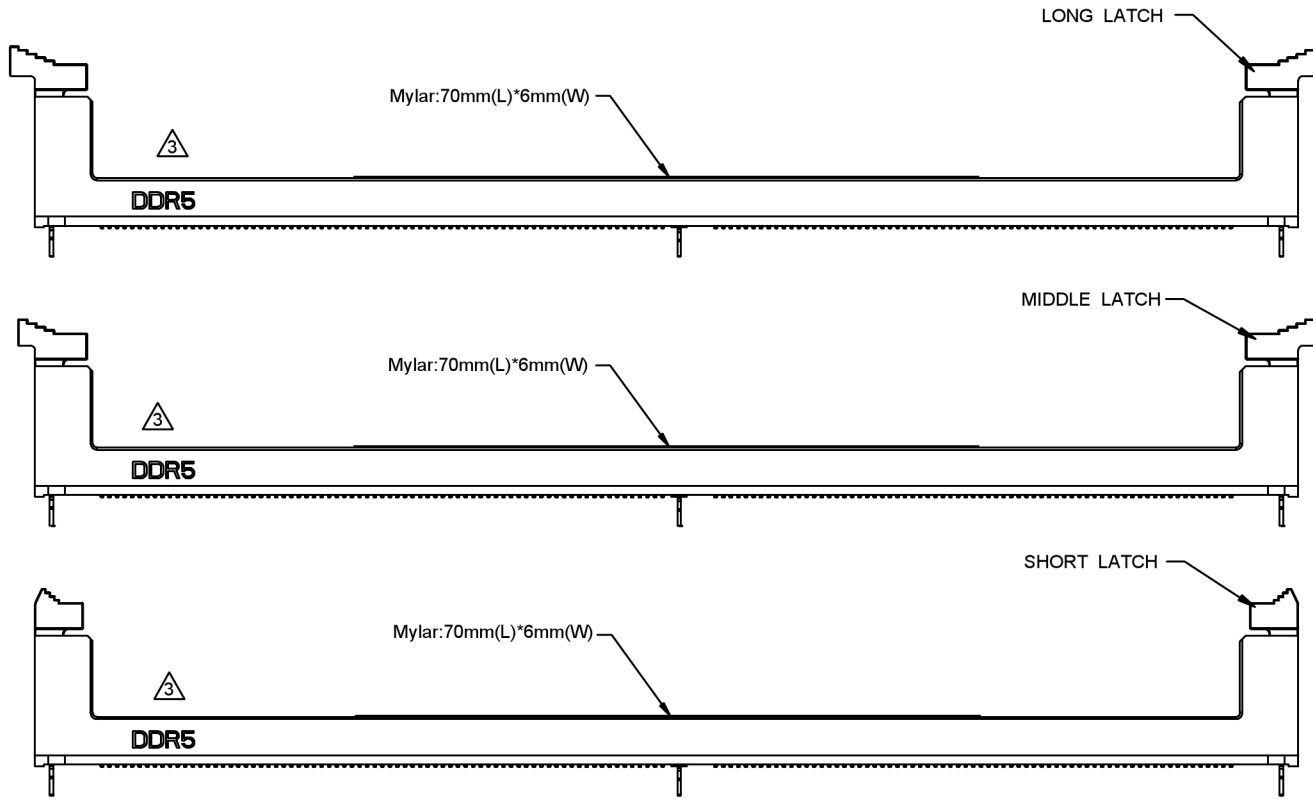
MARK	DESCRIPTION	DATE	REVISED	APPROVED	UNSPECIFIED TOLERANCES
	REVISIONS				
					ANGLAR ±5°
					L ≤ 4 ±0.2
					4 < L ≤ 16 ±0.3
					16 < L ≤ 63 ±0.4
					L > 63 ±0.5



DSND	SCALE: N/A
DWN	VIEW:
CHKD	UNIT: mm/in
APPD	SIZE: A4

MODEL TYPE:	
PART NO.:	X9414WVS-288T2-9TV15
DWG NO.:	X-X9414WVS-288T2-9TV15
WEIGHT	SHEET
	1/1
REVISION	A0

XKB INDUSTRIAL PRECISION CO., LIMITED



20.70	147.50	158.50	162.00	LONG
20.30	145.50	156.00	156.00	MIDDLE
20.20	142.00	151.50	152.00	SHORT
DIM.D	DIM.C	DIM.B	DIM.A	LATCH TYPE

X9414 W V S - 288 T 2 - 9T V15

① ② ③ ④ ⑤ ⑥ ⑦ ⑧ ⑨

- ① Series Number
- ② Terminal form: WAFER
- ③ Welding Board Angle : V-Stright Angle 180°
- ④ Welding Way:S-SMT
- ⑤ No.of Pins: 288PIN
- ⑥ BOARDLOCK TYPE: B.BOARD LOCKS TYPE
T.TAB type
- ⑦ LATCH TYPE: 1.short latch;2.long latch;3.middle latch
- ⑧ Plastic material: PA9T
- ⑨ Contact Plating:V15 15"u";V30 30"u"

NOTES 注释:

1. MATERIAL材料:

- 1.1 HOUSING外壳: HIGH PERFORMANCE RESINS, GLASS FILBER,UL94V-0;COLOR:BLACK.
- 1.2 LATCH锁: HIGH PERFORMANCE RESINS, GLASS FILBER, UL94 V-O;COLOR: BLACK.
- 1.3 CONTACTS触点: COPPER ALLOY.
- 1.4 BOARDLOCK针脚: STAINLESS STEEL.
- 1.5 TABS标签: STAINLESS STEEL.

2. FINISH饰面:

2.1 CONTACT触点:

- [SEE PART NO..] GOLD PLATING ON THE CONTACT AREA.
- 2.54um [100u"] MIN. MATTE-TIN PLATING ON THE SOLDERING AREA
- 1.27um [50u"] MIN. NICKEL UNDERPLATING OVERALL.

广东星坤科技股份有限公司

DATE 日期

文件工程章

MARK	DESCRIPTION	DATE	REVISED	APPROVED	UNSPECIFIED TOLERANCES
					ANGLAR ±5°
					L ≤ 4 ±0.2
					4 < L ≤ 16 ±0.3
					16 < L ≤ 63 ±0.4
					L > 63 ±0.5



DSND	SCALE: N/A	MODEL TYPE:
DWN	VIEW:	PART NO.: X9414WVS-288T2-9TV15
CHKD	UNIT: mm/in	DWG NO.: X-X9414WVS-288T2-9TV15
APPD	SIZE: A4	WEIGHT SHEET REVISION
XKB INDUSTRIAL PRECISION CO., LIMITED		1/1 A0

X-ON Electronics

Largest Supplier of Electrical and Electronic Components

Click to view similar products for [DIMM Connectors](#) category:

Click to view products by [XKB](#) manufacturer:

Other Similar products are found below :

[1-1932649-2](#) [296409204002856+](#) [5390471-1](#) [10079248-10202LF](#) [2309407-3](#) [10037402-11207LF](#) [10052286-13308LF](#) [10083950-10007](#)
[10124632-0101103LF](#) [10124632-0201001LF](#) [10124632-0202001LF](#) [56441-30007LF](#) [1-1473776-7](#) [20912-115110C](#) [XDAP-4042044-20401](#)
[20912-215110C](#) [ASAA826-E8SB0-7H](#) [X9413WVS-288T2-9TV15](#) [X9405WV-288I2-46V15](#) [X9405WV-288I2-46V30](#) [X9414WVS-288T2-](#)
[9TV30](#) [X9413WVS-288T2M-9TV15](#) [X9413WVS-288T2-9TV30](#) [X9414WVS-288T2-9TV15](#) [78035-0001](#) [78035-0301](#) [78315-0011](#) [78730-](#)
[1002](#) [78726-1002](#) [10078239-11103LF](#) [2013311-1](#) [4-1932000-8](#) [10079192-11102LF](#) [10116658-052FSLF](#) [10116658-152FSLF](#) [1-1735413-1](#)
[1-1735438-1](#) [2013310-1](#) [2013289-1](#) [390111-1](#) [390112-1](#) [878030102](#) [879180202](#) [78373-0011](#) [2308107-1](#) [2309411-1](#) [5-1746530-4](#) [2309408-](#)
[1](#) [2309412-1](#) [2309407-1](#)