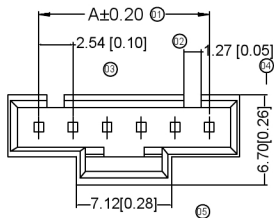
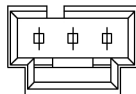


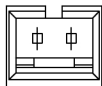
XKB



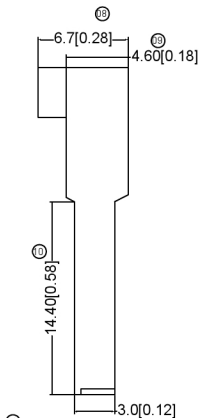
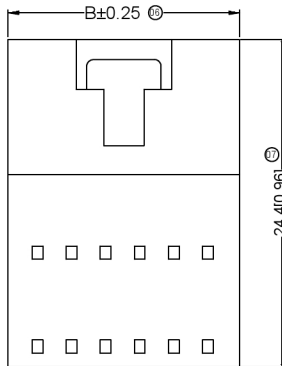
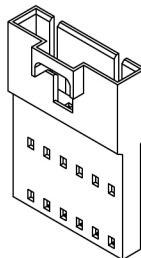
4P-25P



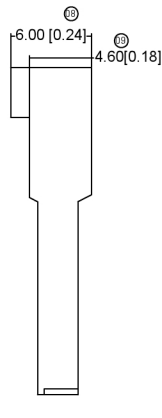
3P



2P



3P~25P



02P

Specificationsxkb

规格:

Voltage rating:250V AC/DC

额定电压: 250V AC/DC

Current rating:3A AC/DC

额定电流: 3A AC/DC XKB

Withstanding voltage:1500V AC/minute

耐受电压: 1500V AC/分钟

Temperature range:-25℃~+85℃

温度范围: -25℃~+85℃

Insulation resistance:≥1000MΩ

绝缘电阻: ≥1000MΩ

Contact resistance:≤20mΩ

接触电阻: ≤20mΩ XKB

After environmental testing:≤30mΩ

环境测试后: ≤30兆欧

X9556 H F-XX X-PT XX

① ② ③ ④ ⑤ ⑥ ⑦

① Series No.

② Category : H-HS G

③ Welding Board Angle : F-Fmale HGS

④ Row No.-Pin No.: XX-Single row

⑤ Special No.

⑥ Material : PT-PBT 94V-0

⑦ Color : Blank-Natural Color

Poles	Dimensions (mm)		Poles	Dimensions (mm)		Poles	Dimensions (mm)	
	A	B		A	B		A	B
02	2.54	7.12	10	22.86	27.44	18	43.18	47.76
03	5.08	9.66	11	25.40	29.98	19	45.72	50.30
04	7.62	12.20	12	27.94	32.52	20	48.26	52.84
05	10.16	14.74	13	30.48	35.06	21	50.08	55.38
06	12.70	17.28	14	33.02	37.60	22	53.34	57.92
07	15.24	19.82	15	35.56	40.14	23	55.88	60.46
08	17.78	22.36	16	38.10	42.68	24	58.42	63.00
09	20.32	24.90	17	40.64	45.22	25	60.96	65.54

X9556H-F-XX-PT	FBT UL 94V-0	X9556TM	X9556H
PART NO	Material	Suitable XKB Terminal	Suitable XKB Terminal

广东星坤科技股份有限公司

生 日期

文件工程章

REVISIONS
www.helxkb.com

XKB	ANGLAR	±5°
	L ≤ 4	±0.2
	4 < L ≤ 16	±0.3
	16 < L ≤ 63	±0.4
	L > 63	±0.5

UNSPECIFIED TOLERANCES

DSND	DATE	SCALE: NA	MODEL TYPE:
DWNN	DATE	VIEW:	X9556HF-XX-PT
CHKD	DATE	UNIT: mm/in	PART NO.: 2.54 mm Crimp Style Connectors
APPD	DATE	SIZE: A4	DWG NO.:
XKB INDUSTRIAL PRECISION CO.,LIMITED			WEIGHT 1.0g
			SHEET 1/1
			REVISION A0

X-ON Electronics

Largest Supplier of Electrical and Electronic Components

Click to view similar products for [Headers & Wire Housings](#) category:

Click to view products by [XKB](#) manufacturer:

Other Similar products are found below :

[57102-F02-18ULF](#) [58102-G61-06LF](#) [0009485154](#) [009176003701906](#) [0050291907](#) [02.125.8002.8](#) [609-3404](#) [61062-3](#) [622-0430](#) [622-3653LF](#)
[63453-116](#) [636-1030](#) [636-1427](#) [636-3427](#) [636-4007](#) [641938-9](#) [644827-2](#) [65495-038](#) [65692-001LF](#) [65781-018](#) [65781-047](#) [65817-010LF](#)
[65817-015LF](#) [66207-023LF](#) [67016-026LF](#) [67095-007LF](#) [68631-112](#) [68645-018](#) [68648-049](#) [699319-000](#) [70.362.1628.0](#) [70-4210](#) [70-4226B](#)
[70-4853B](#) [707-5020](#) [707-5028](#) [71.350.2428.0](#) [71961-016LF](#) [733-134](#) [754199-000](#) [760-3052](#) [787-8014-00](#) [FCN-367T-T012/H](#) [80.063.4001.1](#)
[800-90-001-10-001000](#) [800-90-010-10-002000](#) [801-43-002-10-013000](#) [801-43-006-10-002000](#) [803-41-018-10-001000](#) [803-43-014-20-](#)
[001000](#)