

For and on behalf of  
**KXB INDUSTRIAL PRECISION CO., LIMITED**  
 香港星坤工業精密有限公司

MARK	DESCRIPTION	DATE	REVISED	APPROVED	UNSPECIFIED TOLERANCES
△ X					L > 63 ± 0.5
△ X					16 < L ≤ 63 ± 0.4
△ X					4 < L ≤ 16 ± 0.3
					L ≤ 4 ± 0.2
					ANGULAR ± 5°

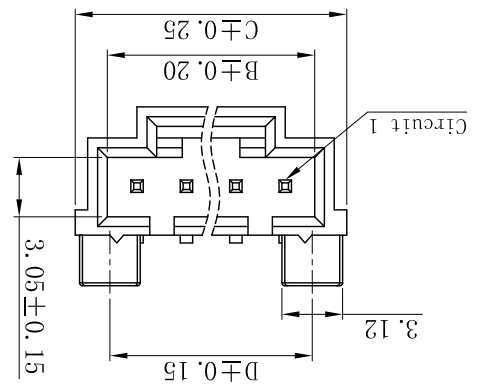
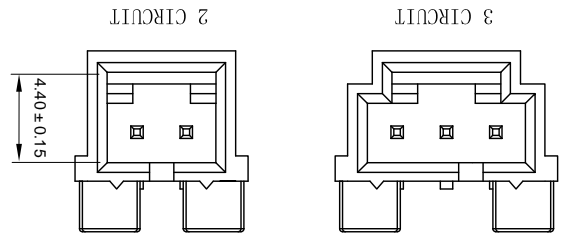
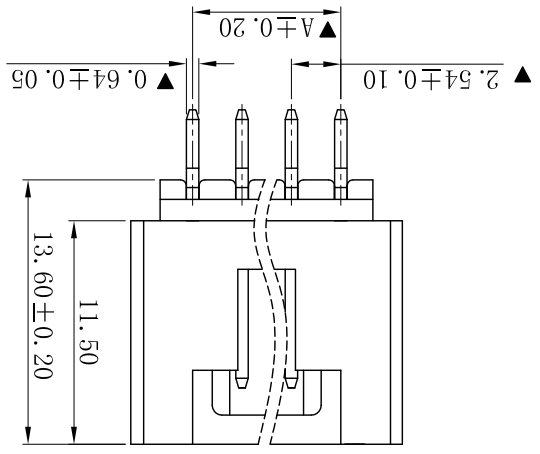
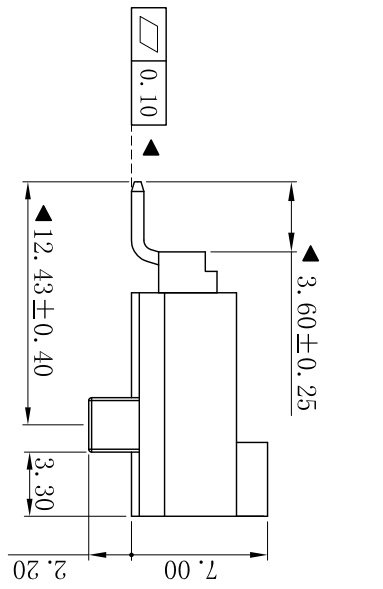
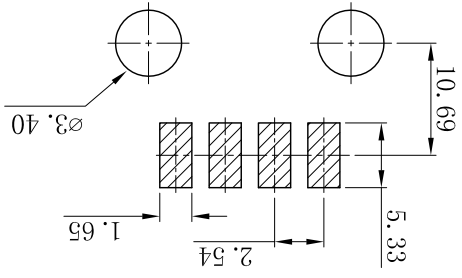
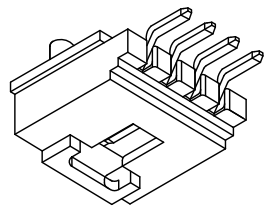
REVISIONS	DATE	DATE	DATE	DATE	DATE
REVISION					
SHEET	1/1				
WEIGHT	1.0g				

DSND	DATE	SCALE: N/A	MODEL TYPE: X9556WRS-XXX-XXXX
DWN	DATE	VIEW:	PART NO.: 2.54 mm Crimp Style Connectors
CHKD	DATE	UNIT: mm	DWG NO.:
Appd	DATE	SIZE: A4	

PART NO	Material	Material(Pin)	Finish(Pin)	Suitable XKB Terminal
X9556WRS-XXX-4TSW	Nylon 4T 94V-0	Brass	Gold-Flash	X9556H
X9556WRS-XXX-9T9V	LCP UL 94V-0			
X9556WRS-XXX-9TV01	LCP UL 94V-0			

Poles	Dimensions (mm)				Poles	Dimensions (mm)			
	A	B	C	D		A	B	C	D
02	2.54	5.60	8.87	5.33	08	17.78	20.84	24.11	20.57
03	5.08	8.14	11.41	7.87	09	20.32	23.38	26.65	23.11
04	7.62	10.68	13.95	10.41	10	22.86	25.92	29.19	25.65
05	10.16	13.22	16.49	12.95	11	25.40	28.46	31.73	28.19
06	12.70	15.76	19.03	15.49	12	27.94	31.00	34.27	30.73
07	15.24	18.30	21.57	18.03					

P.C.B LAYOUT



- Specifications :
- Voltage rating: 250V AC / DC
  - Current rating: 3A AC / DC
  - Withstanding voltage: 1500V AC/minute
  - Temperature range: -40°C~+105°C
  - Insulation resistance: ≥1000M $\Omega$ /E
  - Contact resistance: ≤20m $\Omega$ /E
  - After environmental testing: ≤30m $\Omega$ /E

X9556 W R S-XX-XX 9T XX XX

① Series No.  
 ② Category: W-water  
 ③ Welding Board Angle: R-90°  
 ④ Welding Way: S-SMT  
 ⑤ Row No.-Pin No.: XX-Single row  
 ⑥ Special NO. Blank: W=2.7 A: W=3.12  
 ⑦ Material: LP-LCP 94V-0 4T-Nylon 4T 94V-0  
 ⑧ Plating Category:  
 V\*\*: All Gold-Plated \*01-Gold Flash  
 SW-Matte Tin plating  
 ⑨ Color:  
 Blank-Natural Color Black

## X-ON Electronics

Largest Supplier of Electrical and Electronic Components

*Click to view similar products for [Headers & Wire Housings](#) category:*

*Click to view products by [XKB](#) manufacturer:*

Other Similar products are found below :

[95000-104TRLF](#) [10135584-644402LF](#) [DF62W-EP2022PCA](#) [95000-106TRLF](#) [DF62W-2022SCA](#) [DF62W-EP2022PC](#) [2203348](#) [DF62W-2022SC](#) [1084018](#) [1029039](#) [1084017](#) [802-10-012-10-002000](#) [1112640](#) [1112639](#) [891-007-9SS-BST1T](#) [000-34000](#) [0008550134](#) [0009482033](#) [0009507031](#) [57102-F02-18ULF](#) [57102-S06-03LF](#) [57202-S52-04LF](#) [PCN6-15S-2.5E](#) [0039019024](#) [58102-G61-06LF](#) [582553-1](#) [0009485154](#) [0009508121](#) [0022285053](#) [0050291907](#) [018731A](#) [LY20-4P-DT1-P1E-BR](#) [02.125.8002.8](#) [60101931](#) [60598-1 \(Cut Strip\)](#) [M1625-3R/100](#) [61062-3](#) [61082-181009](#) [CSU011177004](#) [636-1427](#) [638009-1](#) [641938-9](#) [641991-4](#) [644168-1](#) [644827-2](#) [647662-1](#) [65039-019ELF](#) [65692-001LF](#) [65781-018](#) [65781-047](#)