

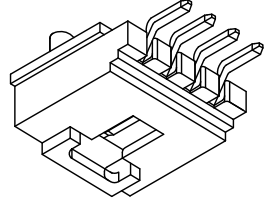
For and on behalf of
XKB INDUSTRIAL PRECISION CO., LIMITED
 香港星坤工業精密有限公司
 Authorized Signature(s)

MARK	DESCRIPTION	DATE	REVISED	APPROVED	UNSPECIFIED TOLERANCES	
					L > 63	± 0.5
△ X					16 < L ≤ 63	± 0.4
△ X					4 < L ≤ 16	± 0.3
△ X					L ≤ 4	± 0.2
					ANGULAR	± 5°

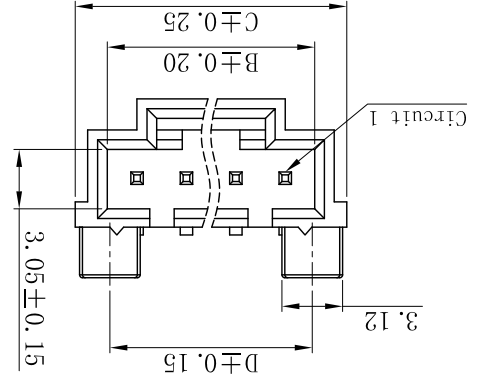
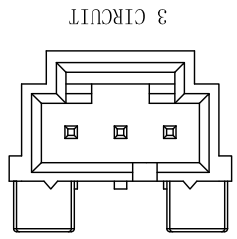
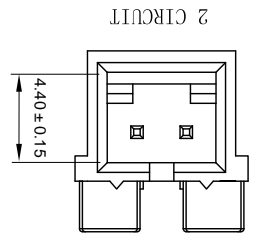
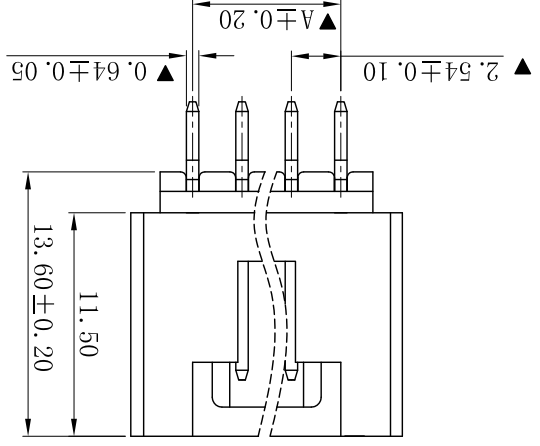
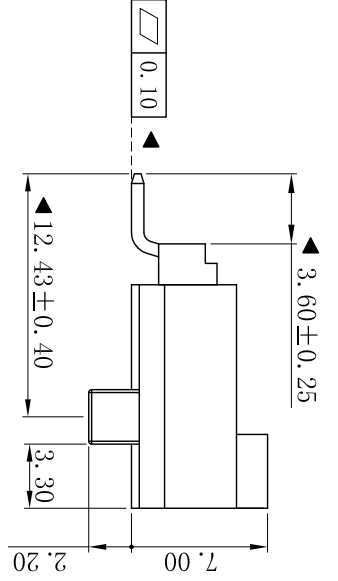
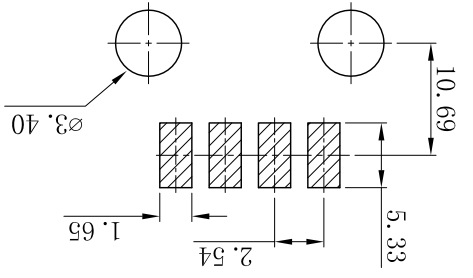
DSND	DATE	SCALE: N/A	MODEL TYPE:
			X9556WRS-XXX-4T5W
DWN <th>DATE</th> <th>VIEW:</th> <th>PART NO.:</th>	DATE	VIEW:	PART NO.:
			X9556WRS-XXX-XXXX
CHKD <th>DATE</th> <th>UNIT: mm</th> <th>DWG NO.:</th>	DATE	UNIT: mm	DWG NO.:
			2.54 mm Crimp Style Connectors
APPD <th>DATE</th> <th>SIZE: A4</th> <th>REVISION</th>	DATE	SIZE: A4	REVISION
			A0

PART NO	Material	Material(Pin)	Finish(Pin)	Suitable XKB Terminal
X9556WRS-XXX-9TV01	LCP UL 94V-0	Brass	Gold-Flash	X9556H
X9556WRS-XXA-9TV01	LCP UL 94V-0			
X9556WRS-XXX-9T5W	Nylon 4T 94V-0		Mate tin	

Poles		Dimensions (mm)										
A	B	C	D	Poles			A	B	C	D	Dimensions (mm)	
02	2.54	5.60	8.87	5.33	08	17.78	20.84	24.11	20.57	D	D	
03	5.08	8.14	11.41	7.87	09	20.32	23.38	26.65	23.11	C	C	
04	7.62	10.68	13.95	10.41	10	22.86	25.92	29.19	25.65	B	B	
05	10.16	13.22	16.49	12.95	11	25.40	28.46	31.73	28.19	A	A	
06	12.70	15.76	19.03	15.49	12	27.94	31.00	34.27	30.73			
07	15.24	18.30	21.57	18.03								



P.C.B LAYOUT



- Specifications :**
- Voltage rating: 250V AC / DC
 - Current rating: 3A AC / DC
 - Withstanding voltage: 1500V AC/minute
 - Temperature range: -40°C~+105°C
 - Insulation resistance: ≥1000M Ω /E
 - Contact resistance: ≤20m Ω /E
 - After environmental testing: ≤30m Ω /E

X9556 W R S-XX-XX 9T XX XX
 ① Series No.
 ② Category: W-water
 ③ Welding Board Angle: R-90°
 ④ Welding Way: S-SMT
 ⑤ Row No.-Pin No.: XX-Single row
 ⑥ Special NO. Blank: W=2.7 A: W=3.12
 ⑦ Material: LP-LCP 94V-0 4T-Nylon 4T 94V-0
 ⑧ Plating Category:
 V**All Gold-Plated *01-Gold Flash
 SW-Matte Tin plating
 ⑨ Color:
 Blank-Natural Color Black

X-ON Electronics

Largest Supplier of Electrical and Electronic Components

Click to view similar products for [Headers & Wire Housings](#) category:

Click to view products by [XKB](#) manufacturer:

Other Similar products are found below :

[95000-104TRLF](#) [10135584-644402LF](#) [DF62W-EP2022PCA](#) [95000-106TRLF](#) [DF62W-2022SCA](#) [DF62W-EP2022PC](#) [2203348](#) [DF62W-2022SC](#) [1084018](#) [1029039](#) [1084017](#) [802-10-012-10-002000](#) [1112640](#) [1112639](#) [891-007-9SS-BST1T](#) [000-34000](#) [0008550134](#) [0009482033](#) [0009507031](#) [57102-F02-18ULF](#) [57102-S06-03LF](#) [57202-S52-04LF](#) [PCN6-15S-2.5E](#) [0039019024](#) [58102-G61-06LF](#) [582553-1](#) [0009485154](#) [0009508121](#) [0022285053](#) [0050291907](#) [018731A](#) [LY20-4P-DT1-P1E-BR](#) [02.125.8002.8](#) [60101931](#) [60598-1 \(Cut Strip\)](#) [M1625-3R/100](#) [61062-3](#) [61082-181009](#) [CSU011177004](#) [636-1427](#) [638009-1](#) [641938-9](#) [641991-4](#) [644168-1](#) [644827-2](#) [647662-1](#) [65039-019ELF](#) [65692-001LF](#) [65781-018](#) [65781-047](#)