

Specifications:

规格:

Voltage rating:600V AC/DC

额定电压: 600V AC/DC

Current rating:19A AC/DC

额定电流: 19A AC/DC

Withstanding voltage:5000V AC/minute

耐受电压: 5000V AC/分钟

Temperature range:-40°C-+105°C

温度范围: -40°C-+105°C

Insulation resistance:1000MΩ min

绝缘电阻: 1000MΩ Min

Contact resistance:3.5mΩ Max

接触电阻: 3.5mΩ Max

X9635 T M - B SN

① ② ③ ④ ⑤

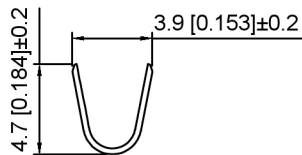
1.Series No

2.Category:T-Terminal

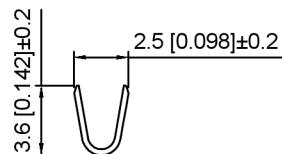
3.Category:M-Male Terminal

4.Material:Brass

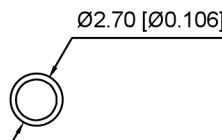
5.Plating:SN-Tin Plated



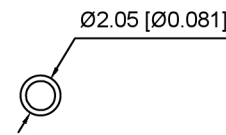
SEC:A-A



SEC:B-B



SEC:C-C



SEC:D-D

X9635TM-BSN	Brass	AWG#16-20	3.3mm(Max)	Tin Over Nickel	X9635HF
PART NO	Material	Wire Range	Insulation O.D	Finish	Suitable XKB Housing

DSND	SCALE: N/A	MODEL TYPE: 6.35mm Crimp Style Connector
DWN	VIEW:	PART NO.: X9635TM-BSN
CHKD	UNIT: mm/in	DWG NO.: X-X9635TM-BSN
APPD	SIZE: A4	

广东星坤科技股份有限公司

日期

文件工程章

MARK	DESCRIPTION	DATE	REVISED	APPROVED	UNSPECIFIED TOLERANCES

REVISIONS
www.helloxkb.com www.helloxkb.cn www.xk-dg.cn



XKB INDUSTRIAL PRECISION CO., LIMITED

WEIGHT	SHEET	REVISION
	1/1	A0

X-ON Electronics

Largest Supplier of Electrical and Electronic Components

Click to view similar products for [Headers & Wire Housings](#) category:

Click to view products by [XKB](#) manufacturer:

Other Similar products are found below :

[0015917161](#) [0022155065](#) [57102-F02-18ULF](#) [58102-G61-06LF](#) [582553-1](#) [01.001.5753.1](#) [0050291907](#) [02.125.8002.8](#) [609-3404](#) [61062-3](#)
[CSU011177004](#) [622-0430](#) [622-3653LF](#) [63453-116](#) [636-1030](#) [636-1427](#) [636-3427](#) [636-4007](#) [641938-9](#) [65495-038](#) [65692-001LF](#) [65781-018](#)
[65781-047](#) [65817-010LF](#) [65817-015LF](#) [67095-007LF](#) [67601157](#) [68631-112](#) [68645-018](#) [699319-000](#) [70.362.1628.0](#) [70-4210](#) [70-4226B](#) [70-](#)
[4853B](#) [71.350.2428.0](#) [733-134](#) [733-162](#) [760-3052](#) [MHR-64-VUAL](#) [80.063.4001.1](#) [800-90-001-10-001000](#) [801-43-002-10-013000](#)
[801-43-006-10-002000](#) [803-43-024-10-001000](#) [803-93-012-10-001000](#) [8-1437020-4](#) [819-22-004-30-001101](#) [820-22-006-30-001101](#)
[820-22-008-30-001101](#) [821-22-002-10-001101](#)