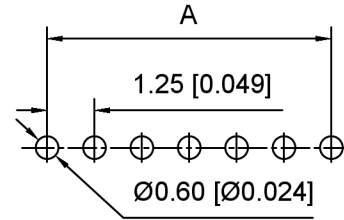
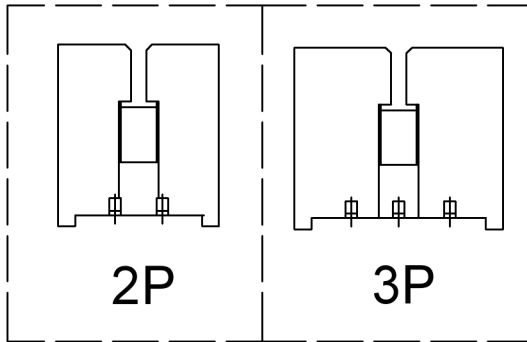


Specifications:

规格:  
 Voltage rating: 125V AC/DC  
 额定电压: 125V AC/DC  
 Current rating: 1A AC/DC  
 额定电流: 1A AC/DC  
 Withstanding voltage: 500V AC/minute  
 耐受电压: 500V AC/分钟  
 Temperature range: -25°C~+105°C  
 温度范围: -25°C~+105°C  
 Insulation resistance: ≥100MΩ  
 绝缘电阻: ≥100MΩ  
 Contact resistance: ≤20mΩ  
 接触电阻: ≤20mΩ

X9821 W R - XX R - LP SN  
 ① ② ③ ④ ⑤ ⑥ ⑦

1. Series No
2. Category: W-Wafer
3. Welding Board Angle: R-Straight 90°
4. Row No. Pin No: XX-02~16Pin
5. Special No: R-DIP 2.25mm
6. Material: LP-LCP UL94V-0 ,Natural
7. Plating: SN- Tin Plated



Recommended PCB Layout(Top view)  
 Tolerance: ±0.05mm

Poles	Dimensions (mm)			Poles	Dimensions (mm)		
	A	B	C		A	B	C
02	1.25	3.20	4.25	10	11.25	13.20	14.25
03	2.50	4.45	5.50	11	12.50	14.45	15.50
04	3.75	5.70	6.75	12	13.75	15.70	16.75
05	5.00	6.95	8.00	13	15.00	16.95	18.00
06	6.25	8.20	9.25	14	16.25	18.20	19.25
07	7.50	9.45	10.50	15	17.50	19.45	20.50
08	8.75	10.70	11.75	16	18.75	20.70	21.75
09	10.00	11.95	13.00				

X9821WR-XXR-LPSN	LCP	Brass	X9821HM
PART NO	Material	Material(Pin)	Suitable XKB Housing

DSND		SCALE: N/A	MODEL TYPE: 1.25mm Crimp Style Connector
DWN		VIEW:	PART NO.: X9821WR-XXR-LPSN
CHKD		UNIT: mm/in	DWG NO.: X-X9821WR-XXR-LPSN
APPD		SIZE: A4	



XKB INDUSTRIAL PRECISION CO., LIMITED

WEIGHT	SHEET	REVISION
	1/1	A0

广东星坤科技股份有限公司

建	日期
4	
發	

文件工程章

MARK	DESCRIPTION	DATE	REVISED	APPROVED	ANGLAR	±5°
					L ≤ 4	±0.2
					4 < L ≤ 16	±0.3
					16 < L ≤ 63	±0.4
					L > 63	±0.5
					UNSPECIFIED TOLERANCES	

## X-ON Electronics

Largest Supplier of Electrical and Electronic Components

*Click to view similar products for [Headers & Wire Housings](#) category:*

*Click to view products by [XKB](#) manufacturer:*

Other Similar products are found below :

[57102-F02-18ULF](#) [58102-G61-06LF](#) [582553-1](#) [009176003701906](#) [01.001.5753.1](#) [0050291907](#) [02.125.8002.8](#) [609-3404](#) [61062-3](#)  
[CSU011177004](#) [622-0430](#) [622-3653LF](#) [63453-116](#) [636-1030](#) [636-1427](#) [636-3427](#) [636-4007](#) [641938-9](#) [644827-2](#) [65495-038](#) [65692-001LF](#)  
[65781-018](#) [65781-047](#) [65817-010LF](#) [65817-015LF](#) [66207-023LF](#) [67095-007LF](#) [67601157](#) [68631-112](#) [68645-018](#) [699319-000](#)  
[M90C108951C](#) [70.362.1628.0](#) [70-4210](#) [70-4226B](#) [70-4853B](#) [707-5028](#) [71.350.2428.0](#) [71961-016LF](#) [733-134](#) [733-162](#) [754199-000](#) [760-](#)  
[3052](#) [80.063.4001.1](#) [800-90-001-10-001000](#) [800-90-010-10-002000](#) [801-43-002-10-013000](#) [801-43-006-10-002000](#) [803-41-018-10-001000](#)  
[803-43-024-10-001000](#)