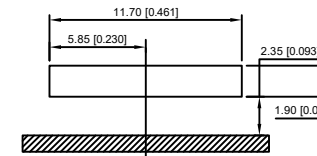
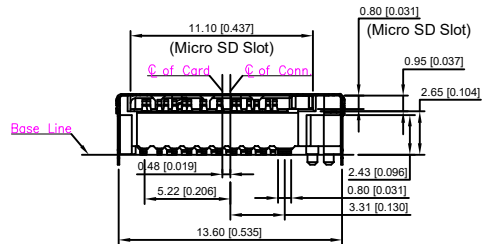


Card Detect Switch	
Card Uninsertion	Open
Card Half Insertion	Open
Card Insertion	Close
Open	Close



Pin No.	Pin Assignment
P1	Micro SD DAT2
P2	Micro SD CD/DAT3
P3	Micro SD CMD
P4	Micro SD VDD1
P5	Micro SD CLK
P6	Micro SD VSS
P7	Micro SD DAT0/CLK+
P8	Micro SD DAT1/CLK-
P9	Micro SD CD
P10	GND
P11	GND
P12	GND
P13	GND
P14	GND
P15	Micro SD VDD2
P16	Micro SD SWIO
P17	Micro SD VSS
P18	Micro SD D0+
P19	Micro SD D0-
P20	Micro SD VSS
P21	Micro SD D1-
P22	Micro SD D1+
P23	Micro SD VSS



Note:

- 材料 Material
  - 塑料 Plastic: LCP, S470, Black, UL94V-0
  - 触点 Contact: C5210-H
  - 外壳 Shell: SUS304-H
- 电镀 Plating:
  - 触点 Contact:
    - 接触电阻 Contact Area: Au 1u"min. Plating Over Ni 50u" min.
    - 焊尾 Solder tail: Gold Flash Plating Over Ni 50u" min.
  - 外壳 Shell:
    - Solderability Ni 50u"min. Over All
- Contact And Tail Coplanarity To Be 0.10mm max.

						DSND	DATE	SCALE: N/A	MODEL TYPE:		
						DWN	DATE	VIEW:	TF CARD CONN		
						CHKD	DATE	UNIT: mm/in	PART NO.:		
						APPD	DATE	SIZE: A4	DWG NO.:		
									XCFT-1150-11		
									WEIGHT	SHEET	REVISIO
									1.0g	1/1	A0

## X-ON Electronics

Largest Supplier of Electrical and Electronic Components

*Click to view similar products for [Memory Card Connectors](#) category:*

*Click to view products by [XKB](#) manufacturer:*

Other Similar products are found below :

[M21-033321-005](#) [6407-249V-25273P](#) [6407-249V-25343P](#) [69.920.0553.0](#) [809180410000000](#) [DM3AT-SF-PEJM5\(41\)](#) [HMCAP001](#) [252-0144-000](#) [2041353-2](#) [308-DS1P0811-192](#) [33CFAE-DN](#) [HM2P09PDR360N9LF](#) [502431-1011](#) [10-629549-258N](#) [11327-001](#) [11327-002](#) [617230001](#) [95622-003LF](#) [N7E50-U516RB-50-SIN0005](#) [95079-00CALF](#) [84648-056HLF](#) [93-570123-08P](#) [125A-78C00](#) [MI20A-50PD-SF-EJL\(71\)](#) [KP10S-SF-PEJ\(812\)](#) [504536-0691](#) [CCM03-3109 B LFT](#) [MI21-50PD-SF\(91\)](#) [2309923-1](#) [61126-050CAHLF](#) [IC1GA-68PD-1.27DS-EJ\(72\)](#) [GTFF08432B1HR](#) [G85DT17001P1EU](#) [G85C11101152HHR](#) [G85D1160022HHR](#) [KP15TL-SF\(800\)](#) [KP10BH-8S-SF\(800\)](#) [SCE2MSDB76A121SN](#) [SCE2MSDZN76A121SN](#) [C00710B0250001](#) [CCM01-2664 LFT T25](#) [47309-2651](#) [47481-0001](#) [055036006202862+](#) [67799-0004](#) [91228-3006](#) [104168-1616](#) [104C-TAA1](#) [112I-TA01](#) [112K-TAA0-RA1](#)