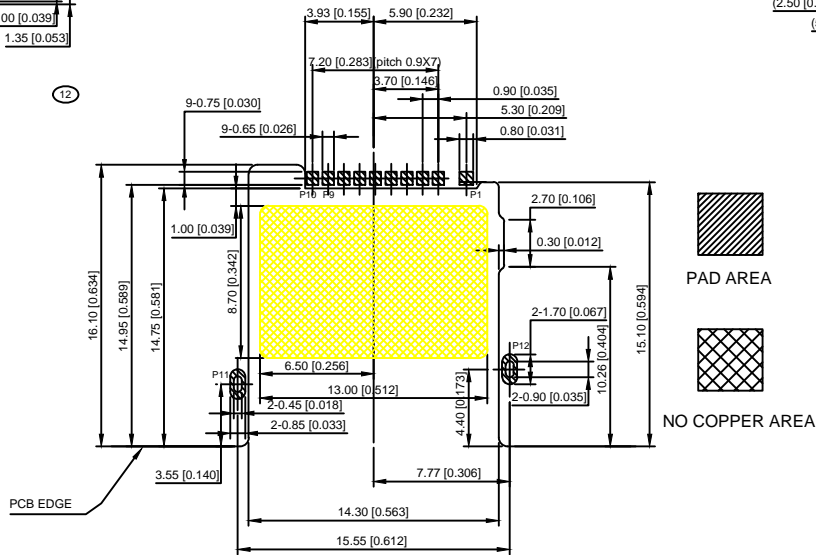
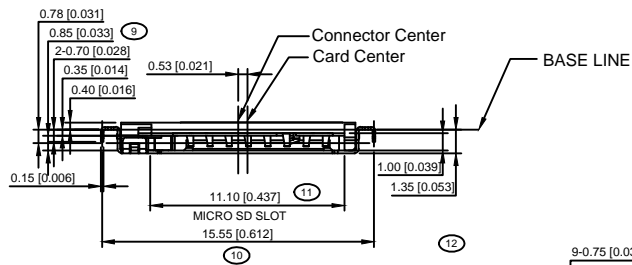


规格 Specification

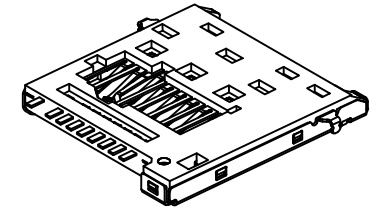
- \*电气特性 Electrical Characteristics:
  - 触点额定电流 Contact Current Rating:0.5Amperes.
  - 耐电压 Dielectric Withstanding Voltage:AC500V r.m.s.
  - 绝缘电阻 Insulation Resistance:1000 Megohms Minimum At DC 500V.
  - 接触电阻 Contact Resistance:100 mΩ Maximum.
- \*机械特性 Mechanical Characteristics:
  - 寿命 Mating Cycles:10,000 Cycles.
- \*环境 Environmental:
  - 工作温度 Operating Temperature:-25°C~+85°C.
- \*材料 Materials:
  - 绝缘子 Insulator:HI-Temp plastic UL 94V-0 Rated.
  - 触点 Contact:Copper Alloy.
  - 外壳 Shell:Stainless Steel(t=0.15mm).

SECTION A-A



PCB PATTERN LAYOUT  
(GENERAL TOLERANCE:±0.05)

Pin	Define
P1	SWITCH TERM CD
P2	DAT1
P3	DATO
P4	VSS
P5	CLK
P6	VDD
P7	CMD
P8	CD/DAT3
P9	DAT2
P10	GND
P11	GND
P12	GND



XKB Connectivity

REVISIONS					DATE	REVISED	APPROVED	UNSPECIFIED TOLERANCES	DSND	DATE	SCALE: N/A	MODEL TYPE: TF CARD CONN		
ΔX								ANGLAR		DATE	VIEW:	PART NO.:		
ΔX								L ≤ 4		DATE	UNIT: mm/in	DWG NO.:		
ΔX								4 < L ≤ 16		DATE	SIZE: A4	XKTF-1230-51		
MARK	DESCRIPTION							16 < L ≤ 63		DATE		WEIGHT	SHEET	REVISION
								L > 63				1.0g	1/1	A0

## X-ON Electronics

Largest Supplier of Electrical and Electronic Components

*Click to view similar products for [Memory Card Connectors](#) category:*

*Click to view products by [XKB](#) manufacturer:*

Other Similar products are found below :

[M21-033321-005](#) [6407-249V-25273P](#) [6407-249V-25343P](#) [69.920.0553.0](#) [809180410000000](#) [DM3AT-SF-PEJM5\(41\)](#) [HMCAP001](#) [252-0144-000](#) [2041353-2](#) [308-DS1P0811-192](#) [33CFAE-DN](#) [HM2P09PDR360N9LF](#) [502431-1011](#) [10-629549-258N](#) [11327-001](#) [11327-002](#) [617230001](#) [95622-003LF](#) [N7E50-U516RB-50-SIN0005](#) [95079-00CALF](#) [84648-056HLF](#) [93-570123-08P](#) [125A-78C00](#) [MI20A-50PD-SF-EJL\(71\)](#) [KP10S-SF-PEJ\(812\)](#) [504536-0691](#) [CCM03-3109 B LFT](#) [MI21-50PD-SF\(91\)](#) [2309923-1](#) [61126-050CAHLF](#) [IC1GA-68PD-1.27DS-EJ\(72\)](#) [GTFFP08432B1HR](#) [G85DT17001P1EU](#) [G85C11101152HHR](#) [G85D1160022HHR](#) [KP15TL-SF\(800\)](#) [KP10BH-8S-SF\(800\)](#) [SCE2MSDB76A121SN](#) [SCE2MSDZN76A121SN](#) [C00710B0250001](#) [CCM01-2664 LFT T25](#) [47309-2651](#) [47481-0001](#) [055036006202862+](#) [67799-0004](#) [91228-3006](#) [104168-1616](#) [104C-TAA1](#) [112I-TA01](#) [112K-TAA0-RA1](#)