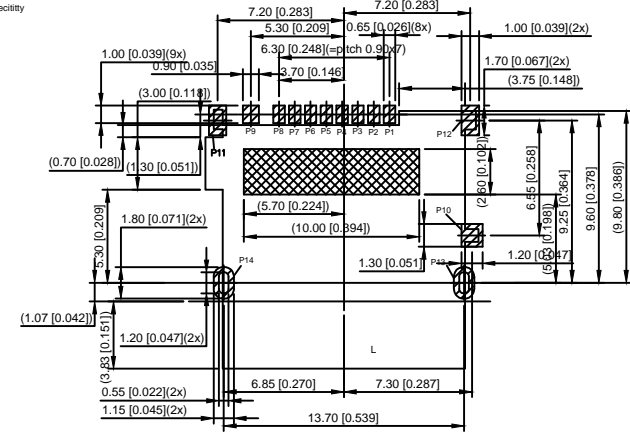
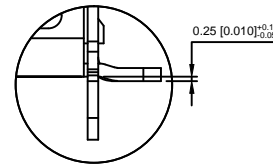
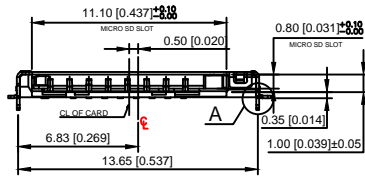


XKB Connectivity



RECOMMENDED PCB LAYOUT(TOP VIEW)
GENERAL TOLERANCE:±0.05
XKB Connectivity

- PAD AREA
- NO COPPER AREA
- KEEP OUT AREA



DETAIL A
SCALE 5:1

XKB Connectivity

1. 材料 MATERIAL:

- 1.1 塑料 PLASTIC: LCP , UL 94V-0, COLOR: BLACK
- 1.2 触点 CONTACT: COPPER ALLOY (C5210)
- 1.3 外壳 SHELL: STAINLESS STEEL (SUS304)

2. FINISH:

- 2.1 端子 TERMINAL: 50u" MIN. NICKEL PLATED OVERALL
- 2.2 触点 CONTACT: Au 1u"
- 2.3 尾部 TAIL: 100u" MATT-TIN PLATED
- 2.4 外壳 SHELL: 50u" MIN. NICKEL PLATED OVERALL

3. PRODUCT MUST CONFORM TO RoHS AND HALOGEN FREE REQUIREMENT

XKB Connectivity

PIN NUMBER	PIN DEFINE
PIN 1	MICRO_SD_DAT2
PIN 2	MICRO_SD_CD/DAT3
PIN 3	MICRO_SD_CMD
PIN 4	MICRO_SD_VDD
PIN 5	MICRO_SD_CLK
PIN 6	MICRO_SD_VSS
PIN 7	MICRO_SD_DAT0
PIN 8	MICRO_SD_DAT1
PIN 9	MICRO_SD_CD
PIN 10	GND
PIN 11,12,13,14	GND

CARD DETECT SWITCH OPEN/CLOSE FOR MICRO SD CARD POSITION

UN-INSERTION	CARD DETECT SWITCH
CARD UNINSERTION	OPEN
CARD HALF INSERTION	OPEN
CARD INSERTION	CLOSE

N/O OPEN CLOSE

REVISIONS					DSND	DATE	SCALE: N/A	MODEL TYPE: TF CARD CONN
ΔX				ANGLAR		DATE	VIEW:	PART NO.:
ΔX				L ≤ 4	±5°			
ΔX				4 < L ≤ 16	±0.2			
MARK	DESCRIPTION	DATE	REVISED	APPROVED	16 < L ≤ 63		UNIT: mm/in	DWG NO.:
					L > 63		SIZE: A4	XKTF-1250-21
					UNSPECIFIED TOLERANCES			WEIGHT
	www.xk-dg.cn							1.0g
	www.helloxkb.com							SHEET
	www.helloxkb.cn							1/1
								REVISION
								A0

X-ON Electronics

Largest Supplier of Electrical and Electronic Components

Click to view similar products for [Memory Card Connectors](#) category:

Click to view products by [XKB](#) manufacturer:

Other Similar products are found below :

[M21-033321-005](#) [6407-249V-25273P](#) [6407-249V-25343P](#) [69.920.0553.0](#) [809180410000000](#) [DM3AT-SF-PEJM5\(41\)](#) [HMCAP001](#) [252-0144-000](#) [2041353-2](#) [308-DS1P0811-192](#) [33CFAE-DN](#) [HM2P09PDR360N9LF](#) [502431-1011](#) [10-629549-258N](#) [11327-001](#) [11327-002](#) [617230001](#) [95622-003LF](#) [N7E50-U516RB-50-SIN0005](#) [95079-00CALF](#) [84648-056HLF](#) [93-570123-08P](#) [125A-78C00](#) [MI20A-50PD-SF-EJL\(71\)](#) [KP10S-SF-PEJ\(812\)](#) [504536-0691](#) [CCM03-3109 B LFT](#) [MI21-50PD-SF\(91\)](#) [2309923-1](#) [61126-050CAHLF](#) [IC1GA-68PD-1.27DS-EJ\(72\)](#) [GTFFP08432B1HR](#) [G85DT17001P1EU](#) [G85C11101152HHR](#) [G85D1160022HHR](#) [KP15TL-SF\(800\)](#) [KP10BH-8S-SF\(800\)](#) [SCE2MSDB76A121SN](#) [SCE2MSDZN76A121SN](#) [C00710B0250001](#) [CCM01-2664 LFT T25](#) [119A-40A00-R02](#) [47309-2651](#) [47481-0001](#) [055036006202862+](#) [67799-0004](#) [91228-3006](#) [104168-1616](#) [104C-TAA1](#) [112I-TA01](#)