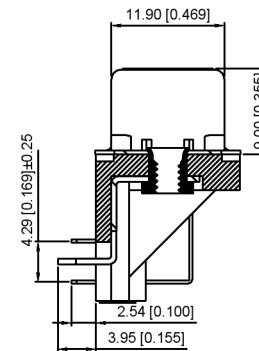
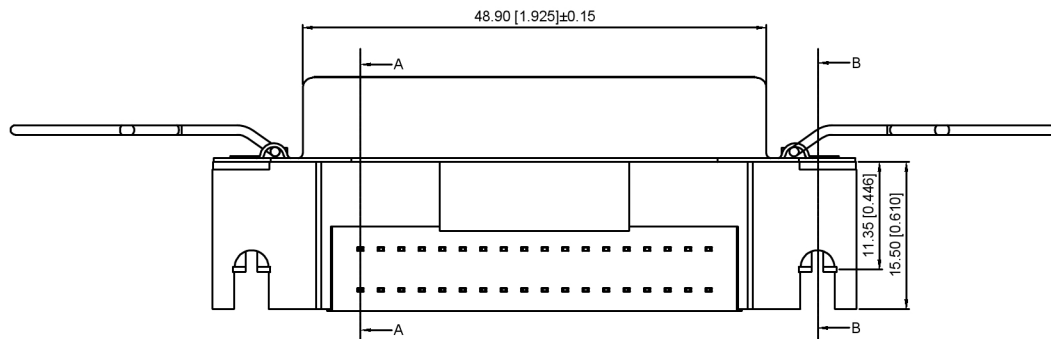
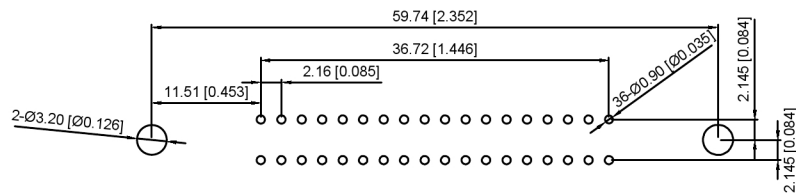


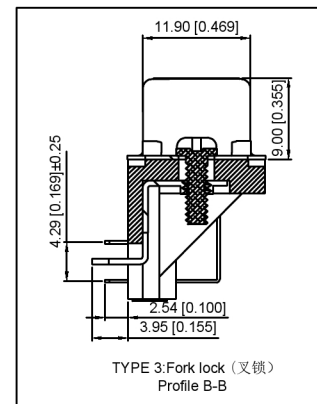
剖面 A-A



TYPE 1: riveting(铆合)
Profile B-B



PCB LAYOUT



TYPE 3:Fork lock (叉锁)
Profile B-B

Specifications:

规格:

Current rating:1A AC/DC

额定电流: 1A AC/DC

Voltage rating:250V AC

额定电压: 250V AC

Withstanding voltage:1000V AC/MIN

耐受电压: 1000V AC/分钟

Temperature range:-55°C-+105°C

温度范围: -55°C-+105°C

Insulation resistance:1000MΩMIN

绝缘电阻: ≥1000MΩ

Contact resistance:25mΩMAN

接触电阻:≤25mΩ

Material And FINISHED:

材料和成本:

INSULATOR:PBT+G/F UL 94V-0

绝缘体: PBT+G/F UL 94V-0

SHELL: STEEL

外壳: 钢

CONTACT MATERIAL:BRASS

触点材料: 黄铜

hook:SUS 304

卡勾: 不锈钢

XSC XX F T X X X G
○ ○ ○ ○ ○ ○ ○ ○

- Series NO.
- Row No.Pin No:XX-36
- Welding Board Angle :F-Female
- T: Traditional
- Planting Category: 1:Gold 1u ;2:Gold 2u; 3:Gold 3u ;4:Gold 5u; 5:Gold 15u; 6:Gold 30u ;7:Terminal half- Gold Bright Tin;8:Terminal half- Gold 2u Bright Tin 9: Terminal half- Gold 3u Bright Tin;10: Terminal half- Gold 5u Bright Tin 11: Terminal half- Gold 15u Bright Tin;12: Terminal half- Gold 30u Bright Tin 13: Terminal half- Gold Matte Tin;14:Terminal half- Gold 2u Matte Tin 15: Terminal half- Gold 3u Matte Tin; 16:Terminal half- Gold 5u Matte Tin 17:Terminal half- Gold 15u Matte Tin;18:Terminal half- Gold 30u Matte Tin
- B:Black W:White BL:Blue
- 1:TYPE-1; 3:TYPE-3
- Special type: blank-No hook; G-Hooked hook

DSND		SCALE: N/A	MODEL TYPE: SCS1
DWN		VIEW:	PART NO.: XSCXXFXXXXG
CHKD		UNIT: mm/in	DWG NO.: X-XSCXXFXXXXG
APPD		SIZE: A4	WEIGHT SHEET REVISION
			1/1 A0



XKB INDUSTRIAL PRECISION CO., LIMITED

ANGULAR	±5°
L ≤ 4	±0.2
4 < L ≤ 16	±0.3
16 < L ≤ 63	±0.4
L > 63	±0.5

UNSPECIFIED TOLERANCES

MARK	DESCRIPTION	DATE	REVISED	APPROVED
ΔX				
ΔX				
ΔX				
REVISIONS				
www.helloxkb.com www.helloxkb.cn www.xk-dg.cn				

X-ON Electronics

Largest Supplier of Electrical and Electronic Components

Click to view similar products for [D-Sub Standard Connectors](#) category:

Click to view products by [XKB](#) manufacturer:

Other Similar products are found below :

[015-0339-000](#) [015-0341-000](#) [015-0349-000](#) [015-0350-000](#) [015-8544-011](#) [015-8755-001](#) [017041-0005](#) [020419-0104](#) [609-25P](#) [609-9P](#)
[M24308/2-23Z](#) [CT0-24-10SC](#) [CT0-36-3PC](#) [CT0E20-8PS](#) [CT0F16S-1PS](#) [CT0TA16-11SXCA232](#) [CT1E20-19SS](#) [CT2-10SL-3SC](#) [CT2-14S-2PCA34](#) [CT2-18-11PCAU](#) [CT2-22-19SC](#) [CT2-36-5PC](#) [CT6-10SL-3SC](#) [CT6-10SL-4SC](#) [CT6-14S-2SC](#) [CT6-16-12SC](#) [CT6-18-10PSA206](#)
[CT6-18-10PSA232](#) [CT6-18-11PXSA206](#) [CT6-18-11PXSA232](#) [CT6-22-10PS](#) [CT6-24-5PC](#) [CT6-9767-18-8-18-4SS](#) [CT6E14S-5SC](#)
[CT6E14SA7SC](#) [CT6E20-14SS](#) [CT6E22-14PC](#) [CT6E22-14PS](#) [CT6E22-19PS](#) [CT6E22-22PS](#) [CT6E24-10SC](#) [CT6F16S-1SC](#) [CT6FA10SL-4PS](#)
[CT6LA20-19PC](#) [CT6M20-19SS](#) [CT6NSB4-20-8SS](#) [CT6TC14S-6SCAU](#) [CT6TC14S-7PS](#) [6STD15SCT99S40X](#) [6STF09PCM05B70X](#)