

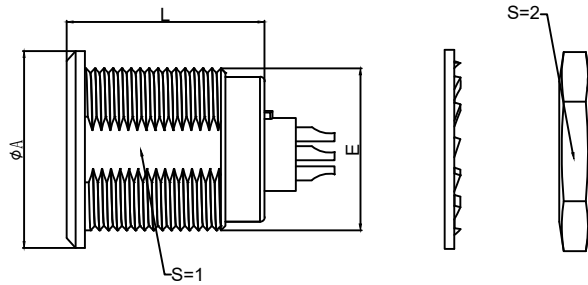
# 1.View and size(视图及尺寸)

| Main technical indicators(主要技术指标) |  |
|-----------------------------------|--|
| 1.Mating (插拔次数)                   | 5000   |
| 2.Working Temperature (温度)        | -55~+150 °C  |
| 3.IP Rating (防护级别)                | IP 50  |
| 4.Diameter of socket end(插合端直径)   | φ0.5   |
| 5.Testing Voltage (测试电压)          | 1000V  |
| 6.Working Voltage (工作电压)          | 700V   |
| 7.Rated Current (额定电流)            | 1.7A   |
| 8.Shell material(壳体材质)            | Brass (chromium plating)/(nickel plating) fixation ring/<br>黄铜 (镀铬)/(镀镍) 固定圈 |
| 9.Pin Material(插针材料)              | Copper alloy gold plating(铜合金镀金)   |
| 10.Insulator material(绝缘体材质)      | L:PPS P:PEEK   |

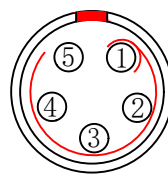
| Sum up(总结)                  |   |
|-----------------------------|---|
| Series(系列)                  | B                                       |
| Shell style/model (外壳样式/型号) | ZGG:With a nut (post-fixed)带有一个螺母 (后固定) |
| Button (按键)                 | A button(一个按键)                          |
| Termination type (终止类型)     | Mother solder tin(母焊锡)                  |
| Line diameter awg(线材直径)     | 34AWG-28AWG                             |
| Cable diameterφ (电缆直径)      | φ1.4-3.0MM                              |
| Match plug(匹配插头)            | TGG.00.P04.CXAD32H                      |

| Location pin combination (定位销组合) |                                   |           |                         |
|----------------------------------|-----------------------------------|-----------|-------------------------|
| (编号) Number                      | Number of positioning pins(定位销数量) | Angle(角度) | Series(系列)--00B         |
| G                                | One(1)                            |           | (Zero degrees)0°        |
| A                                | Two(2)                            | A         | Thirty degrees(30°)     |
| B                                | Two(2)                            |           | Sixty degrees(60°)      |
| C                                |                                   | β         |                         |
| D                                |                                   |           |                         |
| E                                |                                   |           |                         |
| F                                |                                   | γ         |                         |
| J                                | Two(2)                            |           | Forty-five degrees(45°) |
| K                                |                                   |           |                         |
| L                                |                                   |           |                         |

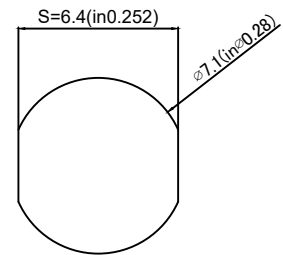
|        | A      | B      | C√     | ANGLE   |       |
|--------|--------|--------|--------|---------|-------|
| 5-10   | ±0.02  | ±0.05  | ±0.1   | 0°-30°  | ±0.1° |
| 50-100 | ±0.1   | ±0.15  | ±0.2   | 61°-90° | ±0.5° |
| 50-100 | ±0.15  | ±0.2   | ±0.25  |         |       |
| 100-   | ±0.15% | ±0.20% | ±0.25% |         |       |



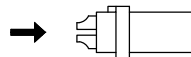
|    | A     | L      | E      | S1    | S2    |
|----|-------|--------|--------|-------|-------|
| MM | φ8    | 12     | M7*0.5 | 6.3   | 9     |
| in | 0.315 | 0.4725 |        | 0.248 | 0.354 |



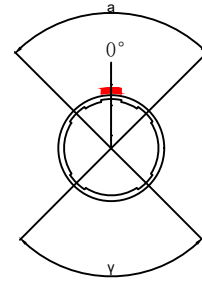
Welded surface (焊接面)



Panel hole size (面板开孔尺寸)



(Welded mother adhesive core) 焊接型母胶芯



Positive view of the socket (插座正视图)

ZG G.00. P05.C X L

- Model(型号)
- Positioning pin(定位销)
- Series(系列)
- Needle core configuration(针芯配置)
- Outer casing(外壳)
- Insulator(绝缘体)
- Needle core(针芯)

|                                  |  |          |                                      |               |          |  |
|----------------------------------|--|----------|--------------------------------------|---------------|----------|--|
| DESIGNED (设计)                    |  | DATE(日期) |                                      | SCALE(比例)     | N/A(不适用) | MODEL TYPE<br>型号类型: ZGG.00B.P05.CXL        |
| CHECKED (校对)                     |  | DATE(日期) |                                      | VIEW(视图)      |          | PART NO. 00B5-core socket<br>名称: 00B5芯插座   |
| APPROVED (审核)                    |  | DATE(日期) |                                      | UNIT(单位)      | MM       | DWG NO.:                                   |
| REVISIONS                        |  |          |                                      | MATERIAL (材料) |          |  |
| www.helloxkb.com www.helloxkb.cn |  |          | XKB INDUSTRIAL PRECISION CO.,LIMITED |               |          | WEIGHT(重量) SHEET(表) REVISION(修订)<br>1/1 A0 |

## X-ON Electronics

Largest Supplier of Electrical and Electronic Components

*Click to view similar products for [Standard Circular Connector](#) category:*

*Click to view products by [XKB](#) manufacturer:*

Other Similar products are found below :

[600273N007](#) [6134-336-13149](#) [6134-337-11149](#) [6134-337-2390](#) [6134-341-17149](#) [67-02E12-60PX](#) [680-SMG](#) [CXS3102A181S](#)  
[D38999/20FC8SA L/C](#) [75-190216-08S](#) [75-190611-03S](#) [75-474014-05S](#) [75-474618-04S](#) [75-474620-07P](#) [799539-000](#) [805-005-07NF11-19PC](#)  
[805-005-07NF15-7PA](#) [FMP.2M.310.XLCT](#) [836783-1](#) [862256-1](#) [866857-1](#) [867865-1](#) [PT08P-14-19S](#) [PT08P-14-5S](#) [QCM019PC2DC012B](#)  
[121583-0217](#) [121667-0020](#) [RD10A16-19-P6CS051/1](#) [RD16A14-12-S6CS051/2](#) [1301240268](#) [1301240275](#) [1301860906](#) [DCU-08BFEA-](#)  
[LL7001](#) [RM15WTP-CP\(5\)\(71\)](#) [14482](#) [16283-18](#) [1877910-1](#) [206039-3](#) [206323-1](#) [207002-2](#) [207682-1](#) [CA06COME14SA7P](#) [211777-1](#) [JL04-](#)  
[1012CK\(05\)-R](#) [JL04V-2A28-11PE-R](#) [JL04V-2E10SL-3PE-B-R](#) [JL04V-2E20-15PE-B-R](#) [JL04V-2E20-4PE-B-R](#) [JL04V-2E24-10PE\(G\)-B-R](#)  
[JL04V-6A24-11SE-EB-R](#)