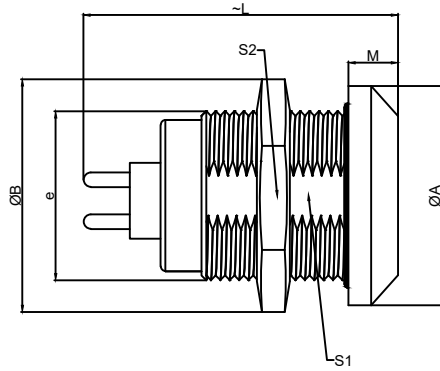


1.View and size(视图及尺寸)

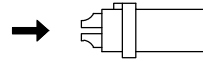
| Main technical indicators(主要技术指标) | |
|-----------------------------------|-----------------------------------------------------------------------------------------------------------------------|
| 1.Mating (插拔次数) | > 3000 |
| 2.Working Temperature (温度) | -55~+150 °C |
| 3.IP Rating (防护级别) | IP66/IP68 |
| 4. 振动 | 10z 2000z, acceleration 147m / S2, instantaneous break ≤ 1US/10z2000z加速度 147m/S2, 瞬断≤1Us |
| 5. 盐雾 | 5% NaCl for 48 hours/5%NaCl雾中 48小时 |
| 6. 冲击 | 980m / S2, instantaneous ≤ 1 US, insulation resistance: > 3000 Ω (normal state)/980m/S2,,瞬间 ≤1 Us 绝缘电阻: > 3000 Ω (常态) |
| 7.Diameter of socket end(插合端直径) | φ0.9 |
| 8.Testing Voltage (测试电压) | 1300V |
| 9.Working Voltage (工作电压) | 1050V |
| 10.Rated Current (额定电流) | 10A |
| 11.Shell material(壳体材质) | Brass (chromium plating) shell and chuck nut/(nickel plating) pin sleeve and middleware/黄铜(镀铬)外壳和夹头螺母/(镀镍)插销套和中间件 |
| 12.Pin Material(插针材料) | Copper alloy gold plating(铜合金镀金) |
| 13.Insulator material(绝缘体材质) | PPS |

| Sum up(总结) | |
|-----------------------------|-----------------------------------------------|
| Series(系列) | K |
| Shell style/model (外壳样式/型号) | ZGG: :Fixed receptacle, nut fixing/固定插座, 螺母固定 |
| Button (按键) | A button(一个按键) |
| Termination type (终止类型) | Female print PCB(印刷PCB) |
| Line diameter awg(线材直径) | 28-20AWG |
| Cable diameterφ (电缆直径) | 0-0 |
| Matching parts(配件) | TGG.0K.P02.CLAC45H |

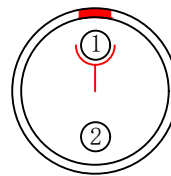
| | A | B | C√ | ANGLE | |
|--------|--------|--------|--------|---------|-------|
| 5-10 | ±0.02 | ±0.05 | ±0.1 | 0°-30° | ±0.1° |
| 50-100 | ±0.1 | ±0.15 | ±0.2 | 61°-90° | ±0.5° |
| 50-100 | ±0.15 | ±0.2 | ±0.25 | | |
| 100- | ±0.15% | ±0.20% | ±0.25% | | |



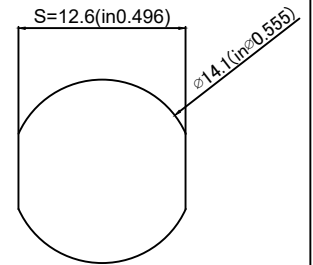
| | A | B | L | M | E | S1 | S2 |
|----|------|------|------|------|-------|------|------|
| MM | 18 | 19.5 | 23.3 | 4.0 | M14*1 | 12.5 | 17 |
| in | 0.71 | 0.77 | 0.92 | 0.16 | | 0.49 | 0.67 |



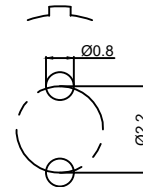
(Welded mother adhesive core)
焊接型母胶芯



Welded surface
(焊接面)



Pane hole size
(面板开孔尺寸)



Pcb plate opening size
(PCB板开孔尺寸)

ZGG.0K.P02.C L N

Model(型号)

Positioning pin(定位销)

Series(系列)

Needle core configuration(针芯配置)

Outer casing(外壳)

Insulator(绝缘体)

Needle core(针芯)

| | | | | | | |
|----------------------------------|--|--------------------------------------|--|---------------|----------|--------------------------|
| DESIGNED (设计) | | DATE(日期) | | SCALE(比例) | N/A(不适用) | MODEL TYPE |
| CHECKED (校对) | | DATE(日期) | | VIEW(视图) | | 型号类型: ZGG.0K.P02.CLN |
| APPROVED (审核) | | DATE(日期) | | UNIT(单位) | MM | PART NO. 0K2-core socket |
| REVISIONS | | | | MATERIAL (材料) | | 名称: 0K2芯插座 |
| www.helloxkb.com www.helloxkb.cn | | XKB INDUSTRIAL PRECISION CO.,LIMITED | | | | DWG NO.: |
| | | | | | | WEIGHT(重量) |
| | | | | | | SHEET(表) |
| | | | | | | REVISION(修订) |
| | | | | | | 1/1 |
| | | | | | | A0 |

X-ON Electronics

Largest Supplier of Electrical and Electronic Components

Click to view similar products for [Standard Circular Connector](#) category:

Click to view products by [XKB](#) manufacturer:

Other Similar products are found below :

[600273N007](#) [6134-336-13149](#) [6134-337-11149](#) [6134-337-2390](#) [6134-341-17149](#) [6280-4SG-516](#) [6280-7SG-3DC](#) [6282-2SG-315](#) [66200A-10](#)
[67-02E12-60PX](#) [680-SMG](#) [CXS3102A181S](#) [7251-5SG-300](#) [7282-3PG-300-CH3](#) [75-190218-10P](#) [75-190611-03S](#) [75-474014-05S](#) [75-474118-](#)
[10P](#) [75-474211-03P](#) [75-474218-19S](#) [75-474618-01S](#) [75-474618-04P](#) [75-474618-04S](#) [75-474620-07P](#) [799539-000](#) [MI8-SE](#) [80-190222-18P](#)
[805-005-07NF11-19PC](#) [805-005-07NF15-7PA](#) [8280-7PG-519](#) [8282-5PG-519](#) [862256-1](#) [866857-1](#) [867865-1](#) [PT08P-14-19S](#) [PT08P-14-5S](#)
[PT08P-8-3S](#) [120-1833-000](#) [QCM019PC2DC012B](#) [121583-0217](#) [HEX40-AB-00-21-A9-1](#) [121667-0020](#) [RD10A16-19-P6CS051/1](#) [RD16A14-](#)
[12-S6CS051/2](#) [1301240347](#) [1301790476](#) [1301240268](#) [1301240275](#) [1301860183](#) [1301860906](#)