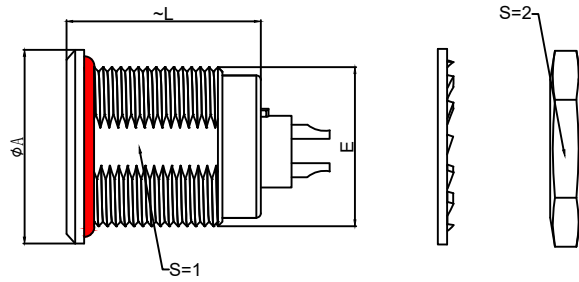
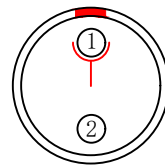


1.View and size(视图及尺寸)

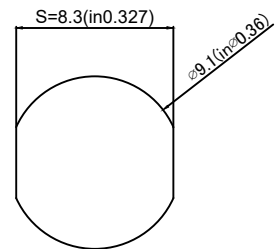
Main technical indicators(主要技术指标)	
1.Mating (插拔次数)	5000
2.Working Temperature (温度)	-55~+250 °C
3.IP Rating (防护级别)	IP68
4. Resistance to vibration(抗振性)	15 g [10 Hz - 2000 Hz]
5.盐雾	5% NaCl for 48 hours/5%NaCl雾气中48小时
6. Shock Resistance (抗冲击性)	100 g [6 ms] 100 g [6 毫秒]
7.Shielding efficiency (min)屏蔽效率 (最小值)	75 dB (10 MHz 时)
8.Shielding efficiency (min)屏蔽效率 (最小值)	40 dB (1 GHz 时)
9.Diameter of socket end(插合端直径)	φ0.9
10.Testing Voltage (测试电压)	1300V
11.Working Voltage (工作电压)	1050V
12.Rated Current (额定电流)	10A
13.Shell material(壳体材质)	Brass (chromium plating) shell and chuck nut/(nickel plating) pin sleeve and middleware/黄铜 (镀铬) 外壳和夹头螺母/ (镀镍) 插销套和中间件
14.Pin Material(插针材料)	Copper alloy gold plating(铜合金镀金)
15.Insulator material(绝缘体材质)	L:PPS P:PEEK



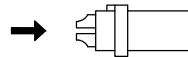
	A	L	E	S1	S2
MM	φ12	14.5	M9*0.6	8.2	11
in	0.47	0.57		0.32	0.43



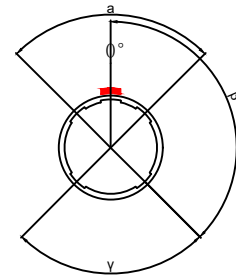
Welded surface (焊接面)



Panel hole size (面板开孔尺寸)



(Welded mother adhesive core) 焊接型母胶芯

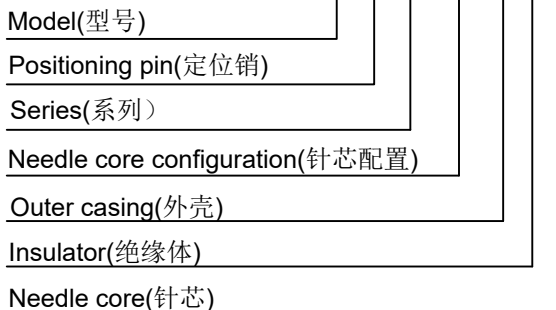


Positive view of the socket (插座正视图)

Sum up(总结)	
Series(系列)	T
Shell style/model (外壳样式/型号)	ZGG:With a nut (post-fixed)带有一个螺母 (后固定)
Button (按键)	A button(一个按键)
Termination type (终止类型)	Male solder(公焊锡)
Line diameter awg(线材直径)	28AWG-20AWG
Cable diameterφ (电缆直径)	0-0
Matching parts(配件)	TGG.0T.P02.CXADXXH

	A	B	C√	ANGLE	
5-10	±0.02	±0.05	±0.1	0°-30°	±0.1°
50-100	±0.1	±0.15	±0.2	61°-90°	±0.5°
50-100	±0.15	±0.2	±0.25		
100-	±0.15%	±0.20%	±0.25%		

ZGG.0T.P02.C X L



DESIGNED (设计)		DATE(日期)		SCALE(比例)	N/A(不适用)	MODEL TYPE 型号类型: ZGG.0T.P02.CXL
CHECKED (校对)		DATE(日期)		VIEW(视图)		PART NO. 0T2-core socket 名称: 0T2芯插座
APPROVED (审核)		DATE(日期)		UNIT(单位)	MM	DWG NO.:
REVISIONS				MATERIAL (材料)		
www.helloxkb.com www.helloxkb.cn			XKB INDUSTRIAL PRECISION CO.,LIMITED			WEIGHT(重量) SHEET(表) REVISION(修订) 1/1 A0

X-ON Electronics

Largest Supplier of Electrical and Electronic Components

Click to view similar products for [Standard Circular Connector](#) category:

Click to view products by [XKB](#) manufacturer:

Other Similar products are found below :

[600273N007](#) [6134-336-13149](#) [6134-337-11149](#) [6134-337-2390](#) [6134-341-17149](#) [67-02E12-60PX](#) [680-SMG](#) [CXS3102A181S](#)
[D38999/20FC8SA L/C](#) [75-190216-08S](#) [75-190611-03S](#) [75-474014-05S](#) [75-474618-04S](#) [75-474620-07P](#) [799539-000](#) [805-005-07NF11-19PC](#)
[805-005-07NF15-7PA](#) [FMP.2M.310.XLCT](#) [836783-1](#) [862256-1](#) [866857-1](#) [867865-1](#) [PT08P-14-19S](#) [PT08P-14-5S](#) [QCM019PC2DC012B](#)
[121583-0217](#) [121667-0020](#) [RD10A16-19-P6CS051/1](#) [RD16A14-12-S6CS051/2](#) [1301240268](#) [1301240275](#) [1301860906](#) [DCU-08BFEA-](#)
[LL7001](#) [RM15WTP-CP\(5\)\(71\)](#) [14482](#) [16283-18](#) [1877910-1](#) [206039-3](#) [206323-1](#) [207002-2](#) [207682-1](#) [CA06COME14SA7P](#) [211777-1](#) [JL04-](#)
[1012CK\(05\)-R](#) [JL04V-2A28-11PE-R](#) [JL04V-2E10SL-3PE-B-R](#) [JL04V-2E20-15PE-B-R](#) [JL04V-2E20-4PE-B-R](#) [JL04V-2E24-10PE\(G\)-B-R](#)
[JL04V-6A24-11SE-EB-R](#)