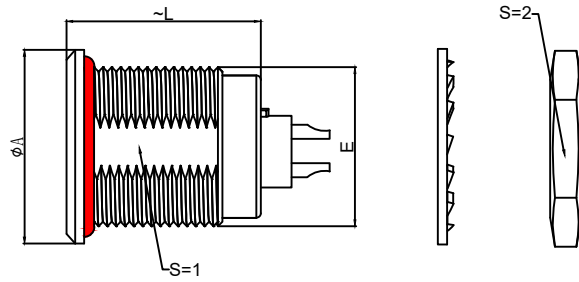
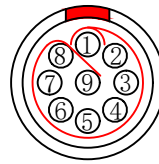


# 1.View and size(视图及尺寸)

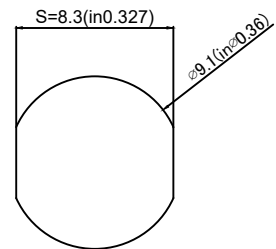
| Main technical indicators(主要技术指标)      |  |
|--|--|
| 1.Mating (插拔次数)                        | 5000   |
| 2.Working Temperature (温度)             | -55~+250 °C  |
| 3.IP Rating (防护级别)                     | IP68   |
| 4. Resistance to vibration(抗振性)        | 15 g [10 Hz - 2000 Hz]   |
| 5.盐雾                                   | 5% NaCl for 48 hours/5%NaCl雾气中 48小时  |
| 6. Shock Resistance (抗冲击性)             | 100 g [ 6 ms]<br>100 g [ 6 毫秒]   |
| 7.Shielding efficiency (min)屏蔽效率 (最小值) | 75 dB (10 MHz 时)   |
| 8.Shielding efficiency (min)屏蔽效率 (最小值) | 40 dB (1 GHz 时)  |
| 9.Diameter of socket end(插合端直径)        | φ0.5   |
| 10.Testing Voltage (测试电压)              | 600V   |
| 11.Working Voltage (工作电压)              | 500V   |
| 12.Rated Current (额定电流)                | 2A   |
| 13.Shell material(壳体材质)                | Brass (chromium plating) shell and chuck nut/( nickel plating) pin sleeve and middleware/黄铜 (镀铬) 外壳和夹头螺母/ (镀镍) 插销套和中间件 |
| 14.Pin Material(插针材料)                  | Copper alloy gold plating(铜合金镀金)   |
| 15.Insulator material(绝缘体材质)           | L:PPS P:PEEK   |



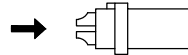
|    | A    | L    | E      | S1   | S2   |
|----|------|------|--------|------|------|
| MM | φ12  | 14.5 | M9*0.6 | 8.2  | 11   |
| in | 0.47 | 0.57 |        | 0.32 | 0.43 |



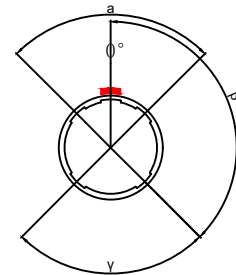
Welded surface (焊接面)



Panel hole size (面板开孔尺寸)



(Welded mother adhesive core) 焊接型母胶芯

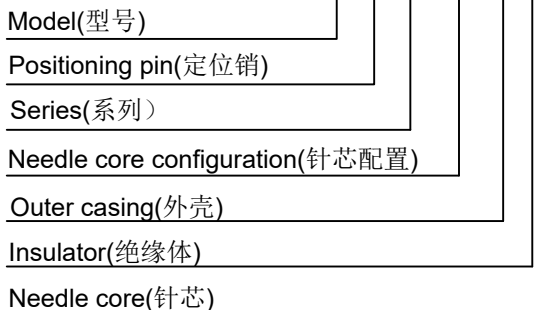


Positive view of the socket (插座正视图)

| Sum up(总结)                  |   |
|-----------------------------|---|
| Series(系列)                  | T                                       |
| Shell style/model (外壳样式/型号) | ZGG:With a nut (post-fixed)带有一个螺母 (后固定) |
| Button (按键)                 | A button(一个按键)                          |
| Termination type (终止类型)     | Male solder(公焊锡)                        |
| Line diameter awg(线材直径)     | 34AWG-28AWG                             |
| Cable diameterφ (电缆直径)      | 0-0                                     |
| Matching parts(配件)          | TGG.0T.P09.CXADXXH                      |

|        | A      | B      | C√     | ANGLE   |       |
|--------|--------|--------|--------|---------|-------|
| 5-10   | ±0.02  | ±0.05  | ±0.1   | 0°-30°  | ±0.1° |
| 50-100 | ±0.1   | ±0.15  | ±0.2   | 61°-90° | ±0.5° |
| 50-100 | ±0.15  | ±0.2   | ±0.25  |         |       |
| 100-   | ±0.15% | ±0.20% | ±0.25% |         |       |

ZGG.0T.P09.C X L



|                                  |  |          |                                      |               |          |  |
|----------------------------------|--|----------|--------------------------------------|---------------|----------|--|
| DESIGNED (设计)                    |  | DATE(日期) |                                      | SCALE(比例)     | N/A(不适用) | MODEL TYPE<br>型号类型: ZGG.0T.P09.CXL         |
| CHECKED (校对)                     |  | DATE(日期) |                                      | VIEW(视图)      |          | PART NO. 0T9-core socket<br>名称: 0T9芯插座     |
| APPROVED (审核)                    |  | DATE(日期) |                                      | UNIT(单位)      | MM       | DWG NO.:                                   |
| REVISIONS                        |  |          |                                      | MATERIAL (材料) |          |  |
| www.helloxkb.com www.helloxkb.cn |  |          | XKB INDUSTRIAL PRECISION CO.,LIMITED |               |          | WEIGHT(重量) SHEET(表) REVISION(修订)<br>1/1 A0 |

## X-ON Electronics

Largest Supplier of Electrical and Electronic Components

*Click to view similar products for [Standard Circular Connector](#) category:*

*Click to view products by [XKB](#) manufacturer:*

Other Similar products are found below :

[600273N007](#) [6134-336-13149](#) [6134-337-11149](#) [6134-337-2390](#) [6134-341-17149](#) [67-02E12-60PX](#) [680-SMG](#) [CXS3102A181S](#)  
[D38999/20FC8SA L/C](#) [75-190216-08S](#) [75-190611-03S](#) [75-474014-05S](#) [75-474618-04S](#) [75-474620-07P](#) [799539-000](#) [805-005-07NF11-19PC](#)  
[805-005-07NF15-7PA](#) [FMP.2M.310.XLCT](#) [836783-1](#) [862256-1](#) [866857-1](#) [867865-1](#) [PT08P-14-19S](#) [PT08P-14-5S](#) [QCM019PC2DC012B](#)  
[121583-0217](#) [121667-0020](#) [RD10A16-19-P6CS051/1](#) [RD16A14-12-S6CS051/2](#) [1301240268](#) [1301240275](#) [1301860906](#) [DCU-08BFEA-](#)  
[LL7001](#) [RM15WTP-CP\(5\)\(71\)](#) [14482](#) [16283-18](#) [1877910-1](#) [206039-3](#) [206323-1](#) [207002-2](#) [207682-1](#) [CA06COME14SA7P](#) [211777-1](#) [JL04-](#)  
[1012CK\(05\)-R](#) [JL04V-2A28-11PE-R](#) [JL04V-2E10SL-3PE-B-R](#) [JL04V-2E20-15PE-B-R](#) [JL04V-2E20-4PE-B-R](#) [JL04V-2E24-10PE\(G\)-B-R](#)  
[JL04V-6A24-11SE-EB-R](#)