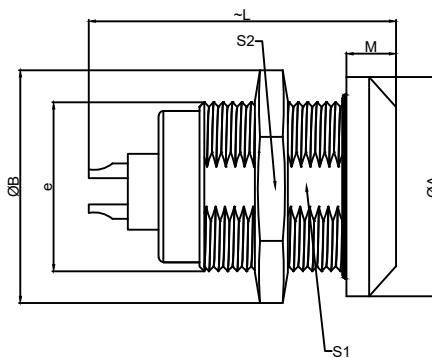
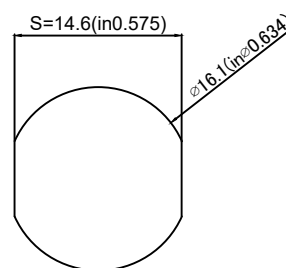


1.View and size(视图及尺寸)

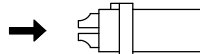
Main technical indicators(主要技术指标)	
1.Mating (插拔次数)	> 3000
2.Working Temperature (温度)	-55~+150 °C
3.IP Rating (防护级别)	IP66/IP68
4. 振动	10z 2000z, acceleration 147m / S2, instantaneous break ≤ 1US/10z2000z加速度 147m/S2, 瞬断≤1Us
5. 盐雾	5% NaCl for 48 hours/5%NaCl雾气中 48小时
6. 冲击	980m / S2, instantaneous ≤ 1 US, insulation resistance: > 3000 Ω (normal state)/980m/S2,,瞬间 ≤1 Us 绝缘电阻: > 3000 Ω (常态)
7.Diameter of socket end(插合端直径)	φ0.7
8.Testing Voltage (测试电压)	950V
9.Working Voltage (工作电压)	1150V
10.Rated Current (额定电流)	5A
11.Shell material(壳体材质)	Brass (chromium plating) shell and chuck nut/(nickel plating) pin sleeve and middleware/黄铜(镀铬)外壳和夹头螺母/(镀镍)插销套和中间件
12.Pin Material(插针材料)	Copper alloy gold plating(铜合金镀金)
13.Insulator material(绝缘体材质)	PPS



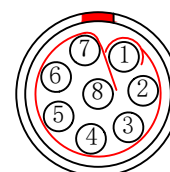
	A	B	L	M	E	S1	S2
MM	20	21.5	27.0	4.5	M16*1	14.5	19
in	0.79	0.85	1.06	0.18		0.57	0.75



Pane hole size (面板开孔尺寸)



(Welded mother adhesive core) 焊接型母胶芯



Welded surface (焊接面)

ZGG.1K.P08.C L L

- Model(型号)
- Positioning pin(定位销)
- Series(系列)
- Needle core configuration(针芯配置)
- Outer casing(外壳)
- Insulator(绝缘体)
- Needle core(针芯)

Sum up(总结)	
Series(系列)	K
Shell style/model (外壳样式/型号)	ZGG: :Fixed receptacle, nut fixing/固定插座, 螺母固定
Button (按键)	A button(一个按键)
Termination type (终止类型)	Mother solder tin(母焊锡)
Line diameter awg(线材直径)	30-22AWG
Cable diameterφ (电缆直径)	0-0
Matching parts(配件)	TGG.1K.P08.CLAC45H

	A	B	C√	ANGLE	
5-10	±0.02	±0.05	±0.1	0°-30°	±0.1°
50-100	±0.1	±0.15	±0.2	61°-90°	±0.5°
50-100	±0.15	±0.2	±0.25		
100-	±0.15%	±0.20%	±0.25%		

DESIGNED (设计)	DATE(日期)	SCALE(比例)	N/A(不适用)	MODEL TYPE
CHECKED (校对)	DATE(日期)	VIEW(视图)		型号类型: ZGG.1K.P08.CLL
APPROVED (审核)	DATE(日期)	UNIT(单位)	MM	PART NO. 1K8-core socket 名称: 1K8芯插座
REVISIONS		MATERIAL (材料)		DWG NO.:
www.helloxkb.com www.helloxkb.cn		XKB INDUSTRIAL PRECISION CO.,LIMITED		WEIGHT(重量) SHEET(表) REVISION(修订)
				1/1 A0

X-ON Electronics

Largest Supplier of Electrical and Electronic Components

Click to view similar products for [Standard Circular Connector](#) category:

Click to view products by [XKB](#) manufacturer:

Other Similar products are found below :

[600273N007](#) [6134-336-13149](#) [6134-337-11149](#) [6134-337-2390](#) [6134-341-17149](#) [67-02E12-60PX](#) [680-SMG](#) [CXS3102A181S](#)
[D38999/20FC8SA L/C](#) [75-190216-08S](#) [75-190611-03S](#) [75-474014-05S](#) [75-474618-04S](#) [75-474620-07P](#) [799539-000](#) [805-005-07NF11-19PC](#)
[805-005-07NF15-7PA](#) [FMP.2M.310.XLCT](#) [836783-1](#) [862256-1](#) [866857-1](#) [867865-1](#) [PT08P-14-19S](#) [PT08P-14-5S](#) [QCM019PC2DC012B](#)
[121583-0217](#) [121667-0020](#) [RD10A16-19-P6CS051/1](#) [RD16A14-12-S6CS051/2](#) [1301240268](#) [1301240275](#) [1301860906](#) [DCU-08BFEA-](#)
[LL7001](#) [RM15WTP-CP\(5\)\(71\)](#) [14482](#) [16283-18](#) [1877910-1](#) [206039-3](#) [206323-1](#) [207002-2](#) [207682-1](#) [CA06COME14SA7P](#) [211777-1](#) [JL04-](#)
[1012CK\(05\)-R](#) [JL04V-2A28-11PE-R](#) [JL04V-2E10SL-3PE-B-R](#) [JL04V-2E20-15PE-B-R](#) [JL04V-2E20-4PE-B-R](#) [JL04V-2E24-10PE\(G\)-B-R](#)
[JL04V-6A24-11SE-EB-R](#)