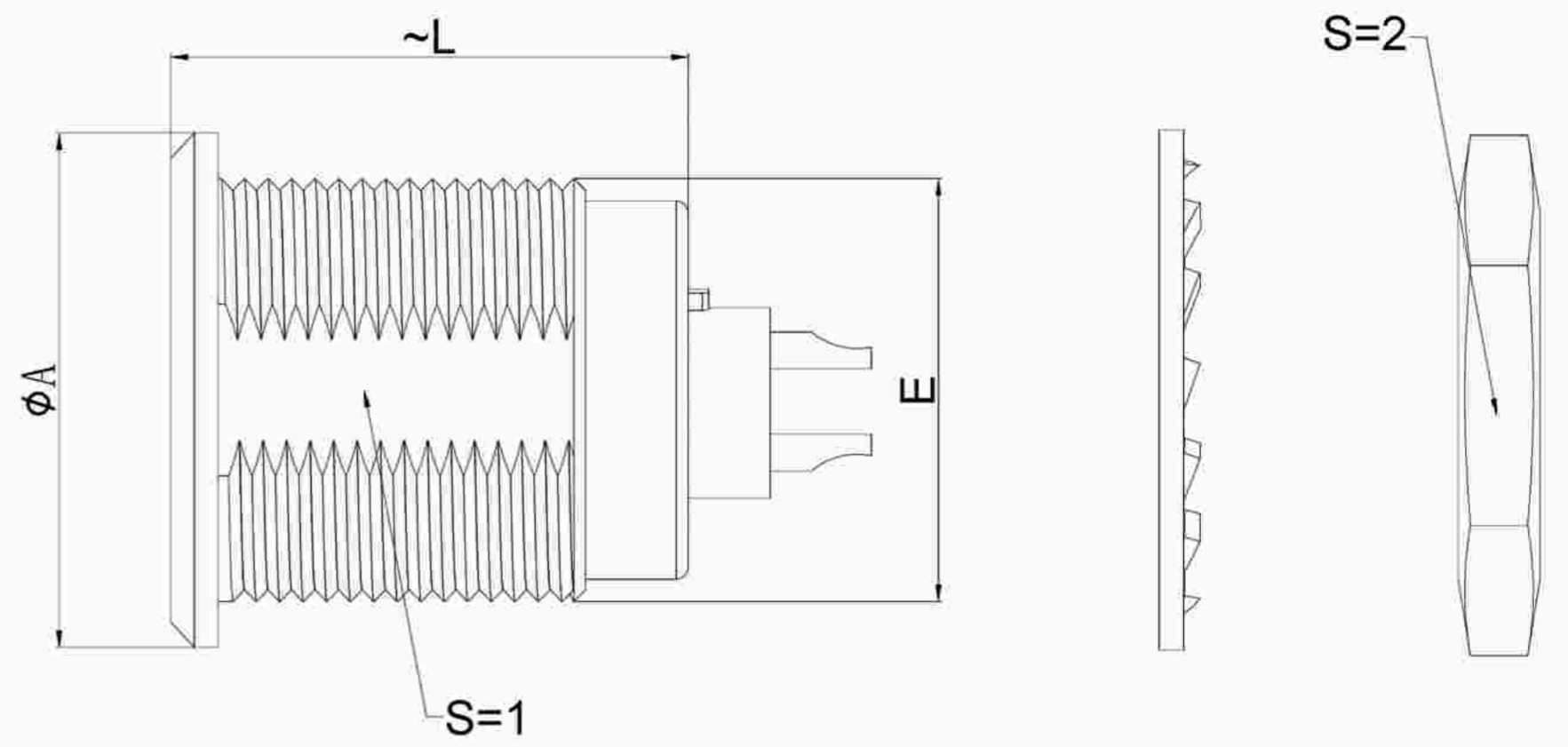


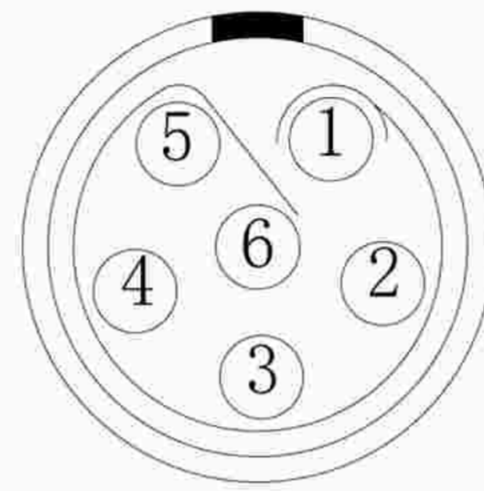
# 1.View and size(视图及尺寸)

| Main technical indicators(主要技术指标) |  |
|-----------------------------------|--|
| 1.Mating (插拔次数)                   | 5000   |
| 2.Working Temperature (温度)        | -55~+150 °C  |
| 3.IP Rating (防护级别)                | IP 50  |
| 4.Diameter of socket end(插合端直径)   | φ1.3   |
| 5.Testing Voltage (测试电压)          | 1350V  |
| 6.Working Voltage (工作电压)          | 1450V  |
| 7.Rated Current (额定电流)            | 12A  |
| 8.Shell material(壳体材质)            | Brass (chromium plating)/(nickel plating) fixation ring/黄铜(镀铬)/(镀镍)固定圈 |
| 9.Pin Material(插针材料)              | Copper alloy gold plating(铜合金镀金)                                       |
| 10.Insulator material(绝缘体材质)      | L:PPS P:PEEK   |

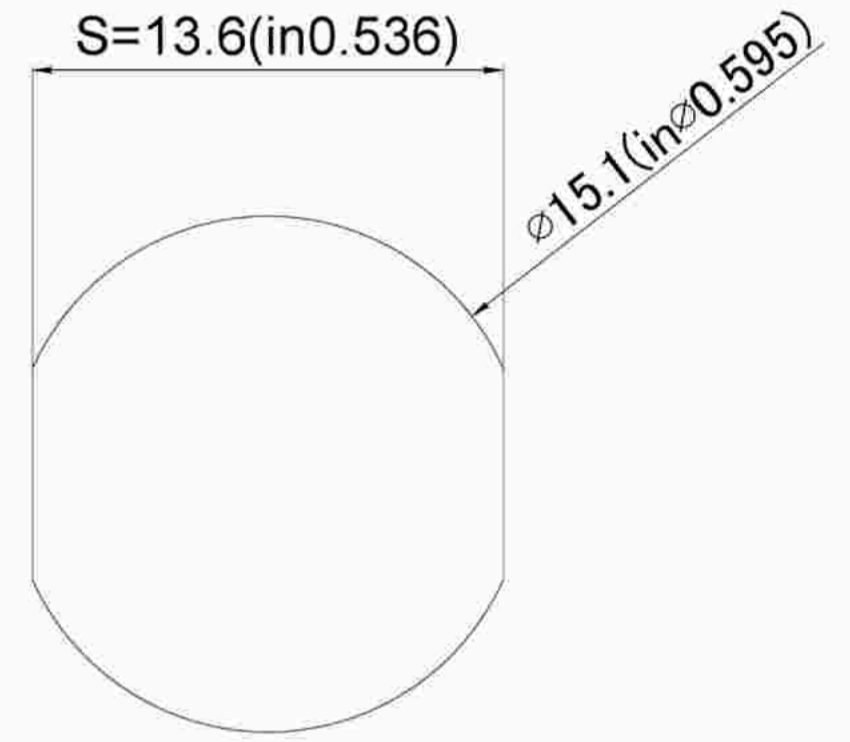


|    | A    | L    | E     | S1   | S2   |
|----|------|------|-------|------|------|
| MM | φ18  | 18.5 | M15*1 | 13.5 | 17   |
| in | 0.71 | 0.73 |       | 0.53 | 0.67 |

| Sum up(总结)                  |  |
|-----------------------------|--|
| Series(系列)                  | B                                      |
| Shell style/model (外壳样式/型号) | ZGG:With a nut (post-fixed)带有一个螺母(后固定) |
| Button (按键)                 | A button(一个按键)                         |
| Termination type (终止类型)     | Mother solder tin(母焊锡)                 |
| Line diameter awg(线材直径)     | 28-20AWG                               |
| Cable diameterφ (电缆直径)      | φ1.4-9.9MM                             |
| Match plug(匹配插头)            | TGG.2B.P06.CXAD52H                     |

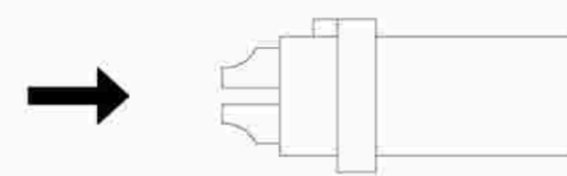


Welded surface (焊接面)

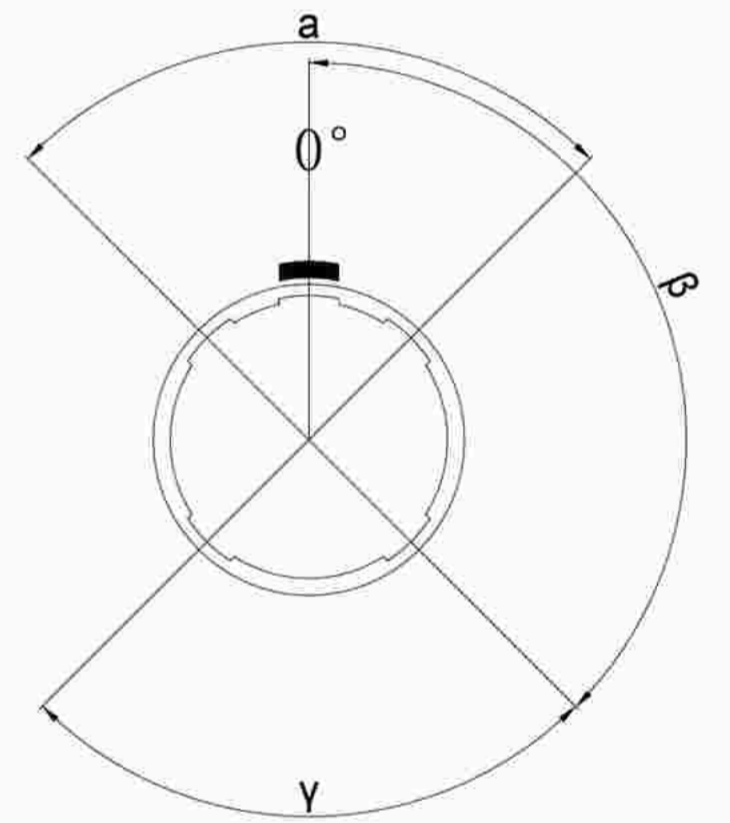


Pane hole size (面板开孔尺寸)

| Location pin combination(定位销组合) |                                   |           |                         |
|---------------------------------|-----------------------------------|-----------|-------------------------|
| (编号) Number                     | Number of positioning pins(定位销数量) | Angle(角度) | Series(系列)--2B          |
| G                               | One(1)                            |           | (Zero degrees)0°        |
| A                               | Two(2)                            | A         | Thirty degrees(30°)     |
| B                               | Two(2)                            |           | Forty-five degrees(45°) |
| C                               | Two(2)                            |           | Sixty degrees(60°)      |
| D                               | Two(2)                            | γ         | 95 degrees (95°)        |
| E                               | Two(2)                            | β         | 120 degrees(120°)       |
| F                               | Two(2)                            |           | 145 degrees(145°)       |
| J                               | Two(2)                            | A         | 37.5degrees(37.5°)      |
| K                               | Two(2)                            |           | 52.5degrees(52.5°)      |
| L                               | Two(2)                            | γ         | Seventy degrees(70°)    |



(Welded mother adhesive core) 焊接型母胶芯



Positive view of the socket (插座正视图)

|        | A      | B      | C√     | ANGLE   |       |
|--------|--------|--------|--------|---------|-------|
| 5-10   | ±0.02  | ±0.05  | ±0.1   | 0°-30°  | ±0.1° |
| 50-100 | ±0.1   | ±0.15  | ±0.2   | 61°-90° | ±0.5° |
| 50-100 | ±0.15  | ±0.2   | ±0.25  |         |       |
| 100-   | ±0.15% | ±0.20% | ±0.25% |         |       |

ZG G.2B.P06.C X L



DESIGNED(设计)  
**广东星坤科技股份有限公司**  
 CHECKED(校对)  
 APPROVED(审核)  
 日期  
 生效  
**REVISIONS**  
 文件工程章  
 www.helloxkb.com www.helloxkb.cn

|               |           |          |  |
|---------------|-----------|----------|--|
| DATE(日期)      | SCALE(比额) | N/A(不适用) | MODEL TYPE                             |
| DATE(日期)      | VIEW(视图)  |          | 型号类型: ZGG.2B.P06.CXL                   |
| DATE(日期)      | UNIT(单位)  | MM       | PART NO. 2B6 core socket<br>名称: 2B6芯插座 |
| MATERIAL (材料) |           |          | DWG NO.:                               |
|               |           |          | WEIGHT(重量) SHEET(表) REVISION(修订)       |
|               |           |          | 1/1 A0                                 |

## X-ON Electronics

Largest Supplier of Electrical and Electronic Components

*Click to view similar products for [Standard Circular Connector](#) category:*

*Click to view products by [XKB](#) manufacturer:*

Other Similar products are found below :

[600273N007](#) [6134-336-13149](#) [6134-337-11149](#) [6134-337-2390](#) [6134-341-17149](#) [67-02E12-60PX](#) [680-SMG](#) [CXS3102A181S](#)  
[D38999/20FC8SA L/C](#) [75-190216-08S](#) [75-190611-03S](#) [75-474014-05S](#) [75-474618-04S](#) [75-474620-07P](#) [799539-000](#) [805-005-07NF11-19PC](#)  
[805-005-07NF15-7PA](#) [FMP.2M.310.XLCT](#) [836783-1](#) [862256-1](#) [866857-1](#) [867865-1](#) [PT08P-14-19S](#) [PT08P-14-5S](#) [QCM019PC2DC012B](#)  
[121583-0217](#) [121667-0020](#) [RD10A16-19-P6CS051/1](#) [RD16A14-12-S6CS051/2](#) [1301240268](#) [1301240275](#) [1301860906](#) [DCU-08BFEA-](#)  
[LL7001](#) [RM15WTP-CP\(5\)\(71\)](#) [14482](#) [16283-18](#) [1877910-1](#) [206039-3](#) [206323-1](#) [207002-2](#) [207682-1](#) [CA06COME14SA7P](#) [211777-1](#) [JL04-](#)  
[1012CK\(05\)-R](#) [JL04V-2A28-11PE-R](#) [JL04V-2E10SL-3PE-B-R](#) [JL04V-2E20-15PE-B-R](#) [JL04V-2E20-4PE-B-R](#) [JL04V-2E24-10PE\(G\)-B-R](#)  
[JL04V-6A24-11SE-EB-R](#)