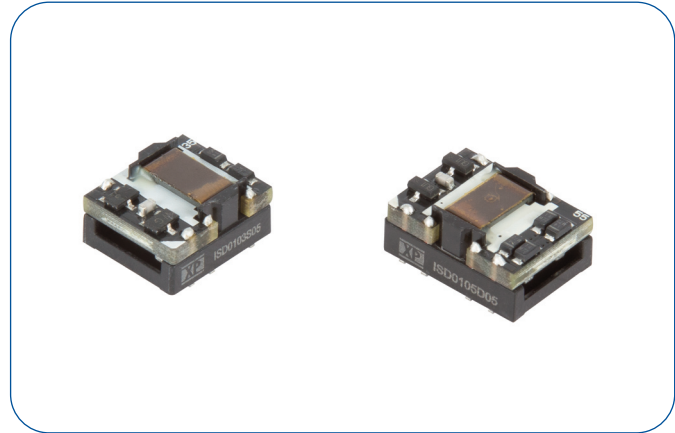


### 1 Watt

- Single & dual output
- $\pm 10\%$  input range
- Ultra compact SMD package
- 4.2 kVDC isolation
- 250 VAC/400 VDC working voltage
- Class B conducted emissions (with minimal additional components)
- Operating temperature  $-40\text{ }^{\circ}\text{C}$  to  $+105\text{ }^{\circ}\text{C}$
- Full Load at  $+100\text{ }^{\circ}\text{C}$
- MTBF  $>7.2$  MHours at  $25\text{ }^{\circ}\text{C}$  (MIL-HDBK-21F,  $+25\text{ }^{\circ}\text{C}$  GB)
- Tape & reel package available
- 3 year warranty



#### Dimensions:

ISD01xxS:  $0.5 \times 0.44 \times 0.27''$  ( $12.7 \times 11.2 \times 6.85$  mm)  
 ISD01xxD:  $0.6 \times 0.44 \times 0.27''$  ( $15.24 \times 11.2 \times 6.85$  mm)

The ISD01 series is a compact SMD, open frame construction providing a cost effective DC-DC converter with high performance features such as 4.2kV isolation, full load operating temperature to  $+100\text{ }^{\circ}\text{C}$ , high reliability and short circuit protection. Available in single or dual output variants this product family is ideal for signal conditioning and voltage matching.

### Models & Ratings

Input voltage	Output voltage	Output current	Input current <sup>(1,2)</sup>		Maximum capacitive load <sup>(3)</sup>	Efficiency	Model number <sup>(3)</sup>
			No load	Full load			
3V3 (2.97-3.63 V)	3.3 V	303 mA	50 mA	415 mA	220 $\mu\text{F}$	73%	ISD0103S3V3
	5.0 V	200 mA		405 mA	220 $\mu\text{F}$	75%	ISD0103S05
	$\pm 3.3$ V	$\pm 151$ mA		405 mA	$\pm 100$ $\mu\text{F}$	75%	ISD0103D3V3
	$\pm 5.0$ V	$\pm 100$ mA		390 mA	$\pm 100$ $\mu\text{F}$	78%	ISD0103D05
5V (4.5-5.5 V)	3.3 V	303 mA	40 mA	275 mA	220 $\mu\text{F}$	73%	ISD0105S3V3
	5.0 V	200 mA		265 mA	220 $\mu\text{F}$	76%	ISD0105S05
	$\pm 3.3$ V	$\pm 151$ mA		270 mA	$\pm 100$ $\mu\text{F}$	75%	ISD0105D3V3
	$\pm 5.0$ V	$\pm 100$ mA		260 mA	$\pm 100$ $\mu\text{F}$	78%	ISD0105D05

### Notes

1. Input currents measured at nominal input voltage.  
 2. Maximum capacitive load is per output.

3. For optional tape & reel package version, add suffix '-TR' e.g. ISD0105S05-TR.  
 (reel size 500 pcs)

### Input

Characteristic	Minimum	Typical	Maximum	Units	Notes & Conditions
Input Voltage Range	2.97		3.63	VDC	3V3 nominal
	4.50		5.50		5 V nominal
Input Filter	Internal Capacitor				
Input Surge			5	VDC for 1 s	3V3 nominal
			9		5 V nominal
Input Reflected Ripple Current			20	mA pk-pk	

### Output

Characteristic	Minimum	Typical	Maximum	Units	Notes & Conditions
Output Voltage	3.3		5	VDC	See Models and Ratings table
Initial Set Accuracy		±3.0		%	At 70% load
Output Voltage Balance			±1.0	%	For dual output with balanced loads
Minimum Load	10			%	Minimum load required
Line Regulation			±1.2	%/1%	Output changes by max of 1.2% for each 1% change in input voltage
Load Regulation		10	15/12	%	3.3 V output/5 V output
Ripple & Noise			150/±120	mV pk-pk	Single/Dual Output. 20 MHz bandwidth. Measured using 10 µF electrolytic capacitor in parallel with 0.1 µF ceramic capacitor
Short Circuit Protection					0.5 s max with auto recovery
Maximum Capacitive Load					See Models and Ratings table
Temperature Coefficient			0.03	%/°C	

### General

Characteristic	Minimum	Typical	Maximum	Units	Notes & Conditions
Efficiency		76		%	See Models and Ratings table
Isolation: Input to Output	4200			VDC	60s qualification test, 3s production test. Working voltage 250 VACrms/400 VDC insulation designation for safety approvals: functional
Isolation Resistance	10 <sup>9</sup>			Ω	At 1000 VDC
Isolation Capacitance		25		pF	
Switching Frequency	50		80	kHz	
Power Density			16.8	W/in <sup>3</sup>	
Mean Time Between Failure	7.2			MHrs	MIL-HDBK-217F, +25 °C GB
Weight		0.003 (1.52) 0.004 (1.80)		lb (g)	For single output For dual output
Moisture Sensitivity Level	Level 1				IPC/JEDEC J-STD-020D.1
PCB Pad Material	Copper				
PCB Pad Solder Coating	Lead free HASL				
Solder Process	IPC/JEDEC J-STD-020D.1				
Vibration	Tested to MIL-STD 810F Cat 24, 514. 5C-17 random vibration				
Case Flammability	UL 94V-0 Rated				Non conductive black plastic

### Environmental

Characteristic	Minimum	Typical	Maximum	Units	Notes & Conditions
Operating Temperature	-40		+105	°C	See Derating Curve.
Storage Temperature	-55		+125	°C	
Humidity			95	%RH	Non-condensing
Cooling					Natural convection

### EMC: Emissions

Phenomenon	Standard	Test Level	Notes & Conditions
Conducted	EN55032	Class B	See application notes
Radiated	EN55032	Class B	See application notes

### EMC: Immunity

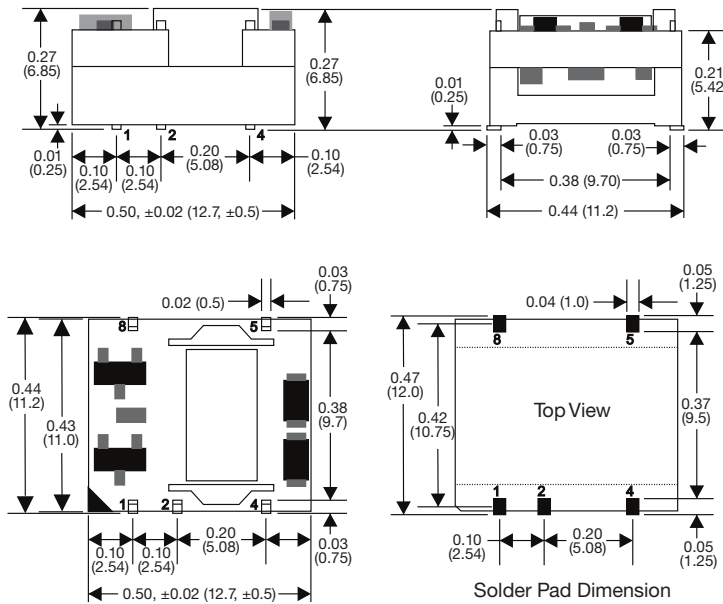
Phenomenon	Standard	Test Level	Criteria	Notes & Conditions
ESD Immunity	EN61000-4-2	±8 kV	A	Air Discharge
Radiated Immunity	EN61000-4-3	3 Vrms	A	
EFT/Burst	EN61000-4-4	2 kV	A	External components required, see application notes
Surge	EN61000-4-5	2 kV	A	External components required, see application notes
Conducted Immunity	EN61000-4-6	10 V rms	A	
Magnetic Fields	EN61000-4-8	100 A/m	A	

### Safety Approvals

Safety Agency	Safety Standard	Notes & Conditions
UL	UL60601-1, UL62368-1	Designed to meet
TUV	EN60601-1, EN62368-1	
CB	IEC60601-1, IEC62368-1	
CE	Meets all applicable directives	
UKCA	Meets all applicable legislation	

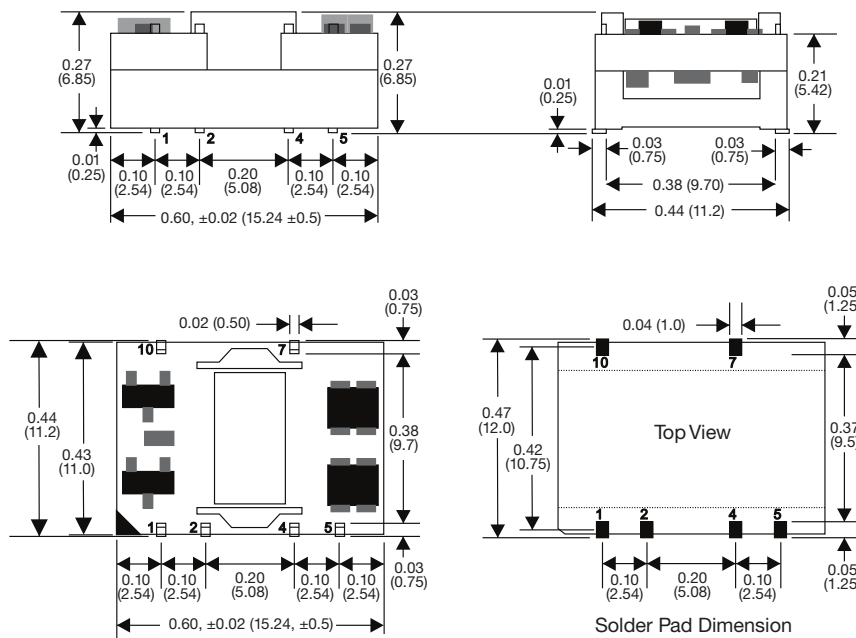
### Mechanical Details

#### Single Output



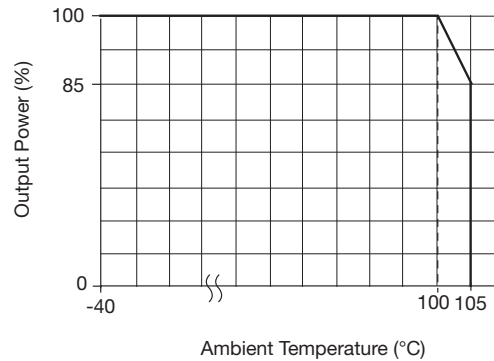
Pin Connections	
Pin	Single
1	-Vin
2	+Vin
4	-Vout
5	+Vout
8	N/C

#### Dual Output

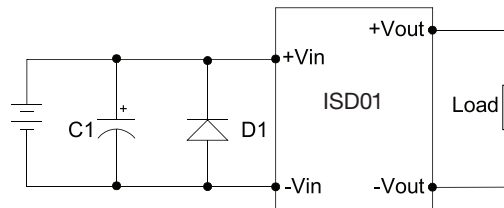


Pin Connections	
Pin	Dual
1	-Vin
2	+Vin
4	Common
5	-Vout
7	+Vout
10	N/C

### Application Notes



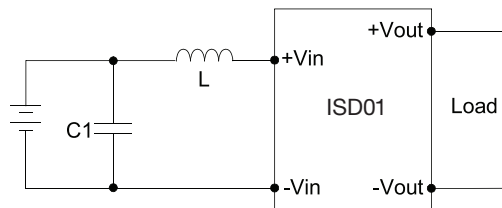
### EFT & Surge Filter



C1	D1
330 $\mu$ F/50 V	SMDJ9.0A

D1: Transient Voltage Suppression Diode

### EMI Filter



C1	L
1206,22 $\mu$ F	6.8 $\mu$ H

### Notes

1. All dimensions are in inches (mm)
2. Weight: 0.003 lbs (1.52 g) approx  
0.004 lbs (1.80 g) approx
3. Tolerance: X.XX $\pm$ 0.01 (X.X $\pm$ 0.25)
4. Pin Tolerance:  $\pm$ 0.002 ( $\pm$ 0.05)

### Protection

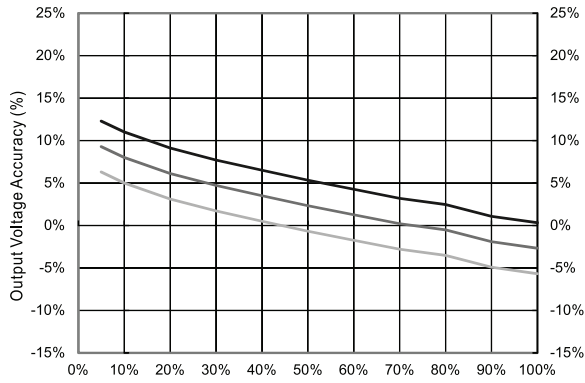
For UL compliance an input anti-surge line fuse must be fitted: Input 3V3, 1A slow burn fuse  
Input 5V, 0.5A slow burn fuse

UL recognised fuses are recommended and should be rated to the maximum input voltage as a minimum

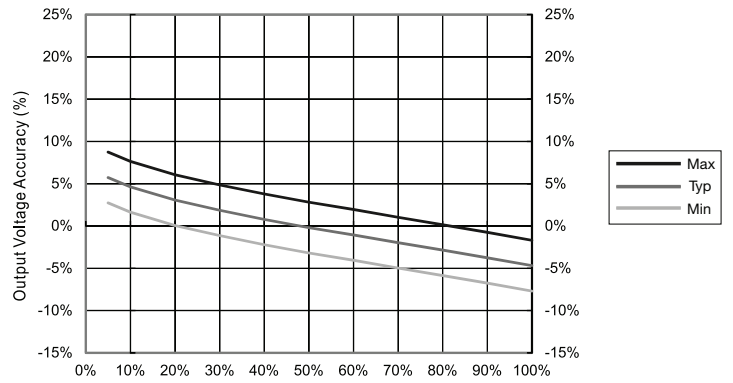
### Application Notes

#### Output Voltage Tolerance

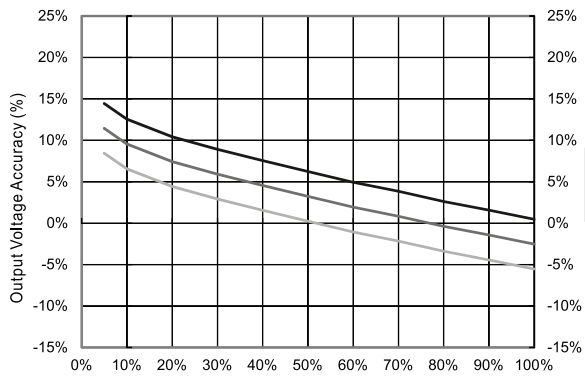
##### ISD0103S3V3



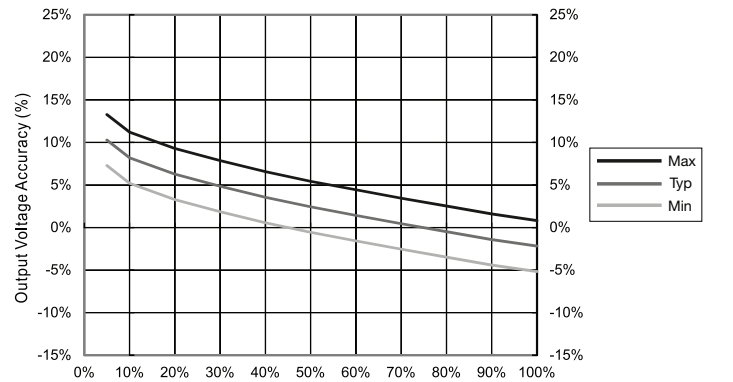
##### ISD0103S05



##### ISD0105S3V3



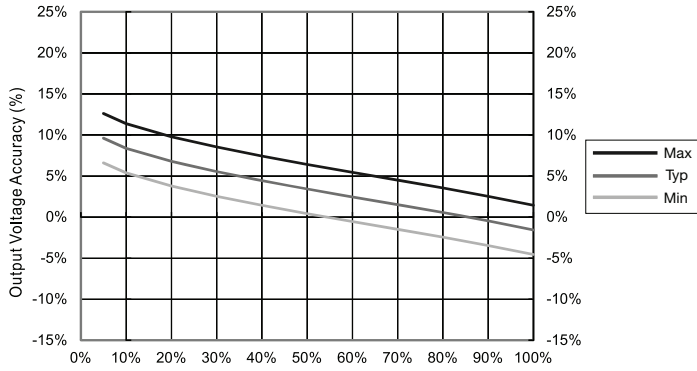
##### ISD0105S05



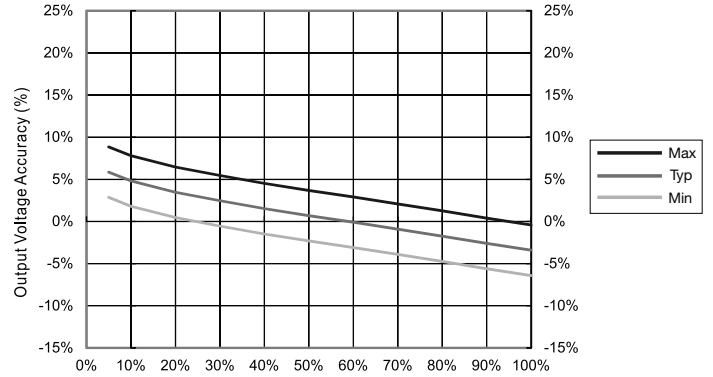
### Application Notes

#### Output Voltage Tolerance

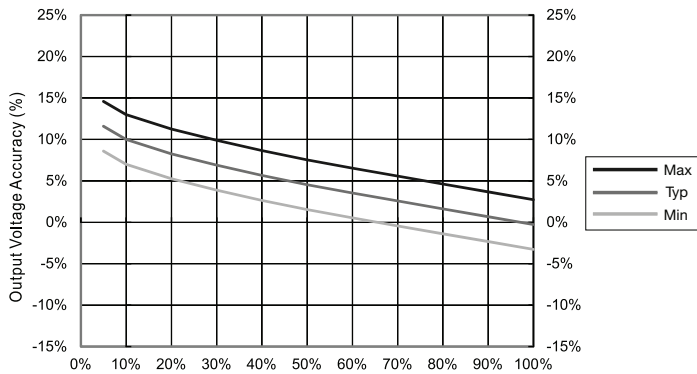
##### ISD0103D03



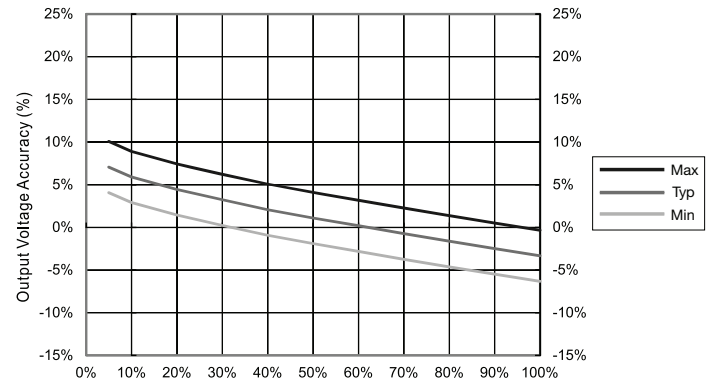
##### ISD0103D05



##### ISD0105D03



##### ISD0105D05



## X-ON Electronics

Largest Supplier of Electrical and Electronic Components

*Click to view similar products for [Isolated DC/DC Converters](#) category:*

*Click to view products by [XP Power](#) manufacturer:*

Other Similar products are found below :

[ESM6D044440C05AAQ](#) [FMD15.24G](#) [PSL486-7LR](#) [Q48T30020-NBB0](#) [JAHW100Y1](#) [SPB05C-12](#) [SQ24S15033-PS0S](#) [18952](#) [19-130041](#)  
[CE-1003](#) [CE-1004](#) [GQ2541-7R](#) [RDS180245](#) [MAU228](#) [J80-0041NL](#) [DFC15U48D15](#) [XGS-0512](#) [XGS-1205](#) [XGS-1212](#) [XGS-2412](#) [XGS-2415](#) [XKS-1215](#) [06322](#) [NCT1000N040R050B](#) [SPB05B-15](#) [SPB05C-15](#) [L-DA20](#) [DCG40-5G](#) [QME48T40033-PGB0](#) [XKS-2415](#) [XKS-2412](#)  
[XKS-1212](#) [XKS-1205](#) [XKS-0515](#) [XKS-0505](#) [XGS-2405](#) [XGS-1215](#) [XGS-0515](#) [PS9Z-6RM4](#) [73-551-5038I](#) [AK1601-9RT](#) [VI-N61-CM](#) [VI-R5022-EXWW](#) [PSC128-7iR](#) [RPS8-350ATX-XE](#) [DAS1004812](#) [PQA30-D24-S24-DH](#) [VI-M5F-CQ](#) [VI-LN2-EW](#) [VI-PJW01-CZY](#)