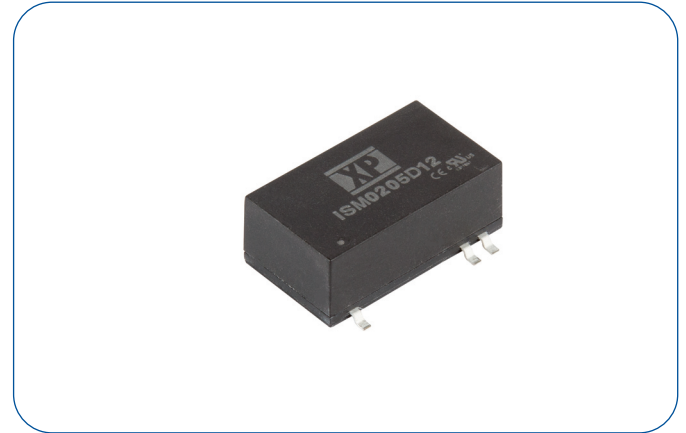


### 2 Watt

- International medical safety approvals
- Single & dual unregulated outputs
- Compact SMD package
- 4kV VAC reinforced isolation
- 1 x MOPP at 300 VAC
- 2  $\mu$ A patient leakage current
- Operating temperature -25 °C to +105 °C
- Full load to 60°C convection
- Tape & reel package available
- 3 year warranty

The ISM02 provides a compact cost effective SMD solution for healthcare applications providing 1 MOPP, 2 MOOP and IEC60601-1 compliance. Features include a high operating temperature, low leakage current, reinforced insulation and short circuit protection.



#### Dimensions:

**ISM02:**  
0.94 x 0.71 x 0.36" (24.0 x 18.1 x 9.3 mm)

### Models & Ratings

Input voltage	Output voltage	Output current		Input current <sup>(1)</sup>		Maximum capacitive load <sup>(2)</sup>	Efficiency <sup>(6)</sup>	Model number <sup>(3)</sup>
		Max	Min	No load	Full load			
5V (4.5-5.5V)	5V	400 mA	8.0 mA	90 mA	605 mA	330 $\mu$ F	72%	ISM0205S05
	12V	165 mA	3.0 mA		600 mA	330 $\mu$ F	72%	ISM0205S12
	15V	133 mA	2.5 mA		605 mA	330 $\mu$ F	72%	ISM0205S15
	$\pm$ 12V	$\pm$ 83 mA	$\pm$ 1.5 mA		555 mA	$\pm$ 100 $\mu$ F	72%	ISM0205D12
	$\pm$ 15V	$\pm$ 66 mA	$\pm$ 1.0 mA		540 mA	$\pm$ 100 $\mu$ F	73%	ISM0205D15
12V (10.8-13.2V)	5V	400 mA	8.0 mA	40 mA	255 mA	330 $\mu$ F	70%	ISM0212S05
	12V	165 mA	3.0 mA		250 mA	330 $\mu$ F	72%	ISM0212S12
	15V	133 mA	2.5 mA		250 mA	330 $\mu$ F	72%	ISM0212S15
	$\pm$ 12V	$\pm$ 83 mA	$\pm$ 1.5 mA		225 mA	$\pm$ 100 $\mu$ F	74%	ISM0212D12
	$\pm$ 15V	$\pm$ 66 mA	$\pm$ 1.0 mA		220 mA	$\pm$ 100 $\mu$ F	75%	ISM0212D15
24V (21.6-26.4V)	5V	400 mA	8.0 mA	30 mA	125 mA	330 $\mu$ F	68%	ISM0224S05
	12V	165 mA	3.0 mA		125 mA	330 $\mu$ F	68%	ISM0224S12
	15V	133 mA	2.5 mA		125 mA	330 $\mu$ F	68%	ISM0224S15
	$\pm$ 12V	$\pm$ 83 mA	$\pm$ 1.5 mA		110 mA	$\pm$ 100 $\mu$ F	74%	ISM0224D12
	$\pm$ 15V	$\pm$ 66 mA	$\pm$ 1.0 mA		110 mA	$\pm$ 100 $\mu$ F	75%	ISM0224D15

### Notes

1. Input currents measured at nominal input voltage.
2. Maximum capacitive load is per output.
3. For optional water washable version add suffix '-P'.

4. Add suffix '-TR' for tape and reel. MOQ 200 pcs.
5. Standard tube quantity 10 pcs.
6. Measured at maximum load.

### Input

Characteristic	Minimum	Typical	Maximum	Units	Notes & Conditions
Input Voltage Range	4.5		5.5	VDC	5 V nominal
	10.8		13.2		12 V nominal
	21.6		26.4		24 V nominal
Input Filter	Internal Pi type filter				
Input Surge			9	VDC for 1 s	5 V nominal
			18		12 V models
			30		24 V models

### Output

Characteristic	Minimum	Typical	Maximum	Units	Notes & Conditions
Output Voltage	5		30	VDC	See Models and Ratings table
Initial Set Accuracy		±2.0	±4.0	%	
Output Voltage Balance		±0.1	±1.0	%	For dual output with balanced loads
Minimum Load				A	See Models and Ratings table
Line Regulation		±1.2	±1.5	%	
Load Regulation			10	%	From 20% to 100% load. 5V output version is 12% max
Cross Regulation			±5.0	%	On dual output models when one load is varied between 25% and 100% and other is fixed at 100%
Transient Response		3	5	% deviation	Recovery within 1% in less than 250 µs for a 25% load change.
Ripple & Noise			150	mV pk-pk	20 MHz bandwidth. Measured using 0.47 µF ceramic capacitor.
Short Circuit Protection			0.5	s	With auto recovery
Maximum Capacitive Load					See Models and Ratings table
Temperature Coefficient			0.02	%/°C	

### General

Characteristic	Minimum	Typical	Maximum	Units	Notes & Conditions
Efficiency		72		%	See Models and Ratings table
Isolation: Input to Output	4000			VAC	60 s, reinforced isolation at 300 VAC, 1 x MOPP/2 x MOOP
	6000			VDC	1 s
Leakage Current			2	µA	240 VAC, 60 Hz
Isolation Resistance	10 <sup>9</sup>			Ω	At 500 VDC
Isolation Capacitance		15	20	pF	
Switching Frequency	50	80	100	kHz	
Power Density			12.2	W/in <sup>3</sup>	
Mean Time Between Failure		2		MHrs	MIL-HDBK-217F, +25 °C GB
Lead-Free Reflow Solder Process	IPC/JEDEC J-STD-020D.1				
Case Material	Non conductive black plastic. UL94V-0 rated. Not suitable for water washing.				
Pin Material	Solder-coated phosphor bronze				
Weight		0.01 (3.75)		lb (g)	
Moisture Sensitivity Level	Level 2				IPC/JEDEC J-STD-020D.1

### Environmental

Characteristic	Minimum	Typical	Maximum	Units	Notes & Conditions
Operating Temperature	-40		+105	°C	See derating curve
Storage Temperature	-50		+125	°C	
Case Temperature			+105	°C	
Humidity			95	%RH	Non-condensing
Cooling					Natural convection

### Safety Approvals

Safety Agency	Safety Standard	Notes & Conditions
CB Medical	IEC60601-1	
UL Medical	ANSI AMMI ES60601-1	
EN Medical	EN60601-1	
UL ITE	UL/cUL60950-1, UL/cUL62368-1	
CE	Meets all applicable directives	
UKCA	Meets all applicable legislation	

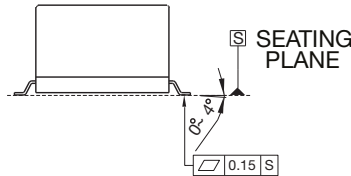
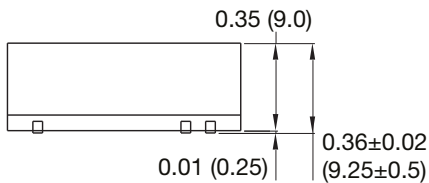
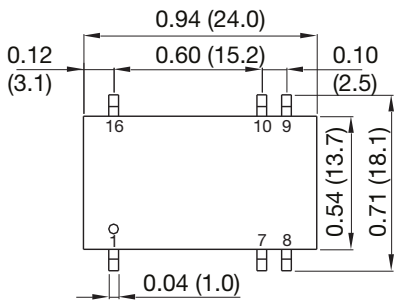
### EMC: Emissions

Phenomenon	Standard	Test Level	Notes & Conditions
Conducted	EN55011	Class A	See Application Notes

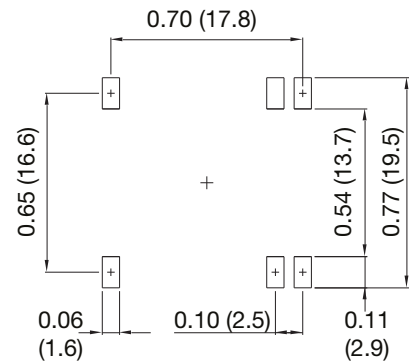
### EMC: Immunity

Phenomenon	Standard	Test Level	Criteria	Notes & Conditions
ESD	EN61000-4-2	±15 kV air discharge, ±8 kV contact	A	
Radiated	EN61000-4-3	10 V/m	A	
EFT/Burst	EN61000-4-4	±2 kV	A	
Surge	EN61000-4-5	±1 kV	A	
Conducted	EN61000-4-6	6kV rms	A	
Magnetic Fields	EN61000-4-8	30 A/m	A	

### Mechanical Details



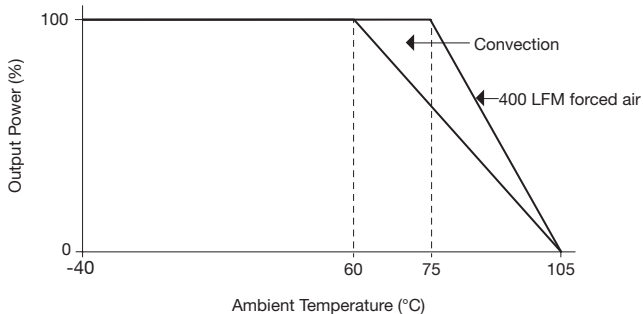
### Connecting Pin Pattern



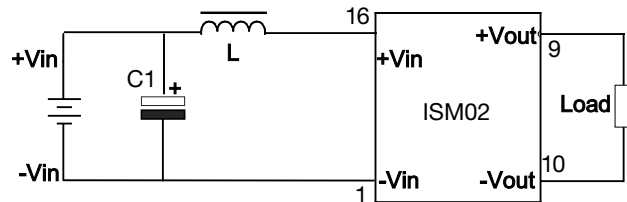
Pin Connections		
Pin	Single	Dual
1	-Vin	-Vin
7	No Connection	No Connection
8	No Connection	Common
9	+Vout	+Vout
10	-Vout	-Vout
16	+Vin	+Vin

### Application Notes

#### Derating Curve



#### EMC Circuit for Class A



C1	L
2.2µF/150V	88µH

#### Notes

- All dimensions are in inches (mm)
- Weight: 0.01 lbs (3.75 g) approx.

- Tolerance: X.XX±0.01 (X.X±0.25)  
X.XXX±0.005 (X.XX±0.13)
- Pin Tolerance: ±0.002 (±0.05)

## X-ON Electronics

Largest Supplier of Electrical and Electronic Components

*Click to view similar products for [Isolated DC/DC Converters](#) category:*

*Click to view products by [XP Power](#) manufacturer:*

Other Similar products are found below :

[ESM6D044440C05AAQ](#) [FMD15.24G](#) [PSL486-7LR](#) [Q48T30020-NBB0](#) [JAHW100Y1](#) [SPB05C-12](#) [SQ24S15033-PS0S](#) [18952](#) [19-130041](#)  
[CE-1003](#) [CE-1004](#) [GQ2541-7R](#) [RDS180245](#) [MAU228](#) [J80-0041NL](#) [DFC15U48D15](#) [XGS-0512](#) [XGS-1205](#) [XGS-1212](#) [XGS-2412](#) [XGS-2415](#) [XKS-1215](#) [06322](#) [NCT1000N040R050B](#) [SPB05B-15](#) [SPB05C-15](#) [L-DA20](#) [DCG40-5G](#) [QME48T40033-PGB0](#) [XKS-2415](#) [XKS-2412](#)  
[XKS-1212](#) [XKS-1205](#) [XKS-0515](#) [XKS-0505](#) [XGS-2405](#) [XGS-1215](#) [XGS-0515](#) [PS9Z-6RM4](#) [73-551-5038I](#) [AK1601-9RT](#) [VI-N61-CM](#) [VI-R5022-EXWW](#) [PSC128-7iR](#) [RPS8-350ATX-XE](#) [DAS1004812](#) [PQA30-D24-S24-DH](#) [VI-M5F-CQ](#) [VI-LN2-EW](#) [VI-PJW01-CZY](#)