

## JCK Series



- 2:1 Input Range
- -40 °C to +100 °C Operating Temperature
- Single & Dual Outputs
- Remote On/Off
- High Efficiency – up to 93%
- 1600 VDC Isolation
- 3 Year Warranty

### Specification

#### Input

Input Voltage Range	<ul style="list-style-type: none"> <li>• 12 V (9-18 VDC)</li> <li>• 24 V (18-36 VDC)</li> <li>• 48 V (36-75 VDC)</li> </ul>
Input Current	<ul style="list-style-type: none"> <li>• See table</li> </ul>
Undervoltage Lockout	<ul style="list-style-type: none"> <li>• 12 V models: ON 8.6 V, OFF 7.9 V typical</li> <li>• 24 V models: ON 17.8 V, OFF 16 V typical</li> <li>• 48 V models: ON 33.5 V, OFF 30.5 V typical</li> </ul>
Input Surge	<ul style="list-style-type: none"> <li>• 12 V models 36 VDC for 100 ms</li> <li>• 24 V models 50 VDC for 100 ms</li> <li>• 48 V models 100 VDC for 100 ms</li> </ul>

#### Output

Output Voltage	<ul style="list-style-type: none"> <li>• See table</li> </ul>
Output Voltage Trim	<ul style="list-style-type: none"> <li>• ±10% max on single outputs</li> </ul>
Minimum Load	<ul style="list-style-type: none"> <li>• No minimum load required</li> </ul>
Line Regulation	<ul style="list-style-type: none"> <li>• ±0.5% max</li> </ul>
Load Regulation	<ul style="list-style-type: none"> <li>• Single output models: ±0.5% max</li> <li>• Dual output models: ±1% max balanced outputs</li> </ul>
Cross Regulation	<ul style="list-style-type: none"> <li>• ±5% for dual outputs (see note 2)</li> </ul>
Setpoint Accuracy	<ul style="list-style-type: none"> <li>• ±1% max</li> </ul>
Start Up Delay	<ul style="list-style-type: none"> <li>• &lt;20 ms</li> </ul>
Start Up Rise Time	<ul style="list-style-type: none"> <li>• &lt;5 ms</li> </ul>
Ripple & Noise	<ul style="list-style-type: none"> <li>• 75 mV pk-pk (see note 3)</li> </ul>
Transient Response	<ul style="list-style-type: none"> <li>• ±3% max deviation, recovery to within 1% in 250 μs for a 25% load change</li> </ul>
Temperature Coefficient	<ul style="list-style-type: none"> <li>• 0.02%/°C</li> </ul>
Overvoltage Protection	<ul style="list-style-type: none"> <li>• 3.3 V models: 3.9 V typical</li> <li>• 5 V models: 6.2 V typical</li> <li>• 12 V models: 15 V typical</li> <li>• 15 V models: 18 V typical</li> <li>• ±12 V models: ±15 V typical</li> <li>• ±15 V models: ±18 V typical</li> </ul>
Overload Protection	<ul style="list-style-type: none"> <li>• &gt;140% of full load at nominal input</li> </ul>
Short Circuit Protection	<ul style="list-style-type: none"> <li>• Trip &amp; restart (hiccup mode), auto recovery</li> </ul>
Remote On/Off	<ul style="list-style-type: none"> <li>• On = Logic High (&gt;3.0 V) or Open</li> <li>• Off = Logic Low (&lt;1.2 V) or short pin 2 to pin 6</li> </ul>
Capacitive Load	<ul style="list-style-type: none"> <li>• See table</li> </ul>

#### General

Efficiency	<ul style="list-style-type: none"> <li>• See table</li> </ul>
Isolation	<ul style="list-style-type: none"> <li>• 1600 VDC Input to Output</li> <li>• 1600 VDC Input to Case</li> <li>• 1600 VDC Output to Case</li> </ul>
Isolation Capacitance	<ul style="list-style-type: none"> <li>• 1200 pF typical</li> </ul>
Isolation Resistance	<ul style="list-style-type: none"> <li>• 10<sup>9</sup>Ω min</li> </ul>
Switching Frequency	<ul style="list-style-type: none"> <li>• 330 kHz typical</li> </ul>
Power Density	<ul style="list-style-type: none"> <li>• 25 W/in<sup>3</sup></li> </ul>
MTBF	<ul style="list-style-type: none"> <li>• &gt;680 kHrs minimum to MIL-HDBK-217F at 25 °C, GB</li> </ul>

#### Environmental

Operating Temperature	<ul style="list-style-type: none"> <li>• -40 °C to +100 °C, derate from 100% load at +70 °C to 0% load at +100 °C</li> </ul>
Case Temperature	<ul style="list-style-type: none"> <li>• +100 °C max</li> </ul>
Cooling	<ul style="list-style-type: none"> <li>• Convection-cooled</li> </ul>
Operating Humidity	<ul style="list-style-type: none"> <li>• Up to 95% RH, non-condensing</li> </ul>
Storage Temperature	<ul style="list-style-type: none"> <li>• -40 °C to +125 °C</li> </ul>

#### EMC

Emissions	<ul style="list-style-type: none"> <li>• EN55022, Class A conducted &amp; radiated with external components, see application note</li> </ul>
ESD Immunity	<ul style="list-style-type: none"> <li>• EN61000-4-2, 8 kV air, 6 kV contact, Perf Criteria A</li> </ul>
Radiated Immunity	<ul style="list-style-type: none"> <li>• EN61000-4-3 10 V/m, Perf Criteria A</li> </ul>
EFT/Burst	<ul style="list-style-type: none"> <li>• EN61000-4-4 level 3, Perf Criteria B*</li> </ul>
Surge	<ul style="list-style-type: none"> <li>• EN61000-4-5 level 2, Perf Criteria B*</li> </ul>
Conducted Immunity	<ul style="list-style-type: none"> <li>• EN61000-4-6 10 V/rms, Perf Criteria A</li> </ul>
Magnetic Field	<ul style="list-style-type: none"> <li>• EN61000-4-8 1 A/m, Perf Criteria A</li> </ul>

#### Safety

Safety Approvals	<ul style="list-style-type: none"> <li>• CE (Meets all applicable directives), UKCA (Meets all applicable legislation)</li> </ul>
------------------	---

\*External input capacitor required 220 μF/100 V.

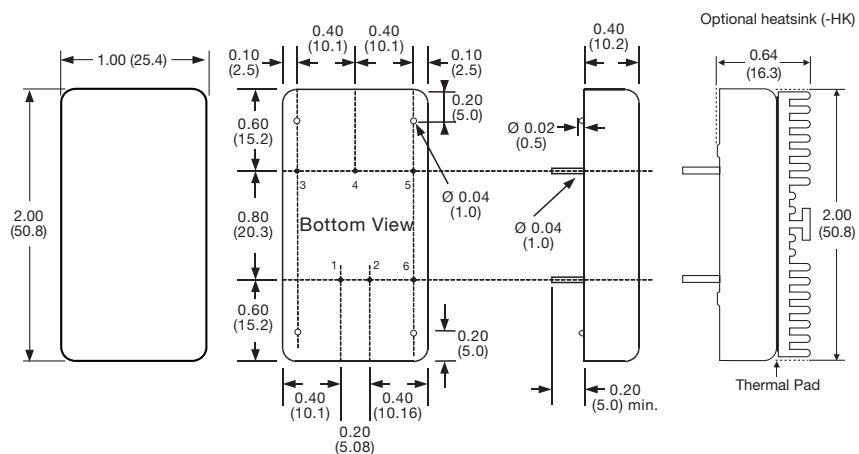
## Models and Ratings

Input Voltage	Output Voltage	Output Current	Input Current <sup>(1)</sup>		Maximum Capacitive Load	Efficiency	Model Number
			No Load	Full Load			
9-18 VDC	3.3 VDC	5.500 A	60 mA	1.74 A	10,000 µF	90%	JCK2012S3V3
	5.0 VDC	4.000 A	60 mA	1.87 A	6,800 µF	92%	JCK2012S05
	12.0 VDC	1.670 A	30 mA	1.92 A	1,000 µF	90%	JCK2012S12
	15.0 VDC	1.330 A	30 mA	1.92 A	680 µF	90%	JCK2012S15
	±12.0 VDC	±0.835 A	30 mA	1.94 A	±470 µF	89%	JCK2012D12
	±15.0 VDC	±0.665 A	30 mA	1.94 A	±330 µF	89%	JCK2012D15
18-36 VDC	3.3 VDC	5.500 A	35 mA	0.86 A	10,000 µF	91%	JCK2024S3V3
	5.0 VDC	4.000 A	35 mA	0.93 A	6,800 µF	93%	JCK2024S05
	12.0 VDC	1.670 A	25 mA	0.95 A	1,000 µF	91%	JCK2024S12
	15.0 VDC	1.330 A	25 mA	0.95 A	680 µF	91%	JCK2024S15
	±12.0 VDC	±0.835 A	30 mA	0.96 A	±470 µF	90%	JCK2024D12
	±15.0 VDC	±0.665 A	30 mA	0.96 A	±330 µF	90%	JCK2024D15
36-75 VDC	3.3 VDC	5.500 A	25 mA	0.43 A	10,000 µF	91%	JCK2048S3V3
	5.0 VDC	4.000 A	25 mA	0.46 A	6,800 µF	93%	JCK2048S05
	12.0 VDC	1.670 A	15 mA	0.47 A	1,000 µF	91%	JCK2048S12
	15.0 VDC	1.330 A	15 mA	0.47 A	680 µF	91%	JCK2048S15
	±12.0 VDC	±0.835 A	20 mA	0.48 A	±470 µF	90%	JCK2048D12
	±15.0 VDC	±0.665 A	20 mA	0.48 A	±330 µF	89%	JCK2048D15

### Notes

- Input current specified at nominal 12, 24 V or 48 V input.
- Cross regulation is ±5% when one output is at 100% and the other is varied between 25% and 100%.
- Measured with 20 MHz bandwidth and 1 µF ceramic capacitor across output rails.
- For heatsink option add '-HK' to the end of the part number.

## Mechanical Details



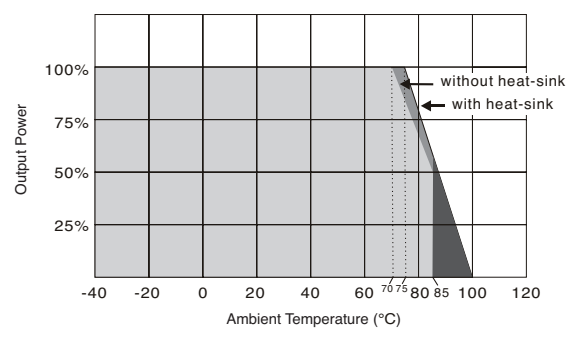
PIN CONNECTIONS		
Pin	Single	Dual
1	+Vin	+Vin
2	-Vin	-Vin
3	+Vout	+Vout
4	Trim	Com
5	-Vout	-Vout
6	Remote On/Off	Remote On/Off

### Notes

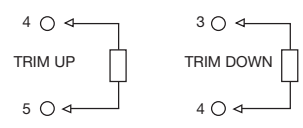
- All dimensions are in inches (mm).
- Weight: 0.07 lbs (30 g)
- Pin diameter: 0.04 ±0.002 (1.0 ±0.05)
- Pin pitch tolerance: ±0.014 (±0.35)
- Case tolerance: ±0.02 (±0.5)

## Application Notes

### Derating Curve

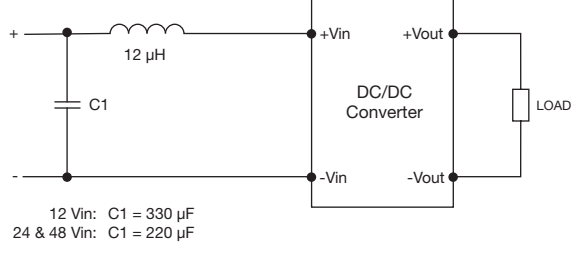


### External Output Trim



- For 3.3 V output:**  
Trim +10%, R = 10 k typical  
Trim - 10%, R = 15 k typical
- For 5 V output:**  
Trim +10%, R = 10 k typical  
Trim - 10%, R = 5 k typical
- For 12 V output:**  
Trim +10%, R = 22 k typical  
Trim - 10%, R = 5 k typical
- For 15 V output:**  
Trim +10%, R = 20 k typical  
Trim - 10%, R = 5 k typical

### Input Filter



### Remote On/Off Control

- Output On >3.0 VDC or open circuit
- Output Off <1.2 VDC or short circuit pins 2 & 6

## X-ON Electronics

Largest Supplier of Electrical and Electronic Components

*Click to view similar products for [Isolated DC/DC Converters](#) category:*

*Click to view products by [XP Power](#) manufacturer:*

Other Similar products are found below :

[ESM6D044440C05AAQ](#) [FMD15.24G](#) [PSL486-7LR](#) [Q48T30020-NBB0](#) [JAHW100Y1](#) [SPB05C-12](#) [SQ24S15033-PS0S](#) [18952](#) [19-130041](#)  
[CE-1003](#) [CE-1004](#) [GQ2541-7R](#) [RDS180245](#) [MAU228](#) [J80-0041NL](#) [DFC15U48D15](#) [XGS-0512](#) [XGS-1205](#) [XGS-1212](#) [XGS-2412](#) [XGS-2415](#) [XKS-1215](#) [06322](#) [NCT1000N040R050B](#) [SPB05B-15](#) [SPB05C-15](#) [L-DA20](#) [DCG40-5G](#) [QME48T40033-PGB0](#) [XKS-2415](#) [XKS-2412](#)  
[XKS-1212](#) [XKS-1205](#) [XKS-0515](#) [XKS-0505](#) [XGS-2405](#) [XGS-1215](#) [XGS-0515](#) [PS9Z-6RM4](#) [73-551-5038I](#) [AK1601-9RT](#) [VI-N61-CM](#) [VI-R5022-EXWW](#) [PSC128-7iR](#) [RPS8-350ATX-XE](#) [DAS1004812](#) [PQA30-D24-S24-DH](#) [VI-M5F-CQ](#) [VI-LN2-EW](#) [VI-PJW01-CZY](#)