

## JTK Series



- Very High Power Density
- Wide 4:1 Input Range
- Operating Temperature  $-40\text{ }^{\circ}\text{C}$  to  $+100\text{ }^{\circ}\text{C}$
- Single & Dual Outputs
- 1600 VDC Isolation
- UL Approved
- High Efficiency – up to 89%
- 3 Year Warranty

## Specification

## Input

Input Voltage Range	<ul style="list-style-type: none"> <li>• 24 V (9-36 VDC)</li> <li>• 48 V (18-75 VDC)</li> </ul>
Input Current	<ul style="list-style-type: none"> <li>• See table</li> </ul>
Input Filter	<ul style="list-style-type: none"> <li>• Pi network</li> </ul>
Input Reflected Ripple Current	<ul style="list-style-type: none"> <li>• JTK15: 20 mA pk-pk</li> <li>• JTK20: 30 mA pk-pk through 12 <math>\mu\text{H}</math> inductor and 47 <math>\mu\text{F}</math> capacitor, 5 Hz to 20 MHz</li> </ul>
Input Surge	<ul style="list-style-type: none"> <li>• 24 V models: 50 VDC for 100 ms</li> <li>• 48 V models: 100 VDC for 100 ms</li> </ul>

## Output

Output Voltage	<ul style="list-style-type: none"> <li>• See table</li> </ul>
Output Trim	<ul style="list-style-type: none"> <li>• <math>\pm 10\%</math> max on single output</li> </ul>
Minimum Load	<ul style="list-style-type: none"> <li>• No minimum load required</li> </ul>
Initial Set Accuracy	<ul style="list-style-type: none"> <li>• <math>\pm 1\%</math> max</li> </ul>
Start Up Delay	<ul style="list-style-type: none"> <li>• 20 ms typical</li> </ul>
Line Regulation	<ul style="list-style-type: none"> <li>• JTK15: <math>\pm 0.2\%</math> max single, <math>\pm 0.5\%</math> max dual</li> <li>• JTK20: <math>\pm 0.5\%</math> max</li> </ul>
Load Regulation	<ul style="list-style-type: none"> <li>• <math>\pm 0.5\%</math> max single, <math>\pm 1.0\%</math> max dual</li> </ul>
Cross Regulation	<ul style="list-style-type: none"> <li>• <math>\pm 5\%</math> on dual output models, (see note 2)</li> </ul>
Transient Response	<ul style="list-style-type: none"> <li>• <math>&lt; 3\%</math> max deviation, recovery to within 1% in 250 <math>\mu\text{s}</math> for a 25% load change</li> </ul>
Ripple & Noise	<ul style="list-style-type: none"> <li>• 100 mV pk-pk, 20 MHz bandwidth, (see note 3)</li> </ul>
Overload Protection	<ul style="list-style-type: none"> <li>• JTK15: 170% of full load typical, JTK20: 150% of full load typical</li> </ul>
Overvoltage Protection	<ul style="list-style-type: none"> <li>• 3.3 V models: 3.9 V typical</li> <li>• 5 V models: 6.2 V typical</li> <li>• 12 V models: 15 V typical</li> <li>• 15 V models: 18 V typical</li> <li>• <math>\pm 5\text{ V}</math> models: <math>\pm 6.2\text{ V}</math> typical</li> <li>• <math>\pm 12\text{ V}</math> models: <math>\pm 15\text{ V}</math> typical</li> <li>• <math>\pm 15\text{ V}</math> models: <math>\pm 18\text{ V}</math> typical</li> </ul>
Short Circuit Protection	<ul style="list-style-type: none"> <li>• Trip &amp; restart (hiccup) with auto recovery</li> </ul>
Maximum Capacitive Load	<ul style="list-style-type: none"> <li>• See table</li> </ul>
Temperature Coefficient	<ul style="list-style-type: none"> <li>• <math>\pm 0.02\%/^{\circ}\text{C}</math> max</li> </ul>
Remote On/Off	<ul style="list-style-type: none"> <li>• On <math>&gt; 3.0\text{ VDC}</math> or open circuit</li> <li>• Off <math>&lt; 1.2\text{ VDC}</math> or short circuit pins 2 &amp; 3</li> </ul>

## General

Efficiency	<ul style="list-style-type: none"> <li>• See table</li> </ul>
Isolation	<ul style="list-style-type: none"> <li>• 1600 VDC Input to Output</li> <li>• 1600 VDC Input to Case</li> <li>• 1600 VDC Output to Case</li> </ul>
Isolation Capacitance	<ul style="list-style-type: none"> <li>• JTK15: 1200 pF max</li> <li>• JTK20: 1000 pF max</li> </ul>
Switching Frequency	<ul style="list-style-type: none"> <li>• JTK15: 375 kHz typical</li> <li>• JTK20: 330 kHz typical</li> </ul>
Power Density	<ul style="list-style-type: none"> <li>• JTK15: 38.4 W/in<sup>3</sup>,</li> <li>• JTK20: 51.3 W/in<sup>3</sup></li> </ul>
MTBF	<ul style="list-style-type: none"> <li>• <math>&gt; 560\text{ Kh}</math>rs to MIL-STD-217F at 25 <math>^{\circ}\text{C}</math>, GB</li> </ul>

## Environmental

Operating Temperature	<ul style="list-style-type: none"> <li>• <math>-40\text{ }^{\circ}\text{C}</math> to <math>+100\text{ }^{\circ}\text{C}</math>, JTK15: derate from 100% load at <math>+65\text{ }^{\circ}\text{C}</math> to no load at <math>+100\text{ }^{\circ}\text{C}</math>, JTK20: derate from 100% load at <math>+55\text{ }^{\circ}\text{C}</math> to no load at <math>+100\text{ }^{\circ}\text{C}</math></li> </ul>
Case Temperature	<ul style="list-style-type: none"> <li>• <math>+105\text{ }^{\circ}\text{C}</math> max</li> </ul>
Storage Temperature	<ul style="list-style-type: none"> <li>• <math>-40\text{ }^{\circ}\text{C}</math> to <math>+125\text{ }^{\circ}\text{C}</math></li> </ul>
Humidity	<ul style="list-style-type: none"> <li>• Up to 90%, non-condensing</li> </ul>
Cooling	<ul style="list-style-type: none"> <li>• Natural convection</li> </ul>

## EMC

Emissions	<ul style="list-style-type: none"> <li>• EN55022, Level A conducted &amp; radiated with external components - see applications note</li> </ul>
ESD Immunity	<ul style="list-style-type: none"> <li>• EN61000-4-2, Level 2 Perf Criteria A</li> </ul>
Radiated Immunity	<ul style="list-style-type: none"> <li>• EN61000-4-3, 3 V/m Perf Criteria A</li> </ul>
EFT/Burst	<ul style="list-style-type: none"> <li>• EN61000-4-4, Level 3 Perf Criteria A*</li> </ul>
Conducted Immunity	<ul style="list-style-type: none"> <li>• EN61000-4-6, 3 V rms Perf Criteria A</li> </ul>
Magnetic Fields	<ul style="list-style-type: none"> <li>• EN61000-4-8, 1 A/m Perf Criteria A</li> </ul>

## Safety

Safety Approvals	<ul style="list-style-type: none"> <li>• UL60950-1, CAN/CSA C22.2 No.60950-1, UL62368-1</li> </ul>
------------------	--

\*External input capacitor required 220  $\mu\text{F}$  / 100 V.

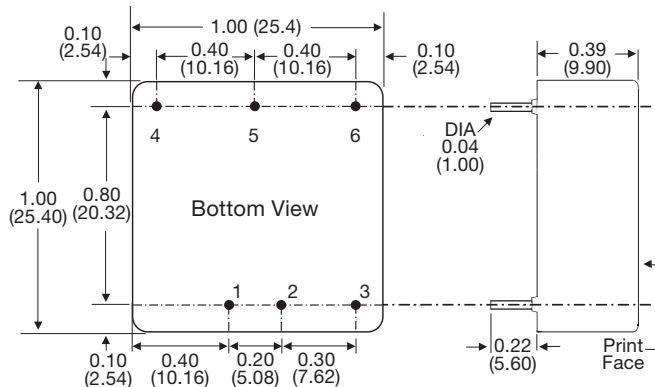
## Models and Ratings

Input Voltage	Output Voltage	Output Current	Input Current <sup>(1)</sup>		Maximum Capacitive Load	Efficiency	Model Number
			No Load	Full Load			
9-36 V	3.3 V	4.000 A	15 mA	647 mA	1000 µF	86%	JTK1524S3V3
	5.0 V	3.000 A	15 mA	727 mA	1000 µF	87%	JTK1524S05
	12.0 V	1.300 A	15 mA	747 mA	330 µF	88%	JTK1524S12
	15.0 V	1.000 A	15 mA	710 mA	220 µF	89%	JTK1524S15
	±5.0 V	±1.500 A	15 mA	744 mA	±470 µF	85%	JTK1524D05
	±12.0 V	±0.625 A	15 mA	720 mA	±220 µF	88%	JTK1524D12
18-75 V	3.3 V	4.000 A	10 mA	331 mA	1000 µF	84%	JTK1548S3V3
	5.0 V	3.000 A	10 mA	368 mA	1000 µF	86%	JTK1548S05
	12.0 V	1.300 A	10 mA	378 mA	330 µF	87%	JTK1548S12
	15.0 V	1.000 A	10 mA	360 mA	220 µF	88%	JTK1548S15
	±5.0 V	±1.500 A	10 mA	377 mA	±470 µF	84%	JTK1548D05
	±12.0 V	±0.625 A	10 mA	363 mA	±220 µF	87%	JTK1548D12
9-36 V	3.3 V	4.500 A	50 mA	720 mA	10000 µF	86%	JTK2024S3V3
	5.0 V	4.000 A	50 mA	936 mA	5000 µF	89%	JTK2024S05
	12.0 V	1.670 A	22 mA	936 mA	850 µF	89%	JTK2024S12
	15.0 V	1.330 A	22 mA	936 mA	700 µF	89%	JTK2024S15
	±12.0 V	±0.833 A	25 mA	936 mA	±470 µF	89%	JTK2024D12
	±15.0 V	±0.667 A	25 mA	936 mA	±330 µF	89%	JTK2024D15
18-75 V	3.3 V	4.500 A	30 mA	309 mA	10000 µF	86%	JTK2048S3V3
	5.0 V	4.000 A	30 mA	468 mA	5000 µF	89%	JTK2048S05
	12.0 V	1.670 A	15 mA	468 mA	850 µF	89%	JTK2048S12
	15.0 V	1.330 A	15 mA	468 mA	700 µF	90%	JTK2048S15
	±12.0 V	±0.833 A	15 mA	468 mA	±470 µF	89%	JTK2048D12
	±15.0 V	±0.667 A	15 mA	468 mA	±330 µF	89%	JTK2048D15

### Notes

1. Input current measured at nominal 24 V and 48 V input.
2. When one output is set to 100% load, and the other varies between 25% and 100% load.
3. Measured with 1 µF ceramic capacitor and 10 µF tantalum capacitor across output rails.

## Mechanical Details



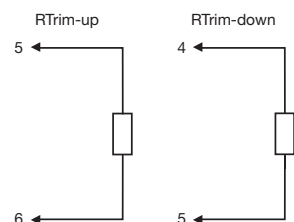
Pin	Pin Connections	
	Single	Dual
1	+Vin	+Vin
2	-Vin	-Vin
3	Remote On/Off	Remote On/Off
4	+Vout	+Vout
5	Trim	Com
6	-Vout	-Vout

### Notes

1. All dimensions are in inches (mm)
2. Weight: 0.04 lbs (20 g) approx.
3. Pin diameter: 0.04 ±0.002 (1.0 ±0.05)
4. Pin pitch tolerance: ±0.014 (±0.35)
5. Case tolerance: ±0.02 (±0.5)

## Application Notes

### Output Trim

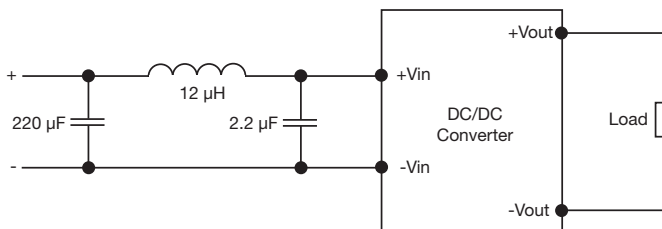


Model Number	Trim Resistor Values	
	Trim up 10%	Trim down 10%
JTK - S3V3	8 k	12 k
JTK - S05	10 k	5 k
JTK - S12	20 k	7 k
JTK - S15	20 k	6 k

Approximate values.

Output can be externally trimmed by using this method. (Single output models only). For variable trimming, use 100 kΩ potentiometer. Contact sales for details.

### Input Filter



## X-ON Electronics

Largest Supplier of Electrical and Electronic Components

*Click to view similar products for [Isolated DC/DC Converters](#) category:*

*Click to view products by [XP Power](#) manufacturer:*

Other Similar products are found below :

[ESM6D044440C05AAQ](#) [FMD15.24G](#) [PSL486-7LR](#) [Q48T30020-NBB0](#) [JAHW100Y1](#) [SPB05C-12](#) [SQ24S15033-PS0S](#) [18952](#) [19-130041](#)  
[CE-1003](#) [CE-1004](#) [GQ2541-7R](#) [RDS180245](#) [MAU228](#) [J80-0041NL](#) [DFC15U48D15](#) [XGS-0512](#) [XGS-1205](#) [XGS-1212](#) [XGS-2412](#) [XGS-2415](#) [XKS-1215](#) [06322](#) [NCT1000N040R050B](#) [SPB05B-15](#) [SPB05C-15](#) [L-DA20](#) [DCG40-5G](#) [QME48T40033-PGB0](#) [XKS-2415](#) [XKS-2412](#)  
[XKS-1212](#) [XKS-1205](#) [XKS-0515](#) [XKS-0505](#) [XGS-2405](#) [XGS-1215](#) [XGS-0515](#) [PS9Z-6RM4](#) [73-551-5038I](#) [AK1601-9RT](#) [VI-N61-CM](#) [VI-R5022-EXWW](#) [PSC128-7iR](#) [RPS8-350ATX-XE](#) [DAS1004812](#) [PQA30-D24-S24-DH](#) [VI-M5F-CQ](#) [VI-LN2-EW](#) [VI-PJW01-CZY](#)