

## LDU05/07/14 Series



- Constant Current Output
- LED Drive Current up to 1000 mA
- LED Strings from 2 V to 14 V
- PWM & Analog Dimming Control
- High Efficiency – up to 93%
- Open or Short Circuit LED Protection
- 3 Year Warranty

## Specification

---

### Input

Input Voltage	• 7-16 VDC
Input Filter	• Capacitor
Input Surge	• 20 VDC for 0.5 s

### Output

Output Voltage	• See tables ( $V_{in}$ must be at least 2 V greater than $V_{out}$ )
Output Current	• See tables
Output Current Trim	• 25-100%
Output Current Accuracy	• See tables
Ripple & Noise	• See tables, measured with 20 MHz bandwidth
Short Circuit Protection	• Current is limited to the rated output
Temperature Coefficient	• $\pm 0.03\%/^{\circ}\text{C}$ max
Remote On/Off	• On = 0.3-1.25 V or open circuit Off = $\leq 0.15$ V (applied to control pin) Quiescent input current is 25 $\mu\text{A}$ max,
Remote On/Off Signal Current	• 1 mA max

### Dimming

<b>PWM</b>	
Output Current Range	• 25% to 100%
Operating Frequency	• 1 kHz max
On Time	• 200 ns min
Off Time	• 200 ns min
Amplitude	• 1.25 V max

#### DC Voltage Control

Output Current Range	• 25% to 100%
Control Input	• 0.3 to 1.25 V max

#### Variable Resistor

Output Current Range	• 25% to 100%
----------------------	---------------

### General

Efficiency	• See tables
Switching Frequency	• LDU05: 60-300 kHz variable LDU07: 120-350 kHz variable LDU14: 90-400 kHz variable
MTBF	• $> 3.3$ Mhrs to MIL-HDBK-217F at 25 $^{\circ}\text{C}$ , GB

### Environmental

Operating Temperature	• -40 $^{\circ}\text{C}$ to +85 $^{\circ}\text{C}$ except LDU14 1000 mA unit: -40 $^{\circ}\text{C}$ to +70 $^{\circ}\text{C}$ ,
Storage Temperature	• -40 $^{\circ}\text{C}$ to +125 $^{\circ}\text{C}$
Humidity	• Up to 95%, non-condensing
Thermal Impedance	• 35 $^{\circ}\text{C}/\text{W}$ model dependant

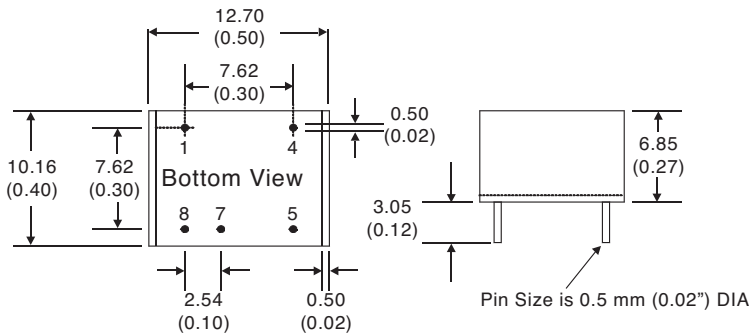
### EMC

Emissions	• EN55022 class B conducted & radiated with external components - see application notes
ESD Immunity	• EN61000-4-2, level 2 Perf Criteria A
Radiated Immunity	• EN61000-4-3, level 2 Perf Criteria A
EFT/Burst	• EN61000-4-4, level 2 Perf Criteria A
Surge	• EN61000-4-5, level 2 Perf Criteria A
Conducted Immunity	• EN61000-4-6, level 2 Perf Criteria A

## With Dimming Control

Output Power	Input Voltage Range	Output Voltage	Output Ripple & Noise	Output Current	Output Current Accuracy	Efficiency	Model Number
4.2 W	7-16 V	2-14 V	120 mV	300 mA	±5%	93%	LDU0516S300
4.9 W	7-16 V	2-14 V	150 mV	350 mA	±6%	93%	LDU0516S350
7.0 W	7-16 V	2-14 V	200 mV	500 mA	±7%	93%	LDU0716S500
8.4 W	7-16 V	2-14 V	200 mV	600 mA	±7%	93%	LDU1416S600
9.8 W	7-16 V	2-14 V	250 mV	700 mA	±7%	93%	LDU1416S700
14.0 W	7-16 V	2-14 V	250 mV	1000 mA	±8%	93%	LDU1416S1000

## Mechanical Details



Pin Connections		
1	+V Input	+DC supply
4	+V Output	LED anode connection
5	-V Output	LED cathode connection
7	V Adj	Dimming Control
8	-V Input	-DC supply

### Notes

- All dimensions are in inches (mm)
- Weight: 0.003 lbs (1.8 g) approx.
- Pin diameter: 0.02±0.002 (0.5±0.05)
- Pin pitch tolerance: ±0.014 (±0.35)
- Case tolerance: ±0.02 (±0.5)

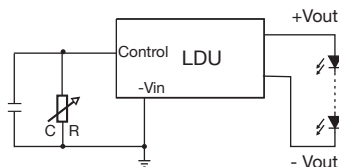
## Application Notes

### Output Current Adjustment by Variable Resistor

By connecting a variable resistor between Control and GND, simple dimming can be achieved. Capacitor C is optional for HF noise rejection, recommended value is 0.22 µF.

The output current can be determined using the equation:  $I_{out} = \frac{\text{Rated Max } I \times R}{(R + 200 \text{ k})}$

Where the value of R is between 0 and 2 MΩ, the maximum adjustment range of output current is 25% to 90% (For  $V_{in} - V_{out} < 20 \text{ VDC}$ )



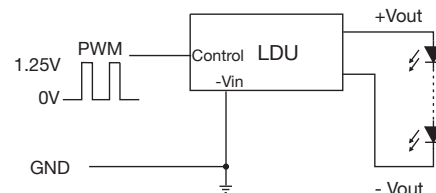
Shorting out the Control pin to GND will turn the output off.

### Output Current Adjustment by PWM

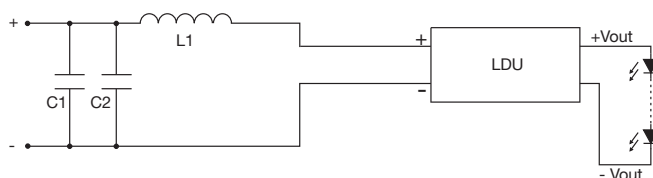
A Pulse Width Modulated (PWM) signal with duty cycle DPWM can be applied to the control pin.

The output current can be determined using the equation:  $I_{out} = \text{Rated Max } I \times D_{pwm}$

$D_{pwm}$  = PWM duty cycle



### Input Filter to meet Class B Conducted Emissions



C1	10 µF
C2	4.7 µF
L1	68 µH

## X-ON Electronics

Largest Supplier of Electrical and Electronic Components

*Click to view similar products for [LED Power Supplies](#) category:*

*Click to view products by [XP Power](#) manufacturer:*

Other Similar products are found below :

[ESS015W-1000-12](#) [PDA-WIFI](#) [PIFC-K250F](#) [PITB-K222A](#) [ALD-514012PJ134](#) [LB240S24KH](#) [LMH020-SPLC-0000-0000001](#) [79534](#) [79535](#)  
[EUG-200S210DT](#) [ESS030W-1050-21](#) [ESS030W-0900-32](#) [BPOXL 4-12-035](#) [ESS010W-0350-24](#) [ESS010W-0200-42](#) [ESM060W-1400-42](#)  
[PDA080B-1A0G](#) [ESS010W-0500-12](#) [PDA150B-S1A5G](#) [SLM140W-1.05-130-ZA](#) [ESS015W-0700-18](#) [EUD-150S350DVA](#) [LWA320-C420-](#)  
[ARK-B](#) [HVG-240-48AB](#) [HVG-320-36AB](#) [HVG-320-54AB](#) [ELG-240-C1400AB](#) [EUK-150S105DV](#) [BXCS-12Z-N2P-B1-A](#) [BXPR-WN-01-A](#)  
[LN1224CV](#) [BXCS-12D-N2P-01-A](#) [BXCS-12W-N2P-01-A](#) [HBG-160-24AB](#) [980100001200394](#) [980060001200376](#) [LC 14W 250-350MA](#)  
[FLEXC R ADV2](#) [LC 24W 500-600MA FLEXC R ADV2](#) [LC 36W 850-900MA FLEXC R ADV2](#) [LC 50W 200-350ML 170V FLEXC LP](#)  
[SNC4](#) [LC 25W 200-350ML 70V FLEXC LP SNC4](#) [LC 35W 200-350ML 121V FLEXC LP SNC4](#) [LCBI 10W 350MA PHASE-CUT/1-10V LP](#)  
[LC 13W 300MA FIXC C SNC](#) [LC 10W 250MA FIXC SC SNC2](#) [LC 35W 800MA FIXC SR ADV2](#) [LC 38W 900MA FIXC SR ADV2](#) [LC](#)  
[34W 800MA FIXC SC ADV2](#) [LC 44W 1050MA FIXC SC ADV2](#) [LC 38W 900MA 42V FIXC SRL ADV2](#)