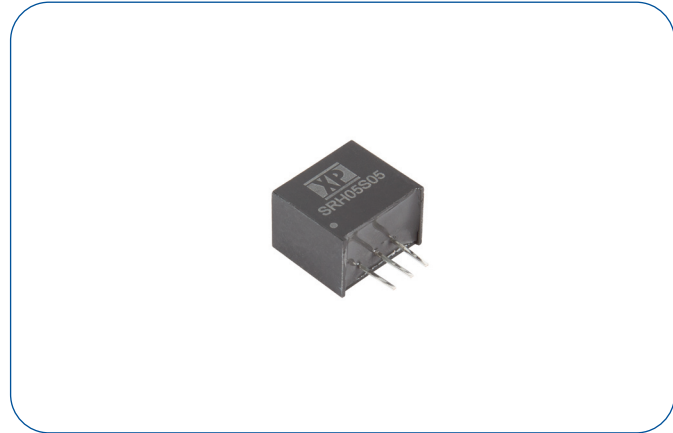


0.5 Amp

- 3 Pin Switching Regulator
- SIP Package
- Ultra Wide Input Range to 72 V
- -40 °C to +85 °C Operation
- Full Load to 60 °C Ambient
- Class B Conducted & Radiated Emissions
- MTBF >4.5 MHrs
- 3 Year Warranty



The SRH05 series of switching regulators provides a convenient cost effective solution to non-isolated DC-DC regulated voltage conversion applications. Operating from a wide DC input the SRH05 will step down to voltages from 3.3V to 15V DC. Features include continuous short circuit protection, high efficiency and an industrial operating temperature range.

Dimensions:

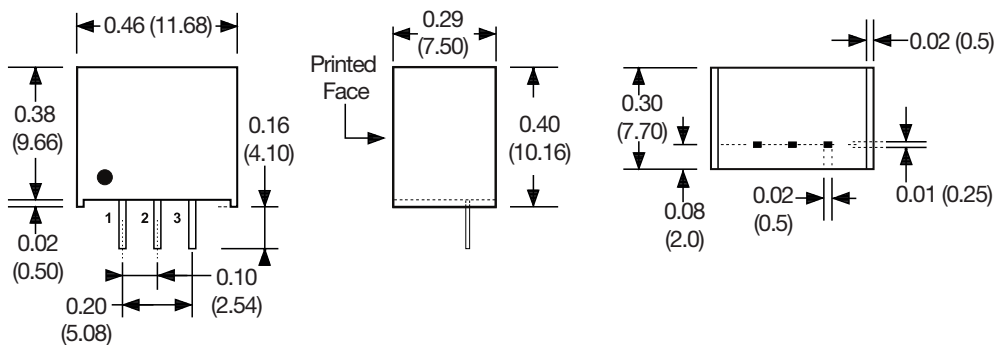
SRH05:

0.46 x 0.29 x 0.4" (11.68 x 7.5 x 10.16 mm)

Models & Ratings

Input Voltage	Output Voltage	Output Current	Input Current			Efficiency		Max capacitive load	Model Number
			No Load	Full Load, min Vin	Full Load, max Vin	min Vin	max Vin		
9-72 V	3.3V	500 mA	3 mA	225 mA	30 mA	82%	75%	100 µF	SRH05S3V3
9-72 V	5.0V	500 mA	3 mA	315 mA	45 mA	88%	80%	100 µF	SRH05S05
9-72 V	6.5V	500 mA	3 mA	395 mA	55 mA	91%	83%	100 µF	SRH05S6V5
14-72 V	7.2V	500 mA	3 mA	285 mA	60 mA	91%	84%	100 µF	SRH05S7V2
14-72 V	9.0V	500 mA	3 mA	350 mA	75 mA	92%	86%	100 µF	SRH05S09
17-72 V	12.0V	500 mA	3 mA	375 mA	95 mA	94%	89%	100 µF	SRH05S12
21-72 V	15.0V	400 mA	3 mA	300 mA	95 mA	95%	89%	100 µF	SRH05S15

Mechanical Details



Pin Connections	
Pin	Single
1	+Vin
2	Ground
3	+Vout

Notes

1. All dimensions are in inches (mm)
2. Weight: 0.004 lbs (2.1 g) approx.
3. Pin diameter: 0.02±0.002 (0.5±0.05)
4. Pin pitch tolerance: ±0.02 (±0.5)
5. Case tolerance: ±0.02 (±0.5)

Input

Characteristic	Minimum	Typical	Maximum	Units	Notes & Conditions
Input Voltage Range	9		72	VDC	Model dependant. See Models and Ratings table
Input Filter	Capacitor				
Input Reflected Ripple			35	mA pk-pk	Through 12 μ H inductor and 47 μ F capacitor
Input Surge			75	VDC for 100 ms	

Output

Characteristic	Minimum	Typical	Maximum	Units	Notes & Conditions
Output Voltage	3.3		15	VDC	See Models and Ratings table
Initial Set Accuracy			3	%	At full load
Minimum Load	10			mA	Minimum load required to meet specification. Operation at no load will not cause damage.
Line Regulation			1.0	%	
Load Regulation			0.6	%	From 10% to full load
Transient Response			\pm 3	%	For 25% load change
Ripple & Noise			75	mV pk-pk	20 MHz bandwidth
Short Circuit Protection					Continuous, with auto recovery
Maximum Capacitive Load					See Models and Ratings table
Temperature Coefficient			0.02	%/ $^{\circ}$ C	

General

Characteristic	Minimum	Typical	Maximum	Units	Notes & Conditions
Efficiency		92		%	See models and ratings table
Isolation: Input to Output	0			VDC	Non isolated
Switching Frequency	120		800	kHz	See application notes
Mean Time Between Failure	4.5			MHrs	MIL-HDBK-217F, +25 $^{\circ}$ C GB
Weight		0.004 (2.1)		lb (g)	
Soldering temp			260	$^{\circ}$ C	Waveflow. 0.05" (1.5mm) from case, 10 seconds max.
Case material	Non-conductive black plastic UL94V-0 rated				
Pin material	Solder coated C5191R-H				
Potting material	Silicon UL94V-0 rated				

Environmental

Characteristic	Minimum	Typical	Maximum	Units	Notes & Conditions
Operating Temperature	-40		+85	$^{\circ}$ C	Derate from 100% load at +60 $^{\circ}$ C to 40% at +85 $^{\circ}$ C
Storage Temperature	-40		+125	$^{\circ}$ C	
Case Temperature			+100	$^{\circ}$ C	
Humidity			95	%RH	Non-condensing
Cooling					Natural convection

EMC: Emissions

Phenomenon	Standard	Test Level	Notes & Conditions
Conducted	EN55032	Class B	See Application Note
Radiated	EN55032	Class B	See Application Note

EMC: Immunity

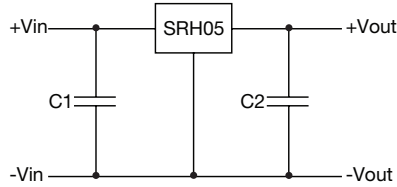
Phenomenon	Standard	Test Level	Criteria	Notes & Conditions
ESD Immunity	EN61000-4-2	\pm 6 kV/ \pm 8 kV	A	Contact discharge/Air discharge
Radiated Immunity	EN61000-4-3	10 Vrms	A	
EFT/Burst	EN61000-4-4	\pm 2.0 kV	A	See Application Note
Surges	EN61000-4-5	\pm 1.0 kV	A	See Application Note
Conducted Immunity	EN61000-4-6	10 V rms	A	
Magnetic Fields	EN61000-4-8	1 A/m	A	

Safety Approvals

Agency	Standard	Test Level	Notes & Conditions
CE	Meets all applicable directives		
UKCA	Meets all applicable legislation		

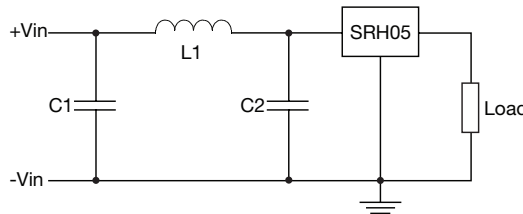
Application Note

Standard Application



C1 = 3.3 μ F/100 V required if input voltage is above 50 VDC
 C2 = 100 μ F (optional) to improve transient response

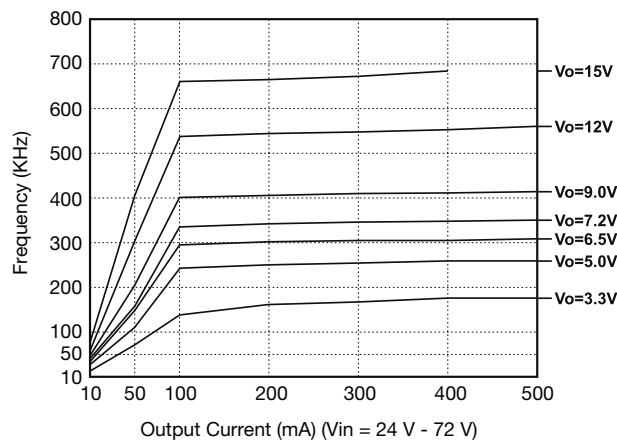
EMI & Surge/EFT Filter



C1 = 220 μ F/100 V
 L1 = 12 μ H
 C2 = 220 μ F/100 V

C1, C2 and L1 should be placed as close to the SRH05 as possible

Switching Frequency vs Load



X-ON Electronics

Largest Supplier of Electrical and Electronic Components

Click to view similar products for [Non-Isolated DC/DC Converters](#) category:

Click to view products by [XP Power](#) manufacturer:

Other Similar products are found below :

[PSR152.5-7IR](#) [APTH003A0X-SRZ](#) [SPM1004-3V3C](#) [R-785.0-05](#) [10E24-P15-10PPM](#) [1E24-P4-25PPM-SHV-5KV](#) [PROPOWER-3.3V](#)
[MYGTM01210BZN](#) [40C24-N250-I5-H](#) [40A24-P30-E](#) [3V12-P0.8](#) [10C24-N250-I10-AQ-DA](#) [4AA24-P20-M-H](#) [3V12-N0.8](#) [3V24-P1](#) [3V24-](#)
[N1](#) [BMR4672010/001](#) [BMR4652010/001](#) [6AA24-P30-I5-M](#) [6AA24-N30-I5-M](#) [BM2P101X-Z](#) [35A24-P30](#) [2.5M24-P1](#) [PTV03010WAD](#)
[PTV05020WAH](#) [PTV12010LAH](#) [PTV12020WAD](#) [R-7212D](#) [R-7212P](#) [R-78AA15-0.5SMD](#) [R-78AA5.0-1.0SMD](#) [30A24-N15-E](#) [10A12-P4-](#)
[M](#) [10C24-N250-I5](#) [10C24-P125](#) [10C24-P250-I5](#) [6A24-P20-I10-F-M-25PPM](#) [1A24-P30-F-M-C](#) [TSR 1-24150SM](#) [1/2AA24-N30-I10](#) [1C24-](#)
[N125](#) [12C24-N250](#) [V7806-1500](#) [PTV12020LAH](#) [PTV05010WAH](#) [PTN04050CAZT](#) [PTH12020WAD](#) [PTH12020LAS](#) [PTH05050YAH](#)
[PTH05T210WAH](#)