

NOTES:

1:MATERIAL

1-1: TITANIUM COPPER THICKNE=0.10MM

2:SPECIFICATIONS

2-1: RATED CURRENT: 1.0A

2-2: VOLTAGE RATING: 1.5V

2-3: CONTACT RESISTANCE: 80mΩ/MAX

2-4: WELDING THRUST: ≥3KG

2-5: OPERATING TEMPERATURE: -40°C~+85°C

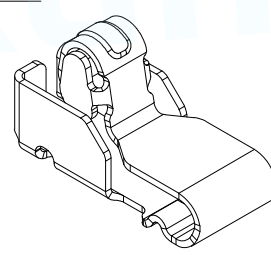
3:DURABILITY: 1500 CYCLES

4:SALT SPRAY TIME: 24H

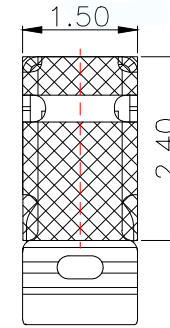
5:ELECTROPLATE: THE NICKEL-PLATED SUBSTRATE IS 50u" MIN

6:REQUIREMENTS

6-1:TERMINAL TO EAT FULL TIN,NOTPEELING,
WELDING OBVIOUS COLOR AND OTHER ADVERSE
6-2:ROHS、REACH、HF HALOGER ADVERSE OF DOMESTIC
AND INTERNATIONAL ENVIRONMNTAL REQUIREMENTS

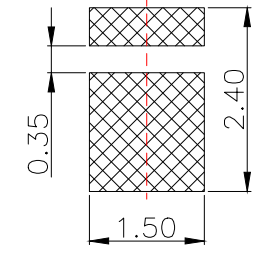


3D View



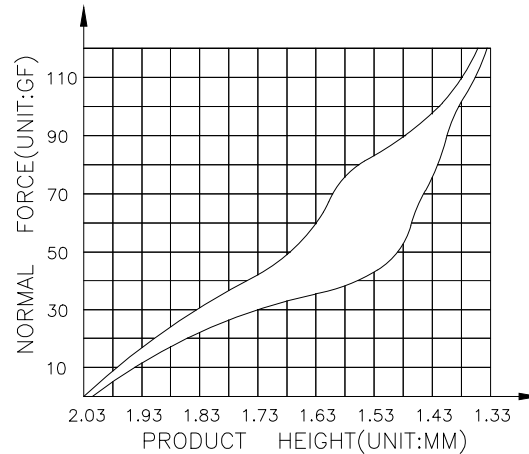
RECOMMENDED PCB LAYOUT

TOLERANCE:±0.05MM
(FOR REFERENCE ONLY)



METAL MASK T=0.08

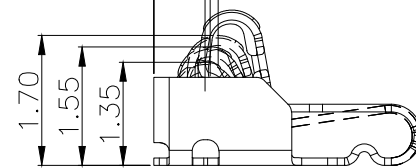
TOLERANCE:±0.05MM
(FOR REFERENCE ONLY)



0.84(Min.Working Position)

0.73(Working Position)

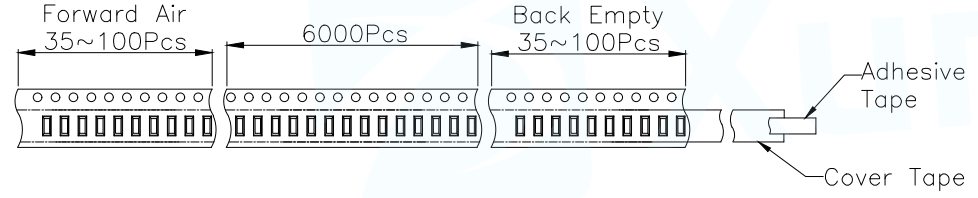
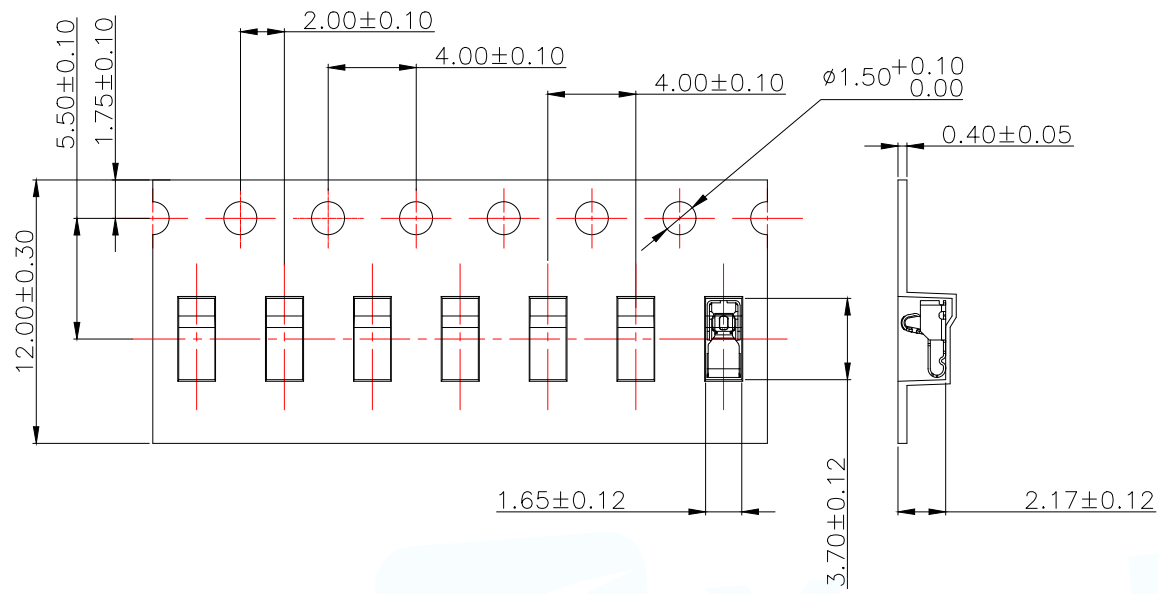
0.67(Max.Working Position)



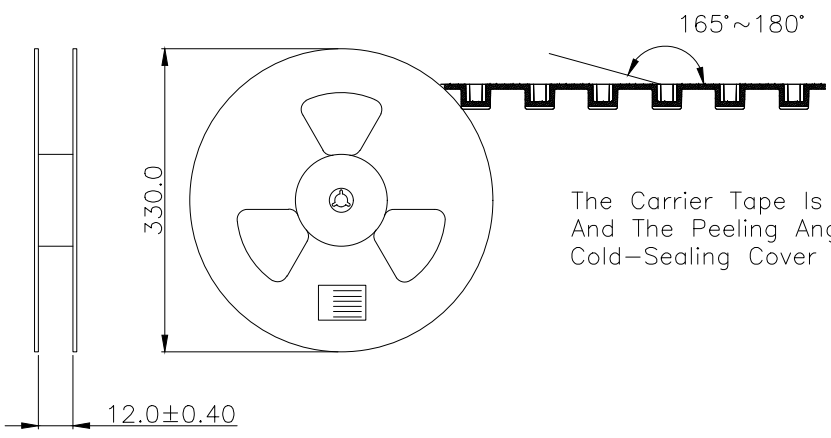
(For Reference Only)
Stated At Compression

| | | | |
|---------------------------------------|------------|---|---------------|
| MANUFACTURE DWG | | 东莞市讯普电子科技有限公司 DongGuan XunPu Electronics Co.,Ltd | |
| UNLESS OTHERWISE SPECIFIED TOLERANCES | | TITLE: 天线弹片 L3.50*W1.50*H2.03 | |
| | | PAR | ASP-D2001-B01 |
| DECIMALS: | ANGLES: | DWN | |
| X. ±0.30 | X. ° ±0.20 | CHKD | |
| .X ±0.20 | .X ° ±0.10 | APVD | |
| .XX ±0.15 | .XX ° ±0.5 | SCALE N:A | UNIT:MM |
| | | SIZE:A4 | SHEET:1F1 |
| | | CUSTOMER COPY | REV:A |

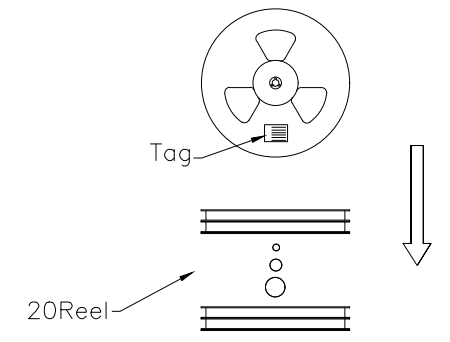
| | | | |
|------|--------------|------|---------|
| 12 | 13 | 14 | 15 |
| MAPX | MODIFICATION | DATE | APPROVE |
| | | | |



Customer To Use Direction → Pull Out Direction (出料方向) →

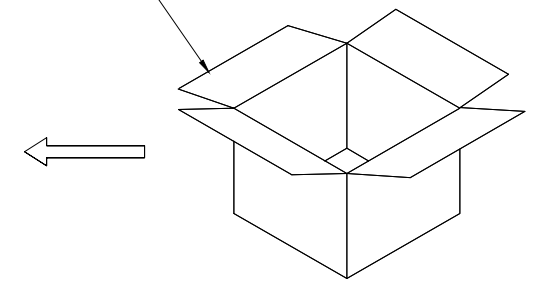
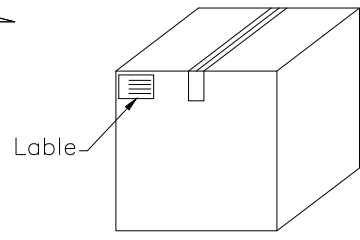


The Carrier Tape Is Cold-Sealed And The Peeling Angle Of The Cold-Sealing Cover Tape Is 165°~180°.



Carton Size 290*330*4 K3K

Carton Size 345*345*360 K=K



| | | | |
|---------------------------------------|------------|---|---------------|
| MANUFACTURE DWG | | 东莞市讯普电子科技有限公司 DongGuan XunPu Electronics Co.,Ltd | |
| UNLESS OTHERWISE SPECIFIED TOLERANCES | | TITLE: 天线弹片 L3.50*W1.50*H2.03 | |
| | | PAR | ASP-D2001-B01 |
| DECIMALS: | | DWN | |
| ANGLES: | | CHKD | |
| X. ±0.30 | X. ° ±0.20 | APVD | |
| .X ±0.20 | .X ° ±0.10 | SCALE N:A | UNIT:MM |
| .XX ±0.15 | .XX ° ±0.5 | SIZE:A4 | SHEET:1F1 |
| CUSTOMER COPY | | | REV:A |



X-ON Electronics

Largest Supplier of Electrical and Electronic Components

Click to view similar products for [Circuit Board Hardware - PCB category](#):

Click to view products by [XUNPU manufacturer](#):

Other Similar products are found below :

[8919-0-00-15-00-00-03-0](#) [5970-1-15-01-32-14-04-0](#) [MKU 1 BLACK](#) [MLN 150/1 BLACK](#) [8579-1-15-15-11-27-10-0](#) [PRUEF 1 RED](#) [PRUEF 2 RED](#) [PW1616](#) [MPS 1 BLACK](#) [1548-103](#) [2317-2-00-50-00-00-07-0](#) [2506-2-00-50-00-00-07-0](#) [SCREWCLAMP EASY2](#) [SCREWCLAMPEASY750GEO](#) [9873-0-15-80-02-80-10-0](#) [2104-2-01-80-00-00-07-0](#) [PG-9](#) [2308-4-00-44-00-00-07-0](#) [2314-2-01-50-00-00-07-0](#) [2352-3-01-50-00-00-07-0](#) [2506-3-00-50-00-00-07-0](#) [251-103](#) [3330-1-00-15-00-00-03-0](#) [430-107](#) [TO-100-030](#) [TO-16-030E](#) [TO-203-040E](#) [TO-24-100](#) [TO-64-030](#) [5062-0-00-21-00-00-33-0](#) [5108](#) [325-102](#) [WLPL-141](#) [Z4.102.1680.0](#) [5119](#) [0153-4-15-80-30-27-04-0](#) [0252-0-15-01-32-27-10-0](#) [0253-0-15-15-30-27-10-0](#) [0255-0-15-01-30-27-04-0](#) [0290-0-00-15-00-00-03-0](#) [0309-2-15-80-47-27-10-0](#) [02-41](#) [0405-0-15-80-34-27-04-0](#) [0569-0-15-15-11-27-10-0](#) [0579-0-15-01-11-27-10-0](#) [0489-0-15-01-11-27-04-0](#) [0489-2-15-15-11-27-04-0](#) [0553-1-15-01-11-27-10-0](#) [0553-2-15-80-11-84-10-0](#) [0554-0-15-15-11-27-10-0](#)