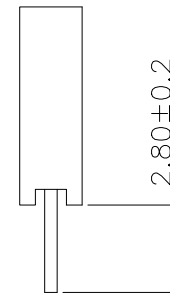
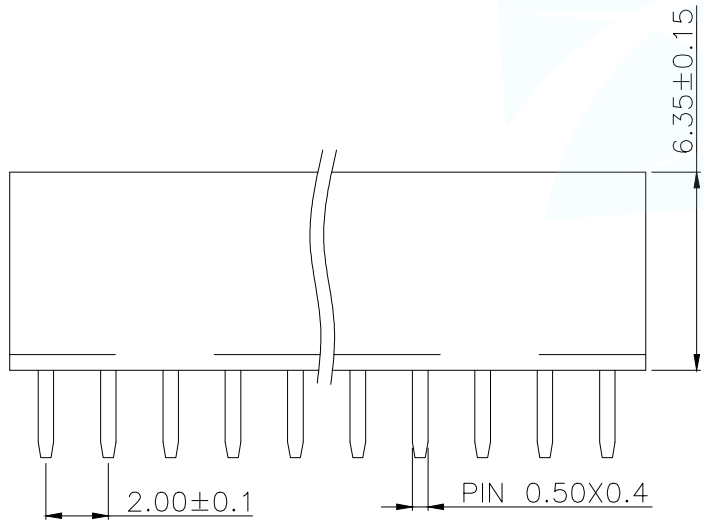


### SPECIFICATIONS

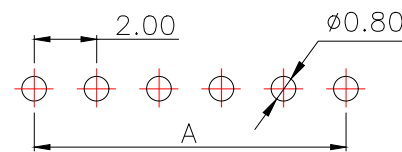
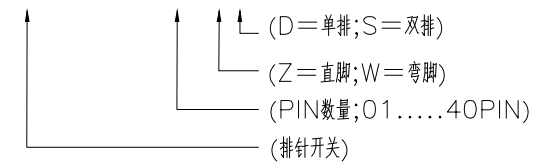
Current Rating: 1.5 Amps  
 Insulation Resistance: 1000M $\Omega$  Min  
 Contact Resistance: 20m $\Omega$  Max  
 Withstanding Voltage: AC 500V  
 Operation Temperature: -40°to+105°  
 Contact Material: Brass  
 Standard: PA6T  
 Insulator Material: Polyester(UL 94V-0)  
 Contact Plating: Gold Flash  
 Max.Processing Temp: 240°C for30-60seconds  
 (260°C for 5 seconds)

P/N	PIN	DIM.A	DIM.B
FH2.0-09-01PZD	1	0.00	2.00
FH2.0-09-02PZD	2	2.00	4.00
FH2.0-09-03PZD	3	4.00	6.00
FH2.0-09-04PZD	4	6.00	8.00
FH2.0-09-05PZD	5	8.00	10.00
FH2.0-09-06PZD	6	10.00	12.00
FH2.0-09-07PZD	7	12.00	14.00
FH2.0-09-08PZD	8	14.00	16.00
FH2.0-09-09PZD	9	16.00	18.00
.....	.....	.....	.....
FH2.0-09-40PZD	40	(PIN-1)x2.0	(PIN)x2.0



### PART NUMBER DESCRIPTION:

FH2.0-09-NPZD



RECOMMEND P.C.B LAYOUT  
 PCB TOLERANCE:±0.05 (TOP VIEW)

MANUFACTURE DWG		东莞市讯普电子科技有限公司 DongGuan XunPu Electronics Co.,Ltd	
UNLESS OTHERWISE SPECIFIED TOLERANCES			TITLE:2.0FH H6.35 1xnPin 180度 Y型 PC2.8 6T
DECIMALS:	ANGLES:		PAR FH2.0-09-NPZD
X.±0.30	X°±5'	DWN	
X.X±0.20	X.X°±1'	CHKD	
X.XX±0.10	X.XX°±0.5'	APVD	
CUSTOMER COPY		SCALE N:A	UNIT:MM
		SIZE:A4	SHEET:1F1
			REV:A

## X-ON Electronics

Largest Supplier of Electrical and Electronic Components

*Click to view similar products for [Headers & Wire Housings](#) category:*

*Click to view products by [XUNPU](#) manufacturer:*

Other Similar products are found below :

[57102-F02-18ULF](#) [58102-G61-06LF](#) [582553-1](#) [009176003701906](#) [01.001.5753.1](#) [0050291907](#) [02.125.8002.8](#) [609-3404](#) [61062-3](#)  
[CSU011177004](#) [622-0430](#) [622-3653LF](#) [63453-116](#) [636-1030](#) [636-1427](#) [636-3427](#) [636-4007](#) [641938-9](#) [644827-2](#) [65495-038](#) [65692-001LF](#)  
[65781-018](#) [65781-047](#) [65817-010LF](#) [65817-015LF](#) [66207-023LF](#) [67095-007LF](#) [67601157](#) [68631-112](#) [68645-018](#) [699319-000](#)  
[M90C108951C](#) [70.362.1628.0](#) [70-4210](#) [70-4226B](#) [70-4853B](#) [707-5028](#) [71.350.2428.0](#) [71961-016LF](#) [733-134](#) [733-162](#) [754199-000](#) [760-](#)  
[3052](#) [80.063.4001.1](#) [800-90-001-10-001000](#) [800-90-010-10-002000](#) [801-43-002-10-013000](#) [801-43-006-10-002000](#) [803-41-018-10-001000](#)  
[803-43-024-10-001000](#)