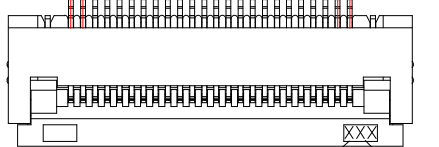
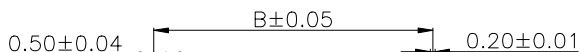
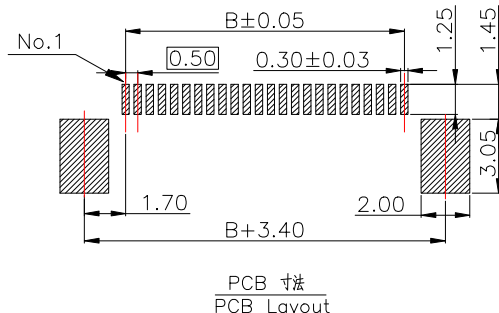
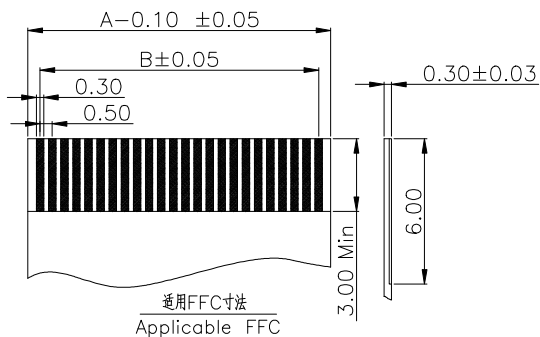
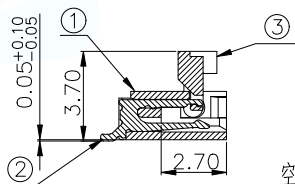
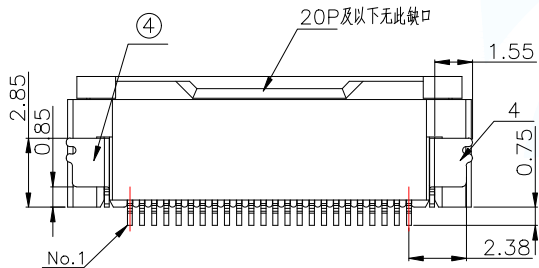
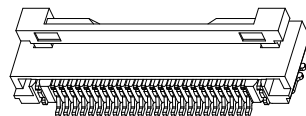
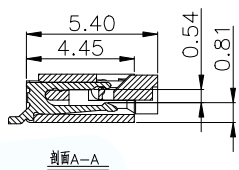


NOTES:

额定电流 Current rating: 0.5A  
 额定电压 Voltage rating: 50V  
 耐压 Withstand voltage: 500V AC/minute  
 接触电阻 Contact resistance: ≤40mΩ  
 绝缘电阻 Insulation resistance: 100MΩ MIN  
 工作温度 Working temperature: -25℃ ~ +85℃  
 触点高低PIN不大于0.05mm.



注: 模具刻字左右对称, 此为—边示意图



Part No	Pin	A	B	C	Part No	Pin	A	B	C
FPC-0.5FX-4PWBH20	4	2.60	1.50	6.70	FPC-0.5FX-33PWBH20	33	17.10	16.00	21.20
FPC-0.5FX-5PWBH20	5	3.10	2.00	7.20	FPC-0.5FX-34PWBH20	34	17.60	16.50	21.70
FPC-0.5FX-6PWBH20	6	3.60	2.50	7.70	FPC-0.5FX-35PWBH20	35	18.10	17.00	22.20
FPC-0.5FX-7PWBH20	7	4.10	3.00	8.20	FPC-0.5FX-36PWBH20	36	18.60	17.50	22.70
FPC-0.5FX-8PWBH20	8	4.60	3.50	8.70	FPC-0.5FX-37PWBH20	37	19.10	18.00	23.20
FPC-0.5FX-9PWBH20	9	5.10	4.00	9.20	FPC-0.5FX-38PWBH20	38	19.60	18.50	23.70
FPC-0.5FX-10PWBH20	10	5.60	4.50	9.70	FPC-0.5FX-39PWBH20	39	20.10	19.00	24.20
FPC-0.5FX-11PWBH20	11	6.10	5.00	10.20	FPC-0.5FX-40PWBH20	40	20.60	19.50	24.70
FPC-0.5FX-12PWBH20	12	6.60	5.50	10.70	FPC-0.5FX-41PWBH20	41	21.10	20.00	25.20
FPC-0.5FX-13PWBH20	13	7.10	6.00	11.20	FPC-0.5FX-42PWBH20	42	21.60	20.50	25.70
FPC-0.5FX-14PWBH20	14	7.60	6.50	11.70	FPC-0.5FX-43PWBH20	43	22.10	21.00	26.20
FPC-0.5FX-15PWBH20	15	8.10	7.00	12.20	FPC-0.5FX-44PWBH20	44	22.60	21.50	26.70
FPC-0.5FX-16PWBH20	16	8.60	7.50	12.70	FPC-0.5FX-45PWBH20	45	23.10	22.00	27.20
FPC-0.5FX-17PWBH20	17	9.10	8.00	13.20	FPC-0.5FX-46PWBH20	46	23.60	22.50	27.70
FPC-0.5FX-18PWBH20	18	9.60	8.50	13.70	FPC-0.5FX-47PWBH20	47	24.10	23.00	28.20
FPC-0.5FX-19PWBH20	19	10.10	9.00	14.20	FPC-0.5FX-48PWBH20	48	24.60	23.50	28.70
FPC-0.5FX-20PWBH20	20	10.60	9.50	14.70	FPC-0.5FX-49PWBH20	49	25.10	24.00	29.20
FPC-0.5FX-21PWBH20	21	11.10	10.00	15.20	FPC-0.5FX-50PWBH20	50	25.60	24.50	29.70
FPC-0.5FX-22PWBH20	22	11.60	10.50	15.70	FPC-0.5FX-51PWBH20	51	26.10	25.00	30.20
FPC-0.5FX-23PWBH20	23	12.10	11.00	16.20	FPC-0.5FX-52PWBH20	52	26.60	25.50	30.70
FPC-0.5FX-24PWBH20	24	12.60	11.50	16.70	FPC-0.5FX-53PWBH20	53	27.10	26.00	31.20
FPC-0.5FX-25PWBH20	25	13.10	12.00	17.20	FPC-0.5FX-54PWBH20	54	27.60	26.50	31.70
FPC-0.5FX-26PWBH20	26	13.60	12.50	17.70	FPC-0.5FX-55PWBH20	55	28.10	27.00	32.20
FPC-0.5FX-27PWBH20	27	14.10	13.00	18.20	FPC-0.5FX-56PWBH20	56	28.60	27.50	32.70
FPC-0.5FX-28PWBH20	28	14.60	13.50	18.70	FPC-0.5FX-57PWBH20	57	29.10	28.00	33.20
FPC-0.5FX-29PWBH20	29	15.10	14.00	19.20	FPC-0.5FX-58PWBH20	58	29.60	28.50	33.70
FPC-0.5FX-30PWBH20	30	15.60	14.50	19.70	FPC-0.5FX-59PWBH20	59	30.10	29.00	34.20
FPC-0.5FX-31PWBH20	31	16.10	15.00	20.20	FPC-0.5FX-60PWBH20	60	30.60	29.50	34.70
FPC-0.5FX-32PWBH20	32	16.60	15.50	20.70					

4	0.5mm间距翻盖式下接—焊片	PhosphorBronze T=0.20MM	镀锡	各 1 PCS	右/左焊片
3	0.5mm间距翻盖式下接—锁扣	LCP	黑色	1 PCS	
2	0.5mm间距翻盖式下接—PIN	PhosphorBronze T=0.20MM	镀锡/镀金/全金	N PCS	
1	0.5mm间距翻盖式下接—底座	LCP	米色	1 PCS	
序号	品 名	材料规格	电镀方式/颜色	使用数量	备 注

MANUFACTURE DWG			东莞市讯普电子科技有限公司 DongGuan XunPu Electronics Co.,Ltd	
UNLESS OTHERWISE SPECIFIED TOLERANCES			TITLE: 0.5mm间距翻盖式下接H2.0商	
DECIMALS:	ANGLES:		PAR	FPC-0.5FX-NPWBH20
.X:±0.38	.X':±5°		DWN	
.XX:±0.20	.XX':±3°	CHKD		
.XXX:±0.05	.XXX':±1°	APVD		
CUSTOMER COPY		SCALE1:1	UNIT:MM	
		SIZE:A4	SHEET:1F1	REV:A

## X-ON Electronics

Largest Supplier of Electrical and Electronic Components

*Click to view similar products for [FFC & FPC Connectors](#) category:*

*Click to view products by [XUNPU](#) manufacturer:*

Other Similar products are found below :

[00-6200-227-022-800](#) [006205250500825+](#) [006205280500825+](#) [FPH-1602G](#) [086222026001800](#) [52610-0675](#) [62674-201121DLF](#) [52746-1671-TR250](#) [10051922-1610EHLF](#) [10051922-2810EHLF](#) [686322124422](#) [XF3M-2915-1B-R100](#) [AYF353125A](#) [AYF530665TA](#) [AYF534065TA](#) [20FLH-RSM1-TB](#) [207356-1](#) [SFW12R-5STE9LF](#) [SFW18R-1STAE9LF](#) [SFW4R-5STE9LF](#) [52807-0430](#) [046283021002868+](#) [FFC05011-10SBB114W5M](#) [502250-8027](#) [67000-008LF](#) [200528-0260](#) [FH28K-10S-0.5SH](#) [FH52K-6S-0.5SH](#) [0.5K-DX-30PWB](#) [DS1020-08-10VBT12](#) [THD0515-34CL-GF](#) [X05A10L28G](#) [ECC2841061EU](#) [1.0K-DHQX-16PWB](#) [1.0K-DHQX-30PWB](#) [1775333-6](#) [10054365-202110ELF](#) [10054365-242110ELF](#) [10054365-282110ELF](#) [10064555-392220HLF](#) [59453-041110EBHLF](#) [59453-091110EDHLF](#) [62674-241141ALF](#) [62684-432100ALF](#) [62684-451100AHLF](#) [62684-5721N0ALF](#) [HFW11R-1STE1MTLF](#) [HFW12R-1STE9LF](#) [HFW14R-1STE9MTLF](#) [HFW18S-2STE9LF](#)