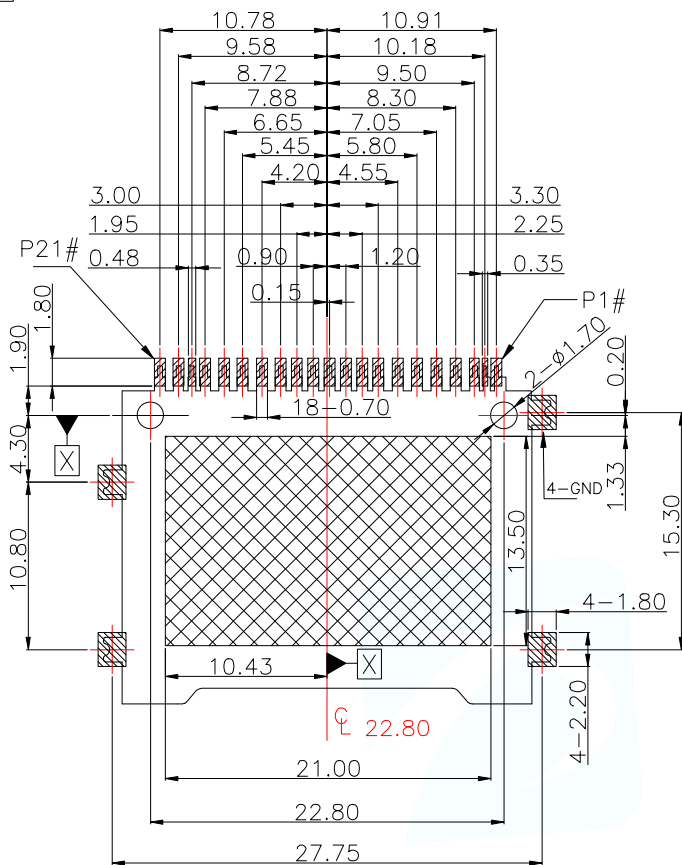


MANUFACTURE DWG		 东莞市讯普电子科技有限公司 DongGuan XunPu Electronics Co.,Ltd	TITLE: SD7.0 No Push H3.90 客户图	
UNLESS OTHERWISE SPECIFIED TOLERANCES			PAR	SD-701-ACP21
DECIMALS:	ANGLES:	DWN		
.X:±0.30	X.' :±2'	CHKD		
.XX:±0.20	X.X' :±1'	APVD		
.XXX:±0.10		SCALE1:1	UNIT:MM	
		SIZE:A4	SHEET:1F1	
		Website address	REV:A	



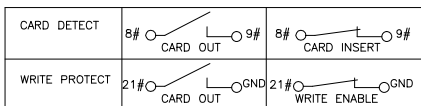


RECOMMEND P.C.B LAYOUT
(General tolerance ±0.05)

- PAD AREA
- KEEP OUT AREA
- NO COPPER AREA
(NO Trace&Via&GND)
- GND PATTERN ONLY



Circuit Diagram for CARD Detect/Write Protect Switch



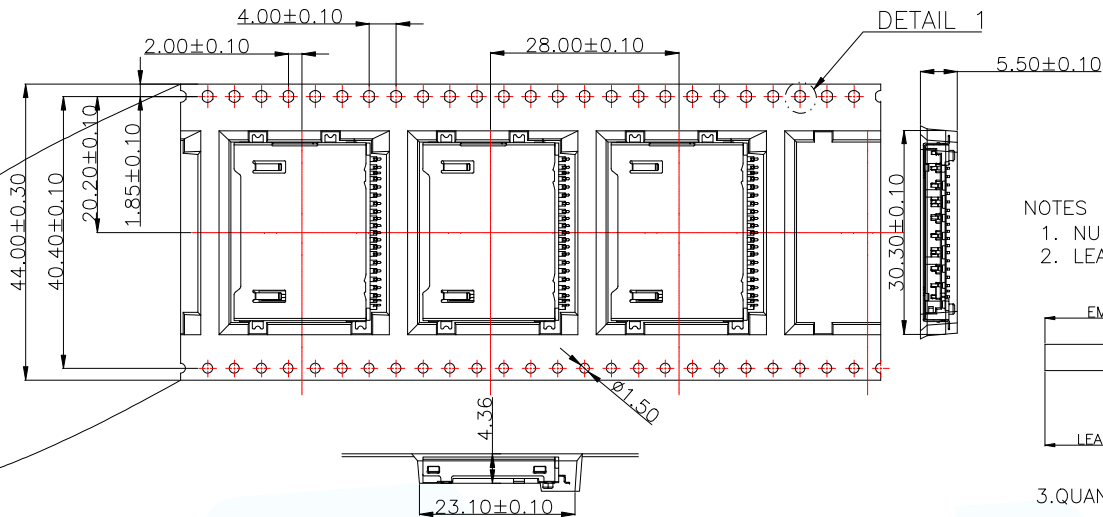
NOTES:

- 1.Operation Voltage :10V AC
- 2.Current rating:1.0A Max
- 3.Contact resistance:100mΩ MAX
- 4.Dielectric withstanding voltage:500V AC/1minute
- 5.Insulation resistance:1000MΩ min 500V DC
- 6.Operation temperature:-20°C to 60°C
- 7.Storage temperature:-20°C to 70°C
- 8.Durability:10,000 CYCLES
- 9.PLATING:
 - 9-1 CONTACT: 1u"OR30u" min.GOLD PLATED ON CONTACT AREA
80u" min.TIN(MATTE) PLATING ON SOLDER TAIL AREA
50u" min.NICKEL UNDERPLATING OVERALL
 - 9-2 SHELL :1u" min.GOLD PLATED ON SOLDER,30u" min. NICKEL PLATING OVERALL
- 10.Recommending A Metal More Than 0.15mm Thick.
Please Confirm Solderability, If Use A Metal Mask Less Than 0.15mm Thick.

No.	Pin Assignment					
	SD MODE		UHS II MODE		SD EXPRESS MODE	
P1			VSS3	SUPPLY VOLTAGE GROUND	VSS3	SUPPLY VOLTAGE GROUND
P2					RESERVED	RESERVED ARED FOR FUTURE PAD EXTENSION
P3	DATA2	DATA LINE BIT2			CLKREQ#	REFERENCE CLOCK REQUEST SIGNAL ALSO USED BY L1 PM SUB-STATES
P4			DO+	DIFFERENTIAL DATA 0+	PCLE TX+	
P5	CD/DATA3	CARD DETECT/DATA LINE BIT2		NOT USED	PERST#	PE-RESET IS A FUNCTIONAL RESET
P6			DO-	DIFFERENTIAL DATA 0-	PCLE TX-	
P7	CMD	COMMAND/RESPONSE		NOT USED		NOT USED
P8	CD	CARD DETECT	CD	CARD DETECT	CD	CARD DETECT
P9	VSS1	SUPPLY VOLTAGE GROUND	VSS1	SUPPLY VOLTAGE GROUND	VSS1	SUPPLY VOLTAGE GROUND
P10			VSS4	SUPPLY VOLTAGE GROUND	VSS4	SUPPLY VOLTAGE GROUND
P11			VDD2	SUPPLY VOLTAGE (1.8V)	VDD2	SUPPLY VOLTAGE (1.8V)
P12	VDD	SUPPLY VOLTAGE	VDD1	SUPPLY VOLTAGE (3.3V)	VDD1	SUPPLY VOLTAGE (3.3V)
P13			D1-	DIFFERENTIAL DATA 1-	PCLE RX-	
P14	CLK	CLOCK		NOT USED		NOT USED
P15			D1+	DIFFERENTIAL DATA 1+	PCLE RX+	
P16	VSS2	SUPPLY VOLTAGE GROUND	VSS2	SUPPLY VOLTAGE GROUND	VSS2	SUPPLY VOLTAGE GROUND
P17			VSS5	SUPPLY VOLTAGE GROUND	VSS5	SUPPLY VOLTAGE GROUND
P18	DATO	DATA LINE BIT0	RCLK+		REFCLK+	PCLE REF CLOCK
P19					VDD2	SUPPLY VOLTAGE (1.2V)-TBD
P20	DAT1	DATA LINE BIT1	RCLK-		REFCLK-	PCLE REF CLOCK
P21	WP	WRITE PROTECT	WP	WRITE PROTECT	WP	WRITE PROTECT

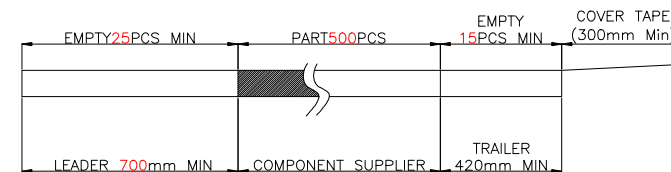
MANUFACTURE DWG			东莞市讯普电子科技有限公司 DongGuan XunPu Electronics Co.,Ltd	
UNLESS OTHERWISE SPECIFIED TOLERANCES			TITLE: SD7.0 No Push H3.90 客户图	
DECIMALS:	ANGLES:	PAR	SD-701-ACP21	
.X:±0.30	X':±2'	DWN		
.XX:±0.20	X.X':±1'	CHKD		
.XXX:±0.10		APVD		
Website address		SCALE1:1	UNIT:MM	
		SIZE:A4	SHEET:1F1	REV:A

USER DIRECTION OF UNREELING →



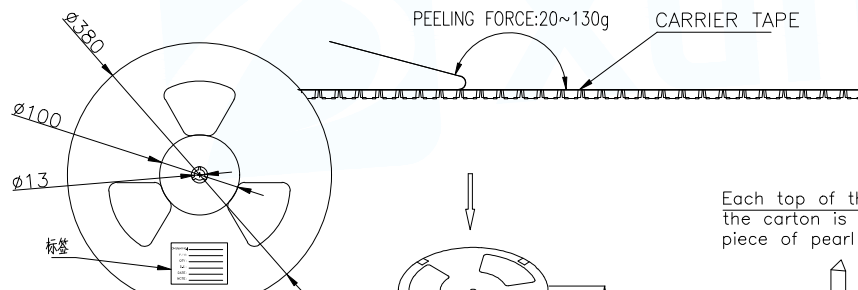
NOTES

1. NUMBER OF CONNECTORS: 500 PCS/REEL
2. LEAD TAPE LENGTH

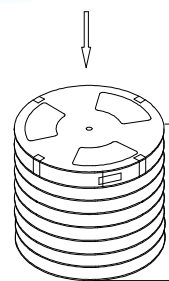


3. QUANTITY: 3000 PCS/CARTON

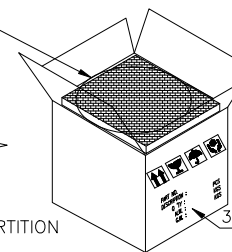
COVER TAPE PEELING ANGLE: 165°~180°
PEELING FORCE: 20~130g



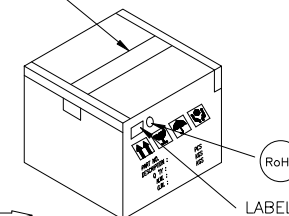
Each top of the bottom of the carton is protected by a piece of pearl cotton



4-TRIANGLE PARTITION
95*95*290 K3K

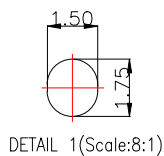
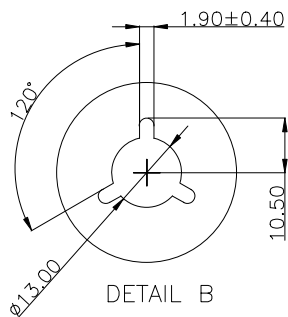


Tape type sealing box



CARTON
395*395*340 K=K

8 rolls per carton



MANUFACTURE DWG		 东莞市讯普电子科技有限公司 DongGuan XunPu Electronics Co.,Ltd	
UNLESS OTHERWISE SPECIFIED TOLERANCES		TITLE: SD7.0 No Push H3.90 客户图	
DECIMALS:	ANGLES:	PAR	SD-701-ACP21
.X:±0.30	X.':±2'	DWN	
.XX:±0.20	X.X':±1'	CHKD	
.XXX:±0.10		APVD	
		SCALE 1:1	UNIT:MM
		SIZE:A4	SHEET:1F1
		Website address	REV:A



X-ON Electronics

Largest Supplier of Electrical and Electronic Components

Click to view similar products for [Memory Card Connectors](#) category:

Click to view products by [XUNPU](#) manufacturer:

Other Similar products are found below :

[6407-249V-25273P](#) [6407-249V-25343P](#) [6426-201-21343](#) [69.920.0553.0](#) [MCR60A-98D-2.54DSA\(70\)](#) [809180410000000](#) [DM3AT-SF-PEJM5\(41\)](#) [IC11S-BUR-PNEJL\(71\)](#) [C70210M0083692](#) [2041353-2](#) [308-DS1P0811-192](#) [HM2P09PDR360N9LF](#) [10014744-011TLF](#) [11327-001](#) [11327-002](#) [NX1-32T-KT3K\(05\)](#) [95622-003LF](#) [84648-056HLF](#) [CCM03-3109 B LFT](#) [MS3116J10-6PW](#) [2309923-1](#) [61126-050CAHLF](#) [GTFP08432B1HR](#) [G85D1160022HHR](#) [SCE2MSDZN76A121SN](#) [10014744-011ALF](#) [10014744-011LF](#) [10057542-1211FLF](#) [10067972-000LF](#) [10067972-050LF](#) [10122302-20110LF](#) [G85D1162022HHR](#) [TF-05A](#) [M6014-12](#) [XKNANO-1412](#) [SMN-304-ARP6](#) [MIS11-S1F1-2000-A](#) [SMN-308-ARSP7](#) [MCS-302S-KT1B](#) [SMN-308-ACSP7](#) [K-DYX-008](#) [K-DYX-004](#) [HYCW126-TF18-150B](#) [C7024-03](#) [SMO-1030](#) [MCS-110-KT](#) [SIM-217](#) [SNO-1355-KT](#) [SMO-1025-P10](#) [SIM-211S-P6](#)