

NOTE:

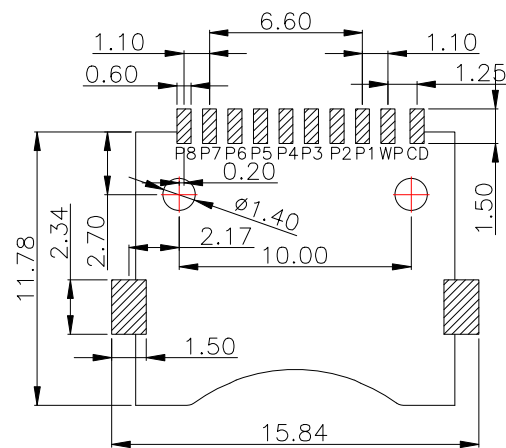
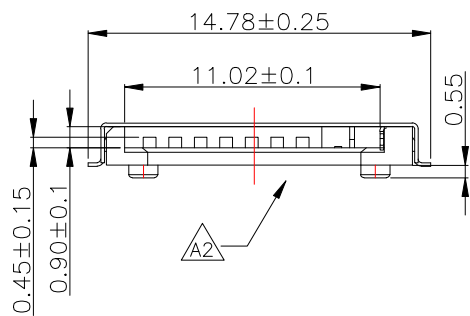
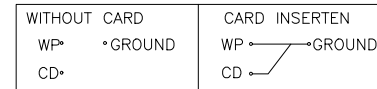
1.MATERIAL:

- 1.1 INSULATOR:LCP UL 94V-0,BLACK
- 1.2 CONTACT:C5191;30u" MIN NICKEL UNDERPALTED OVERALL 80u"MIN Tin PLATED ON SOLDER AREA G/F PALTED ON CONTACT AREA
- 1.3 SHELL:C2680,50u" Ni PALTED OVERALL

2.ELECTRICAL CHARACTERISTICS;

- 2.1 CONTACTRESISTANCE:100mΩ MAX.
- 2.2 CONTACT CURRENT RATING:0.5A
- 2.3 DIELECTRIC WITHSTANDING VOLTAGE:500 V R.M.S.
- 2.4 INSULATION RESISTANCE 1000 MΩ MIN.
- 2.5 OPERATING TEMPERATURE:-40°C ~ 85°C

Pin No.	NAME
1	DAT2
2	CD/DAT3
3	CMD
4	VDD
5	CLK
6	VSS
7	DAT0
8	DAT1

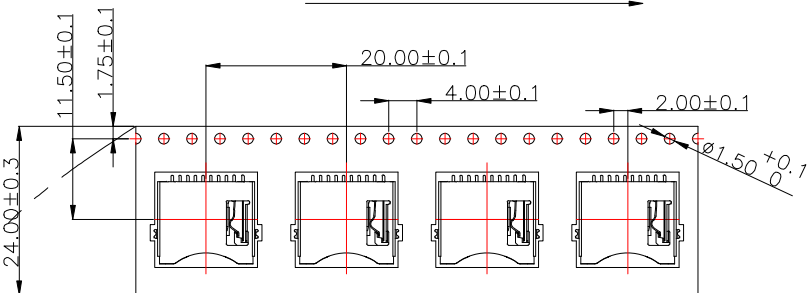


Recommended P.C.B Layout(Top Side)

MANUFACTURE DWG		东莞市讯普电子科技有限公司 DongGuan XunPu Electronics Co.,Ltd	TITLE:	
UNLESS OTHERWISE SPECIFIED TOLERANCES			T-F 简易卡座无卷边	
DECIMALS:	ANGLES:	PAR	TF-124-ACP10	
.X:±0.38	.X':±2°	DWN		
.XX:±0.25	.X':±1°	CHKD		
.XXX:±0.15	.XX':±0.5°	APVD		
CUSTOMER COPY		SCALE1:1	UNIT:MM	⊕
		SIZE:A4	SHEET:1F1	REV:A

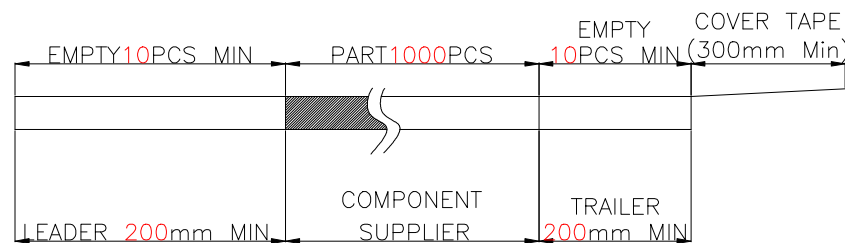
MAPX	MODIFICATION	DATE	DRAW	APPROVE

User Direction of Unreeling



NOTES

1. NUMBER OF CONNECTORS: 1000PCS/REEL
2. LEAD TAPE LENGTH

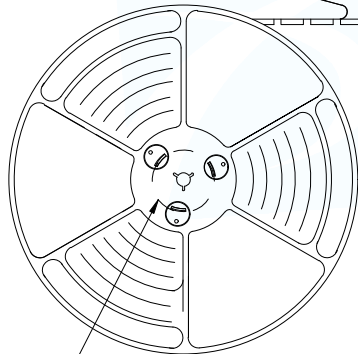
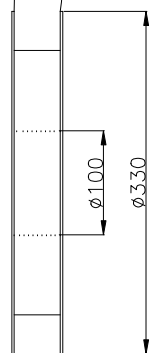


3. QUANTITY: 10000PCS/CARTON

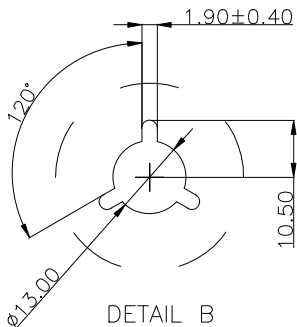
COVER TAPE PEELING ANGLE: 165°~180°
PEELING FORCE: 20~130g

CARRIER TAPE

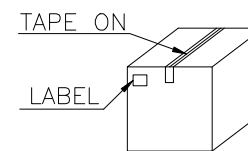
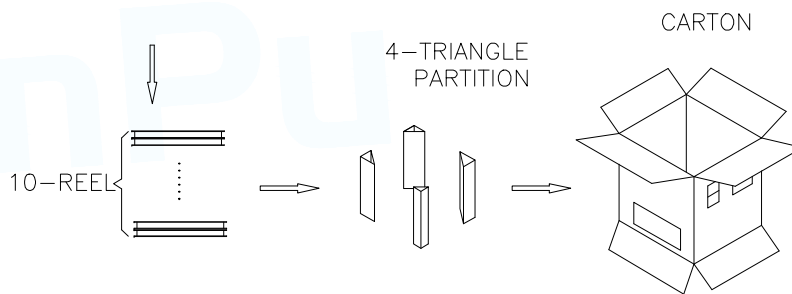
User Direction of Unreeling



DETAIL B



DETAIL B



MANUFACTURE DWG		东莞市讯普电子科技有限公司 DongGuan XunPu Electronics Co.,Ltd	TITLE:	
UNLESS OTHERWISE SPECIFIED TOLERANCES			T-F 简易卡座无卷边	
DECIMALS:	ANGLES:	PAR	TF-124-ACP10	
.X:±0.38	.X':±2°	DWN		
.XX:±0.25	.X'':±1°	CHKD		
.XXX:±0.15	.XX':±0.5°	APVD		
CUSTOMER COPY		SCALE:1:1	UNIT:MM	⊕ ◁
		SIZE:A4	SHEET:1F1	REV:A

X-ON Electronics

Largest Supplier of Electrical and Electronic Components

Click to view similar products for [Memory Card Connectors](#) category:

Click to view products by [XUNPU](#) manufacturer:

Other Similar products are found below :

[M21-033321-005](#) [6407-249V-25273P](#) [6407-249V-25343P](#) [69.920.0553.0](#) [MCR60A-98D-2.54DSA\(70\)](#) [809180410000000](#) [DM3AT-SF-PEJM5\(41\)](#) [IC11S-BUR-PNEJL\(71\)](#) [252-0144-000](#) [2041353-2](#) [308-DS1P0811-192](#) [HM2P09PDR360N9LF](#) [10014744-011TLF](#) [11327-001](#) [11327-002](#) [617230001](#) [NX1-32T-KT3K\(05\)](#) [95622-003LF](#) [N7E50-U516RB-50-SIN0005](#) [84648-056HLF](#) [68-580163-21S](#) [93-570123-08P](#) [CCM03-3109 B LFT](#) [2309923-1](#) [61126-050CAHLF](#) [IC1GA-68PD-1.27DS-EJ\(72\)](#) [GTFP08432B1HR](#) [SCE2MSDZN76A121SN](#) [10014744-011ALF](#) [10014744-011LF](#) [10057542-1211FLF](#) [10067972-000LF](#) [10067972-050LF](#) [10122302-20110LF](#) [G85D1162022HHR](#) [MUP-C7809-1](#) [NANO SIM 7P H1.37](#) [MICRO SIM 7P H1.35](#) [TF-CARD H1.8 SY](#) [MICRO SIM 6P H1.35](#) [TF-CARD H1.8](#) [TF-115Y-BCP9](#) [TF-115YY-ACP9](#) [SMN-309-ARP6](#) [TF-115Y-ACP9](#) [TF-108-ARP10](#) [SMN-303S-ACP7](#) [SNO-14100](#) [SD-112S](#) [MUP-C7804-1](#)