

# DATA SHEET

## WIRELESS COMPONENTS

Ceramic Chip Antenna

ANT1005LL14R2400A

2.4 - 2.5GHz

I005 Series



## FEATURES

- Compact size
- Omni-directional Radiation
- Tape & reel automatic mounting
- Reflow process compatible
- RoHS compliant

## APPLICATIONS

- 2.4GHz WiFi device
- Bluetooth gadget
- Zigbee device
- ISM band equipment

## ORDERING INFORMATION

All part numbers are identified by the series, packing type, material, size, antenna type, working frequency and packing quantity.

### **PART NUMBER**

**ANT 1005 L L14 R 2400A**  
(1) (2) (3) (4) (5) (6)

---

#### **(1) PRODUCT**

ANT = Antenna

---

#### **(2) SIZE**

1005 = 1.0 × 0.5 mm

---

#### **(3) ANTENNA TYPE**

L,F,A = Chip Antenna

---

#### **(4) SERIAL NO.**

L14

---

#### **(5) PACKING STYLE**

R = Tape and Reel

---

#### **(6) WORKING FREQUENCY**

2400 = 2.4GHz

**SPECIFICATION**

Table 1

DESCRIPTION	VALUE
Working Frequency	2.4 ~ 2.484 GHz
Bandwidth	120 MHz(Typ.)
VSWR	3.0 Max
Polarization	Linear
Azimuth Beamwidth	Omni-directional
Peak Gain	2.21 dBi(Typ.)
Impedance	50 Ω
Operating Temperature	- 40~105 °C
Maximum Power	1 W
Termination	Ag (Environmentally-Friendly Leadless)
Resistance to Soldering Heats	260°C , 5sec.

**NOTE**

1. The specification is defined on Yageo evaluation board

**DIMENSIONS**

Table 2 Mechanical Dimension

	DIMENSION
L (mm)	1.0 ±0.10
W (mm)	0.5 ±0.10
T (mm)	0.37(max)
P1 (mm)	0.25 +0.1/-0.05
P2 (mm)	0.15 +0.1/-0.05
P3 (mm)	0.25 +0.1/-0.05
P4 (mm)	0.15 +0.1/-0.05

**OUTLINES**

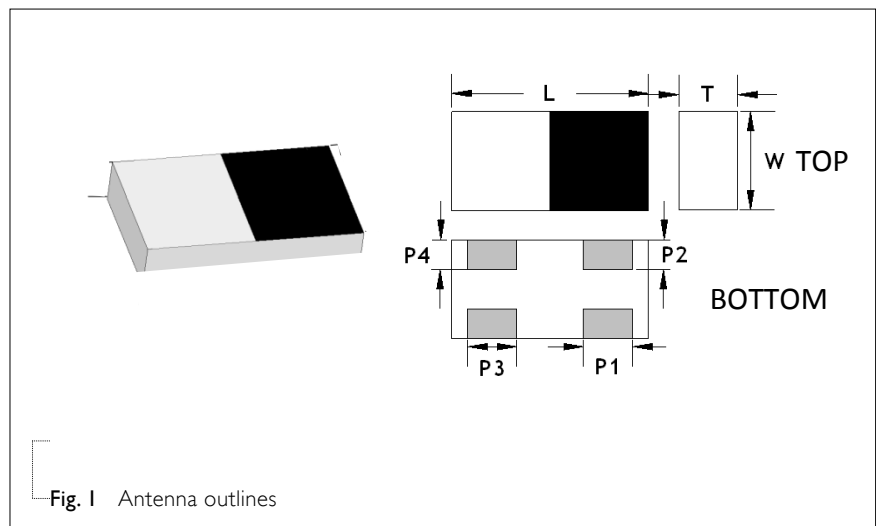
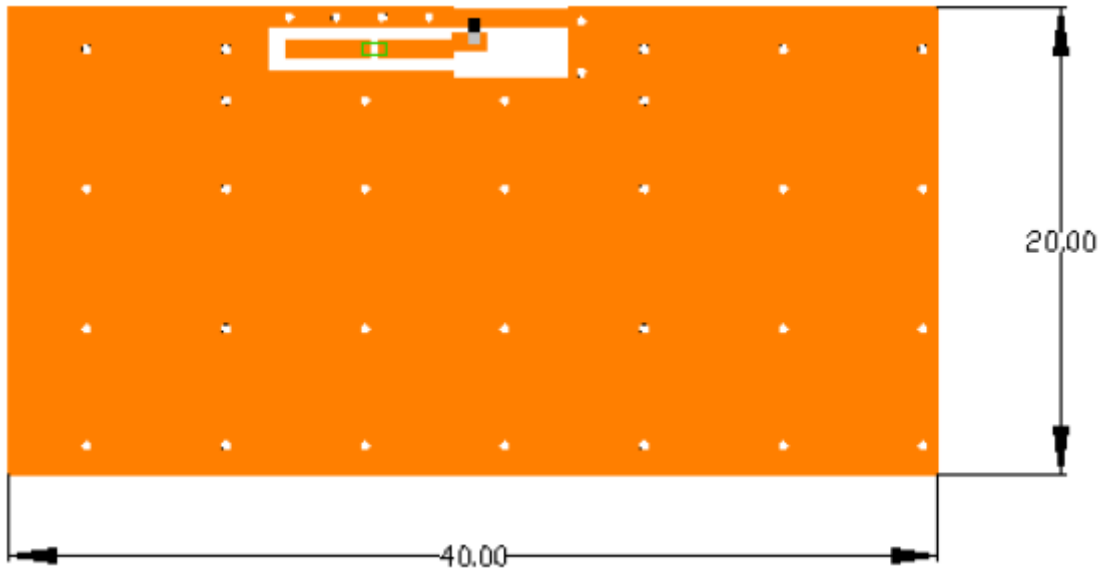


Fig. 1 Antenna outlines

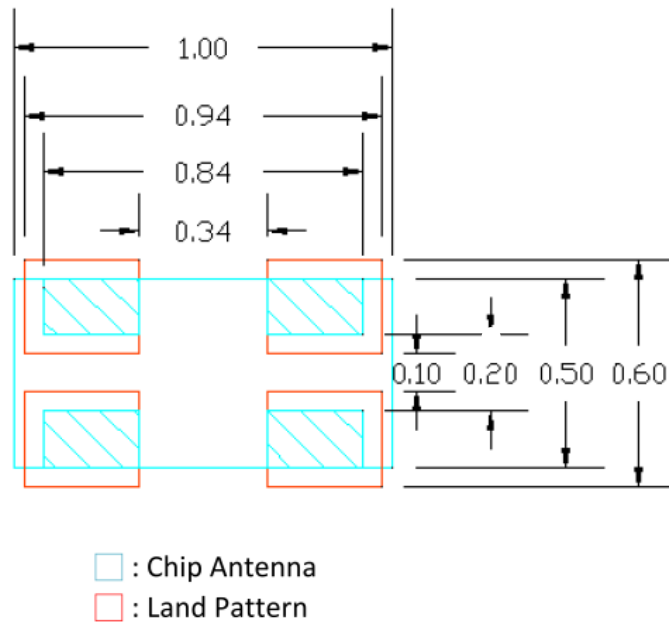
Table 3 Termination configuration

TERMINAL NAME	FUNCTION
P1	Ground Point
P2	Ground Point
P3	Feeding Point
P4	Feeding Point

**REFERENCE DESIGN OF EVALUATION BOARD**



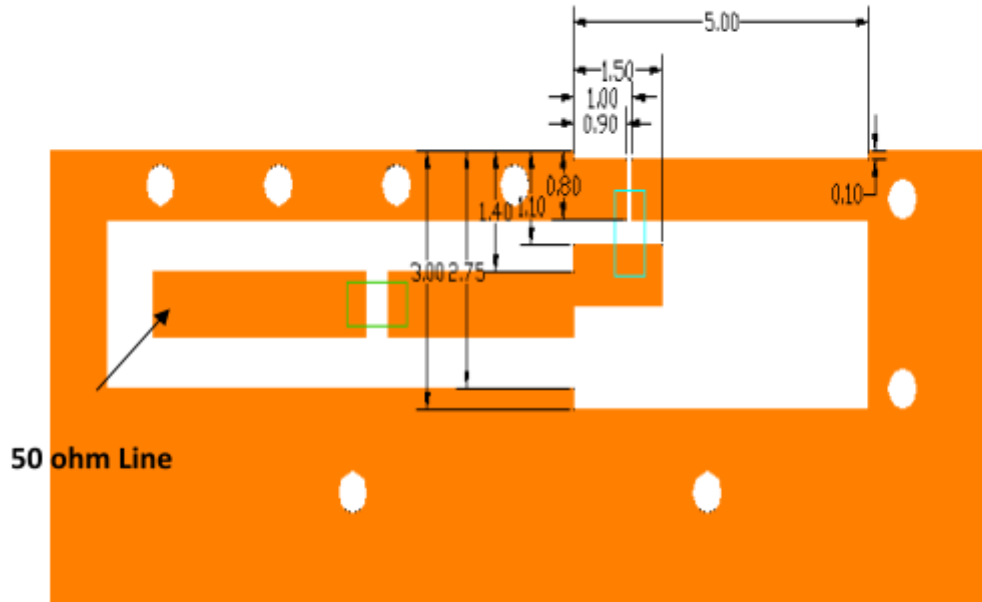
**Fig. 2** Outlook and dimension of evaluation board



**Unit:mm**

**Fig. 3** Footprint

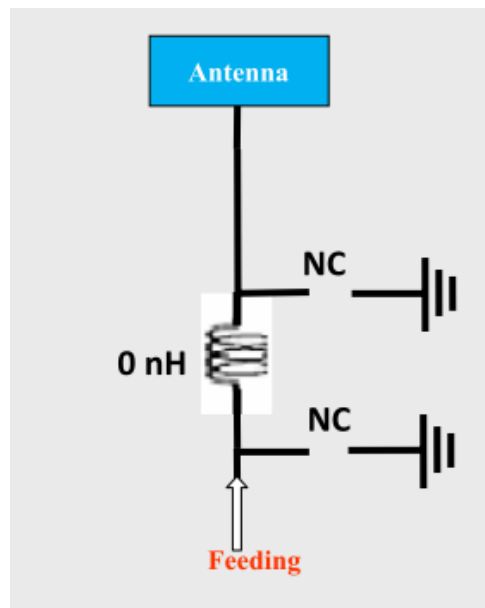
**Clearance size: 5x 3mm**



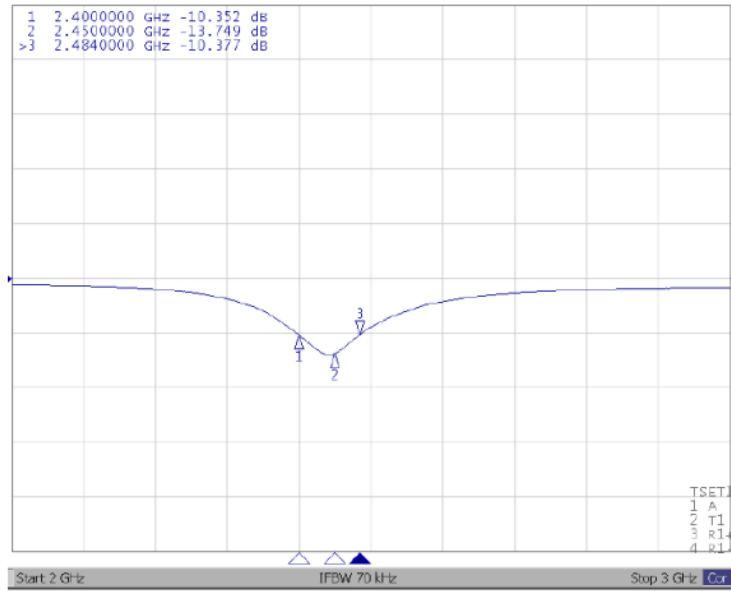
Unit : mm

- : Chip Antenna
- : L/C matching components
- : Land Pattern

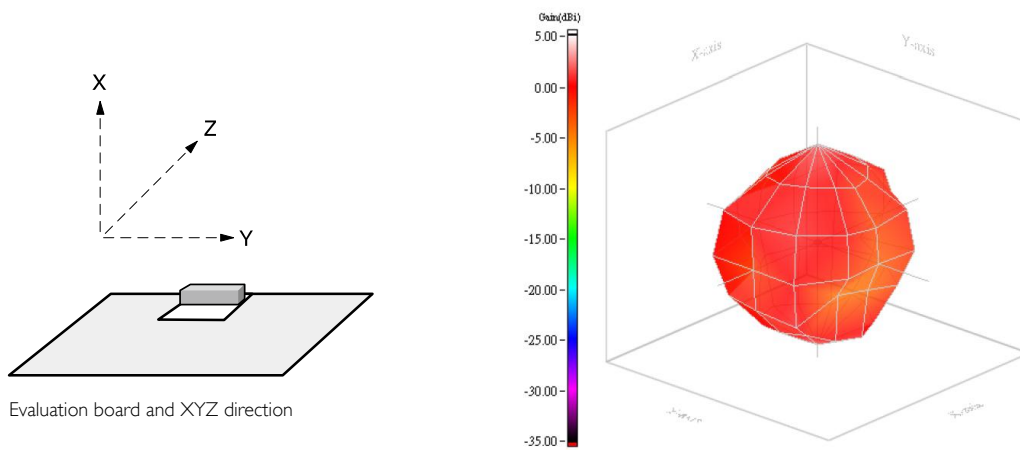
Fig. 4 Details of soldering Pad



**ELECTRICAL PERFORMANCES**



**Fig. 5** Return loss



**Fig. 6** Radiation pattern

REVISION HISTORY

REVISION	DATE	CHANGE NOTIFICATION	DESCRIPTION
Version 0	Feb. 14, 2017	-	- New data sheet for SMD type antenna, 2.45GHz application, I005 series PIFA mode

## X-ON Electronics

Largest Supplier of Electrical and Electronic Components

*Click to view similar products for [Antennas](#) category:*

*Click to view products by [Yageo](#) manufacturer:*

Other Similar products are found below :

[CCT FM1](#) [ABFT](#) [AD-NM-SMAF 001-0021](#) [CTC110](#) [MAF94149](#) [EXE902SF](#) [MMCX-SMA-100](#) [PDQ24496-91NF](#) [GAN30084EU](#) [930-033-R](#) [A08-HABUF-P5I](#) [AAF95035](#) [DG-ANT-20DP-BG-B](#) [APAMPGJ-141](#) [1513563-1](#) [OF86315-FNF](#) [OP24516DS-91NM](#) [A09-HASM-7](#) [EXE902MD](#) [EXE902SM](#) [SPDA17806/2170LAR](#) [APAMPG-117](#) [GPS1575SP26-004](#) [GPS15MGSMA](#) [CMD69273P-30NF](#) [CMQ69273-30NF](#) [RD2458-5-OTDR-NM](#) [RD2458-5-RSMA](#) [TRAB24/49003](#) [W4120ER5000](#) [W6102B0100](#) [YE572113-30RSMM](#) [108-00014-50](#) [SPDA17RP918](#) [OP24516SX-91NM](#) [OP24516SX-91RSMM](#) [CMQ69273P-30NF](#) [CMS69273-30NF](#) [CMS69273P-30NF](#) [TRAB24003N](#) [TRAB24003NP](#) [TRAB8213NP](#) [TRAB8903](#) [A09-Y8NF](#) [A09-Y11NF](#) [A09-HSM-7](#) [A09-F8NF-M](#) [A09-F5NF-M](#)