

Description: 1005 2.4GHz Band Pass Filter

PART NUMBER: BPF1005LM03R2400A

Features:

- Compact size : 1.0x0.5x0.35mm
- RoHS compliant

Applications:

- WLAN, 802.11b/g/n
- ISM Band

ELECTRICAL SPECIFICATIONS

DESCRIPTION	Value
Pass Band	2400 ~ 2500 MHz
Insertion Loss	1.5 dB (Max.) at 20°C
V.S.W.R / Return Loss	2.0 (Max) / 10dB (Min.)
Attenuation	10 dB Min@ 880 ~ 960 MHz 25 dB Min@ 4800 ~ 5000 MHz 25 dB Min@ 7200 ~ 7500 MHz
Operating Temperature	-40 ~ 85°C

In the effort to improve our products, we reserve the right to make changes judged to be necessary.

CONFIDENTIAL AND PROPRIETARY INFORMATION

This document contains confidential and proprietary information of Pulse Electronics, Inc. (Pulse) and is protected by copyright, trade secret and other state and federal laws. Its receipt or possession does not convey any rights to reproduce, disclose its contents, or to manufacture, use or sell anything it may describe. Reproduction, disclosure or use without specific written authorization of Pulse is strictly forbidden.

For more information:



Pulse Worldwide Headquarters
15255 Innovation Drive #100
San Diego, CA 92128
USA
Tel:1-858-674-8100

Pulse/Larsen Antennas
18110 SE 34th St Bldg 2 Suite 250
Vancouver, WA 98683
USA
Tel: 1-360-944-7551

Europe Headquarters
Pulse GmbH & Do, KG
Zeppelinstrasse 15
Herrenberg, Germany
Tel: 49 7032 7806 0

Pulse (Suzhou) Wireless Products Co, Inc.
99 Huo Ju Road(#29 Bldg,4th Phase
Suzhou New District
Jiangsu Province, Suzhou 215009 PR China
Tel: 86 512 6807 9998

Description: 1005 2.4GHz Band Pass Filter

PART NUMBER: BPF1005LM03R2400A

MECHANICAL DIMENSION

Outline

Termination

Mechanical

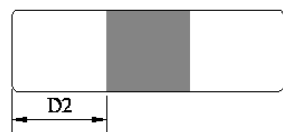
Top View

Side View

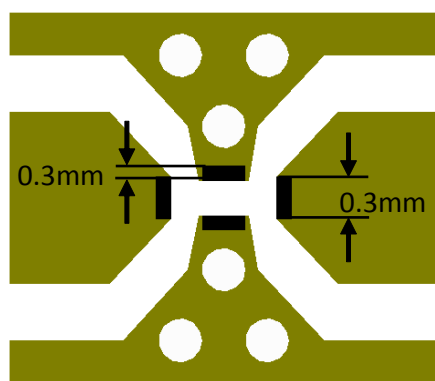
Terminal name	Function
P1	Input
P2	GND
P3	Output
P4	GND




	Dimension
L (mm)	1.00±0.10
W (mm)	0.50±0.10
T (mm)	0.35±0.10
P1 (mm)	0.30±0.15
P2 (mm)	0.30±0.15
P3 (mm)	0.30±0.15
P4 (mm)	0.30±0.15
D1 (mm)	0.10±0.10
D2 (mm)	0.35±0.15

Side View



Reference design of EVB



-  Solder Resist
-  Land
-  Via diameter=0.3mm

Line width should be designed to match 50Ω characteristic impedance, depending on PCB material and thickness.

In the effort to improve our products, we reserve the right to make changes judged to be necessary.

CONFIDENTIAL AND PROPRIETARY INFORMATION

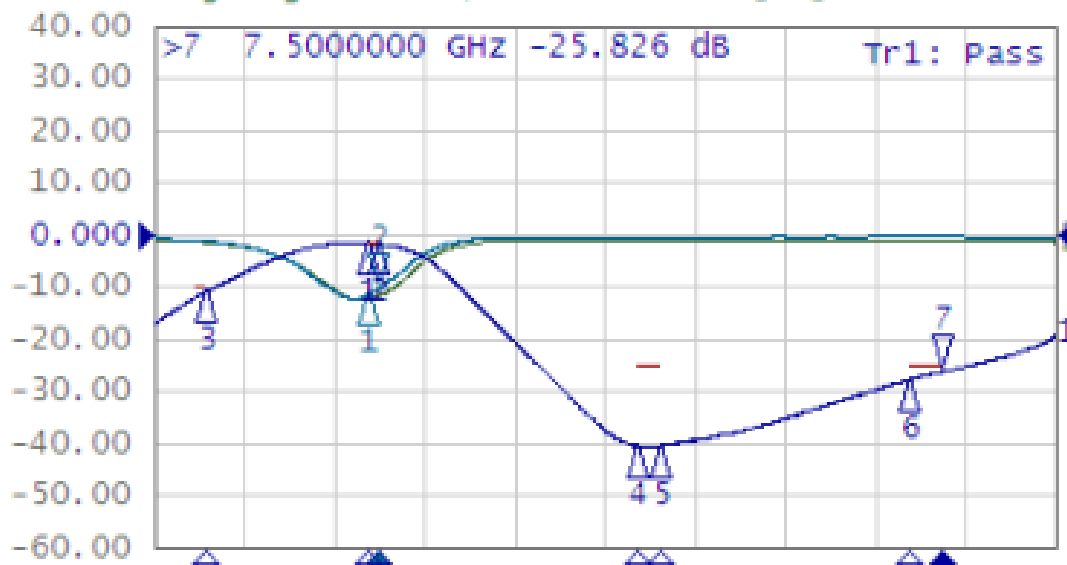
This document contains confidential and proprietary information of Pulse Electronics, Inc. (Pulse) and is protected by copyright, trade secret and other state and federal laws. Its receipt or possession does not convey any rights to reproduce, disclose its contents, or to manufacture, use or sell anything it may describe. Reproduction, disclosure or use without specific written authorization of Pulse is strictly forbidden.

Description: 1005 2.4GHz Band Pass Filter

PART NUMBER: BPF1005LM03R2400A

ELECTRICAL PERFORMANCES

Tr1 S31 Log Mag 10.00dB/ Ref 0.000dB [F2]
 Tr5 S11 Log Mag 10.00dB/ Ref 0.000dB [F2]
 Tr9 S33 Log Mag 10.00dB/ Ref 0.000dB [F2]



- Measured on Agilent E5071C Network Analyzer
- Input port : Port 1 (Return loss : S11)
- Output port : Port 3 (Return loss : S33)
- Insertion loss : S31

Frequency Characteristics

Description: 1005 2.4GHz Band Pass Filter

PART NUMBER: BPF1005LM03R2400A

REVISION HISTORY

Revision	Date	Description
Version 1	Oct. 07, 2020	- New issue

X-ON Electronics

Largest Supplier of Electrical and Electronic Components

Click to view similar products for [Signal Conditioning category](#):

Click to view products by [Yageo manufacturer](#):

Other Similar products are found below :

[MAPDCC0001](#) [MAPDCC0004](#) [PD0409J5050S2HF](#) [HHS-109-PIN](#) [AFS14A35-1591.50-T3](#) [DS-323-PIN](#) [JP510S](#) [LFB322G45SN1A504](#)
[SF2159E](#) [FM-104-PIN](#) [CER0813B](#) [MAPDCC0005](#) [3A325](#) [BD0810N50100AHF](#) [JHS-115-PIN](#) [DC0710J5005AHF](#) [DC2327J5005AHF](#)
[LFB2H2G60BB1C106](#) [LFL15869MTC1B787](#) [X3C19F1-20S](#) [XC3500P-20S](#) [CDBLB455KCAX39-B0](#) [RF1353C](#) [051157-0000](#)
[PD0922J5050D2HF](#) [600S150FTRB](#) [1E1305-3](#) [1F1304-3S](#) [1G1304-30](#) [2020-6622-20](#) [TP-103-PIN](#) [BD1222J50200AHF](#) [BD1722J50100AHF](#)
[2450DP39K5400E](#) [BD1722J50200AHF](#) [DSS-113-PIN](#) [MACP-008125-CK07F0](#) [DS-329-PIN](#) [DS-313-PIN](#) [M38510/10304BCA](#) [TP-104-PIN](#)
[856019](#) [JP506S](#) [XC0900P-10S](#) [XC0900B-30S](#) [CHS-134-PIN](#) [CHE1260-QAG](#) [11305-10](#) [5962-9091202MXA](#) [3A412S](#)