

Description: 1608 2.4G&2.5GHz Band Pass Filter

PART NUMBER: BPF1608LM02R2400A

Features:

- Compact size : 1.6x0.8x0.6mm
- RoHS compliant

Applications:

- WLAN, 802.11a/b/g/n
- Bluetooth
- ISM Band

ELECTRICAL SPECIFICATIONS

| DESCRIPTION              | VALUE  |
|--------------------------|--|
| Pass Band                | 2400-2500 MHz                                      |
| Impedance                | 50 Ohm   |
| Insertion Loss           | 1.7 dB (Max) at 25°C<br>2.0 dB (Max) at -40~+85 °C |
| V.S.W.R<br>/ Return-Loss | 2.0 (Max)<br>/ 10.0 dB (Min)                       |
| Attenuation              | 30dB (Min). @880~915 MHz                           |
|                          | 25dB (Min). @1710~1785 MHz                         |
|                          | 25dB (Min). @1850~1910 MHz                         |
|                          | 25dB (Min). @4800~5000 MHz                         |
|                          | 25dB (Min). @7200~7500 MHz                         |
| Ripple                   | 0.50dB   |
| Operating Temperature    | -40~+85°C  |

In the effort to improve our products, we reserve the right to make changes judged to be necessary.

CONFIDENTIAL AND PROPRIETARY INFORMATION

This document contains confidential and proprietary information of Pulse Electronics, Inc. (Pulse) and is protected by copyright, trade secret and other state and federal laws. Its receipt or possession does not convey any rights to reproduce, disclose its contents, or to manufacture, use or sell anything it may describe. Reproduction, disclosure or use without specific written authorization of Pulse is strictly forbidden.

For more information:



Pulse Worldwide Headquarters  
15255 Innovation Drive #100  
San Diego, CA 92128  
USA  
Tel:1-858-674-8100

Pulse/Larsen Antennas  
18110 SE 34<sup>th</sup> St Bldg 2 Suite 250  
Vancouver, WA 98683  
USA  
Tel: 1-360-944-7551

Europe Headquarters  
Pulse GmbH & Do, KG  
Zeppelinstrasse 15  
Herrenberg, Germany  
Tel: 49 7032 7806 0

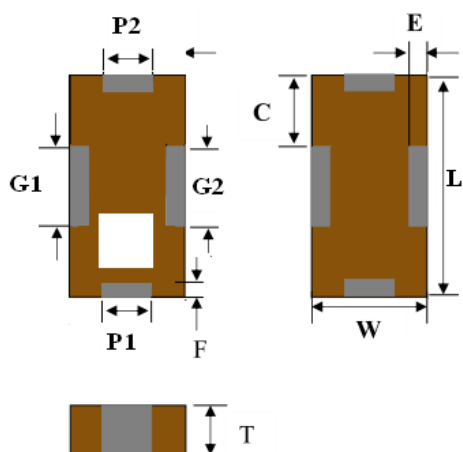
Pulse (Suzhou) Wireless Products Co, Inc.  
99 Huo Ju Road(#29 Bldg,4<sup>th</sup> Phase  
Suzhou New District  
Jiangsu Province, Suzhou 215009 PR China  
Tel: 86 512 6807 9998

Description: 1608 2.4G&2.5GHz Band Pass Filter

PART NUMBER: BPF1608LM02R2400A

MECHANICAL DIMENSION

Outline



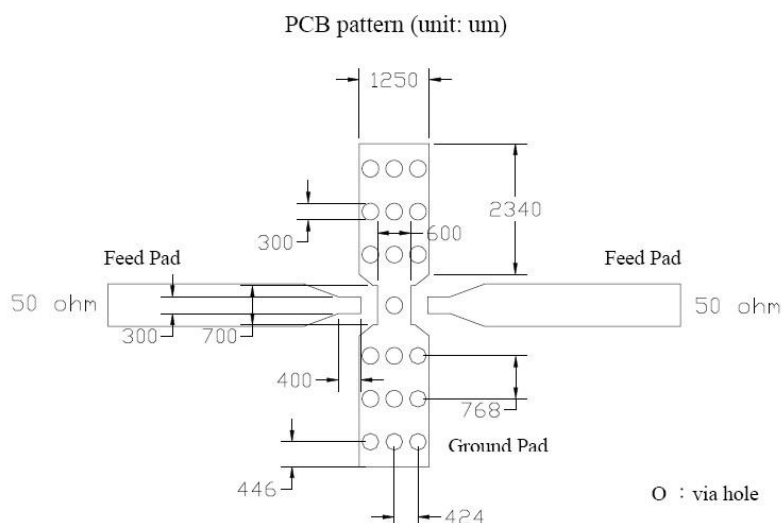
Termination

| Terminal name | Function |
|---------------|----------|
| P1            | Input    |
| P2            | Output   |
| G1            | GND      |
| G2            | GND      |

Mechanical

|        | Dimension |
|--------|-----------|
| L (mm) | 1.60±0.15 |
| W (mm) | 0.80±0.15 |
| T (mm) | 0.60±0.15 |
| P (mm) | 0.40±0.15 |
| C (mm) | 0.50±0.15 |
| G (mm) | 0.60±0.15 |
| E (mm) | 0.15±0.10 |
| F (mm) | 0.15±0.10 |

Reference design of EVB



Line width should be designed to match 50Ω characteristic impedance, depending on PCB material and thickness.

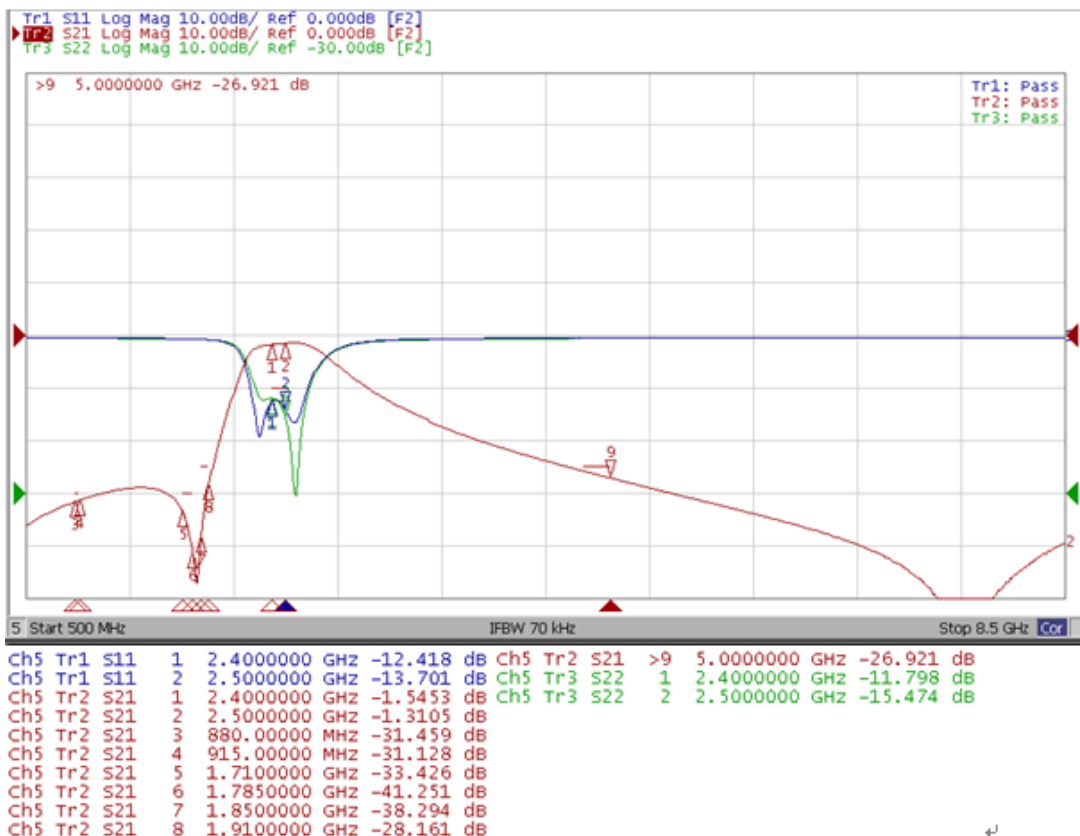
In the effort to improve our products, we reserve the right to make changes judged to be necessary.  
CONFIDENTIAL AND PROPRIETARY INFORMATION

This document contains confidential and proprietary information of Pulse Electronics, Inc. (Pulse) and is protected by copyright, trade secret and other state and federal laws. Its receipt or possession does not convey any rights to reproduce, disclose its contents, or to manufacture, use or sell anything it may describe. Reproduction, disclosure or use without specific written authorization of Pulse is strictly forbidden.

**Description: 1608 2.4G&2.5GHz Band Pass Filter**

**PART NUMBER: BPF1608LM02R2400A**

**ELECTRICAL PERFORMANCES**



- Measured on Agilent E5071C Network Analyzer
- Common port: Port 2(Return loss S22)
- Low band port: Port 1(Low band insertion loss S12, and attenuation at high band)
- High band port: Port 4(High band insertion loss S42, and attenuation at low band)

Frequency Characteristics

In the effort to improve our products, we reserve the right to make changes judged to be necessary.

CONFIDENTIAL AND PROPRIETARY INFORMATION

This document contains confidential and proprietary information of Pulse Electronics, Inc. (Pulse) and is protected by copyright, trade secret and other state and federal laws. Its receipt or possession does not convey any rights to reproduce, disclose its contents, or to manufacture, use or sell anything it may describe. Reproduction, disclosure or use without specific written authorization of Pulse is strictly forbidden.

**Description:** 1608 2.4G&2.5GHz Band Pass Filter

**PART NUMBER: BPF1608LM02R2400A**

### REVISION HISTORY

| Revision  | Date          | Description |
|-----------|---------------|-------------|
| Version 1 | Oct. 06, 2020 | - New issue |

## X-ON Electronics

Largest Supplier of Electrical and Electronic Components

*Click to view similar products for [Signal Conditioning category](#):*

*Click to view products by [Yageo manufacturer](#):*

Other Similar products are found below :

[MAPDCC0001](#) [MAPDCC0004](#) [PD0409J5050S2HF](#) [880157](#) [HHS-109-PIN](#) [DC1417J5005AHF](#) [AFS14A30-2185.00-T3](#) [AFS14A35-1591.50-T3](#) [DS-323-PIN](#) [B39321R801H210](#) [1A0220-3](#) [JP510S](#) [LFB212G45SG8C341](#) [LFB322G45SN1A504](#) [LFL182G45TC3B746](#) [SF2159E](#) [30057](#) [FM-104-PIN](#) [CER0813B](#) [MAPDCC0005](#) [3A325](#) [40287](#) [41180](#) [ATB3225-75032NCT](#) [BD0810N50100AHF](#) [C5060J5003AHF](#) [JHS-115-PIN](#) [JP503AS](#) [DC0710J5005AHF](#) [DC2327J5005AHF](#) [DC3338J5005AHF](#) [43020](#) [LFB2H2G60BB1C106](#) [LFL15869MTC1B787](#) [X3C19F1-20S](#) [XC3500P-20S](#) [10013-20](#) [SF2194E](#) [CDBLB455KCAX39-B0](#) [TGL2208-SM, EVAL](#) [RF1353C](#) [1E1305-3](#) [1F1304-3S](#) [1G1304-30](#) [B0922J7575AHF](#) [2020-6622-20](#) [10017-3](#) [TP-103-PIN](#) [BD1222J50200AHF](#) [BD1722J50100AHF](#)