

# DATA SHEET

## WIRELESS COMPONENTS

Band Pass Filter

BPF1608LM03R2400A

2.4 GHz

1608 Series



**FEATURES**

- Compact size design
- RoHS compliant

**APPLICATIONS**

- WLAN, 802.11a/n
- ISM Band

**ORDERING INFORMATION**

All part numbers are identified by the series, packing type, material, size, antenna type, working frequency and packing quantity.

**PART NUMBER**

**BPF 1608 LM 03 R 2400A**  
(1) (2) (3) (4) (5) (6)

---

**(1) PRODUCT**

BPF = Band Pass Filter

---

**(2) SIZE**

1608 = 1.60 × 0.8 mm

---

**(3) MATERIALS**

Material Code LM

---

**(4) TYPE**

03 = Type 03

---

**(5) PACKING STYLE**

R = Tape and Reel

---

**(6) WORKING FREQUENCY**

2400 = 2.4 GHz

**SPECIFICATION**

Table 1

DESCRIPTION	Value
<b>Pass Band</b>	2400 ~ 2500 MHz
<b>Insertion Loss</b>	1.5 dB (Max) at 25°C 2.0 dB (Max) at -40~85°C
<b>Return Loss</b>	10dB (Min.)
<b>Ripple</b>	0.50 dB
<b>Attenuation</b>	30 min. at 880 ~ 915 MHz 25 min. at 1710 ~ 1785 MHz 25 min. at 1850 ~ 1910 MHz 25 min. at 4800 ~ 5000 MHz 25 min. at 7200 ~ 7500 MHz
<b>Operating Temperature</b>	-40 ~ 85°C

**DIMENSIONS**

Table 2 Mechanical Dimension

	DIMENSION
L (mm)	1.60 ±0.15
W (mm)	0.80 ±0.15
T (mm)	0.60 ±0.15
P (mm)	0.40 ±0.15
C (mm)	0.55 ±0.15
G (mm)	0.60 ±0.15
E (mm)	0.15 ±0.10
F (mm)	0.15 ±0.10
L (mm)	1.60 ±0.15

**OUTLINES**

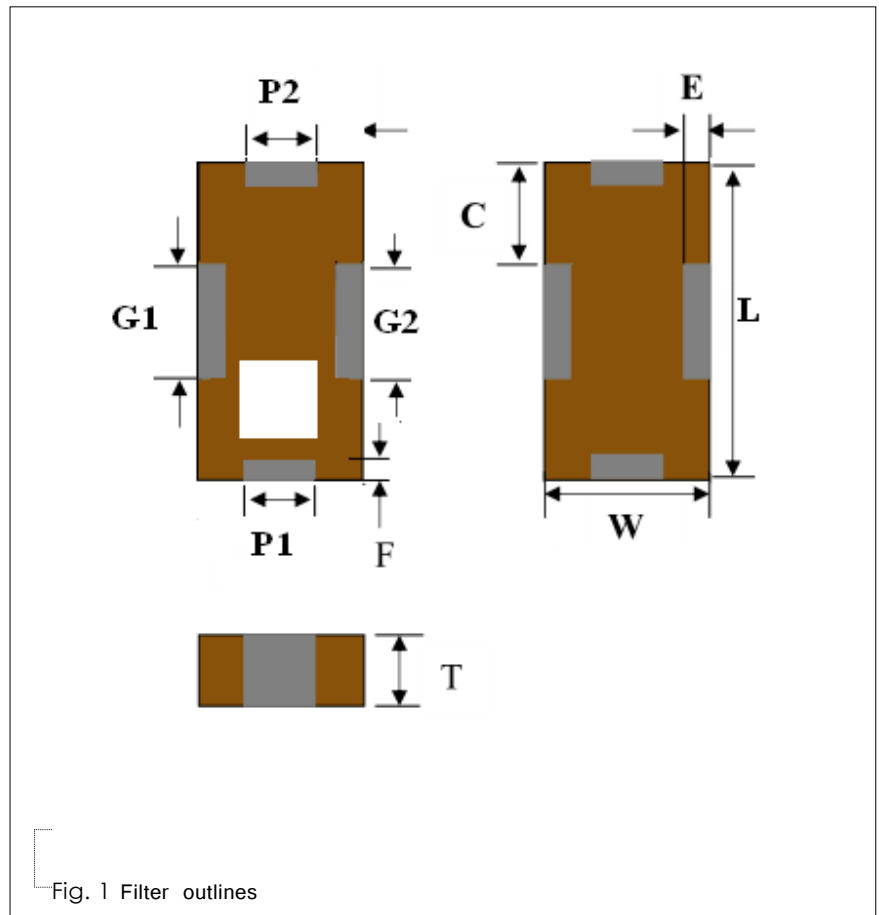
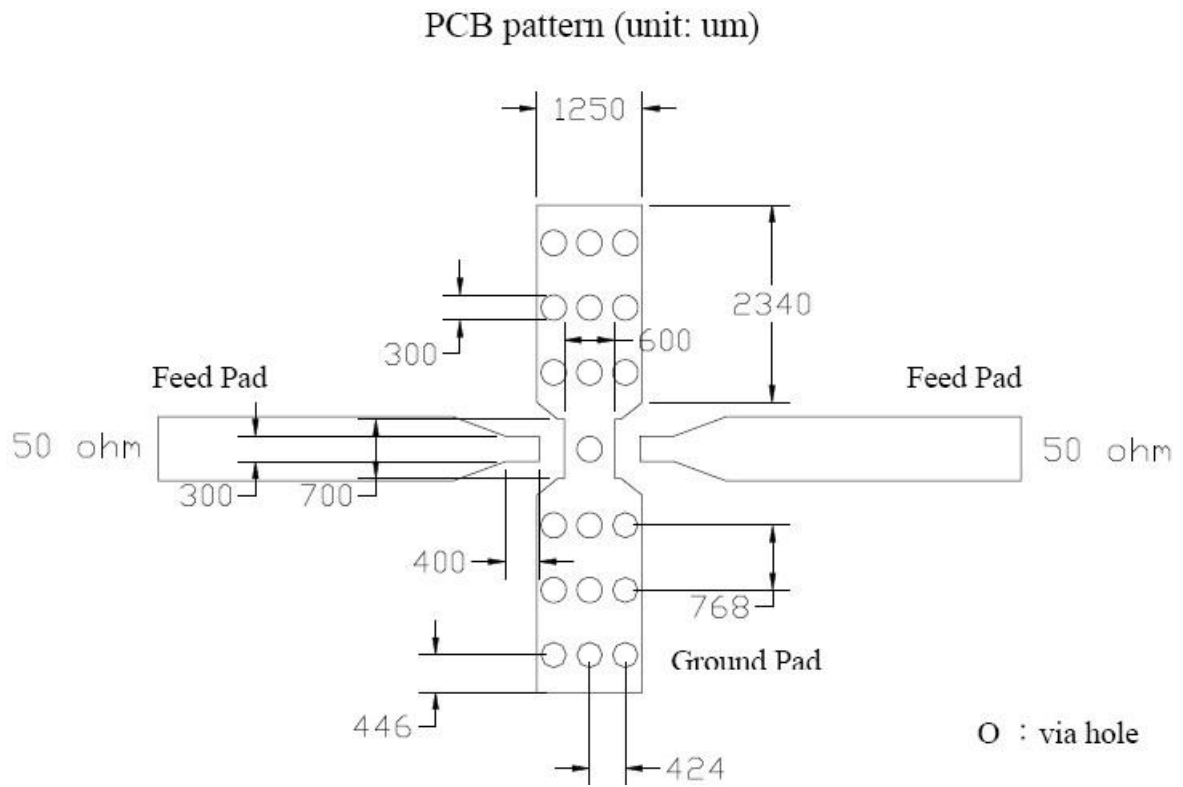


Fig. 1 Filter outlines

Table 3 Termination configuration

TERMINAL NAME	FUNCTION
P1	Input
P2	Output
P3	GND
P4	GND



Line width should be designed to match 50Ω characteristic impedance, depending on PCB material and thickness.

Fig. 2 Reference design of evaluation board

**ELECTRICAL PERFORMANCES**

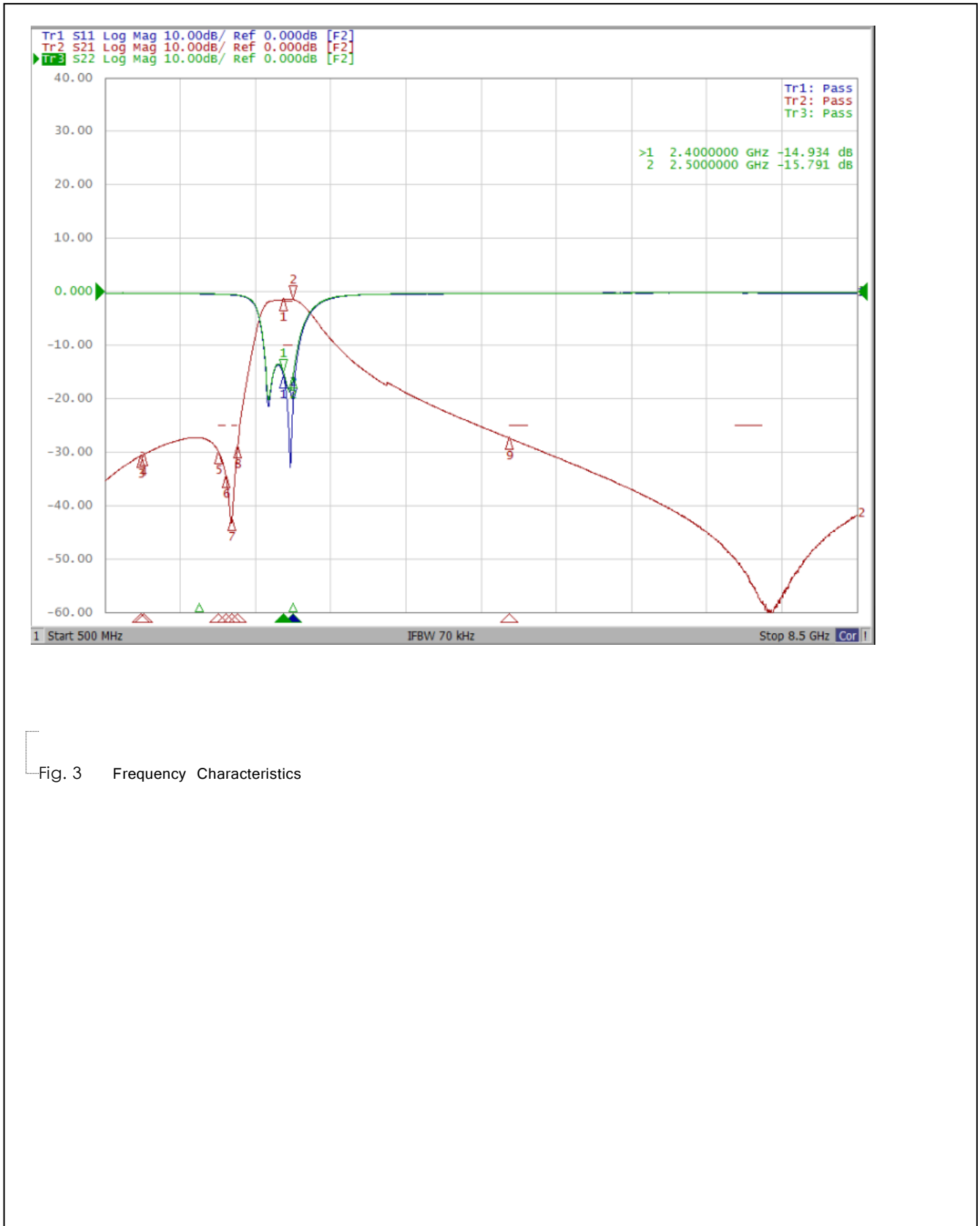


Fig. 3 Frequency Characteristics

REVISION HISTORY

<u>REVISION</u>	<u>DATE</u>	<u>CHANGE NOTIFICATION</u>	<u>DESCRIPTION</u>
Version 2	Oct. 16, 2020		- New data sheet for Band Pass Filter, 2.45 GHz application, 1608 series

## X-ON Electronics

Largest Supplier of Electrical and Electronic Components

*Click to view similar products for [Signal Conditioning category](#):*

*Click to view products by [Yageo manufacturer](#):*

Other Similar products are found below :

[PD0409J5050S2HF](#) [HHS-109-PIN](#) [AFS14A35-1591.50-T3](#) [JP510S](#) [LFB322G45SN1A504](#) [SF2159E](#) [FM-104-PIN](#) [CER0813B](#)  
[MAPDCC0005](#) [3A325](#) [BD0810N50100AHF](#) [DC0710J5005AHF](#) [DC2327J5005AHF](#) [LFL15869MTC1B787](#) [X3C19F1-20S](#)  
[CDBLB455KCAX39-B0](#) [RF1353C](#) [051157-0000](#) [PD0922J5050D2HF](#) [600S150FTRB](#) [1E1305-3](#) [1F1304-3S](#) [TP-103-PIN](#)  
[BD1222J50200AHF](#) [BD1722J50100AHF](#) [2450DP39K5400E](#) [BD0810J50150AHF](#) [BD1722J50200AHF](#) [DS-327-PIN](#) [MACP-008125-](#)  
[CK07F0](#) [DS-329-PIN](#) [DS-313-PIN](#) [TP-104-PIN](#) [TP-101-PIN](#) [HH-128-PIN](#) [8594810000](#) [T-1000-N](#) [JP506S](#) [XC0900P-10S](#) [XC0900B-30S](#)  
[CHE1260-QAG](#) [11305-10](#) [5962-9091202MXA](#) [3A412S](#) [X3C06A4-03S](#) [B39000Z3410A4](#) [DSS-333-PIN](#) [PD2425J5050S2HF](#)  
[B39242B4360P810](#) [B39781B8005P810](#)