

DATA SHEET

WIRELESS COMPONENTS

Diplexer
DPX1608LL85R2455A

2.4 AND 5 GHZ
I608 Series



FEATURES

- Compact size design
- RoHS compliant

APPLICATIONS

- WLAN, 802.11a/b/g/n
- ISM Band

ORDERING INFORMATION

All part numbers are identified by the series, packing type, material, size, antenna type, working frequency and packing quantity.

PART NUMBER

DPX 1608 LL 85 R 2455A
 (1) (2) (3) (4) (5) (6)

(1) PRODUCT

DPX = Diplexer

(2) SIZE

1608 = 1.6 × 0.8 mm

(3) MATERIALS

Material Code LL

(4) TYPE

85 = Type 85

(5) PACKING STYLE

R = Tape and Reel

(6) WORKING FREQUENCY

2455 = 2.4/5GHz

PHYCOMP CTC

CFL4111715852524K

I2NC

411171585252

SPECIFICATION

Table 1

DESCRIPTION	VALUE	
Pass Band	Low Band	High Band
	2400~2500MHz	4900~6000MHz
Insertion loss	0.7dB (Max) at 25°C	0.8dB (Max) at 25°C
Return-Loss	10.0dB(Min)	12.0dB(Min)
Attenuation	20dB(Min).@4.8~5GHz 20dB(Min).@7.2~7.5GHz	28dB(Min).@860~960MHz 23dB(Min).@1545~1605MHz 23dB(Min).@1710~1990GHz 28dB(Min).@2.17GHz 8dB(Min).@8.1GHz 15dB(Min).@8.82~9.8GHz 27dB(Min).@9.8~11.8GHz
Isolation	Middle Band to High Band: 20dB (Min). @4.9~5.95GHz	
Operating Temperature	-40 ~ 85°C	
Dimension	1.6 x 0.8 x0.6mm	

DIMENSIONS

Table 2 Machinical Dimension

	DIMENSION
L (mm)	1.60±0.15
W (mm)	0.80±0.15
T (mm)	0.60±0.15
P1 (mm)	0.20±0.15
P2 (mm)	0.20±0.15
P3 (mm)	0.20±0.15
P4 (mm)	0.20±0.15
P5 (mm)	0.20±0.15
P6 (mm)	0.20±0.15
D1 (mm)	0.20±0.15
D2 (mm)	0.30±0.10
D3 (mm)	0.15±0.10

OUTLINES

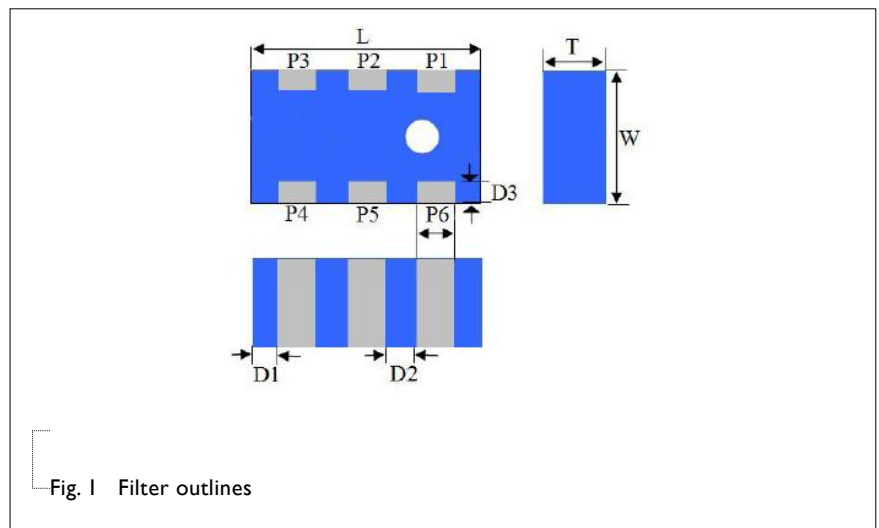


Fig. 1 Filter outlines

Table 3 Termination configuration

TERMINAL NAME	FUNCTION
P1	High band port
P2	Ground
P3	Low band port
P4	Ground
P5	Common port
P6	Ground

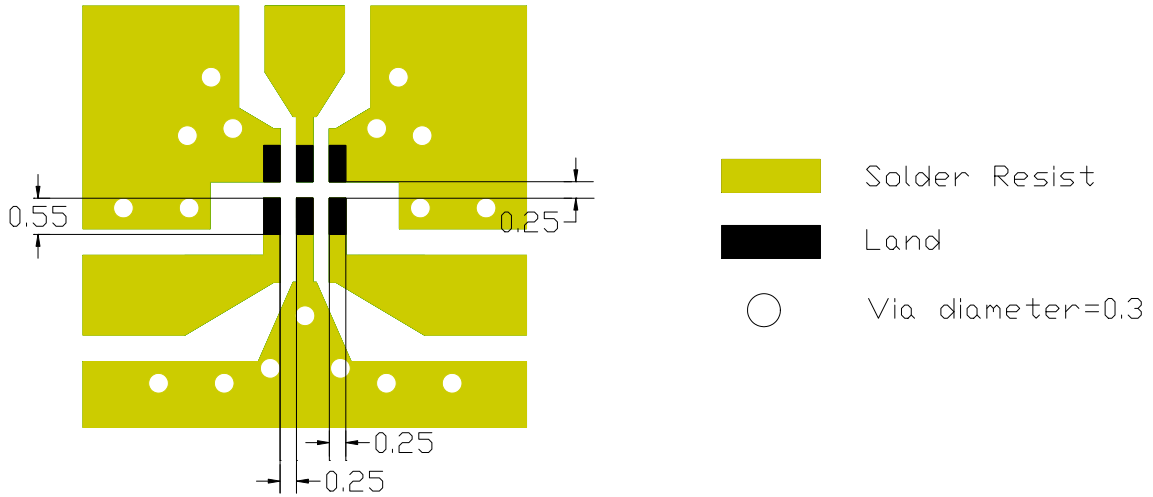
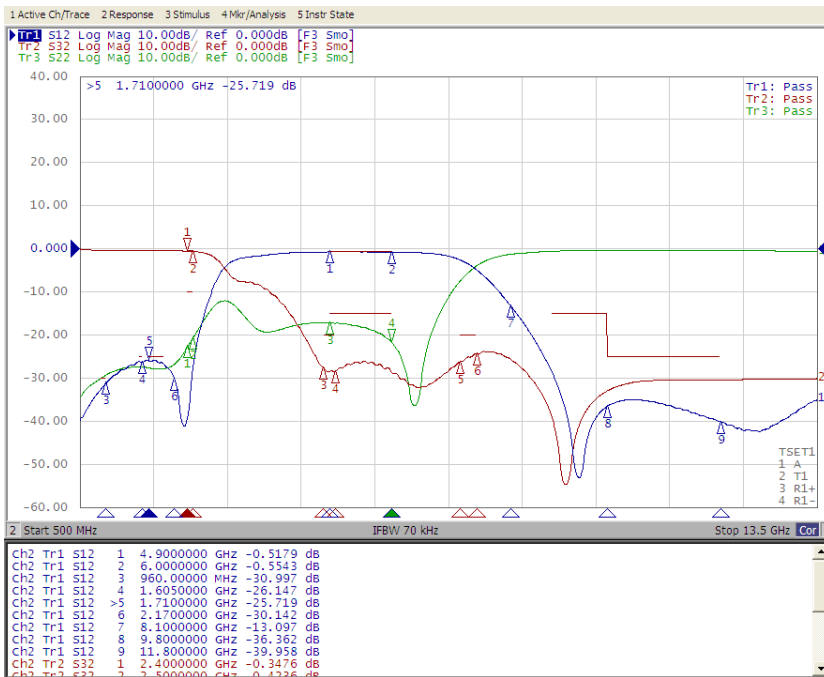


Fig.2 Reference design of evaluation board

ELECTRICAL PERFORMANCES



- Measured on Agilent E5071C Network Analyzer
- Common port: Port 2 (Return loss S22)
- Low band port: Port 3 (Low band insertion loss S32, and attenuation at high band)
- High band port: Port 1 (High band insertion loss S12, and attenuation at low band)

Fig.3 Frequency Characteristics

REVISION HISTORY

REVISION	DATE	CHANGE NOTIFICATION	DESCRIPTION
Version 3	May 11, 2018	-	- Update termination function
Version 2	Aug. 18, 2014	-	- Update specification
Version 1	Aug. 05, 2014	-	- Update Attenuation

X-ON Electronics

Largest Supplier of Electrical and Electronic Components

Click to view similar products for [Antennas category](#):

Click to view products by [Yageo manufacturer](#):

Other Similar products are found below :

[CCT FM1](#) [ABFT](#) [AD-NM-SMAF 001-0021](#) [CTC110](#) [MAF94149](#) [EXE902SF](#) [MMCX-SMA-100](#) [PDQ24496-91NF](#) [GAN30084EU](#) [930-033-R](#) [A08-HABUF-P5I](#) [AAF95035](#) [DG-ANT-20DP-BG-B](#) [APAMPGJ-141](#) [1513563-1](#) [OF86315-FNF](#) [OP24516DS-91NM](#) [A09-HASM-7](#) [EXE902MD](#) [EXE902SM](#) [SPDA17806/2170LAR](#) [APAMPG-117](#) [GPS1575SP26-004](#) [GPS15MGSMA](#) [CMD69273P-30NF](#) [CMQ69273-30NF](#) [RD2458-5-OTDR-NM](#) [RD2458-5-RSMA](#) [TRAB24/49003](#) [W4120ER5000](#) [W6102B0100](#) [YE572113-30RSMM](#) [108-00014-50](#) [SPDA17RP918](#) [OP24516SX-91NM](#) [OP24516SX-91RSMM](#) [CMQ69273P-30NF](#) [CMS69273-30NF](#) [CMS69273P-30NF](#) [TRAB24003N](#) [TRAB24003NP](#) [TRAB8213NP](#) [TRAB8903](#) [A09-Y8NF](#) [A09-Y11NF](#) [A09-HSM-7](#) [A09-F8NF-M](#) [A09-F5NF-M](#)