

# DATA SHEET

## WIRELESS COMPONENTS

Low Pass Filter  
LPF1005LM55R0709A

0.7-0.9 GHz  
1005 Series



**FEATURES**

- Compact size design
- RoHS compliant

**APPLICATIONS**

- LTE(0.7-2.7GHz)

**ORDERING INFORMATION**

All part numbers are identified by the series, packing type, material, size, antenna type, working frequency and packing quantity.

**PART NUMBER**

**LPF 1005 LM 55 R 0709A**  
(1) (2) (3) (4) (5) (6)

---

**(1) PRODUCT**

LPF = Low Pass Filter

---

**(2) SIZE**

1005 = 1.0 × 0.5

---

**(3) MATERIALS**

Material Code LM

---

**(4) TYPE**

55 = Type 55

---

**(5) PACKING STYLE**

R = Tape and Reel

---

**(6) WORKING FREQUENCY**

0709 = 0.7-0.9 GHz

**SPECIFICATION**

Table 1

| DESCRIPTION            | Value  |
|------------------------|--|
| Pass Band              | 698 ~ 960 MHz  |
| Impedance              | 50Ω  |
| Insertion Loss         | 0.7dB (Max) at 25°C  |
| V.S.W.R. / Return Loss | 2.0 (Max) / 10dB (Min.)  |
| Attenuation            | 13 dB Min. @ 1554 ~ 1610 MHz<br>35 dB Min. @ 1805 ~ 1830 MHz<br>35 dB Min. @ 2110 ~ 2170 MHz<br>30 dB Min. @ 1710 ~ 2700 MHz |
| Operating Temperature  | -40 ~ 85°C   |

**DIMENSIONS**

Table 2 Mechanical

|         | DIMENSION   |
|---------|-------------|
| L (mm)  | 1.000 ±0.15 |
| W (mm)  | 0.500 ±0.15 |
| T (mm)  | 0.350 ±0.10 |
| D1 (mm) | 0.050 ±0.05 |
| D2 (mm) | 0.180 ±0.10 |
| D3 (mm) | 0.180 ±0.10 |
| E1 (mm) | 0.050 ±0.05 |
| E2 (mm) | 0.125 ±0.10 |
| E3 (mm) | 0.150 ±0.10 |

**OUTLINES**

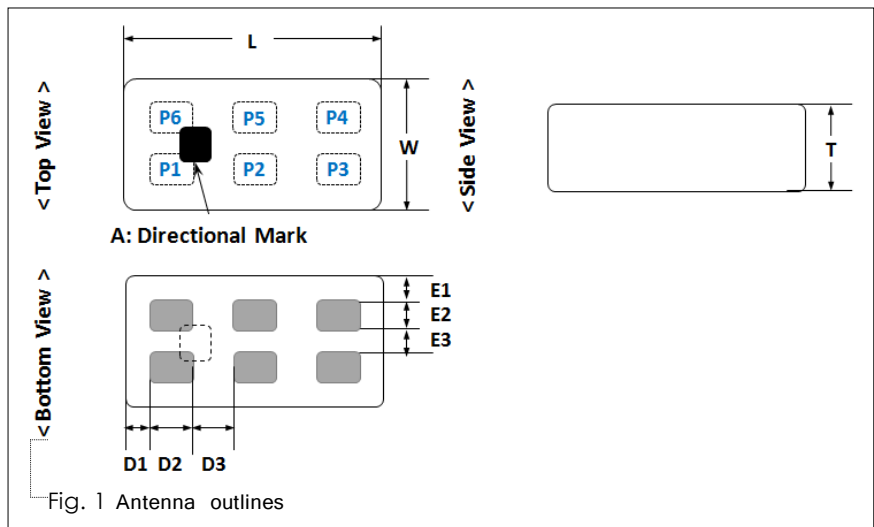
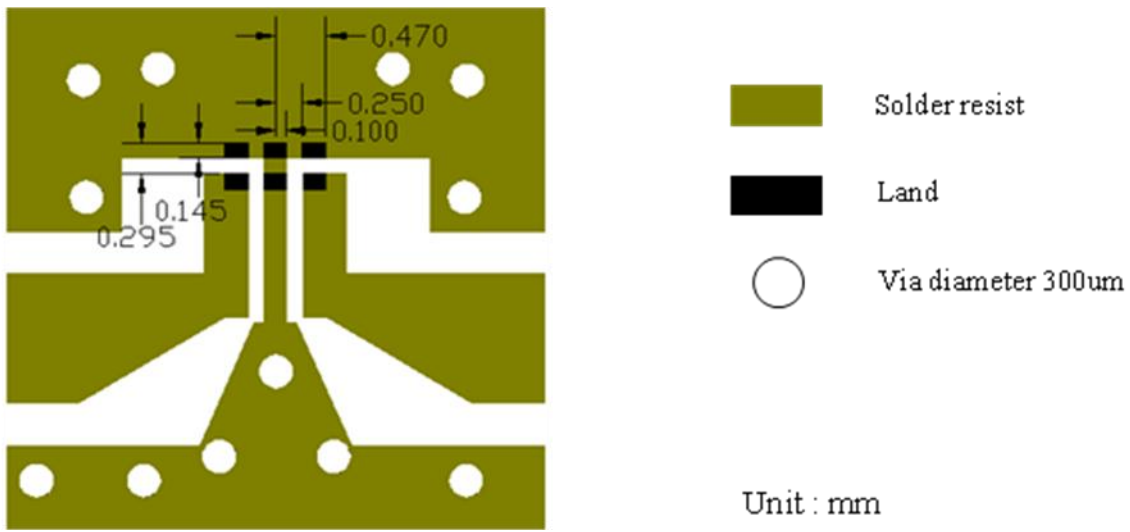


Table 3 Termination configuration

| TERMINAL NAME | FUNCTION |
|---------------|----------|
| (1)           | NC       |
| (2)           | GND      |
| (3)           | NC       |
| (4)           | In/Out   |
| (5)           | GND      |
| (6)           | Out/In   |



Line width should be designed to match 50Ω characteristic impedance, depending on PCB material and thickness.

Fig. 2 Reference design of evaluation board

**ELECTRICAL PERFORMANCES**

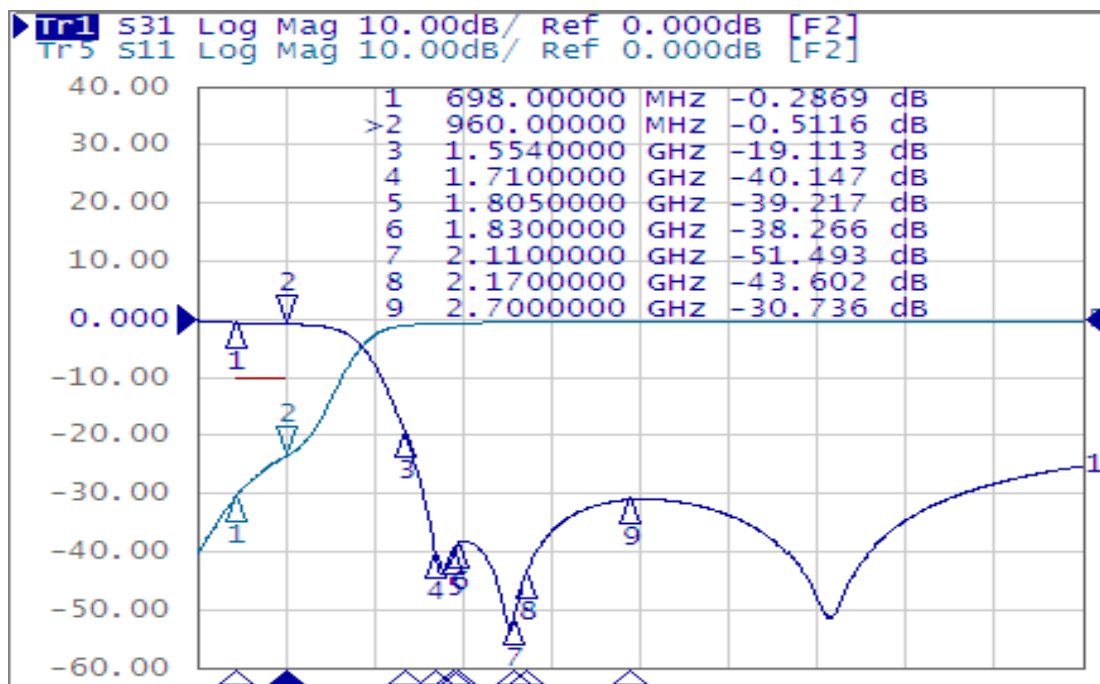


Fig. 3 Frequency Characteristics

REVISION HISTORY

| REVISION  | DATE         | CHANGE NOTIFICATION | DESCRIPTION  |
|-----------|--------------|---------------------|--|
| Version 2 | Sep.29, 2020 | -                   | - New data sheet for Low Pass Filter, 0.7-0.9 GHz application, 1005 series |

## X-ON Electronics

Largest Supplier of Electrical and Electronic Components

*Click to view similar products for [Signal Conditioning category](#):*

*Click to view products by [Yageo manufacturer](#):*

Other Similar products are found below :

[MAPDCC0001](#) [MAPDCC0004](#) [PD0409J5050S2HF](#) [HHS-109-PIN](#) [AFS14A35-1591.50-T3](#) [DS-323-PIN](#) [JP510S](#) [LFB322G45SN1A504](#)  
[SF2159E](#) [FM-104-PIN](#) [CER0813B](#) [MAPDCC0005](#) [3A325](#) [BD0810N50100AHF](#) [JHS-115-PIN](#) [DC0710J5005AHF](#) [DC2327J5005AHF](#)  
[LFB2H2G60BB1C106](#) [LFL15869MTC1B787](#) [X3C19F1-20S](#) [XC3500P-20S](#) [CDBLB455KCAX39-B0](#) [RF1353C](#) [051157-0000](#)  
[PD0922J5050D2HF](#) [600S150FTRB](#) [1E1305-3](#) [1F1304-3S](#) [1G1304-30](#) [2020-6622-20](#) [TP-103-PIN](#) [BD1222J50200AHF](#) [BD1722J50100AHF](#)  
[2450DP39K5400E](#) [BD1722J50200AHF](#) [DSS-113-PIN](#) [MACP-008125-CK07F0](#) [DS-329-PIN](#) [DS-313-PIN](#) [M38510/10304BCA](#) [TP-104-PIN](#)  
[856019](#) [JP506S](#) [XC0900P-10S](#) [XC0900B-30S](#) [CHS-134-PIN](#) [CHE1260-QAG](#) [11305-10](#) [5962-9091202MXA](#) [3A412S](#)