

# DATA SHEET

## WIRELESS COMPONENTS

Triplexer  
TPX2012LL95R1525A

1.57/2.4/5 GHz  
2012 Series



FEATURES

- Compact size design
- RoHS compliant

APPLICATIONS

- WLAN, 802.11a/b/g/n
- ISM Band
- GPS

ORDERING INFORMATION

All part numbers are identified by the series, packing type, material, size, antenna type, working frequency and packing quantity.

**PART NUMBER**

**TPX 2012 LL 95 R 1525A**  
 (1) (2) (3) (4) (5) (6)

---

**(1) PRODUCT**

TPX = Triplexer

---

**(2) SIZE**

2012 = 2.0 × 1.2 mm

---

**(3) MATERIALS**

Material Code LL

---

**(4) TYPE**

95 = Type 95

---

**(5) PACKING STYLE**

R = Tape and Reel

---

**(6) WORKING FREQUENCY**

1525 = 1.57/2.4/5GHz

---

**PHYCOMP CTC**

CFL4111714951254K

---

**I2NC**

411171495125

---

**SPECIFICATION**

Table 1

DESCRIPTION	VALUE		
	Low Band	Middle Band	High Band
Pass Band	1570~1610MHz	2400~2500MHz	4900~5950MHz
Insertion loss	0.8dB (Max) at 25°C	0.7dB (Max) at 25°C	0.8dB (Max) at 25°C
V.S.W.R /Return-Loss	2.0(Max)/10.0dB(Min)	2.0(Max) /10.0dB(Min)	1.6(Max) /13.0dB(Min)
Attenuation	20dB(Min).@2.4~2.5GHz 20dB(Min).@4.8~6.0GHz	17.5dB(Min).@4.8~5.0GHz 10dB(Min).@7.2~7.5GHz 10dB(Min).@9.6~10.0GHz	27dB(Min).@0.86~0.96GHz 25dB(Min).@1.545~1.605GHz 25dB(Min).@1.71~1.99GHz 30dB(Min).@2.17GHz 8dB(Min).@8.1GHz 15dB(Min).@8.82~9.8GHz 27dB(Min).@9.8~10.76GHz 25dB(Min).@10.76~11.8GHz
Isolation	Middle Band to High Band: 17dB(Min). @4.8~5.0GHz Middle Band to Low Band: 20dB(Min).@1.559~1.606GHz High Band to Low Band: 25dB(Min). @1.559~1.606GHz		
Operating Temperature	-40 ~ 85°C		
Dimension	2.0 x 1.2 x 0.9mm		

**DIMENSIONS**

Table 2 Machinical Dimension

	DIMENSION
L (mm)	2.00±0.15
W (mm)	1.25±0.15
T (mm)	0.9±0.15
P1 (mm)	0.4±0.15
P2 (mm)	0.4±0.15
P3 (mm)	0.4±0.15
P4 (mm)	0.5±0.15
P5 (mm)	0.4±0.15
P6 (mm)	0.4±0.15
P7 (mm)	0.4±0.15
P8 (mm)	0.5±0.15
D1 (mm)	0.2±0.15
D2 (mm)	0.65±0.15
D3 (mm)	0.35±0.15
D4 (mm)	0.3±0.15

**OUTLINES**

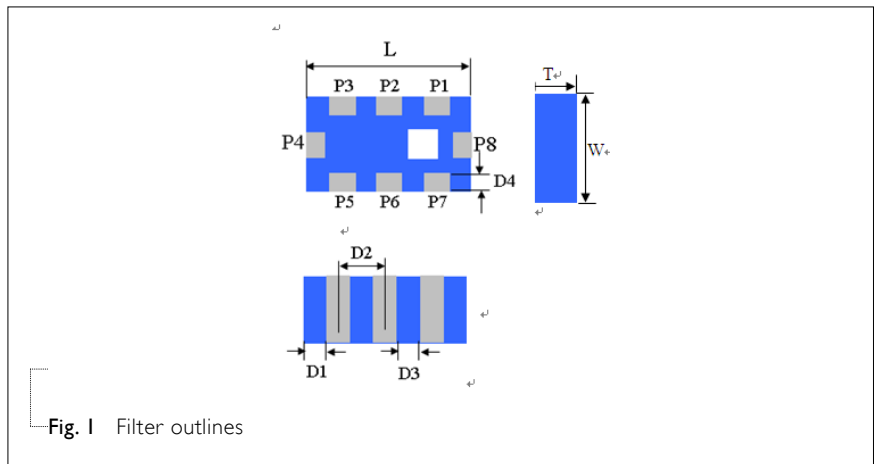


Fig. 1 Filter outlines

Table 3 Termination configuration

TERMINAL NAME	FUNCTION
P1	Ground
P2	Common port
P3	Ground
P4	Low band port
P5	Ground
P6	High band port
P7	Ground
P8	Middle band port

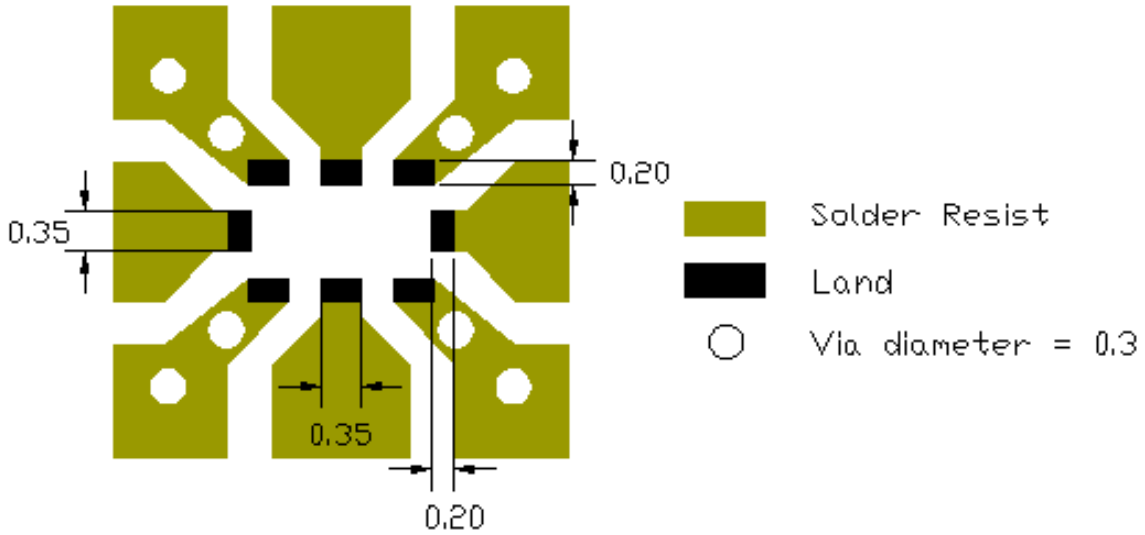
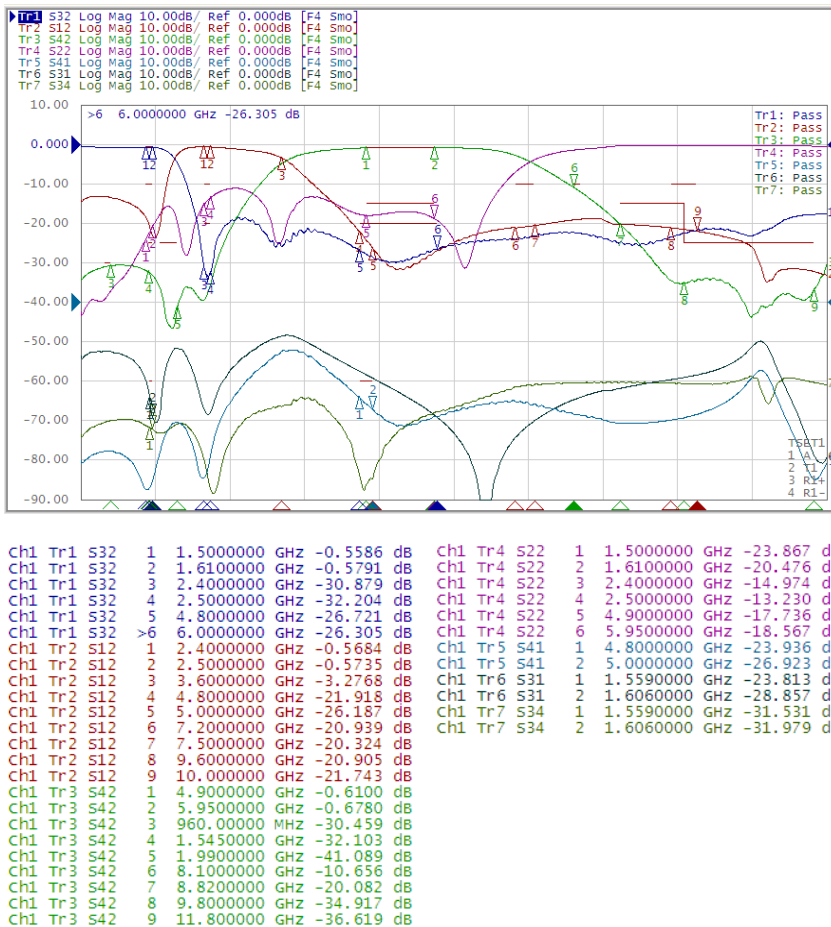


Fig. 2 Reference design of evaluation board

**ELECTRICAL PERFORMANCES**



- Measured on Agilent E5071C Network Analyzer
- Common port: Port 2 (Return loss S22)
- Low band port: Port 3 (Low band insertion loss S32)
- Middle band port Port1 (Middle band insertion loss S12)
- High band port: Port 4 (High band insertion loss S42)

Fig. 3 Frequency Characteristics

REVISION HISTORY

REVISION	DATE	CHANGE NOTIFICATION	DESCRIPTION
----------	------	---------------------	-------------

Version 1	Aug. 05, 2014		- New data sheet of Triplexer
-----------	---------------	--	-------------------------------

## X-ON Electronics

Largest Supplier of Electrical and Electronic Components

*Click to view similar products for [Common Mode Chokes / Filters](#) category:*

*Click to view products by [Yageo](#) manufacturer:*

Other Similar products are found below :

[PE-64683](#) [RD5122-6-9M6](#) [ST6118T-R](#) [FE3X025-10-7NL](#) [T8114NLT](#) [TCM0806G-350-2P-T](#) [TCM0806G-650-2P-T](#) [IND-0110](#)  
[UAL21VR0802000](#) [UALSC023000000](#) [UALSC1020JH000](#) [UALSU9VD070100](#) [36-00037](#) [CM7060M132R-10](#) [UALW21HS072450](#)  
[UALSU9H0208000](#) [UAL24VK06450CH](#) [PLT10HH501100PNB](#) [PLT10HH401100PNB](#) [PLT10HH1026R0PNB](#) [PE-67531](#) [TLH10UB](#) [113](#)  
[0R5](#) [2752045447](#) [CM8663Z161B-10](#) [7351V](#) [CMF16-153131](#) [T8116NLT](#) [CMS2-10-R](#) [FE2X10-4-2NL](#) [T8003NLT](#) [CTX66-19521-R](#)  
[RC212-0.5-10M](#) [RC112-0.4-15M](#) [RC212-0.6-6M8](#) [RC212-0.4-15M](#) [RC112-0.3-30M](#) [4534-3](#) [WTCF2012Z0M751PB](#) [PH9408.814NLT](#)  
[B82498B3221J000](#) [PAC6006.364NLT](#) [PAC6006.444NLT](#) [PAC6006.204NLT](#) [PH9407.204NLT](#) [PAC6006.264NLT](#) [PH9408.105NLT](#)  
[PH9408.494NLT](#) [PAC6006.104NLT](#) [CM6350R-683-REEL](#) [CUW43T-513T-AU](#)