

1. SCOPE

This specification shall cover the characteristics of 1-port SAW resonator with used for remote-control security.

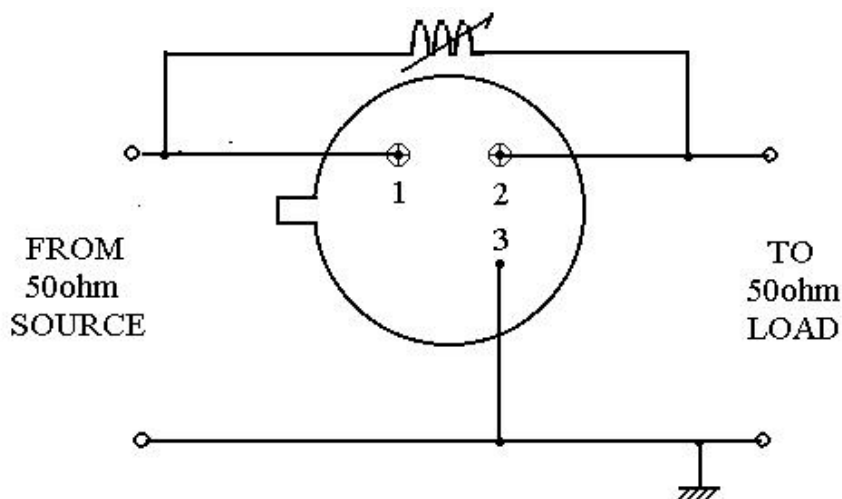
2. ELECTRICAL SPECIFICATION

DC Voltage VDC	10V
AC Voltage Vpp	10V50Hz/60Hz
Operation temperature	-40°C to +85°C
Storage temperature	-45°C to +85°C
RF Power Dissipation	0dBm

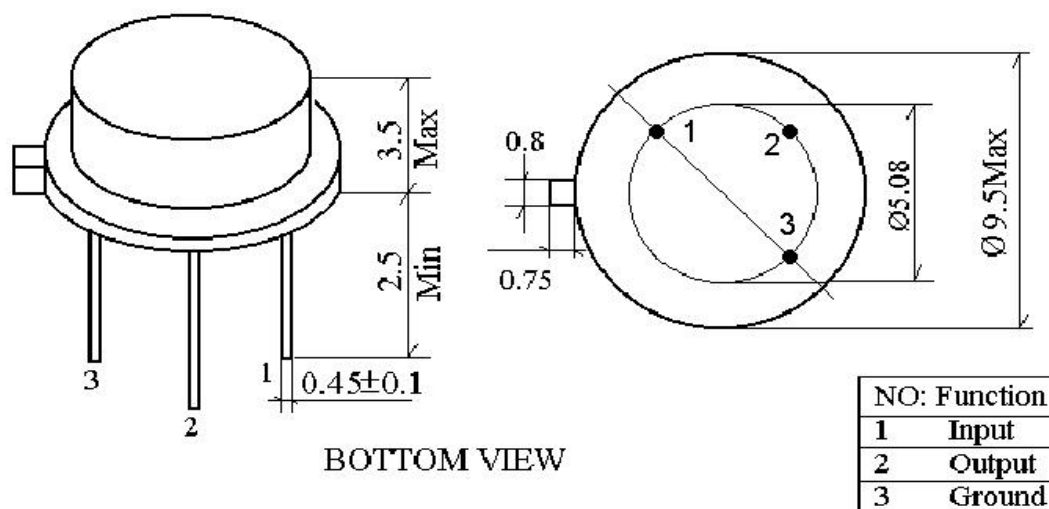
2.2 Electronic Characteristics

Item	Unites	Minimum	Typical	Maximum	
Center Frequency	MHz	433.845	433.920	433.995	
Insertion Loss	dB		1.5	2.5	
Quality Factor Unload Q		5000	12800		
50 Ω Loaded Q		1000	2000		
Temperature	Turnover Temperature	°C	10	25	40
Stability	Freq.temp.Coefficient	ppm/°C ²		0.032	
Frequency Aging	ppm/yr		< \pm 10		
DC. Insulation Resistance	M Ω	1.0			
RF Equivalent RLC Model	Motional Resistance R1	Ω	19	26	
	Motional Inductance L1	μ H	92.929		
	Motional Capacitance C1	fF	1.4475		
Transducer Static Capacitance	pF		1.95		

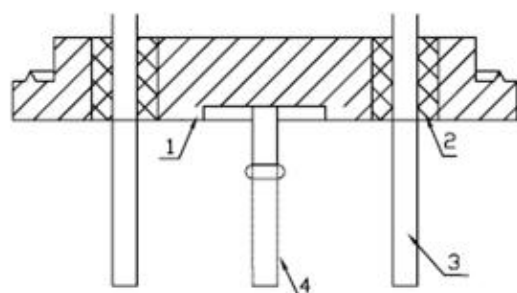
3. TEST CIRCUIT



4. DIMENSION



4.2 Materials



序号	名称	材质	数量
1	基座材料	SPCC	1
2	绝缘体材料	玻璃粉	2
3	引出脚材料	4J29	4
4	引出脚搪锡	Tin 与引脚距离-0.8mm	4
	基座电镀	Ni $>2.5\mu\text{m}$	1

5. ENVIRONMENTAL CHARACTERISTICS

5-1 High temperature exposure

Subject the device to $+85^{\circ}\text{C}$ for 16 hours. Then release the resonator into the room conditions for 24 hours prior to the measurement. It shall fulfill the specifications in 2.2.

5-2 Low temperature exposure

Subject the device to -40°C for 16 hours. Then release the device into the room conditions for 24 hours prior to the measurement. It shall fulfill the specifications in 2.2.

5-3 Temperature cycling

Subject the device to a low temperature of -45°C for 30 minutes. Following by a high temperature of $+85^{\circ}\text{C}$ for 30 Minutes. Then release the device into the room conditions for 24 hours prior to the measurement. It shall meet the specifications in 2.2.

5-4 Resistance to solder heat

Dip the device terminals no closer than 1.5mm into the solder bath at $260^{\circ}\text{C} \pm 10^{\circ}\text{C}$ for 10 ± 1 sec. Then release the device into the room conditions for 4 hours. The device shall meet the specifications in 2.2.

5-5 Solderability

Subject the device terminals into the solder bath at $245^{\circ}\text{C} \pm 5^{\circ}\text{C}$ for 5s, More than 95% area of the terminals must be covered with new solder. It shall meet the specifications in 2.2.

5-6 Mechanical shock

Drop the device randomly onto the concrete floor from the height of 1m 3 times. the device shall fulfill the specifications in 2.2.

5-7 Vibration

Subject the device to the vibration for 1 hour each in x,y and z axes with the amplitude of 1.5 mm at 10 to 55 Hz. The device shall fulfill the specifications in 2.2.

6. REMARK

6.1 Static voltage

Static voltage between signal load & ground may cause deterioration & destruction of the component. Please avoid static voltage.

6.2 Ultrasonic cleaning

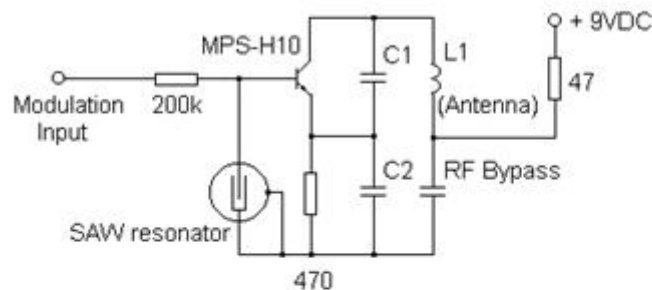
Ultrasonic vibration may cause deterioration & destruction of the component. Please avoid ultrasonic cleaning

6.3 Soldering

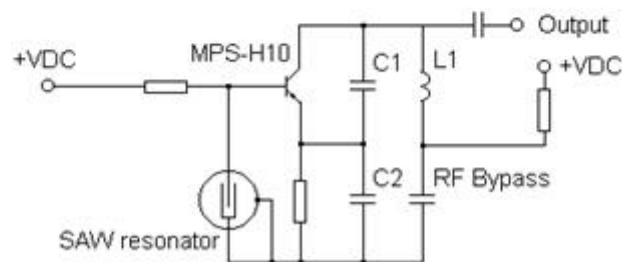
Only leads of component may be soldered. Please avoid soldering another part of component.

7. TYPICAL APPLICATION CIRCUITS

Typical low-power Transmitter Application



Typical Local Oscillator Application



X-ON Electronics

Largest Supplier of Electrical and Electronic Components

Click to view similar products for [SAW Oscillators](#) category:

Click to view products by [Yajingxin](#) manufacturer:

Other Similar products are found below :

[XG-2102CA 100.0000M-LGPAL3](#) [XG-2102CA 156.2500M-LGPAL3](#) [CCSO-914XL-500.000](#) [XG-2102CA 125.0000M-PHPA](#) [SK3530H](#)
[B21D339210A010CT](#) [CVS575-500.000](#) [TARD433.92M3TO39](#) [EG-2121CA 100.0000M-LHPAB](#) [EG-2121CA 125.0000M-LGPNB](#) [EG-](#)
[2121CA 125.0000M-LHPAB](#) [EG-2121CA 125.0000M-PHPAL3](#) [CVCSO-914-1000](#) [CCSO-914X-1000](#) [CVCSO-914XL-1000.000](#) [S1614E-](#)
[25.0000\(T\)](#) [EG-2121CA 100.0000M-LGPAL3](#) [EG-2121CA 125.0000M-LGRNLX](#) [EG-2121CA 125.0000M-LHPAL3](#) [EG-2121CA](#)
[200.0000M-LHPAB](#) [EG-2121CA 200.0000M-LHPAL3](#) [EG-2121CA 200.0000M-PHPAL3](#) [EG-2121CA 212.5000M-PHPAB](#) [EG-2121CA](#)
[312.5000M-LGPAB](#) [EG-2121CA 200.0000M-LGPAB](#) [XG-2102CA 312.5000M-LGRN](#) [XG-2102CA 200.0000M-LHPA](#) [VS-705-ECE-](#)
[KAAN-155M520000](#) [VS-705-ECE-KAAN-983M040000](#) [VS-705-ECE-SAAN-125M000000](#)