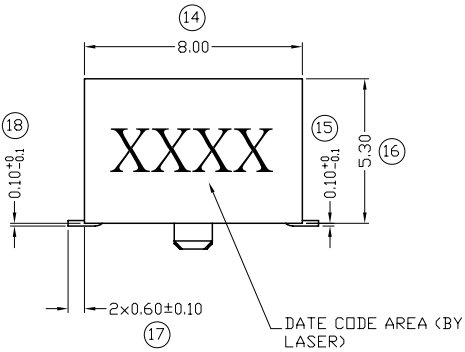
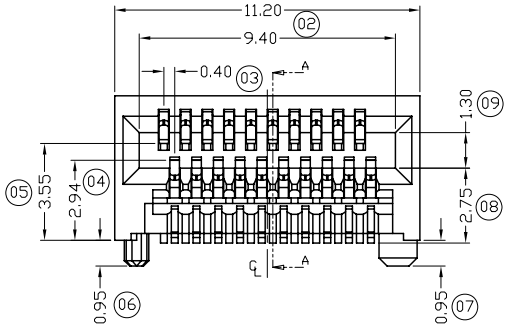
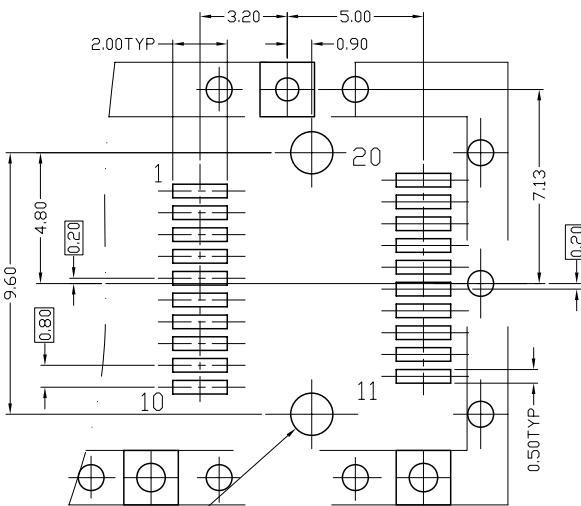
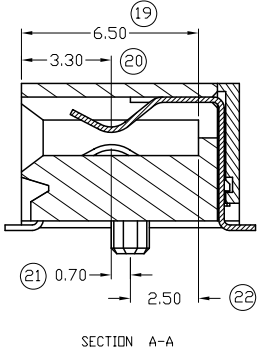
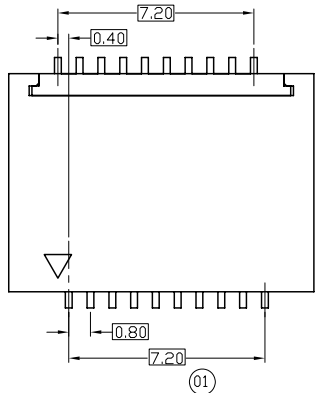
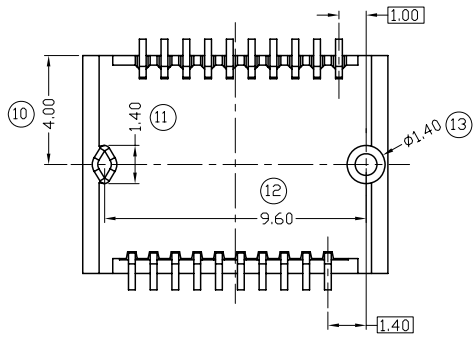


REVISION DESCRIPTION		APP.	DRW.	DATE	CHANGE No.
△ x 1	Change the note	H.T.	O.S.	11/24/25	DC15-0051
△ x					
△ x					



SFP PCB LAYOUT
2xφ1.55±0.05

SPECIFICATIONS
MATERIALS AND FINISHES:
 INSULATOR: THERMOPLASTIC, UL94 V-0.
 CONTACTS: COPPER ALLOY.
 FUNCTION AREA PLATING: Au 15u" OVER Ni; TAIL AREA PLATING: Sn OVER Ni.
MECHANICAL:
 DURABILITY: 250 CYCLES
 INSERTION/EXTRACTON FORCE: 40N MAX. / 11.5N MAX.
PHYSICAL:
 OPERATING TEMPERATURE: -55°C TO +85°C
ELECTRICAL:
 CONTACT RESISTANCE: 20m Ohms MAX.
 VOLTAGE RATING: 30V AC RMS MAX.
 INSULATION RESISTANCE: 1000M Ohms Min.
 CURRENT RATING: 0.5 A MAX.
 RoHS DIRECTIVE COMPLIANCE<LEAD-FREE> REFLOW CAPABLE TO 260±10°C,10SEC



General Tolerances (Unless Specified)	
4 Place	±0.30
3 Place	±0.10
2 Place	±0.20
1 Place	±0.30
Angular	±0.5

SFP+ CONNECTOR, 20P, SMT, Au, 15u"							YAMAICHI ELECTRONICS USA INC.	
CLASS							TITLE	
SCALE	5/1	APP.	APP.	CHK.	DRW.	DSGN.	CNU109S-020-0010	
DURATION	MM	08/15/2011	08/15/2011	08/15/2011	08/15/2011	08/15/2011	DRW No.	YEU-A1711
ANGLE PROJ	3rd	K. Abe	K. Abe	I. Shimizu	I. Shimizu		Sheet No.	1/1
							REV.	B

X-ON Electronics

Largest Supplier of Electrical and Electronic Components

Click to view similar products for [I/O Connectors](#) category:

Click to view products by [Yamaichi](#) manufacturer:

Other Similar products are found below :

[571763P](#) [58098-0628](#) [72.250.1628.2](#) [72.250.2428.2](#) [74720-0505](#) [76.350.0729.0](#) [76871-1403](#) [FCN-244F080-G/1](#) [FCN-260A9920](#) [MP-5T180MUNNA-005](#) [PCR-E36PM](#) [PCS-XE26MA+](#) [G38A71314B](#) [1571250010](#) [157-22500-3](#) [MS3471L14-19P L/C](#) [91-569786-35H](#) [172501-4002](#) [172501-6002](#) [FCN-260C008-A/L0](#) [FCN-260C024-AL0](#) [FCN-261Z008](#) [2000314-1](#) [200331-1](#) [PCR-E36FC+](#) [PCS-E28FS+](#) [PCS-XE26SLFD+](#) [PCS-XE26SLFDT+](#) [G730VID08BDC24](#) [U90B2054081210](#) [UE86K842720321](#) [38113800006](#) [DP3AR020WQ1R200](#) [Z4.102.0680.0](#) [500-1040](#) [500-1052](#) [500-1054](#) [ZP-4008-66L](#) [0709821002](#) [10-565995-597N](#) [DX40-20P\(55\)](#) [5554841-1](#) [MS3474W18-8P-LC*](#) [U90B3054061110](#) [U65-E04-4020](#) [ZPF000000000097891](#) [557-262M2-06C](#) [747360449](#) [10099439-003C-TRLF](#) [10137239-0021LF](#)