

SIM Card Tray connector, Top mount Super low profile H=1.42mm

**P/N : Connector FMS006-3900-0
Tray FMA006-3900-0**

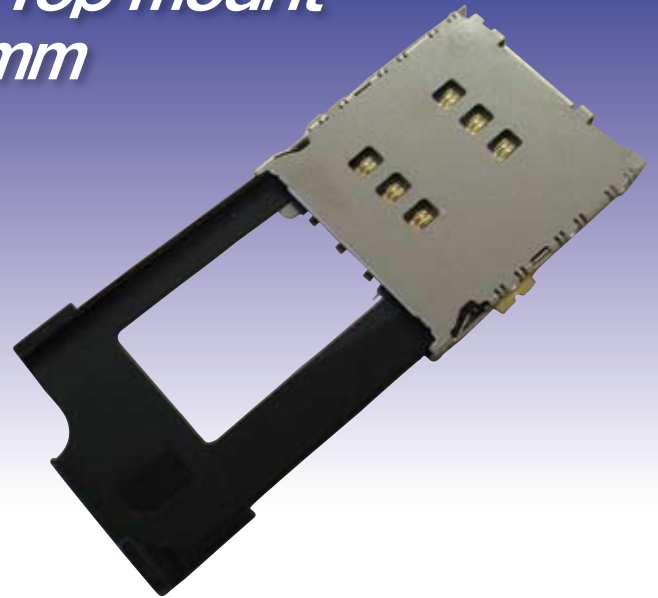
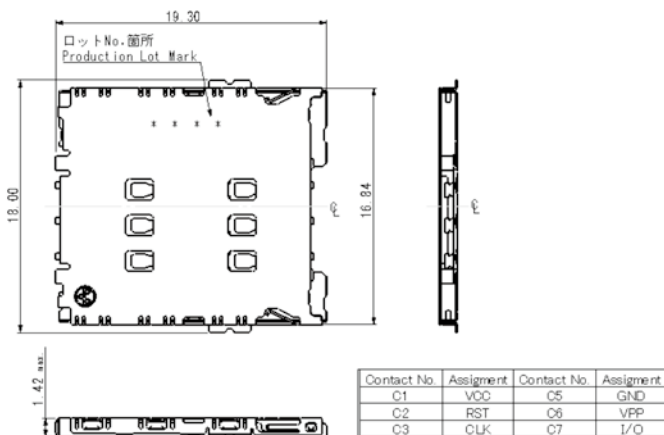
Feature

- Tray type
- Top mount type
- Super low profile design H=1.42mm max.
- Card mis-insertion prevention design
- Static discontinuity prevention design
- RoHS compliant
- Pb-free soldering capable
 - * Tray shall be mated after connector soldering.

Specification

Current Rating	0.5A
Voltage Rating	5.0V rms
Insulation Resistance	500MΩ minimum at 500V DC
Withstanding Voltage	250V AC rms, 1 min.
Contact Resistance	At 1mA/20mV Initial value : 100mΩ After test : 40mΩ max.
Operating Temperature	-25°C ~ +85°C
Durability	5,000cycles

Outline Dimension



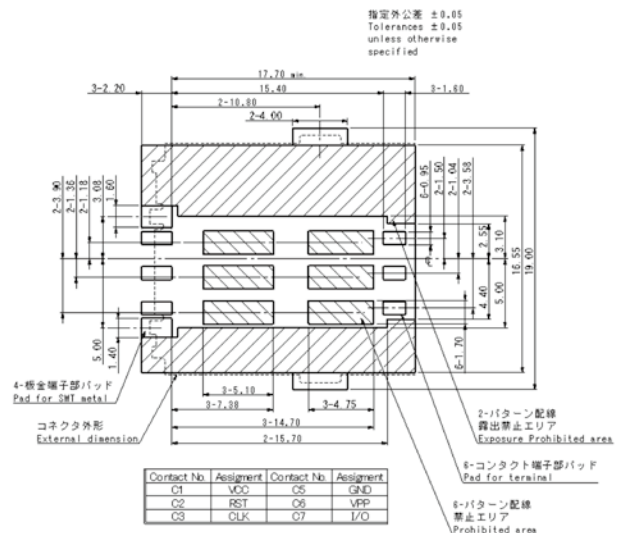
Packing Quantity

Connector : 1,200pcs/ tape and reel
Tray : 400pcs/ tray

Material & Plating

Insulator	Heat Resisting Plastic
Contact	Copper Alloy, Ni-Au
Soldering Tub	SUS
Metal Shell Cover	SUS, Ni-Au
Tray	Engineering Plastic

Recommended Foot Pattern



* Please request latest drawing and specification when this P/N is considered to adopt.

Issued: 2010 Sept. Rev. A



YAMAICHI ELECTRONICS Co.,Ltd.

3-28-7 Nakamagome, Ota-ku, Tokyo 143-8515, JAPAN
TEL: +81-3-3778-6160 FAX: +81-3-3778-6177
URL: <http://www.yamaichi.com>

Specification in this document is as for reference on representative p/n of each series and may change without prior notice. Since product improvement entails changes to electrical, material and mechanical properties, the purchasing party is strongly recommended to inquire the latest specification before placing purchase order. All other service, product and company names mentioned herein are the trademark or registered trademarks of their respective owners.

Yamaichi Electronics U.S.A. Inc.

475 Holger Way, San Jose, CA 95134, U.S.A.
TEL: +1-408-715-9100 FAX: +1-408-715-9199 <http://www.yamaichi.us>

Yamaichi Electronics Deutschland GmbH

Karl-Schmid-Strasse 9, D-81829 Munich, GERMANY
TEL: +49-89-45109-0 FAX: +49-89-45109-110 <http://www.yamaichi.de>

Yamaichi Electronics Hong Kong Ltd.

Unit 815-16 8F Tower 1 Grand Central Plaza, 138 Shatin Rural Committee Road, Shatin, N.T., HONG KONG
TEL: +852-2687-1968 FAX: +852-2601-9681 <http://www.yamaichi.com.cn/hk>

Asia Yamaichi Electronics Inc.

505, Kyungin B/D, 166-3, SamSeong-Dong, Gangnam-Gu, Seoul, 135-881, KOREA
TEL: +82-2-557-0522 FAX: +82-2-557-0622 <http://yamaichi.co.kr>

Yamaichi Electronics Singapore Pte. Ltd.

72 Bendemeer Road #04-21, Luzerne, Singapore 339941
TEL: +65-6297-8312 FAX: +65-6297-8141 <http://www.yamaichi.com.sg>

Yamaichi Electronics Taiwan Co., Ltd.

9F-1021, No. 144, Sec. 3, Min Chuan E. Road, Taipei, TAIWAN, R.O.C.
TEL: +886-2-2546-0507 FAX: +886-2-2546-0509 <http://www.yamaichi.com.tw>

X-ON Electronics

Largest Supplier of Electrical and Electronic Components

Click to view similar products for [Memory Card Connectors](#) category:

Click to view products by [Yamaichi](#) manufacturer:

Other Similar products are found below :

[M21-033321-005](#) [6407-249V-25273P](#) [6407-249V-25343P](#) [6426-201-21343](#) [69.920.0553.0](#) [FCN-568P068-G/07-4V](#) [809180410000000](#)
[HMCAP001](#) [252-0144-000](#) [2041353-2](#) [33CFAE-DN](#) [502431-1011](#) [NX1-32T-KT3K\(05\)](#) [95622-003LF](#) [N7E50-U516RB-50-SIN0005](#) [95079-00CALF](#) [33DVIR-29S12R](#) [125A-78C00](#) [MI20A-50PD-SF-EJL\(71\)](#) [KP10S-SF-PEJ\(812\)](#) [504536-0691](#) [504580-0691](#) [CCM03-3109 B LFT](#)
[MI21-50PD-SF\(91\)](#) [2309923-1](#) [61126-050CAHLF](#) [IC1GA-68PD-1.27DS-EJ\(72\)](#) [GTFP08432B1HR](#) [G85DT17001P1EU](#)
[G85B21611142HHR](#) [GSD090144HR](#) [G85D1140022P1HR](#) [GMCB05801124EU](#) [G85C11101152HHR](#) [G85B231021B1HR](#)
[G85D1160022HHR](#) [112K-TAA0-RA1](#) [115S-ACA2](#) [115S-ACA3](#) [115S-BS00](#) [115S-BT00](#) [115V-AD00](#) [503960-0695](#) [101B-TAA0-R](#) [101D-TAAA-R01](#) [101D-TAAB-R01](#) [104D-TCA0-R06](#) [104B-TAA0-R](#) [112C-TBAR-R02](#) [114B-40B00-R02](#)