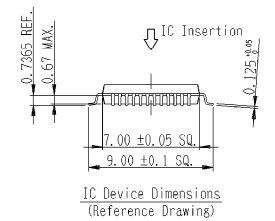
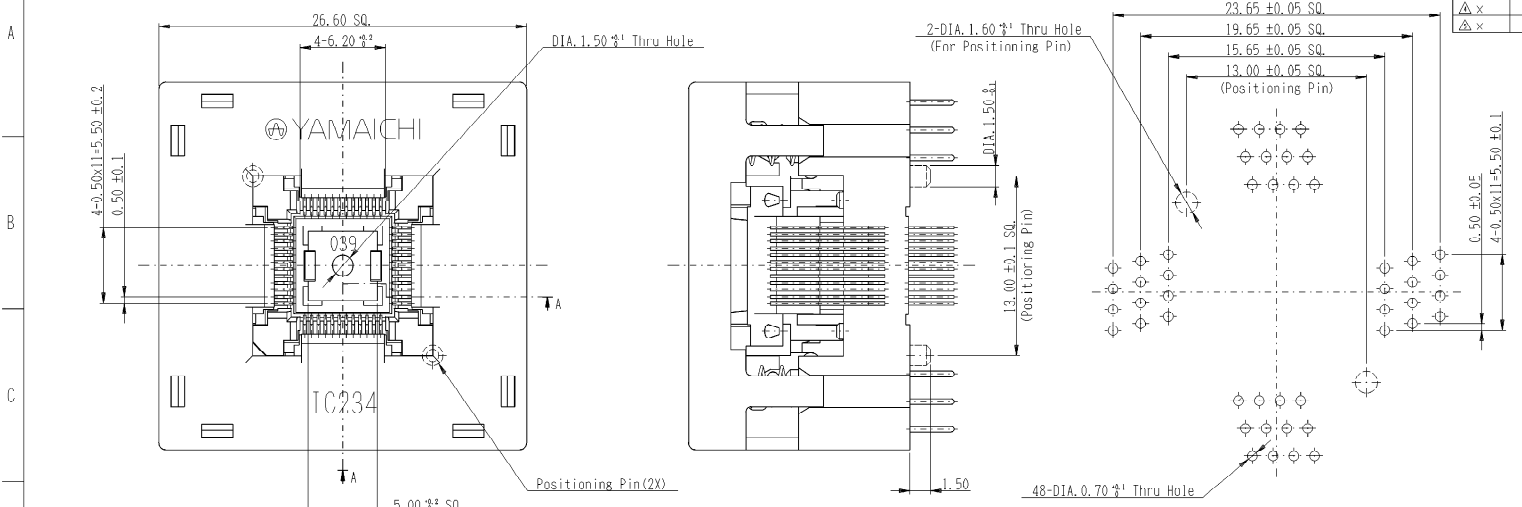
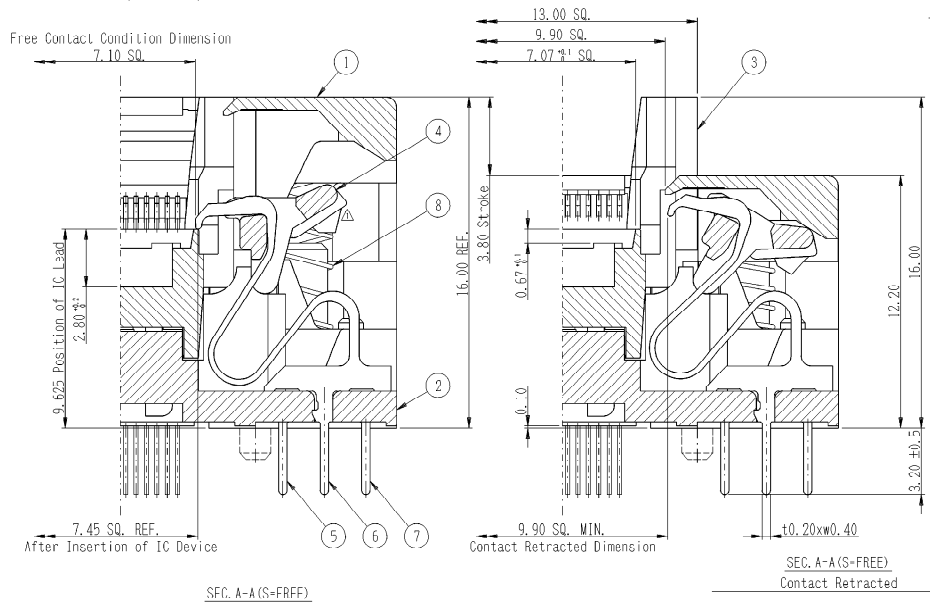


No. x QTY.	REVISION DESCRIPTION	APP.	CHK.	DSGN.	Mo - D - Yr	Decision Change #
△ x 1	Design change.	N. K.		I. I.	3-19-'98	DC 98-0757
△ x						
△ x						
△ x						
△ x						

This is the English version drawing, please note all Japanese text has been removed. Please consult factory for latest revision.

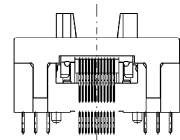
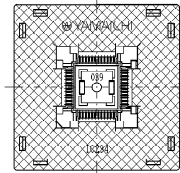


CONTACT & MOUNTING SCREW HOLE PATTERN
(Pattern shown looking down through top of socket)



Performance

- Insulation Resistance
1,000Mohm min. at DC100V
- Dielectric Withstanding Voltage
For 1 minute at AC100V
- Contact Resistance
30mohm max. at 10mA and 20mV max. Initial Number
- Operation Temperature
40deg. C +150deg. C
- Contact Force
20g - 80g Per Pin
- Operation Force
1.2Kg/Max.
- Life Span
10,000 Times (Mechanical)



Full Stroke Condition Drawing(S-FREE)
This Device Can Be Pressed On The Hatched (XXXX) Areas Shown In The Drawing Above

ITEM	DESCRIPTION	QTY.	MATERIAL	CONTENT	PART IDENT
8	Coil Spring K1012	4	SUS DIA. 0.20	KS SANGYO No. 1012	Commercial
7	-C	16			
6	Contact 2088 -B	16	BeCu t0.20	Ni-Au PL (CLASS BF)	AB-05839
5	-A	16			
4	IC234-0484-034 #1V	1	PES (GF)	BLACK	AB-06993
3	IC234-0484-039 #1B	1	PC1 (GF)	BLACK	AB-08728
2	IC234-0484-034* #1N-B	1	PES (GF)	BLACK	AB-06991
1	IC234-0484-034 #1N-A	1	PES (GF)	BLACK	AB-06990

Ordering Code

Type Name	Positioning Pin
IC234-0484-039N	Without
IC234-0484-039P	With

DU-2207						YAMAICHI ELECTRONICS USA, INC.	
TOLERANCES: ±0.3						(CLASS) QFP-P0.5-48P	
Unless otherwise specified						(TITLE) IC234-0484-039-*	
SCALE 2/1	APP.	APP.	CHK.	DRW.	DSGN.	(DRW. NO.)	Sheet No. / B
DIMENSION	3-18-'02	3-15-'02	3-15-'02	3-15-'02	3-14-'02	YEU-A0222	REV. B
3RD ANGLE PROJECTION	H. Watanabe	A. Limjoco	A. Querubin	A. Querubin			

X-ON Electronics

Largest Supplier of Electrical and Electronic Components

Click to view similar products for [IC & Component Sockets](#) category:

Click to view products by [Yamaichi](#) manufacturer:

Other Similar products are found below :

[0066-3-17-15-30-14-02-0](#) [670](#) [672](#) [673](#) [694-13-640-00-672-000](#) [712-93-120-41-001000](#) [714-93-104-31-018000](#) [8059-4G1-LF](#) [807-22-001-10-001101](#) [807-22-001-10-006101](#) [807-22-001-30-011101](#) [807-22-001-30-012101](#) [807-22-001-30-013101](#) [807-22-001-30-014101](#) [8-1437531-4](#) [8150-6P10](#) [833-93-034-10-001000](#) [851-41-006-10-001000](#) [851-43-008-20-001000](#) [851-43-014-20-001000](#) [851-93-006-20-001000](#) [851-93-010-20-001000](#) [853-43-020-10-001000](#) [86.010.0053.0](#) [116-43-308-41-007000](#) [PX-68LCC](#) [121-13-318-41-001000](#) [121-13-320-41-001000](#) [121-13-308-41-001000](#) [123-43-314-41-801000](#) [123-43-420-41-001000](#) [122-13-316-41-001000](#) [123-13-624-41-001000](#) [123-43-306-41-001000](#) [12-3513-11](#) [123-91-320-41-001000](#) [126-43-310-41-002000](#) [AKSUN 37V-T](#) [1437503-9](#) [1437504-1](#) [146-44-308-41-013000](#) [146-43-308-41-012000](#) [160-10-308-00-001000](#) [160-40-320-00-001000](#) [214-99-306-01-670800](#) [232-1270-02-0602](#) [2-382761-4](#) [2-5331677-4](#) [2-640360-3](#) [2801-2-00-50-00-00-07-0](#)