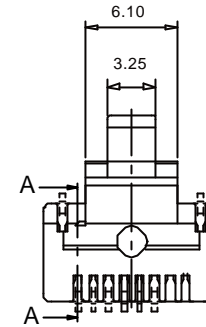
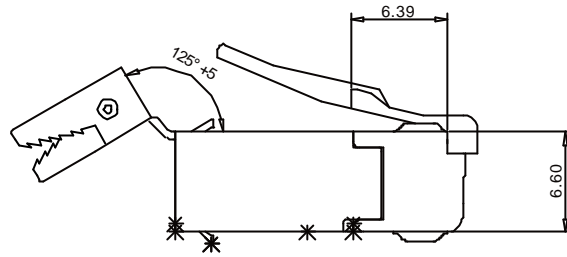
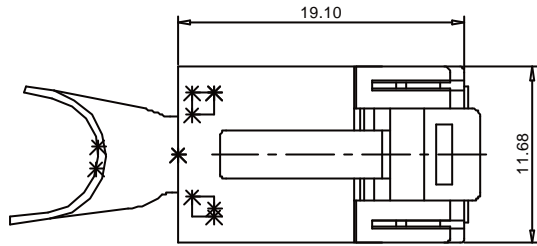
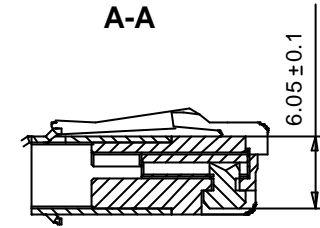


THE INFORMATION CONTAINED IN THIS DRAWING IS THE SOLE PROPERTY OF YAMAICHI ELECTRONICS DEUTSCHLAND GmbH. ANY REPRODUCTION IN PART OR WHOLE WITHOUT THE WRITTEN PERMISSION OF YAMAICHI ELECTRONICS DEUTSCHLAND GmbH IS PROHIBITED.

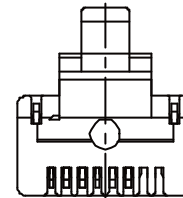
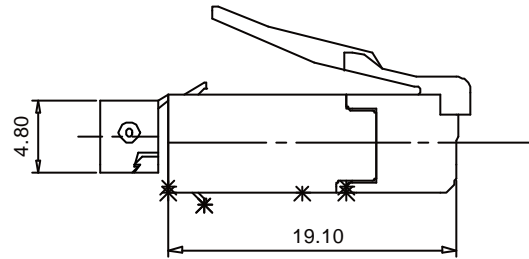
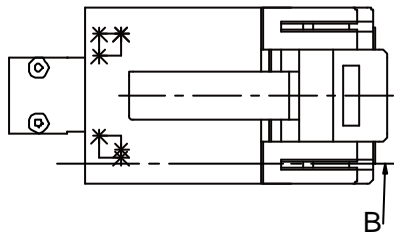
### Assembly before crimping



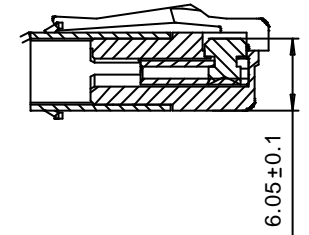
### A-A



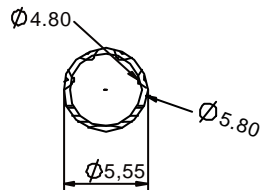
### Assembly after crimping



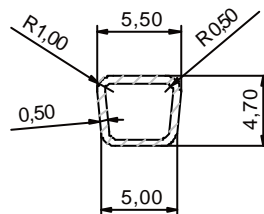
### B-B



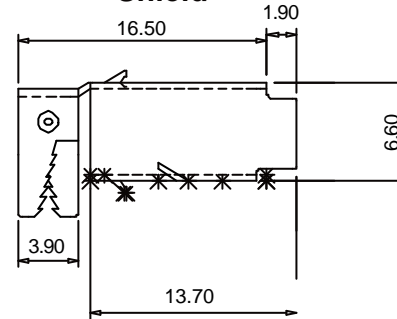
### Shield after round crimping



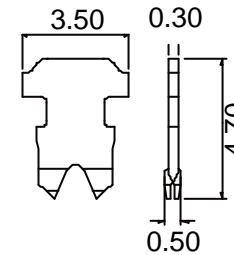
### After square crimping



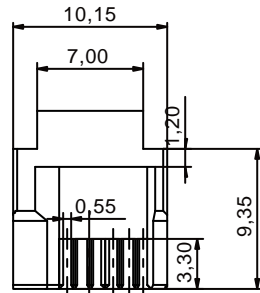
### Shield



### Contacts for stranded wire



### Insert



Material :  
 Housing material : PBT  
 Durability : 2000 mating cycles  
 Contact blade : phosphor Bronze  
 High strenght copper alloy  
 100 microinches nickel under plated &  
 gold selected 30 microinches

UNLESS OTHERWISE SPECIFIED:  
 DIMENSIONS ARE IN MILLIMETERS  
 TOLERANCES: ±0.3  
 ALL UNDIMENSIONED EDGES  
 HAVE A RADIUS OF: 0.2mm

REV.	REVISION DESCRIPTION	INITIALS	REV. DATE



NOTES:

DO NOT SCALE DRAWING

CLASSIFICATION: Y-ConPlug-31 /RJ 45 plus cable plug  
 8(6)+2 with power contacts

DESIGN	NAME	DATE
TN	BH	03.07.2003
DRAWN	BH	08.09.2003

TITLE: Customer-drawing

CHECKED	G.A.	APPROVED
	WM	HK

DWG NO.: Customer-P(090)A83 REVISION: 0

ANGLE PROJECTION: First  
 WEIGHT:  

SCALE: 3:1 SHEET 1 OF 1 A3 - ASSEMBLY

## X-ON Electronics

Largest Supplier of Electrical and Electronic Components

*Click to view similar products for [Modular Connectors](#) / [Ethernet Connectors](#) category:*

*Click to view products by [Yamaichi](#) manufacturer:*

Other Similar products are found below :

[8949-H88/06BLKA/SN](#) [74441-0010/BKN](#) [MP1010RX-1000](#) [MP44RX-1000](#) [PHJ-4P4C-1-V-4](#) [PHP-6P6C-5](#) [GAX-3-66](#) [GAX-8-62](#) [GDCX-PA-66-50](#) [GDCX-PN-64](#) [GDCX-PN-66](#) [GDCX-PN-66-50](#) [GDLX-A-66](#) [GDLX-N-66](#) [GDLX-S-66](#) [GDLX-S-88K](#) [GDTX-S-88-50](#) [GDX-PA-1010](#) [GLX-N-1010M-BLK](#) [GLX-S-88M-BLK](#) [GMX-N-1010](#) [GMX-S-1010](#) [GMX-S-66](#) [GMX-SMT4-N-88](#) [GPX-2-64](#) [GSGX-N-2-88](#) [GSGX-N-4-88](#) [GSX-NS2-88-3.05](#) [GSX-NS2-88-3.05-50](#) [GSX-NS-88-3.05-50](#) [PT-108A-8C-UL](#) [PT-J951-8C](#) [PTS-J531-8CS-50UL](#) [1-1775629-2](#) [A-2014-0-4](#) [GWLX-S-88-GR](#) [GWLX-S9-88-YG](#) [DC-1021-8-WH-6](#) [1300530003](#) [1324640-4](#) [RJ11FTVC2G](#) [RJ11FTVC2N](#) [RJFTVX2SA1G](#) [132764-001](#) [1413235](#) [MP88X-1000](#) [MPS88RX-5000](#) [E5288-S000K3-L](#) [E5908-15A242-L](#) [155302-001](#)