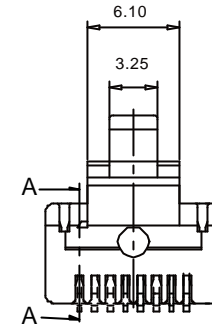
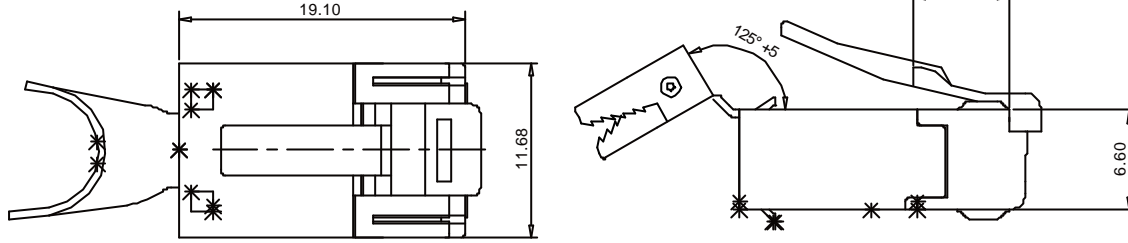
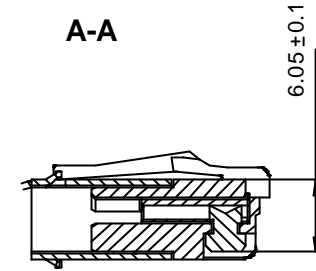


THE INFORMATION CONTAINED IN THIS DRAWING IS THE SOLE PROPERTY OF YAMAICHI ELECTRONICS DEUTSCHLAND GmbH. ANY REPRODUCTION IN PART OR WHOLE WITHOUT THE WRITTEN PERMISSION OF YAMAICHI ELECTRONICS DEUTSCHLAND GmbH IS PROHIBITED.

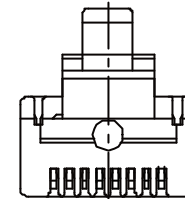
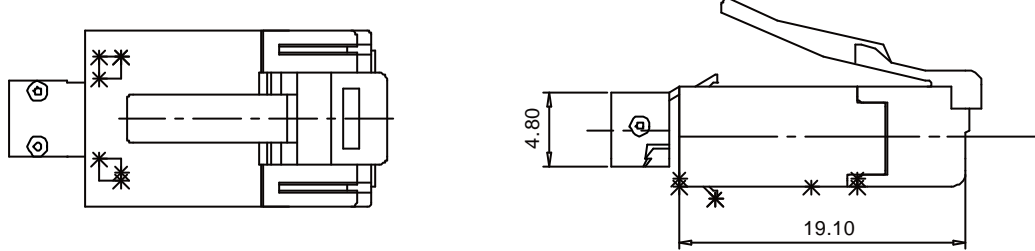
Assembly before crimping



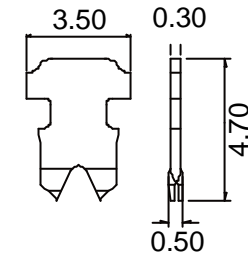
A-A



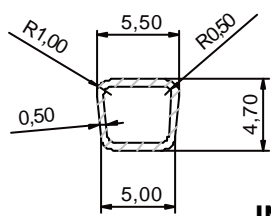
Assembly after crimping



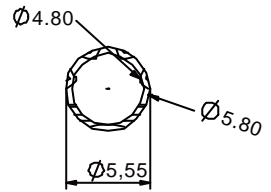
Contacts for stranded wire



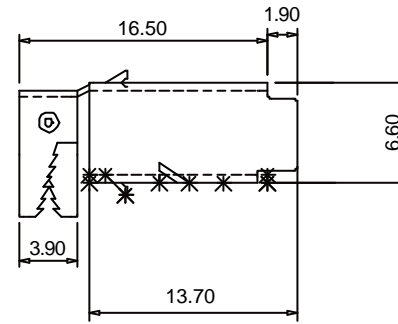
After square crimping



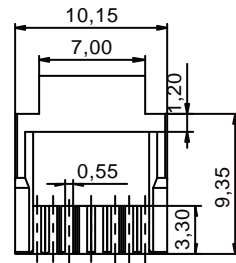
Shield after round crimping



Shield



INSERT



Material :
 Housing material : PBT
 Durability : 2000 mating cycles
 Contact blade : phosphor Bronze
 High strenght copper alloy
 100 microinches nickel under plated &
 gold selected 30 microinches

UNLESS OTHERWISE SPECIFIED:
 DIMENSIONS ARE IN MILLIMETERS
 TOLERANCES: ±0.3
 ALL UNDIMENSIONED EDGES
 HAVE A RADIUS OF: 0.2mm

REV.	REVISION DESCRIPTION	INITIALS	REV. DATE



NOTES:		DO NOT SCALE DRAWING		CLASSIFICATION: Y-ConPlug-41 /RJ45 plus cable plug 8(8) without power contacts	
DESIGN	TN	NAME	03.07.2003	DATE	TITLE: Customer-drawing
DRAWN	BH	DATE	08.09.2003		
CHECKED					
Q.A.	WM			DWG NO.:	Customer-P(090)A84
APPROVED	HK			REVISION:	0
ANGLE PROJECTION:	First			SCALE: 3:1	SHEET 1 OF 1
WEIGHT:					A3 - ASSEMBLY

X-ON Electronics

Largest Supplier of Electrical and Electronic Components

Click to view similar products for [Modular Connectors / Ethernet Connectors](#) category:

Click to view products by [Yamaichi](#) manufacturer:

Other Similar products are found below :

[8949-H88/06BLKA/SN](#) [74441-0010/BKN](#) [MP1010RX-1000](#) [MP44RX-1000](#) [PHJ-4P4C-1-V-4](#) [PHP-6P6C-5](#) [GAX-3-66](#) [GAX-8-62](#) [GDCX-PA-66-50](#) [GDCX-PN-64](#) [GDCX-PN-66](#) [GDCX-PN-66-50](#) [GDLX-A-66](#) [GDLX-N-66](#) [GDLX-S-66](#) [GDLX-S-88K](#) [GDTX-S-88-50](#) [GDX-PA-1010](#) [GLX-N-1010M-BLK](#) [GLX-S-88M-BLK](#) [GMX-N-1010](#) [GMX-S-1010](#) [GMX-S-66](#) [GMX-SMT4-N-88](#) [GPX-2-64](#) [GSGX-N-2-88](#) [GSGX-N-4-88](#) [GSX-NS2-88-3.05](#) [GSX-NS2-88-3.05-50](#) [GSX-NS-88-3.05-50](#) [PT-108A-8C-UL](#) [PT-J951-8C](#) [PTS-J531-8CS-50UL](#) [1-1775629-2](#) [A-2014-0-4](#) [GWLX-S-88-GR](#) [GWLX-S9-88-YG](#) [DC-1021-8-WH-6](#) [1300530003](#) [1324640-4](#) [RJ11FTVC2G](#) [RJ11FTVC2N](#) [RJFTVX2SA1G](#) [132764-001](#) [1413235](#) [MP88X-1000](#) [MPS88RX-5000](#) [E5288-S000K3-L](#) [E5908-15A242-L](#) [155302-001](#)