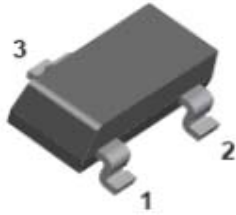


Schottky Barrier Diode



BAS70WT



BAS70WT-04



BAS70WT-05



BAS70WT-06

Features

- Epoxy meets UL-94 V-0 flammability rating
- Meets MSL level 1, per J-STD-020C, LF max peak of 260 °C
- Molding compound meets UL 94 V-0 flammability rating, RoHS-compliant, halogen-free
- Component in accordance to RoHS 2002/95/EC and WEEE 2002/96/EC

Mechanical Data

- **Package:** SOT-323
- Molding compound meets UL 94 V-0 flammability rating, RoHS-compliant, halogen-free
- **Terminals:** Tin plated leads, solderable per J-STD-002 and JESD22-B102

Marking:

BAS70WT	K73
BAS70WT-04	K74
BAS70WT-05	K75
BAS70WT-06	K76

■ Maximum Rating ($T_a=25^\circ\text{C}$ Unless otherwise specified)

Item	Symbol	Unit	Value
Continuous Reverse Voltage	V_R	V	70
Forward Continuous Current	I_F	mA	70
Non-Repetitive Peak Forward Surge Current @ $t = 8.3\text{ms}$	I_{FSM}	A	0.1
Junction Temperature	T_J	$^\circ\text{C}$	-55 to +125
Storage Temperature range	T_{stg}	$^\circ\text{C}$	-55 to +125

■ Ordering Information (Example)

PREFERRED P/N	PACKING CODE	UNIT WEIGHT(g)	MINIMUM PACKAGE(pcs)	INNER BOX QUANTITY(pcs)	OUTER CARTON QUANTITY(pcs)	DELIVERY MODE
BAS70WT	F2	Approximate 0.005	3000	30000	120000	7" reel
BAS70WT-04	F2	Approximate 0.005	3000	30000	120000	7" reel
BAS70WT-05	F2	Approximate 0.005	3000	30000	120000	7" reel
BAS70WT-06	F2	Approximate 0.005	3000	30000	120000	7" reel



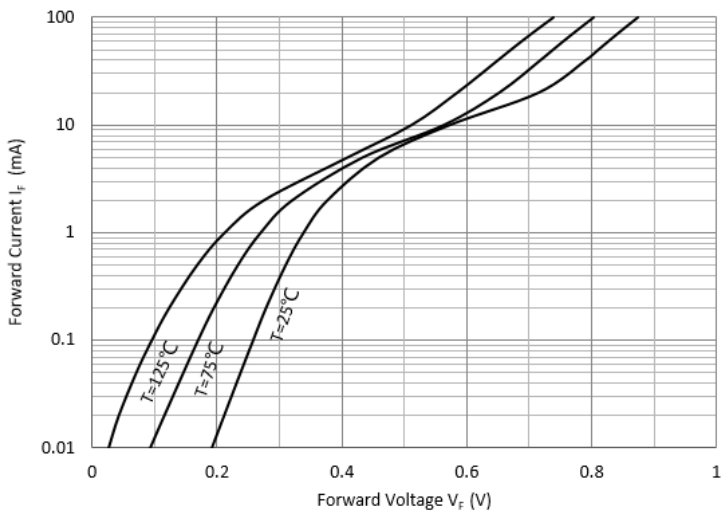
BAS70WT THRU BAS70WT-06

■ Electrical Characteristics (T_a=25°C Unless otherwise specified)

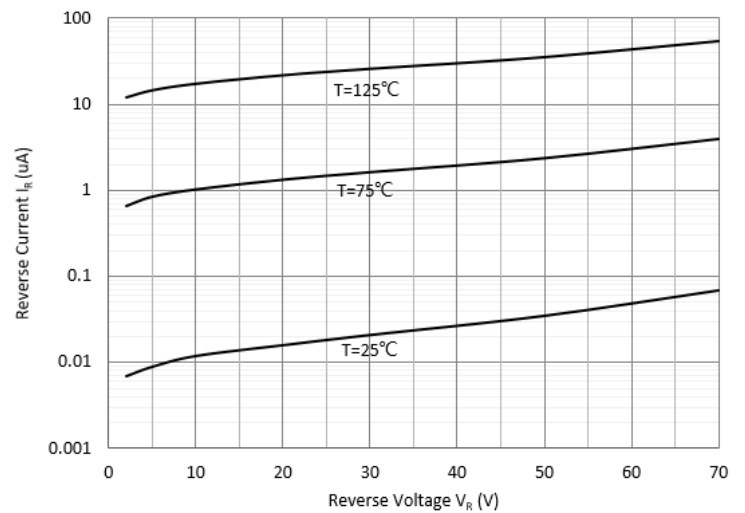
Item	Symbol	Unit	Conditions	Value
Maximum Instantaneous Forward Voltage	V _F	V	I _{FM} =1mA	0.41
			I _{FM} =15mA	1
Continuous Reverse Voltage	V _R	V	I _R =10uA	70
Maximum DC Reverse Current	I _R	uA	V _R =50V	0.2
Maximum Junction Capacitance	C _J	pF	f=1.0MHz, V _R =1.0V	2
Maximum Reverse Recovery Time	T _{rr}	ns	I _F =I _R =10mA, I _(REC) =1mA	5

■ Typical Characteristics

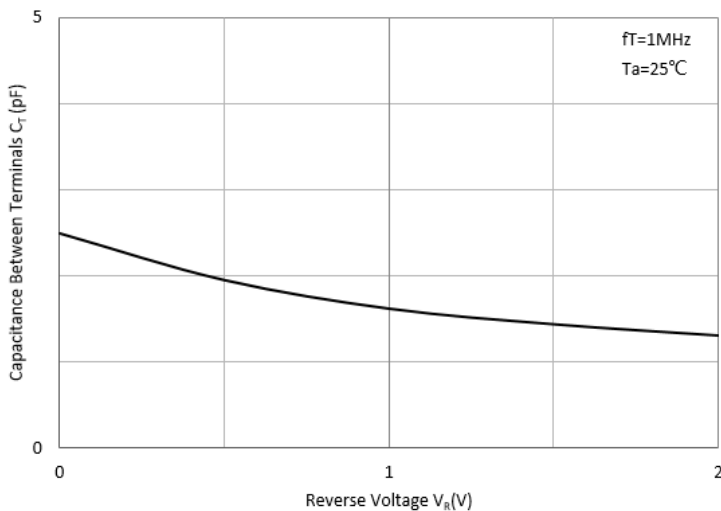
Forward Characteristics



Reverse Characteristics



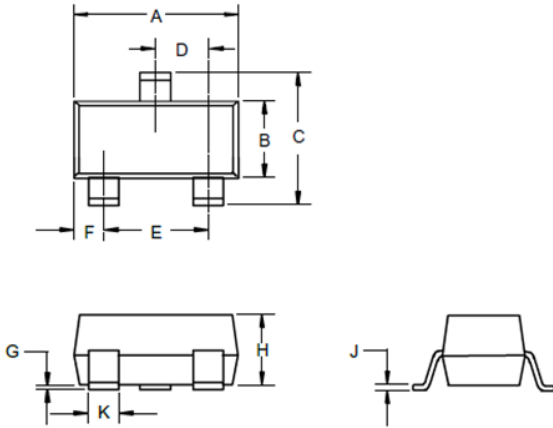
Capacitance Characteristics





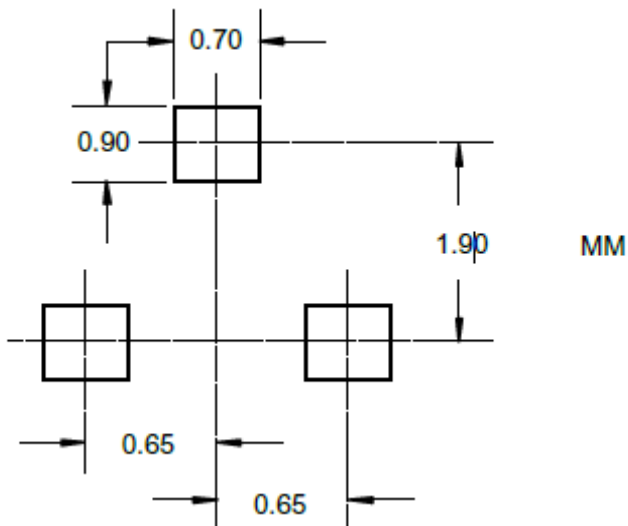
BAS70WT THRU BAS70WT-06

■SOT-323 Package Outline Dimensions



DIMENSIONS					
DIM	INCHES		MM		NOTE
	MIN	MAX	MIN	MAX	
A	.071	.087	1.80	2.20	
B	.045	.053	1.15	1.35	
C	.083	.096	2.10	2.45	
D	.026 Nominal		0.65Nominal		
E	.047	.055	1.20	1.40	
F	.012	.016	.30	.40	
G	.000	.004	.000	.100	
H	.035	.039	.90	1.00	
J	.004	.010	.100	.250	
K	.006	.016	.15	.40	

■SOT-323 Soldering Footprint





BAS70WT THRU BAS70WT-06

Disclaimer

The information presented in this document is for reference only. Yangzhou Yangjie Electronic Technology Co., Ltd. reserves the right to make changes without notice for the specification of the products displayed herein to improve reliability, function or design or otherwise.

The product listed herein is designed to be used with ordinary electronic equipment or devices, and not designed to be used with equipment or devices which require high level of reliability and the malfunction of which would directly endanger human life (such as medical instruments, transportation equipment, aerospace machinery, nuclear-reactor controllers, fuel controllers and other safety devices), Yangjie or anyone on its behalf, assumes no responsibility or liability for any damages resulting from such improper use of sale.

This publication supersedes & replaces all information previously supplied. For additional information, please visit our website [http:// www.21yangjie.com](http://www.21yangjie.com) , or consult your nearest Yangjie's sales office for further assistance.

X-ON Electronics

Largest Supplier of Electrical and Electronic Components

Click to view similar products for [Schottky Diodes & Rectifiers](#) category:

Click to view products by [Yangjie](#) manufacturer:

Other Similar products are found below :

[MA4E2039](#) [MA4E2508M-1112](#) [MBR1545CT](#) [MMBD301M3T5G](#) [RB160M-50TR](#) [D83C](#) [BAS16E6433HTMA1](#) [BAT 54-02LRH E6327](#)
[NRVBAF360T3G](#) [NSR05F40QNXT5G](#) [NTE555](#) [JANS1N6640](#) [SK310-T](#) [SS3003CH-TL-E](#) [GA01SHT18](#) [CRS10I30A\(TE85L,QM](#)
[MA4E2501L-1290](#) [MBRA140TRPBF](#) [MBRB30H30CT-1G](#) [BAT 15-04R E6152](#) [JANTX1N5712-1](#) [DMJ3940-000](#) [SB007-03C-TB-E](#)
[SK33B-TP](#) [NRVBB20100CTT4G](#) [NRVBM120LT1G](#) [NTSB30U100CT-1G](#) [VS-6CWQ10FNHM3](#) [CRG04\(T5L,TEMQ\)](#) [ACDBA1100LR-HF](#)
[ACDBA1200-HF](#) [ACDBA240-HF](#) [ACDBA3100-HF](#) [CDBQC0530L-HF](#) [CDBQC0240LR-HF](#) [ACDBA260LR-HF](#) [ACDBA1100-HF](#)
[MA4E2502L-1246](#) [10BQ015-M3/5BT](#) [NRVBM120ET1G](#) [CRS08TE85LQM](#) [PMAD1108-LF](#) [B120Q-13-F](#) [1N5819T-G](#) [B0530WSQ-7-F](#)
[PDS1040Q-13](#) [B160BQ-13-F](#) [SDM05U20CSP-7](#) [B140S1F-7](#) [HSM560Je3/TR13](#)