



Schottky Barrier Diode



SOT-323

Features

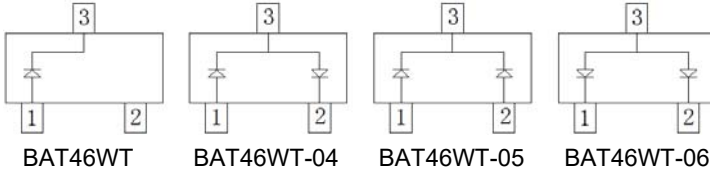
- Epoxy meets UL-94 V-0 flammability rating
- Meets MSL level 1, per J-STD-020C, LF max peak of 260 °C
- Molding compound meets UL 94 V-0 flammability rating, RoHS-compliant, halogen-free
- Component in accordance to RoHS 2002/95/EC and WEEE 2002/96/EC

Mechanical Data

- **Package:** SOT-323
- **Terminals:** Tin plated leads, solderable per J-STD-002 and JESD22-B102

Marking

BAT46WT	S91
BAT46WT-04	S92
BAT46WT-05	S93
BAT46WT-06	S94



■ Maximum Ratings (T_a=25°C Unless otherwise specified)

PARAMETER	SYMBOL	UNIT	Conditions	VALUE
Repetitive peak reverse voltage	V _{RRM}	V		100
Non-Repetitive Peak forward surge current	I _{FSM}	A	Non-Repetitive @ t = 8.3ms	0.75
Average forward current	I _{FAV}	mA		150
Power dissipation	P _D	mW		200
Thermal Resistance	R _{thJA}	°C/W		625
Maximum junction temperature	T _j	°C		125
Storage temperature range	T _{stg}	°C		-55 ~ +125

■ Ordering Information (Example)

PREFERRED P/N	PACKING CODE	UNIT WEIGHT(g)	MINIMUM PACKAGE(pcs)	INNER BOX QUANTITY(pcs)	OUTER CARTON QUANTITY(pcs)	DELIVERY MODE
BAT46WT	F2	Approximate 0.005	3000	30000	120000	7" reel
BAT46WT-04	F2	Approximate 0.005	3000	30000	120000	7" reel
BAT46WT-05	F2	Approximate 0.005	3000	30000	120000	7" reel
BAT46WT-06	F2	Approximate 0.005	3000	30000	120000	7" reel

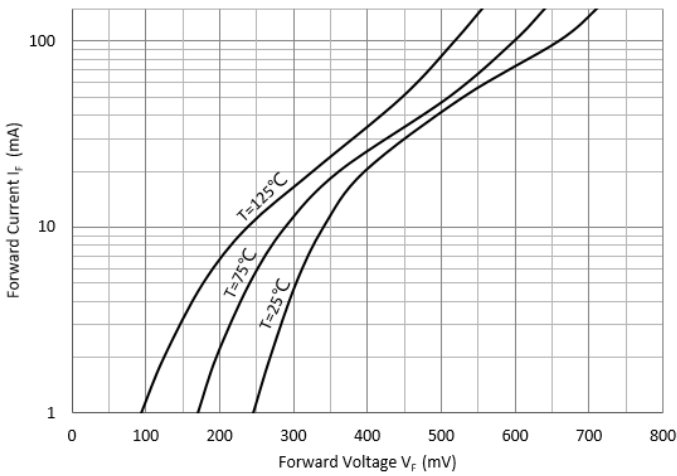


■ Electrical Characteristics (T_a=25°C Unless otherwise specified)

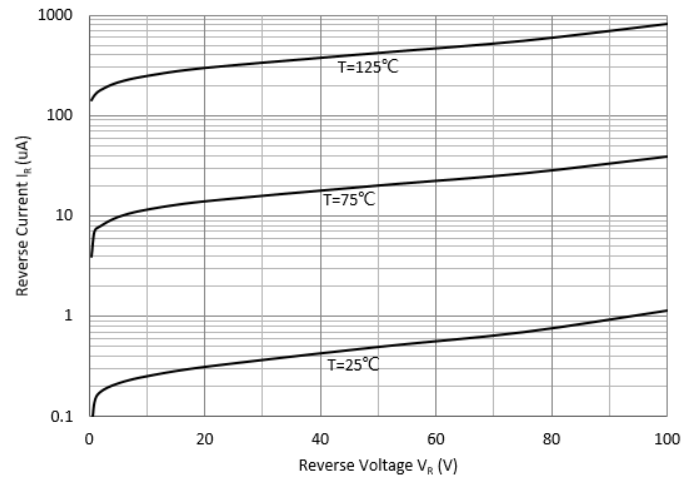
PARAMETER	SYMBOL	UNIT	Conditions	VALUE
Maximum Forward voltage	V _F	V	I _F =0.1mA	0.25
		V	I _F =10mA	0.45
		V	I _F =250mA	1
Maximum Reverse current	I _R	uA	V _R =1.5V	0.3
		uA	V _R =10V	0.5
		uA	V _R =50V	1
		uA	V _R =75V	2
Minimum Breakdown voltage	V _R	V	I _R =100μA	100
Maximum Diode capacitance	C _D	pF	V _R =0V, f =1MHz	20
			V _R =1V, f =1MHz	12

■ Characteristics (Typical)

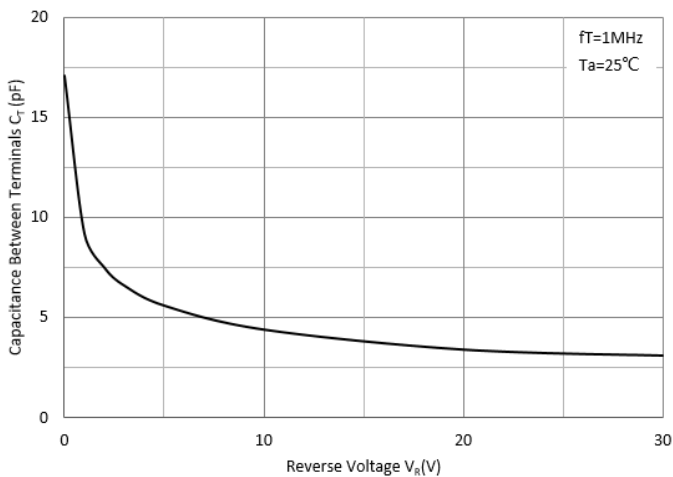
Forward Characteristics



Reverse Characteristics

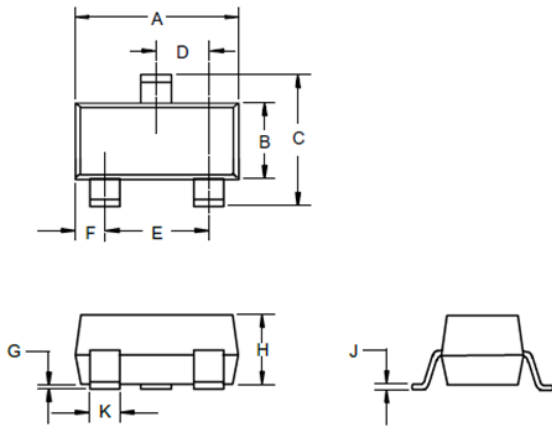


Capacitance Characteristics



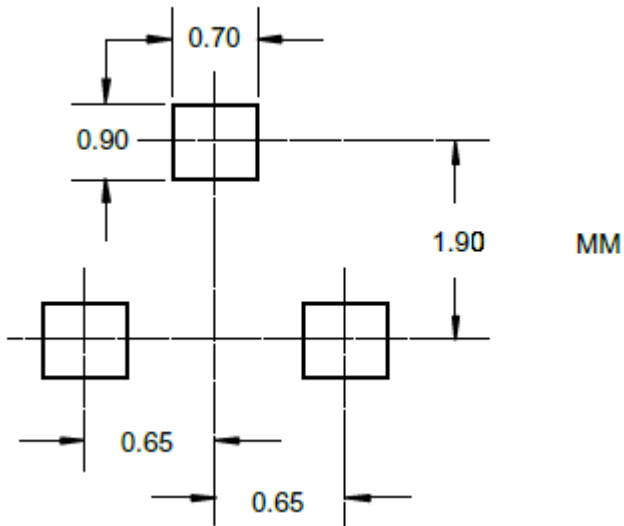


■ SOT-323 Package Outline Dimensions



DIM	INCHES		MM		NOTE
	MIN	MAX	MIN	MAX	
A	0.071	0.087	1.80	2.20	
B	0.045	0.053	1.15	1.35	
C	0.083	0.096	2.10	2.45	
D	0.026Nominal		0.65Nominal		
E	0.047	0.055	1.20	1.40	
F	0.012	0.016	0.30	0.40	
G	0.000	0.004	0.00	0.10	
H	0.035	0.039	0.90	1.00	
J	0.004	0.010	0.10	0.250	
K	0.006	0.016	0.15	0.40	

■ SOT-323 Soldering Footprint





Disclaimer

The information presented in this document is for reference only. Yangzhou Yangjie Electronic Technology Co., Ltd. reserves the right to make changes without notice for the specification of the products displayed herein to improve reliability, function or design or otherwise.

The product listed herein is designed to be used with ordinary electronic equipment or devices, and not designed to be used with equipment or devices which require high level of reliability and the malfunction of which would directly endanger human life (such as medical instruments, transportation equipment, aerospace machinery, nuclear-reactor controllers, fuel controllers and other safety devices), Yangjie or anyone on its behalf, assumes no responsibility or liability for any damages resulting from such improper use of sale.

This publication supersedes & replaces all information previously supplied. For additional information, please visit our website [http:// www.21yangjie.com](http://www.21yangjie.com) , or consult your nearest Yangjie's sales office for further assistance.

X-ON Electronics

Largest Supplier of Electrical and Electronic Components

Click to view similar products for [Schottky Diodes & Rectifiers](#) category:

Click to view products by [Yangjie](#) manufacturer:

Other Similar products are found below :

[MA4E2039](#) [MMBD301M3T5G](#) [RB160M-50TR](#) [D83C](#) [BAS16E6433HTMA1](#) [BAS 3010S-02LRH E6327](#) [BAT 54-02LRH E6327](#)
[NRVBAF360T3G](#) [NSR05F40QNXT5G](#) [NTE555](#) [JANS1N6640](#) [SS3003CH-TL-E](#) [GA01SHT18](#) [CRS10I30A\(TE85L,QM](#) [MBRA140TRPBF](#)
[MBRB30H30CT-1G](#) [BAT 15-04R E6152](#) [JANTX1N5712-1](#) [DMJ3940-000](#) [SB007-03C-TB-E](#) [NRVBB20100CTT4G](#) [NRVBM120LT1G](#)
[NTSB30U100CT-1G](#) [CRG04\(T5L,TEMQ\)](#) [ACDBA1100LR-HF](#) [ACDBA1200-HF](#) [ACDBA240-HF](#) [ACDBA3100-HF](#) [CDBQC0530L-HF](#)
[ACDBA260LR-HF](#) [ACDBA1100-HF](#) [10BQ015-M3/5BT](#) [NRVBM120ET1G](#) [VSSB410S-M3/5BT](#) [1N5819T-G](#) [PDS1040Q-13](#) [B160BQ-13-F](#)
[SDM05U20CSP-7](#) [BAS 70-07 E6433](#) [B140S1F-7](#) [HSM560Je3/TR13](#) [DDB2265-000](#) [ZHCS506QTA](#) [HSM190Je3/TR13](#) [B330AF-13](#)
[ACDBUC0230-HF](#) [SDM1U100S1F-7](#) [MBR10200CTF-G1](#) [CDLL5712](#) [DMF2822-000](#)