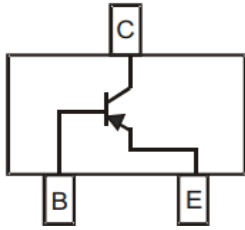


## PNP General Purpose Amplifier



**SOT-323**

### Features

- Epoxy meets UL-94 V-0 flammability rating and halogen free
- Moisture Sensitivity Level 1
- Part no. with suffix "Q" means AEC-Q101 qualified

### Applications

- PNP General purpose switching and amplification

### Mechanical Data

- Case: SOT-323
- Terminals: Tin plated leads, solderable per J-STD-002 and JESD22-B102
- Marking:

BC856AWQ	3A
BC856BWQ	3B
BC857AWQ	3E
BC857BWQ	3F
BC857CWQ	3G
BC858AWQ	3J
BC858BWQ	3K
BC858CWQ	3L

### ■ Maximum Ratings (Ta=25°C unless otherwise noted)

Item	Symbol	Unit	Value	
			BC856	BC857
Collector-Base Voltage	$V_{CBO}$	V	BC856	-80
			BC857	-50
			BC858	-30
Collector-Emitter Voltage	$V_{CEO}$	V	BC856	-65
			BC857	-45
			BC858	-30
Emitter-Base Voltage	$V_{EBO}$	V	-5	
Collector Current -Continuous	$I_C$	mA	-100	
Total Device Dissipation	$P_D$	mW	200	
Junction Temperature	$T_j$	°C	-55 to +150	
Storage Temperature	$T_{STG}$	°C	-55 to +150	



# BC856AWQ THRU BC858CWQ

RoHS  
COMPLIANT

## ■ Electrical Characteristics (Ta=25°C unless otherwise noted)

Item	Symbol	Unit	Conditions	Min	Typ	Max
Collector-base breakdown voltage	$V_{CBO}$	V	BC856	$I_C = -10\mu A, I_E = 0$	-80	
			BC857		-50	
			BC858		-30	
Collector-emitter breakdown voltage	$V_{CEO}$	V	BC856	$I_C = -10mA, I_B = 0$	-65	
			BC857		-45	
			BC858		-30	
Emitter-base breakdown voltage	$V_{EBO}$	V	$I_E = -1\mu A, I_C = 0$	-5		
Collector-base cut-off current	$I_{CBO}$	$\mu A$	$V_{CB} = -30V, I_E = 0$			-0.1
Emitter-base cut-off current	$I_{EBO}$	$\mu A$	$V_{EB} = -5V, I_C = 0$			-0.1
DC current gain	$h_{FE}$		BC856AWQ, BC857AWQ, BC858AWQ	$V_{CE} = -5V, I_C = -2mA$	125	250
			BC856BWQ, BC857BWQ, BC858BWQ		220	475
			BC857CWQ, BC858CWQ		420	800
Collector-emitter saturation voltage	$V_{CE(sat)}$	V	$I_C = -100mA, I_B = -5mA$			-0.65
Base-emitter saturation voltage	$V_{BE(sat)}$	V	$I_C = -100mA, I_B = -5mA$			-1.1

## ■ Other Characteristics (Ta=25°C unless otherwise noted)

Item	Symbol	Unit	Conditions	Min	Typ	Max
Transition frequency	$f_T$	MHz	$V_{CE} = -5V, I_C = -10mA, f = 100MHz$	100		

## ■ Ordering Information (Example)

PREFERRED P/N	PACKING CODE	UNIT WEIGHT(g)	MINIMUM PACKAGE(pcs)	INNER BOX QUANTITY(pcs)	OUTER CARTON QUANTITY(pcs)	DELIVERY MODE
BC856AWQ THRU BC858CWQ	F2	Approximate 0.005	3000	30000	120000	7" reel

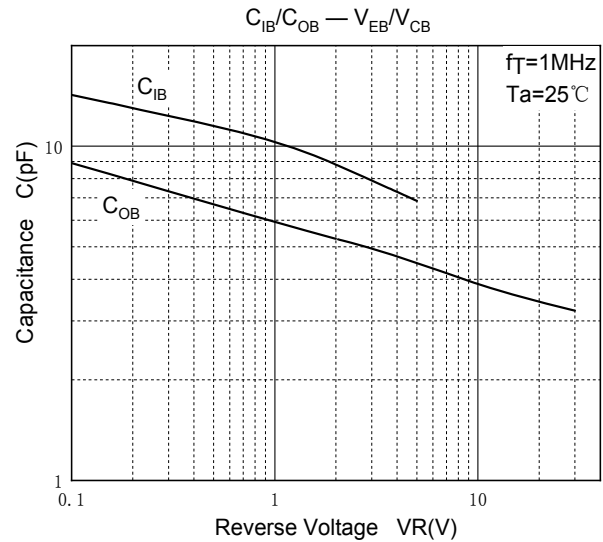
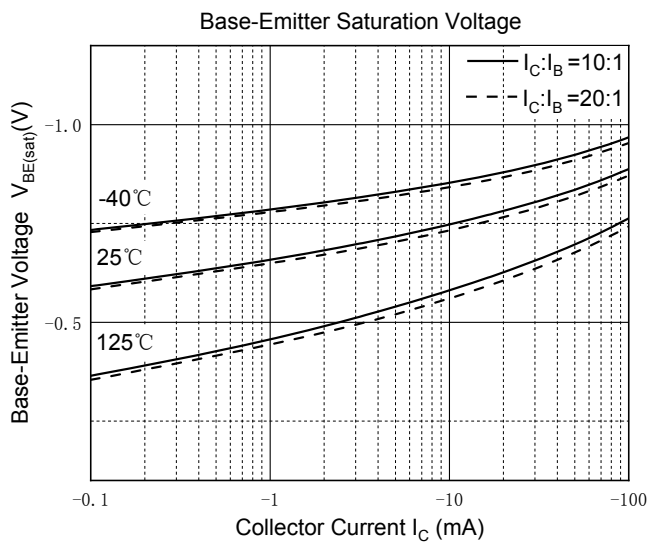
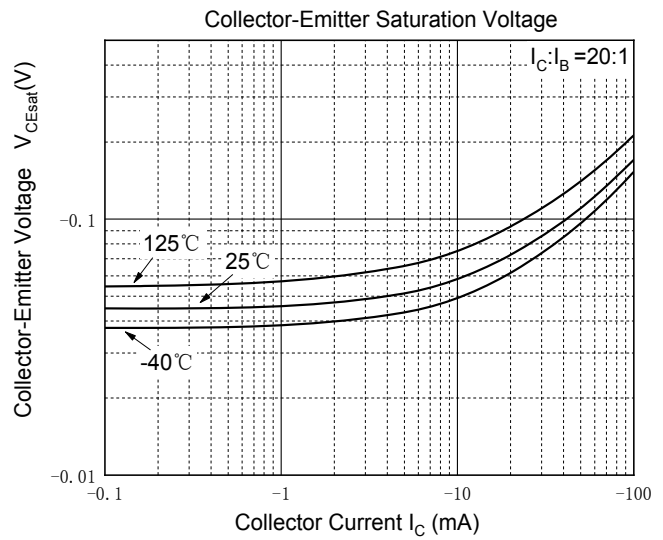
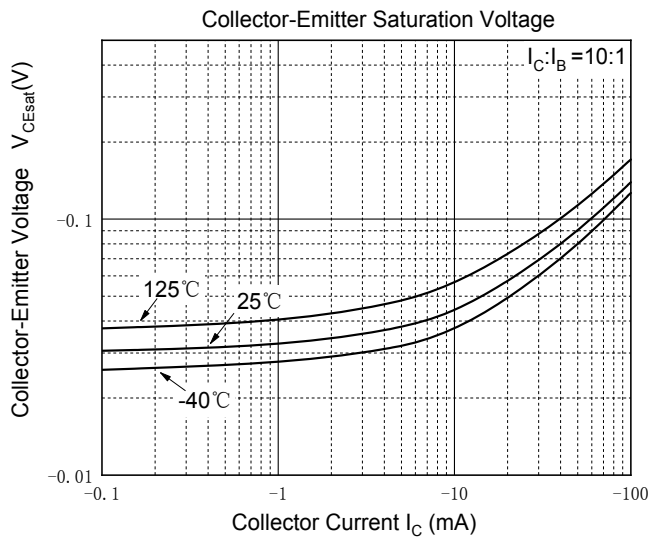
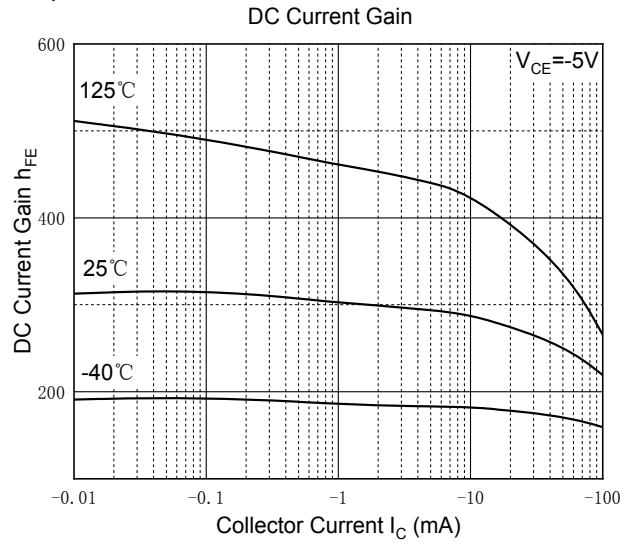
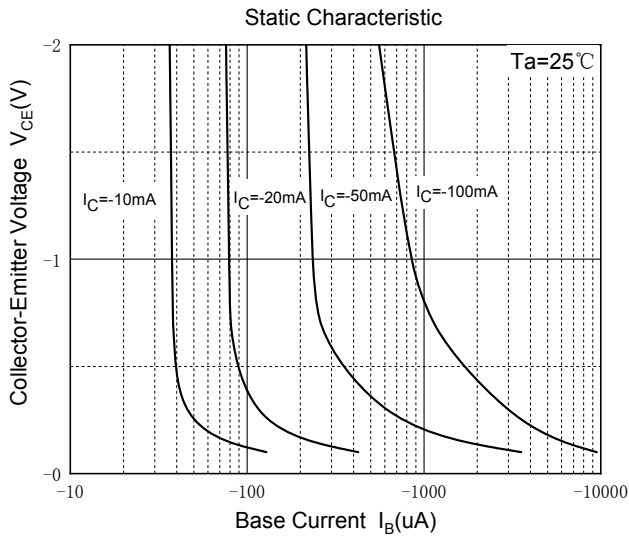


# BC856AWQ THRU BC858CWQ

RoHS  
COMPLIANT

## ■ Characteristics(Typical)

### BC857BWQ

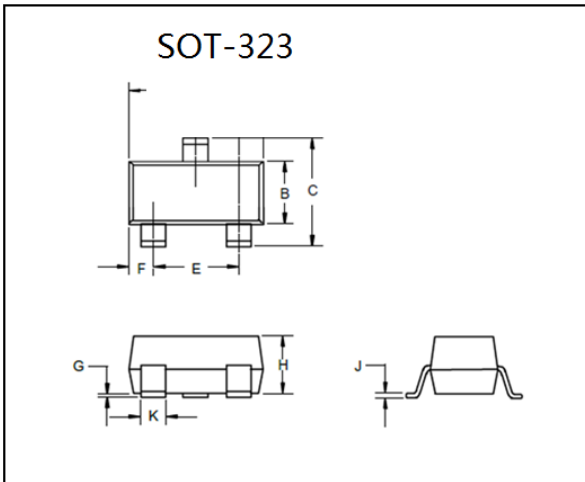




# BC856AWQ THRU BC858CWQ

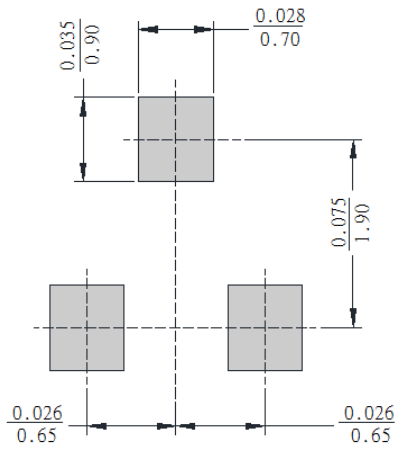
RoHS  
COMPLIANT

## ■ SOT-323 Package Outline Dimensions



DIM	INCHES		MM		NOTE
	MIN	MAX	MIN	MAX	
A	0.071	0.087	1.80	2.20	
B	0.045	0.053	1.15	1.35	
C	0.083	0.096	2.10	2.45	
D	0.026Nominal		0.65Nominal		
E	0.047	0.055	1.20	1.40	
F	0.012	0.016	0.30	0.40	
G	0.000	0.004	0.00	0.10	
H	0.035	0.039	0.90	1.00	
J	0.004	0.010	0.10	0.250	
K	0.006	0.016	0.15	0.40	

## ■ SOT-323 Suggested Pad Layout



Unit:  $\frac{\text{inch}}{\text{mm}}$



## Disclaimer

The information presented in this document is for reference only. Yangzhou Yangjie Electronic Technology Co., Ltd. reserves the right to make changes without notice for the specification of the products displayed herein to improve reliability, function or design or otherwise.

The product listed herein is designed to be used with automotive electronics, are not designed for use in medical, life-saving, life-sustaining, or military. Yangjie or anyone on its behalf, assumes no responsibility or liability for any damages resulting from such improper use of sale.

This publication supersedes & replaces all information previously supplied. For additional information, please visit our website [http:// www.21yangjie.com](http://www.21yangjie.com) , or consult your nearest Yangjie's sales office for further assistance.

## X-ON Electronics

Largest Supplier of Electrical and Electronic Components

*Click to view similar products for [Bipolar Transistors - BJT category](#):*

*Click to view products by [Yangjie manufacturer](#):*

Other Similar products are found below :

[619691C](#) [MCH4017-TL-H](#) [MMBT-2369-TR](#) [BC546/116](#) [BC557/116](#) [BSW67A](#) [NJVMJD148T4G](#) [NTE123AP-10](#) [NTE153MCP](#) [NTE16](#)  
[NTE195A](#) [NTE92](#) [2N4401-A](#) [2N6728](#) [2SA1419T-TD-H](#) [2SA2126-E](#) [2SB1204S-TL-E](#) [2SC2712S-GR,LF](#) [2SC4731T-AY](#) [FJPF5304DTU](#)  
[2N2907A](#) [2N3904-NS](#) [2N5769](#) [2SB1324-TD-E](#) [2SC2412KT146S](#) [2SC3332T](#) [2SC3902S](#) [2SC5231C8-TL-E](#) [2SD1685F](#) [CPH6501-TL-E](#)  
[MCH4021-TL-E](#) [MJE340](#) [Jantx2N5416](#) [US6T6TR](#) [NJL0281DG](#) [732314D](#) [CPH3121-TL-E](#) [CPH6021-TL-H](#) [873787E](#) [IMZ2AT108](#)  
[UMX21NTR](#) [MCH6102-TL-E](#) [NJL0302DG](#) [TTA1452B,S4X\(S](#) [NTE13](#) [NTE26](#) [NTE282](#) [NTE323](#) [NTE350](#) [NTE81](#)