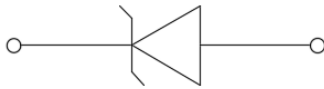
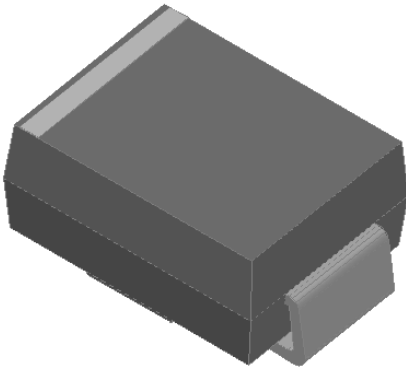


Surface Mount Zener Diodes



Features

- Low profile package
- Ideal for automated placement
- Glass passivated chip junction
- High forward surge capability
- Meets MSL level 1, per J-STD-020, LF maximum peak of 260 °C

Mechanical Data

- **Package:** DO-214AA (SMB)
Molding compound meets UL 94 V-0 flammability rating, RoHS-compliant, halogen-free
- **Terminals:** Tin plated leads, solderable per J-STD-002 and JESD22-B102
- **Polarity:** Cathode line denotes the cathode end

■Maximum Ratings (T_a=25°C Unless otherwise specified)

PARAMETER	SYMBOL	UNIT	MAX
DC power dissipation at TL = 75 °C	P _D	W	3.0
Maximum instantaneous forward voltage@ I _F =200mA	V _F	V	1.5
Maximum junction temperature	T _j	°C	-55 to +150
Storage temperature range	T _{stg}	°C	-55 to +150

■Electrical Characteristics (T_a=25°C Unless otherwise specified)

Part Number	Nominal Zener voltage			Test current	Maximum dynamic impedance resistance			Maximum reverse leakage current		Maximum DC Zener Current
	Min V _Z ⁽¹⁾ at I _{ZT}	Typ. V _Z ⁽¹⁾ at I _{ZT}	Max V _Z ⁽¹⁾ at I _{ZT}	I _{ZT}	Z _{ZT} at I _{ZT}	Z _{ZK} at I _{ZK}	I _{ZK}	I _R	Test voltage V _R	I _{ZM}
	V	V	V	mA	Ω	Ω	mA	μA	V	mA
SMB3Z3.3A	3.14	3.3	3.47	227.3	10.0	500	1.00	100.0	1.0	817.0
SMB3Z3.6A	3.42	3.6	3.78	208.3	9.0	500	1.00	100.0	1.0	749.0
SMB3Z3.9A	3.71	3.9	4.10	192.0	4.5	400	1.00	100.0	1.0	691.0
SMB3Z4.3A	4.09	4.3	4.52	174.0	4.5	400	1.00	50.0	1.0	627.0
SMB3Z4.7A	4.47	4.7	4.94	160.0	4.0	500	1.00	50.0	1.0	573.0
SMB3Z5.1A	4.85	5.1	5.36	147.0	3.5	550	1.00	10.0	1.0	528.0
SMB3Z5.6A	5.32	5.6	5.88	134.0	2.5	600	1.00	10.0	2.0	481.0
SMB3Z6.2A	5.89	6.2	6.51	121.0	1.5	700	1.00	10.0	3.0	435.0
SMB3Z6.8A	6.46	6.8	7.14	110.0	2.0	700	1.00	10.0	4.0	393.0
SMB3Z7.5A	7.13	7.5	7.88	100.0	2.0	700	0.50	10.0	5.0	360.0
SMB3Z8.2A	7.79	8.2	8.61	91.0	2.3	700	0.50	10.0	6.0	330.0
SMB3Z9.1A	8.65	9.1	9.56	82.0	2.5	700	0.50	10.0	7.0	297.0



SMB3ZXXA SERIES

Part Number	Nominal Zener voltage			Test current	Maximum dynamic impedance resistance			Maximum reverse leakage current		Maximum DC Zener Current
	Min $V_Z^{(1)}$ at I_{ZT}	Typ. $V_Z^{(1)}$ at I_{ZT}	Max $V_Z^{(1)}$ at I_{ZT}	I_{ZT}	Z_{ZT} at I_{ZT}	Z_{ZK} at I_{ZK}	I_{ZK}	I_R	Test voltage V_R	I_{ZM}
	V	V	V	mA	Ω	Ω	mA	μA	V	mA
SMB3Z10A	9.50	10.0	10.50	75.0	3.5	700	0.25	10.0	7.6	270.0
SMB3Z11A	10.45	11.0	11.55	68.0	4.0	700	0.25	0.5	8.4	225.0
SMB3Z12A	11.40	12.0	12.60	63.0	4.5	700	0.25	0.5	9.1	246.0
SMB3Z13A	12.35	13.0	13.65	58.0	4.5	700	0.25	0.5	9.9	208.0
SMB3Z14A	13.30	14.0	14.70	53.0	5.0	700	0.25	0.5	10.6	193.0
SMB3Z15A	14.25	15.0	15.75	50.0	5.5	700	0.25	0.5	11.4	180.0
SMB3Z16A	15.20	16.0	16.80	47.0	5.5	700	0.25	0.5	12.2	169.0
SMB3Z17A	16.15	17.0	17.85	44.0	6.0	750.0	0.25	0.5	13.0	159.0
SMB3Z18A	17.10	18.0	18.90	42.0	6.0	750.0	0.25	0.5	13.7	150.0
SMB3Z19A	18.05	19.0	19.95	40.0	7.0	750.0	0.25	0.5	14.4	142.0
SMB3Z20A	19.00	20.0	21.00	37.0	7.0	750.0	0.25	0.5	15.2	135.0
SMB3Z22A	20.90	22.0	23.10	34.0	8.0	750.0	0.25	0.5	16.7	123.0
SMB3Z24A	22.80	24.0	25.20	31.0	9.0	750	0.25	0.5	18.2	112.0
SMB3Z27A	25.65	27.0	28.35	28.0	10.0	750	0.25	0.5	20.6	100.0
SMB3Z30A	28.50	30.0	31.50	25.0	16.0	1000	0.25	0.5	22.5	90.0
SMB3Z33A	31.35	33.0	34.65	23.0	20.0	1000	0.25	0.5	25.1	82.0
SMB3Z36A	34.20	36.0	37.80	21.0	22.0	1000	0.25	0.5	27.4	75.0
SMB3Z39A	37.05	39.0	40.95	19.0	28.0	1000	0.25	0.5	29.7	69.0
SMB3Z43A	40.85	43.0	45.15	17.0	33.0	1500	0.25	0.5	32.7	63.0
SMB3Z47A	44.65	47.0	49.35	16.0	38.0	1500	0.25	0.5	35.6	57.0
SMB3Z51A	48.45	51.0	53.55	15.0	45.0	1500	0.25	0.5	38.8	53.0
SMB3Z56A	53.20	56.0	58.80	13.0	50.0	2000	0.25	0.5	42.6	48.0
SMB3Z62A	58.90	62.0	65.10	12.0	55.0	2000	0.25	0.5	47.1	44.0
SMB3Z68A	64.60	68.0	71.40	11.0	70.0	2000	0.25	0.5	51.7	40.0
SMB3Z75A	71.25	75.0	78.75	10.0	85.0	2000	0.25	0.5	56.0	36.0
SMB3Z82A	77.90	82.0	86.10	9.1	95.0	3000	0.25	0.5	62.2	33.0
SMB3Z91A	86.45	91.0	95.55	8.2	115.0	3000	0.25	0.5	69.2	30.0
SMB3Z100A	95.00	100.0	105.00	7.5	160.0	3000	0.25	0.5	76.0	27.0
SMB3Z110A	104.50	110.0	115.50	6.8	225.0	4000	0.25	0.5	83.6	25.0
SMB3Z120A	114.00	120.0	126.00	6.3	300.0	4500	0.25	0.5	91.2	22.0
SMB3Z130A	123.50	130.0	136.50	5.8	375.0	5000	0.25	0.5	98.8	21.0
SMB3Z140A	133.00	140.0	147.00	5.3	475.0	5000	0.25	0.5	106.4	19.0
SMB3Z150A	142.50	150.0	157.50	5.0	550.0	6000	0.25	0.5	114.0	18.0
SMB3Z160A	152.00	160.0	168.00	4.7	625.0	6500	0.25	0.5	121.6	17.0
SMB3Z170A	161.50	170.0	178.50	4.4	650.0	7000	0.25	0.5	130.4	16.0



SMB3ZXXA SERIES

Part Number	Nominal Zener voltage			Test current	Maximum dynamic impedance resistance			Maximum reverse leakage current		Maximum DC Zener Current
	Min $V_Z^{(1)}$ at I_{ZT}	Typ. $V_Z^{(1)}$ at I_{ZT}	Max $V_Z^{(1)}$ at I_{ZT}		Z_{ZT} at I_{ZT}	Z_{ZK} at I_{ZK}	I_{ZK}	I_R	Test voltage V_R	
	V	V	V	mA	Ω	Ω	mA	μA	V	mA
SMB3Z180A	171.00	180.0	189.00	4.2	700.0	7000	0.25	0.5	136.8	15.0
SMB3Z190A	180.50	190.0	199.50	4.0	800.0	8000	0.25	0.5	144.8	14.0
SMB3Z200A	190.00	200.0	210.00	3.7	875.0	8000	0.25	0.5	152.0	13.0
SMB3Z210A	199.50	210.0	220.50	3.5	950.0	8300	0.25	0.5	169.0	12.3
SMB3Z220A	209.00	220.0	231.00	3.3	1600.0	8500	0.25	0.5	178.0	11.6
SMB3Z230A	218.50	230.0	241.50	3.1	2000.0	9000	0.25	0.5	186.0	10.9
SMB3Z240A	228.00	240.0	252.00	2.9	2500.0	9000	0.25	0.5	195.0	10.2
SMB3Z250A	237.50	250.0	262.50	2.7	3000.0	9500	0.25	0.5	205.0	9.5

Notes:

(1) Nominal Zener voltage Range: 95% Typ. V_Z (1)at I_{ZT} ----105% Typ. V_Z (1)at I_{ZM}

■ Characteristics (Typical)

FIG1: Power Temperature Derating Curve

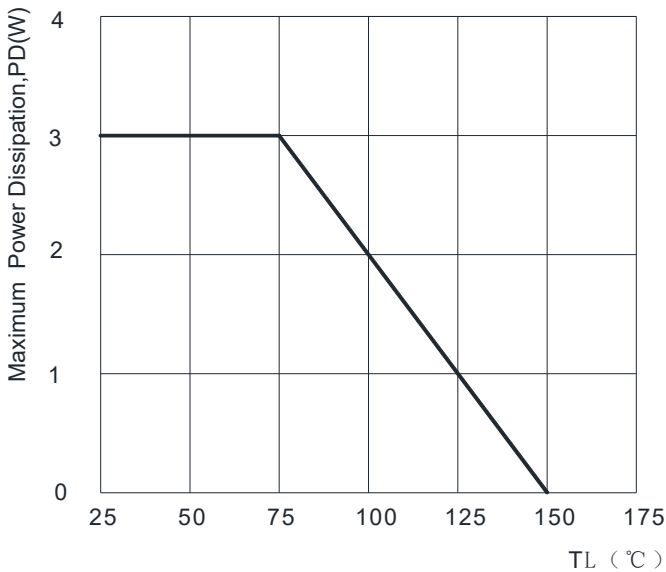


FIG2: Temperature Coefficients v.s. Zener Voltage

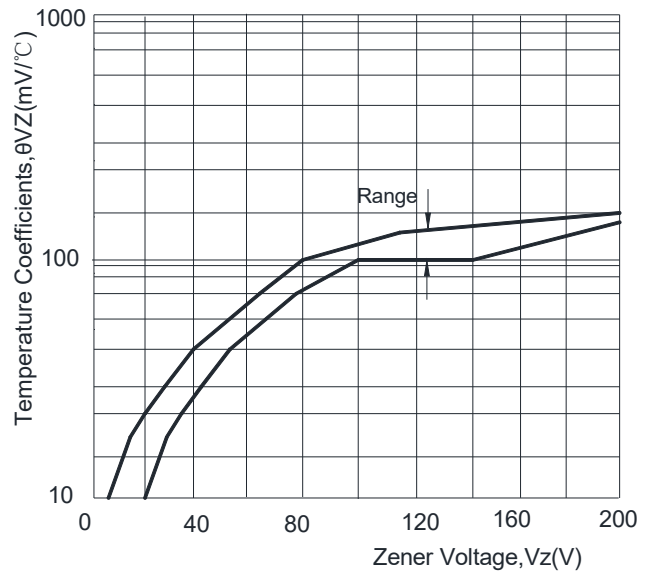


FIG3: Pulse Waveform

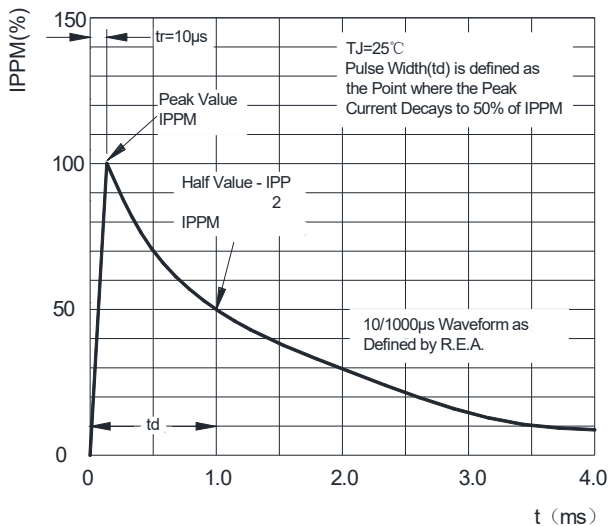
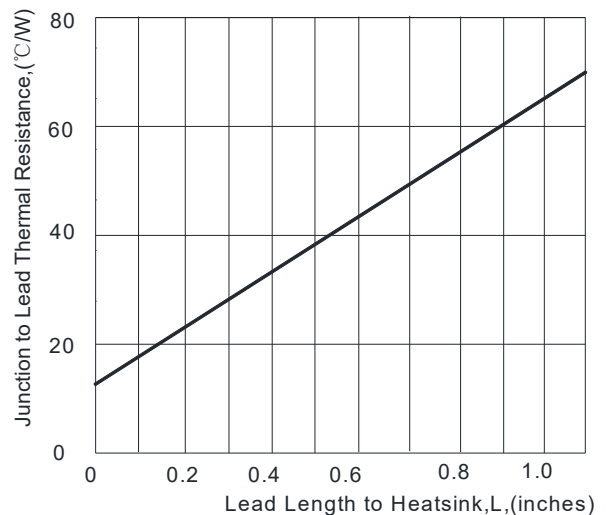


FIG4: Typical Thermal Resistance v.s. Lead Length





SMB3ZXXA SERIES

■ Characteristics (Typical)

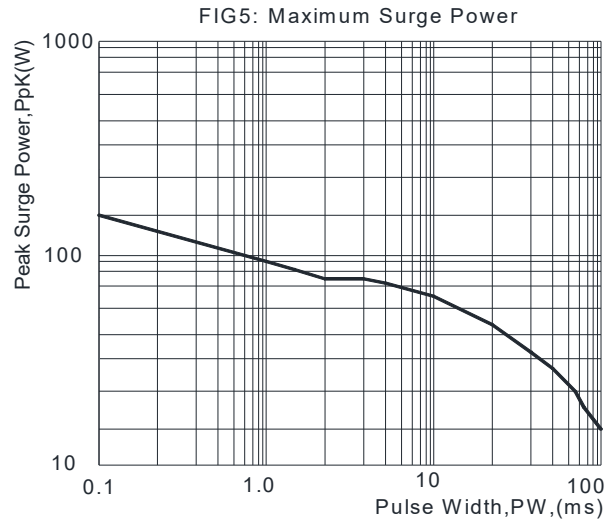
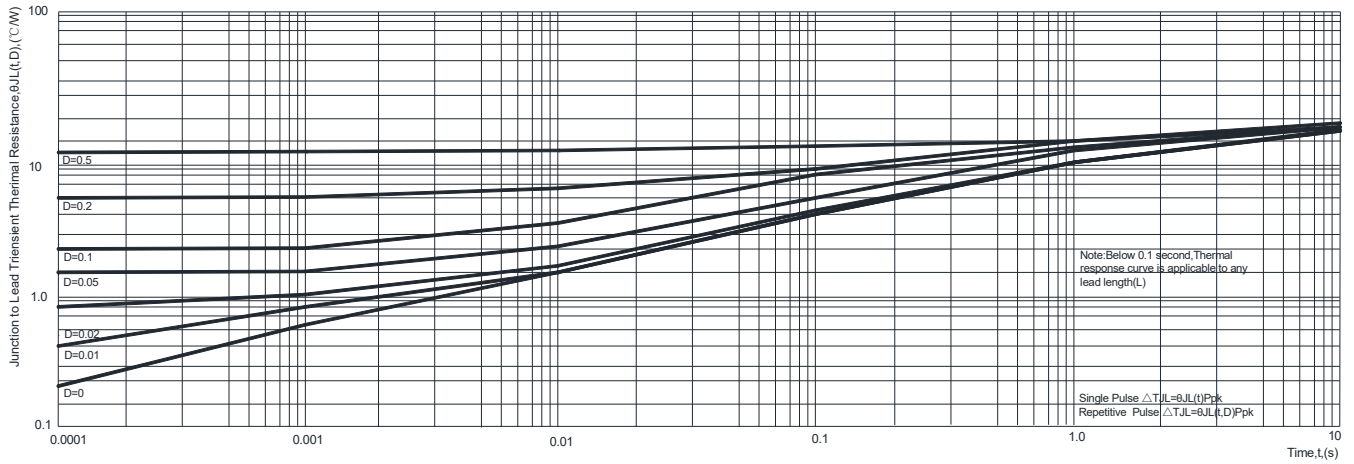


FIG6: Typical Thermal Response L, Lead Length=3/8inch



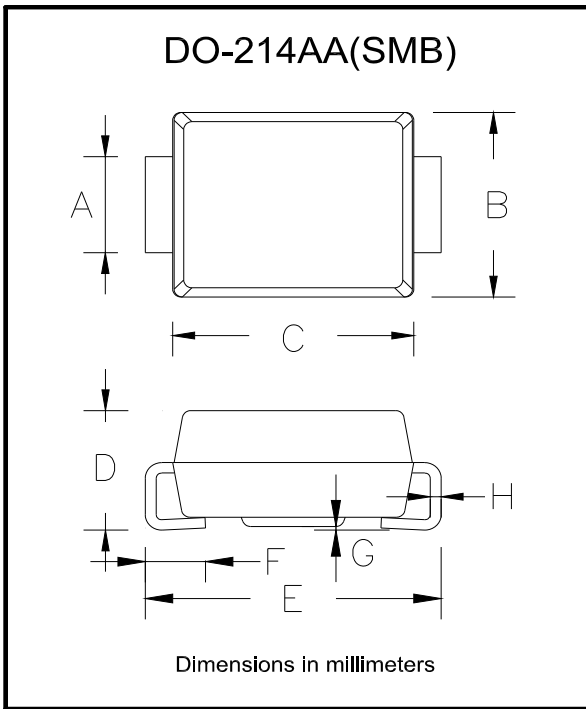
■ Ordering Information (Example)

PREFERRED P/N	PACKING CODE	UNIT WEIGHT(g)	MINIMUM PACKAGE(pcs)	INNER BOX QUANTITY(pcs)	OUTER CARTON QUANTITY(pcs)	DELIVERY MODE
SMB3ZXXA SERIES	F1	Approximate 0.096	3000	/	48000	13" reel
SMB3ZXXA SERIES	F2	Approximate 0.096	750	3000	24000	7" reel
SMB3ZXXA SERIES	F3	Approximate 0.096	500	2000	16000	7" reel



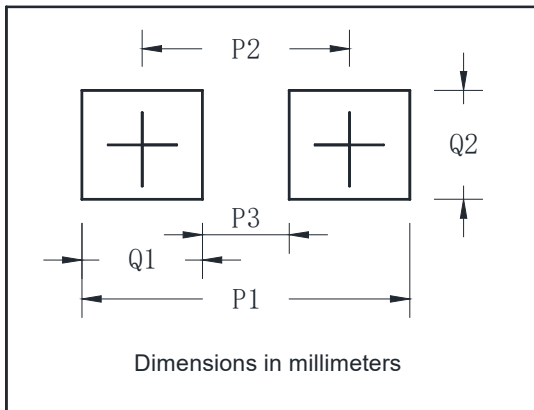
SMB3ZXXA SERIES

■ Outline Dimensions



DO-214AA(SMB)		
Dim	Min	Max
A	1.85	2.15
B	3.30	3.94
C	4.05	4.75
D	1.99	2.61
E	5.21	5.59
F	0.90	1.41
G	0.05	0.20
H	0.15	0.31

■ Suggested pad layout



DO-214AA(SMB)	
Dim	Millimeters
P1	6.8
P2	4.3
P3	1.8
Q1	2.5
Q2	2.3



SMB3ZXXA SERIES

Disclaimer

The information presented in this document is for reference only. Yangzhou Yangjie Electronic Technology Co., Ltd. reserves the right to make changes without notice for the specification of the products displayed herein to improve reliability, function or design or otherwise.

The product listed herein is designed to be used with ordinary electronic equipment or devices, and not designed to be used with equipment or devices which require high level of reliability and the malfunction of which would directly endanger human life (such as medical instruments, transportation equipment, aerospace machinery, nuclear-reactor controllers, fuel controllers and other safety devices), Yangjie or anyone on its behalf, assumes no responsibility or liability for any damages resulting from such improper use of sale.

This publication supersedes & replaces all information previously supplied. For additional information, please visit our website [http:// www.21yangjie.com](http://www.21yangjie.com) , or consult your nearest Yangjie's sales office for further assistance.

X-ON Electronics

Largest Supplier of Electrical and Electronic Components

Click to view similar products for [Zener Diodes](#) category:

Click to view products by [Yangjie](#) manufacturer:

Other Similar products are found below :

[RKZ13B2KG#P1](#) [DL5234B](#) [1N4682](#) [1N4693](#) [1N4732A](#) [1N4736A](#) [1N4750A](#) [1N4759ARL](#) [1N5241B](#) [1N5365B](#) [1N5369B](#) [1N747A](#)
[1N964B](#) [1N966B](#) [1N968B](#) [1N972B](#) [JANS1N4974US](#) [JANTX1N5907](#) [1N4692](#) [1N4702](#) [1N4704](#) [1N4711](#) [1N4714](#) [1N4745ARL](#)
[1N4752ARL](#) [1N4760ARL](#) [1N5221B](#) [1N5242BTR](#) [1N5350B](#) [1N5352B](#) [1N961BRR1](#) [1N964BRL](#) [RKZ5.1BKU#P6](#) [3SMAJ5946B-TP](#)
[3SMAJ5950B-TP](#) [MMSZ5230BQ-13-F](#) [MMSZ5232BQ-13-F](#) [BZX84C7V5](#) [3SMAJ5945B-TP](#) [3SMAJ5947B-TP](#) [3SMBJ5941B-TP](#)
[DZ2S240M0L](#) [SMAZ27-TP](#) [ZMM5224B-7](#) [RD16UM-T1-A](#) [RD10S-T1-A](#) [CDZT2R5.6B](#) [1N4762A G](#) [Z1SMA18](#) [JANTX1N4553B](#)