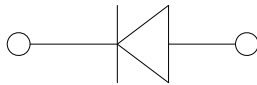
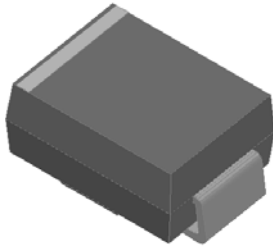
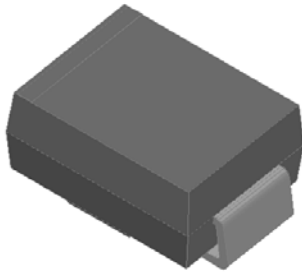


Surface Mount Transient Voltage Suppressors

Uni-directional



Bi-directional



Features

- For surface mounted applications
- Low-profile package
- Ideal for automated placement
- Available in Unidirectional and Bidirectional
- 600 W peak pulse power capability with a 10/1000 μ s waveform
- Low incremental surge resistance, excellent clamping capability
- Very fast response time
- High temperature soldering guaranteed: 260 °C/10 s at terminals
- Meets MSL level 1
- Component in accordance to RoHS 2002/95/EC and WEEE 2002/96/EC

Typical Applications

Use in sensitive electronics protection against voltage transients induced by inductive load switching and lighting on ICs, MOSFET, signal lines of sensor units for consumer, computer, industrial, telecommunication.

Mechanical Data

- **Package:** DO-214AA (SMB)
Molding compound meets UL 94 V-0 flammability rating, RoHS-compliant, halogen-free
- **Terminals:** Matte tin plated leads, solderable per J-STD-002B and JESD22-B102D
- **Polarity:** For uni-directional types the band denotes cathode end, no marking on bi-directional types

■Maximum Ratings (T_a=25°C Unless otherwise specified)

PARAMETER	SYMBOL	UNIT	Max
Peak power dissipation, with a 10/1000us waveform (1) (2) (Fig.1)	P _{PPM}	W	600
Peak pulse current, with a 10/1000us waveform(1)	I _{PPM}	A	See Next Table
Power dissipation, on infinite heat sink at TL=75°C	P _D	W	5.0
Peak forward surge current, 8.3 ms single half sine-wave unidirectional only (2)	I _{FSM}	A	100
Operating junction and storage temperature range	T _J , T _{STG}	°C	-55 to +150

■Electrical Characteristics (T_a=25°C Unless otherwise specified)

PARAMETER	SYMBOL	UNIT	VALUE
Maximum instantaneous forward voltage @ at 50A for unidirectional only (3)	V _F	V	3.5/5.0



SMBJ SERIES

■ Thermal Characteristics (T_A=25°C Unless otherwise specified)

PARAMETER	SYMBOL	UNIT	Conditions	VALUE
Thermal resistance(Typical)	R _{θJL}	°C/W	junction to lead	20
	R _{θJA}	°C/W	junction to ambient	100

Notes:

- (1) Non-repetitive current pulse, per Fig. 3 and derated above T_A = 25°C per Fig.2.
- (2) Mounted on 0.2 x 0.2" (5.0 x 5.0 mm) copper pads to each terminal.
- (3) V_F<3.5V for devices of V_{BR}<200V and V_F<5.0V for devices of V_{BR}>201V.

■ Ordering Information (Example)

PREFERRED P/N	PACKING CODE	UNIT WEIGHT(g)	MINIMUM PACKAGE(pcs)	INNER BOX QUANTITY(pcs)	OUTER CARTON QUANTITY(pcs)	DELIVERY MODE
SMBJ5.0-SMBJ400CA	F1	Approximate 0.0975	3000	6000	48000	13" reel
SMBJ5.0-SMBJ400CA	F2	Approximate 0.0975	750	3000	24000	7" reel
SMBJ5.0-SMBJ400CA	F3	Approximate 0.0975	500	2000	16000	7" reel

■ Electrical Characteristics (T_A=25°C Unless otherwise specified)

Part Number (Uni)	Part Number (Bi)	Breakdown Voltage V _{BR} @I _T			Maximum Reverse Leakage I _R ⁽⁶⁾ @ V _{RWM} (μA)	Working Peak Reverse Voltage V _{RWM} (V)	Maximum Reverse Surge Current I _{PP} ⁽⁵⁾ (A)	Maximum Clamping Voltage V _c @ I _{PP} (V)
		Min(V)	Max (V)	I _T ⁽⁴⁾ (mA)				
SMBJ5.0	SMBJ5.0C	6.40	7.30	10	800	5.0	62.50	9.6
SMBJ5.0A	SMBJ5.0CA ⁽⁴⁾	6.40	7.07	10	800	5.0	65.22	9.2
SMBJ6.0	SMBJ6.0C	6.67	8.15	10	800	6.0	52.63	11.4
SMBJ6.0A	SMBJ6.0CA	6.67	7.37	10	800	6.0	58.25	10.3
SMBJ6.5	SMBJ6.5C	7.22	8.82	10	500	6.5	48.78	12.3
SMBJ6.5A	SMBJ6.5CA	7.22	7.98	10	500	6.5	53.57	11.2
SMBJ7.0	SMBJ7.0C	7.78	9.51	10	200	7.0	45.11	13.3
SMBJ7.0A	SMBJ7.0CA	7.78	8.60	10	200	7.0	50.00	12.0
SMBJ7.5	SMBJ7.5C	8.33	10.20	1	100	7.5	41.96	14.3
SMBJ7.5A	SMBJ7.5CA	8.33	9.21	1	100	7.5	46.51	12.9
SMBJ8.0	SMBJ8.0C	8.89	10.90	1	50	8.0	40.00	15.0
SMBJ8.0A	SMBJ8.0CA	8.89	9.83	1	50	8.0	44.12	13.6
SMBJ8.5	SMBJ8.5C	9.44	11.50	1	10	8.5	37.74	15.9
SMBJ8.5A	SMBJ8.5CA	9.44	10.40	1	10	8.5	41.67	14.4
SMBJ9.0	SMBJ9.0C	10.00	12.20	1	5	9.0	35.50	16.9
SMBJ9.0A	SMBJ9.0CA	10.00	11.10	1	5	9.0	38.96	15.4
SMBJ10	SMBJ10C	11.10	13.60	1	5	10.0	31.91	18.8
SMBJ10A	SMBJ10CA	11.10	12.30	1	5	10.0	35.29	17.0
SMBJ11	SMBJ11C	12.20	14.90	1	5	11.0	29.85	20.1
SMBJ11A	SMBJ11CA	12.20	13.50	1	5	11.0	32.97	18.2
SMBJ12	SMBJ12C	13.30	16.30	1	5	12.0	27.27	22.0
SMBJ12A	SMBJ12CA	13.30	14.70	1	5	12.0	30.15	19.9
SMBJ13	SMBJ13C	14.40	17.60	1	5	13.0	25.21	23.8
SMBJ13A	SMBJ13CA	14.40	15.90	1	5	13.0	27.91	21.5



SMBJ SERIES

■Electrical Characteristics (T_a=25°C Unless otherwise specified)

Part Number (Uni)	Part Number (Bi)	Breakdown Voltage V _{BR} @I _T			Maximum Reverse Leakage I _R ⁽⁶⁾ @ V _{RWM} (μA)	Working Peak Reverse Voltage V _{RWM} (V)	Maximum Reverse Surge Current I _{PP} ⁽⁵⁾ (A)	Maximum Clamping Voltage V _c @ I _{PP} (V)
		Min(V)	Max (V)	I _T ⁽⁴⁾ (mA)				
SMBJ14	SMBJ14C	15.60	19.10	1	5	14.0	23.26	25.8
SMBJ14A	SMBJ14CA	15.60	17.20	1	5	14.0	25.86	23.2
SMBJ15	SMBJ15C	16.70	20.40	1	5	15.0	22.30	26.9
SMBJ15A	SMBJ15CA	16.70	18.50	1	5	15.0	24.59	24.4
SMBJ16	SMBJ16C	17.80	21.80	1	5	16.0	20.83	28.8
SMBJ16A	SMBJ16CA	17.80	19.70	1	5	16.0	23.08	26.0
SMBJ17	SMBJ17C	18.90	23.10	1	5	17.0	19.67	30.5
SMBJ17A	SMBJ17CA	18.90	20.90	1	5	17.0	21.74	27.6
SMBJ18	SMBJ18C	20.00	24.40	1	5	18.0	18.63	32.2
SMBJ18A	SMBJ18CA	20.00	22.10	1	5	18.0	20.55	29.2
SMBJ19	SMBJ19C	21.10	25.70	1	5	19.0	17.64	34.0
SMBJ19A	SMBJ19CA	21.10	23.30	1	5	19.0	19.49	30.8
SMBJ20	SMBJ20C	22.20	27.10	1	5	20.0	16.76	35.8
SMBJ20A	SMBJ20CA	22.20	24.50	1	5	20.0	18.52	32.4
SMBJ22	SMBJ22C	24.40	29.80	1	5	22.0	15.23	39.4
SMBJ22A	SMBJ22CA	24.40	26.90	1	5	22.0	16.90	35.5
SMBJ24	SMBJ24C	26.70	32.60	1	5	24.0	13.95	43.0
SMBJ24A	SMBJ24CA	26.70	29.50	1	5	24.0	15.42	38.9
SMBJ26	SMBJ26C	28.90	35.30	1	5	26.0	12.88	46.6
SMBJ26A	SMBJ26CA	28.90	31.90	1	5	26.0	14.25	42.1
SMBJ28	SMBJ28C	31.10	38.00	1	5	28.0	12.00	50.0
SMBJ28A	SMBJ28CA	31.10	34.40	1	5	28.0	13.22	45.4
SMBJ30	SMBJ30C	33.30	40.70	1	5	30.0	11.21	53.5
SMBJ30A	SMBJ30CA	33.30	36.80	1	5	30.0	12.40	48.4
SMBJ33	SMBJ33C	36.70	44.90	1	5	33.0	10.17	59.0
SMBJ33A	SMBJ33CA	36.70	40.60	1	5	33.0	11.26	53.3
SMBJ36	SMBJ36C	40.00	48.90	1	5	36.0	9.33	64.3
SMBJ36A	SMBJ36CA	40.00	44.20	1	5	36.0	10.33	58.1
SMBJ40	SMBJ40C	44.40	54.30	1	5	40.0	8.40	71.4
SMBJ40A	SMBJ40CA	44.40	49.10	1	5	40.0	9.30	64.5
SMBJ43	SMBJ43C	47.80	58.40	1	5	43.0	7.82	76.7
SMBJ43A	SMBJ43CA	47.80	52.80	1	5	43.0	8.65	69.4
SMBJ45	SMBJ45C	50.00	61.10	1	5	45.0	7.47	80.3
SMBJ45A	SMBJ45CA	50.00	55.30	1	5	45.0	8.25	72.7
SMBJ48	SMBJ48C	53.30	65.10	1	5	48.0	7.02	85.5
SMBJ48A	SMBJ48CA	53.30	58.90	1	5	48.0	7.75	77.4
SMBJ51	SMBJ51C	56.70	69.30	1	5	51.0	6.59	91.1
SMBJ51A	SMBJ51CA	56.70	62.70	1	5	51.0	7.28	82.4
SMBJ54	SMBJ54C	60.00	73.30	1	5	54.0	6.23	96.3
SMBJ54A	SMBJ54CA	60.00	66.30	1	5	54.0	6.89	87.1
SMBJ58	SMBJ58C	64.40	78.70	1	5	58.0	5.83	103.0



SMBJ SERIES

■Electrical Characteristics (T_a=25°C Unless otherwise specified)

Part Number (Uni)	Part Number (Bi)	Breakdown Voltage V _{BR} @I _T			Maximum Reverse Leakage I _R ⁽⁶⁾ @ V _{RWM} (μA)	Working Peak Reverse Voltage V _{RWM} (V)	Maximum Reverse Surge Current I _{PP} ⁽⁵⁾ (A)	Maximum Clamping Voltage V _c @ I _{PP} (V)
		Min(V)	Max (V)	I _T ⁽⁴⁾ (mA)				
SMBJ58A	SMBJ58CA	64.40	71.20	1	5	58.0	6.41	93.6
SMBJ60	SMBJ60C	66.70	81.50	1	5	60.0	5.61	107.0
SMBJ60A	SMBJ60CA	66.70	73.70	1	5	60.0	6.20	96.8
SMBJ64	SMBJ64C	71.10	86.90	1	5	64.0	5.26	114.0
SMBJ64A	SMBJ64CA	71.10	78.60	1	5	64.0	5.83	103.0
SMBJ70	SMBJ70C	77.80	95.10	1	5	70.0	4.80	125.0
SMBJ70A	SMBJ70CA	77.80	86.00	1	5	70.0	5.31	113.0
SMBJ75	SMBJ75C	83.30	102.00	1	5	75.0	4.48	134.0
SMBJ75A	SMBJ75CA	83.30	92.10	1	5	75.0	4.96	121.0
SMBJ78	SMBJ78C	86.70	106.00	1	5	78.0	4.32	139.0
SMBJ78A	SMBJ78CA	86.70	95.80	1	5	78.0	4.76	126.0
SMBJ80	SMBJ80C	88.90	108.80	1	5	80.0	4.19	143.2
SMBJ80A	SMBJ80CA	88.80	97.60	1	5	80.0	4.63	129.6
SMBJ85	SMBJ85C	94.40	115.00	1	5	85.0	3.97	151.0
SMBJ85A	SMBJ85CA	94.40	104.00	1	5	85.0	4.38	137.0
SMBJ90	SMBJ90C	100.00	122.00	1	5	90.0	3.75	160.0
SMBJ90A	SMBJ90CA	100.00	111.00	1	5	90.0	4.11	146.0
SMBJ100	SMBJ100C	111.00	136.00	1	5	100.0	3.35	179.0
SMBJ100A	SMBJ100CA	111.00	123.00	1	5	100.0	3.70	162.0
SMBJ110	SMBJ110C	122.00	149.00	1	5	110.0	3.06	196.0
SMBJ110A	SMBJ110CA	122.00	135.00	1	5	110.0	3.39	177.0
SMBJ120	SMBJ120C	133.00	163.00	1	5	120.0	2.80	214.0
SMBJ120A	SMBJ120CA	133.00	147.00	1	5	120.0	3.11	193.0
SMBJ130	SMBJ130CA	144.00	176.00	1	5	130.0	2.60	231.0
SMBJ130A	SMBJ130CA	144.00	159.00	1	5	130.0	2.87	209.0
SMBJ140	SMBJ140C	155.70	190.40	1	5	140.0	2.39	250.6
SMBJ140A	SMBJ140CA	155.00	171.00	1	5	140.0	2.65	226.8
SMBJ150	SMBJ150C	167.00	204.00	1	5	150.0	2.24	268.0
SMBJ150A	SMBJ150CA	167.00	185.00	1	5	150.0	2.47	243.0
SMBJ160	SMBJ160C	178.00	218.00	1	5	160.0	2.09	287.0
SMBJ160A	SMBJ160CA	178.00	197.00	1	5	160.0	2.32	259.0
SMBJ170	SMBJ170C	189.00	231.00	1	5	170.0	1.97	304.0
SMBJ170A	SMBJ170CA	189.00	209.00	1	5	170.0	2.18	275.0
SMBJ180	SMBJ180C	200.20	244.80	1	5	180.0	1.86	322.2
SMBJ180A	SMBJ180CA	200.00	220.00	1	5	180.0	2.06	291.6
SMBJ190	SMBJ190C	211.30	258.40	1	5	190.0	1.76	340.1
SMBJ190A	SMBJ190CA	211.00	232.00	1	5	190.0	1.95	307.8
SMBJ200A	SMBJ200CA	224.00	247.00	1	5	200.0	1.85	324.0
SMBJ220A	SMBJ220CA	246.00	272.00	1	5	220.0	1.69	356.0
SMBJ250A	SMBJ250CA	279.00	309.00	1	5	250.0	1.48	405.0
SMBJ300A	SMBJ300CA	335.00	371.00	1	5	300.0	1.23	486.0



SMBJ SERIES

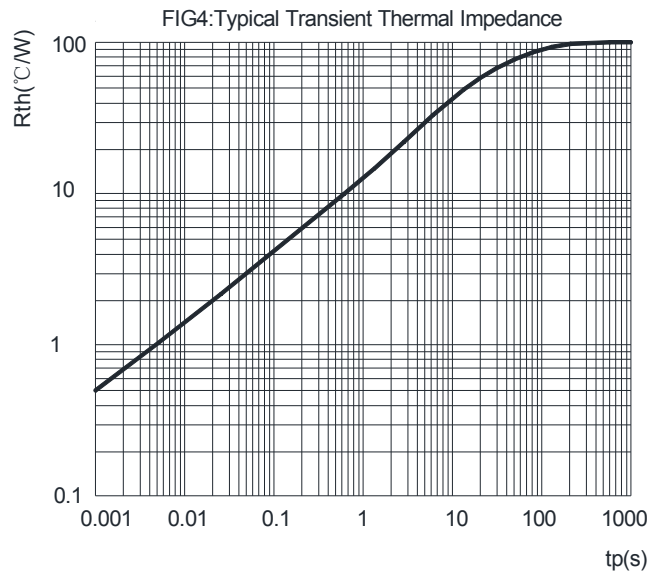
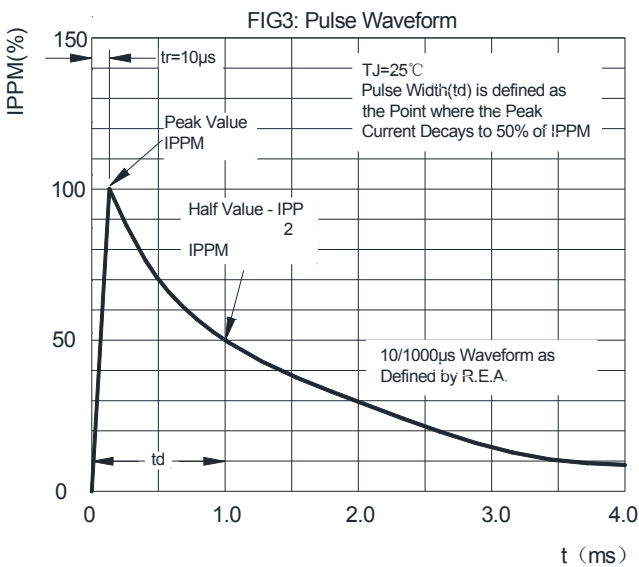
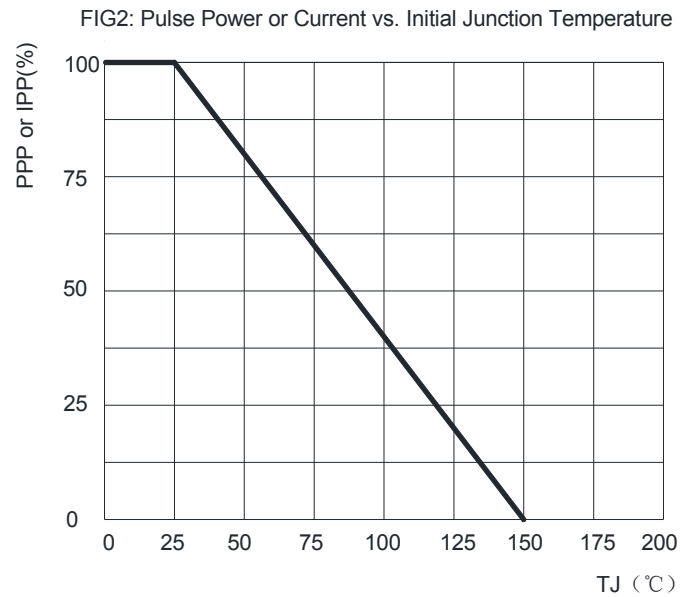
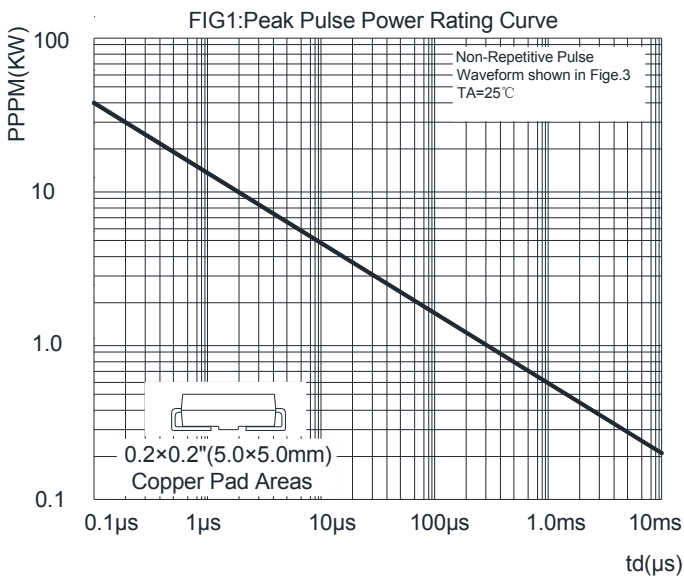
■ Electrical Characteristics (T_a=25°C Unless otherwise specified)

Part Number (Uni)	Part Number (Bi)	Breakdown Voltage V _{BR} @I _T			Maximum Reverse Leakage I _R ⁽⁶⁾ @ V _{RWM} (μA)	Working Peak Reverse Voltage V _{RWM} (V)	Maximum Reverse Surge Current I _{PP} ⁽⁵⁾ (A)	Maximum Clamping Voltage V _c @ I _{PP} (V)
		Min(V)	Max (V)	I _T ⁽⁴⁾ (mA)				
SMBJ350A	SMBJ350CA	391.00	432.00	1	5	350.0	1.06	567.0
SMBJ400A	SMBJ400CA	447.00	494.00	1	5	400.0	0.93	648.0
SMBJ440A	SMBJ440CA	492.00	543.00	1	5	440.0	0.84	713.0

Notes:

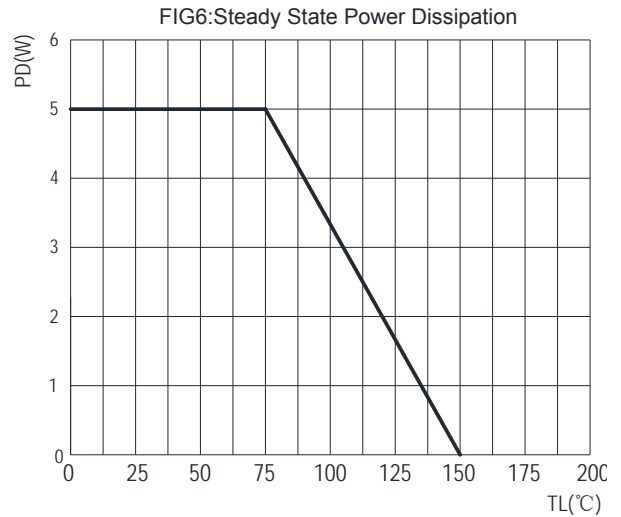
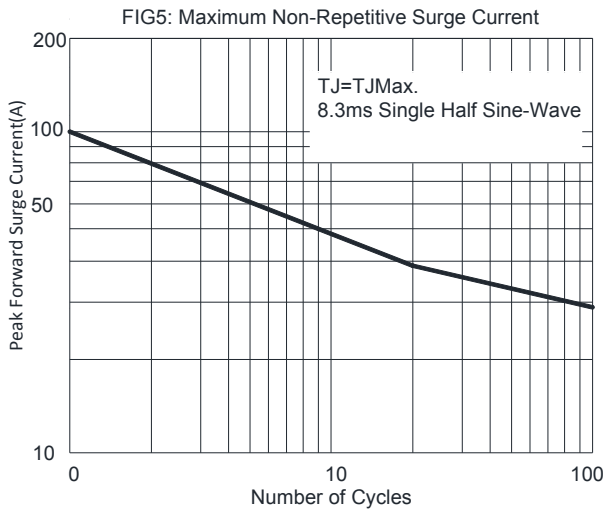
- (4) Pulse test: t_p≤50ms.
- (5) Surge current waveform per Fig. 3 and derated per Fig.2.
- (6) For bi-directional types having V_{RWM} of 10 V and less, the I_R limit is doubled.
- (7) For the bi-directional SMBJ5.0CA, the maximum V_{BR} is 7.25 V.

■ Characteristics (Typical)

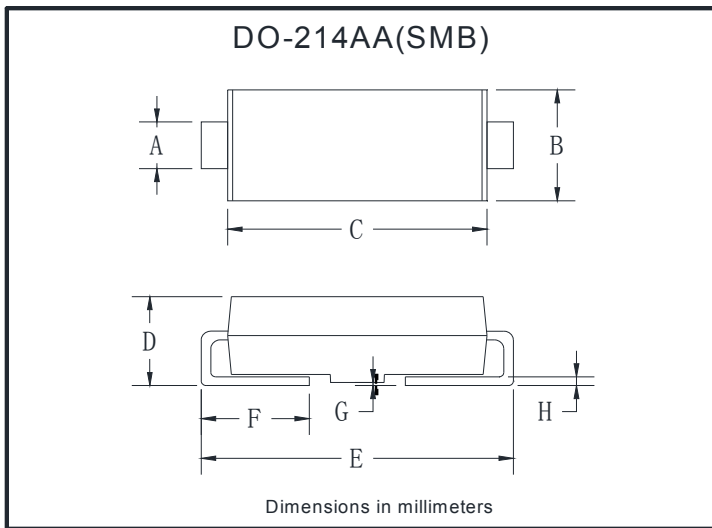




SMBJ SERIES

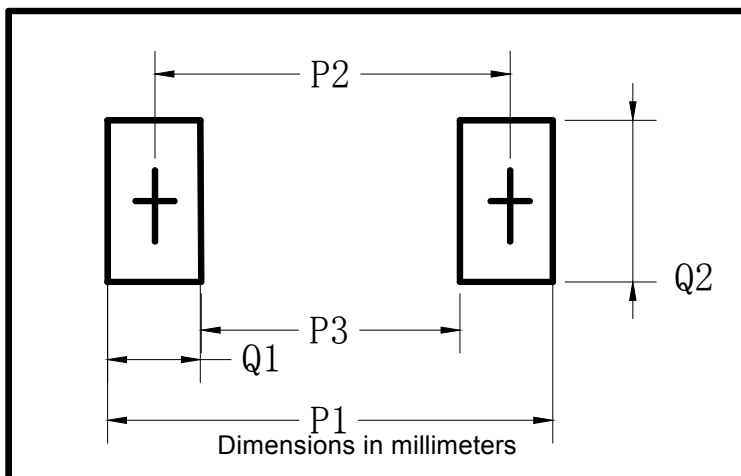


■ Outline Dimensions



DO-214AA(SMB)		
Dim	Min	Max
A	1.85	2.15
B	3.30	3.94
C	4.25	4.75
D	1.99	2.61
E	5.21	5.59
F	0.90	1.41
G	0.10	0.20
H	0.15	0.31

■ Suggested pad layout



DO-214AA(SMB)	
Dim	Millimeters
P1	6.8
P2	4.3
P3	1.8
Q1	2.5
Q2	2.3



SMBJ SERIES

Disclaimer

The information presented in this document is for reference only. Yangzhou Yangjie Electronic Technology Co., Ltd. reserves the right to make changes without notice for the specification of the products displayed herein to improve reliability, function or design or otherwise.

The product listed herein is designed to be used with ordinary electronic equipment or devices, and not designed to be used with equipment or devices which require high level of reliability and the malfunction of which would directly endanger human life (such as medical instruments, transportation equipment, aerospace machinery, nuclear-reactor controllers, fuel controllers and other safety devices), Yangjie or anyone on its behalf, assumes no responsibility or liability for any damages resulting from such improper use of sale.

This publication supersedes & replaces all information previously supplied. For additional information, please visit our website [http:// www.21yangjie.com](http://www.21yangjie.com) , or consult your nearest Yangjie's sales office for further assistance.

X-ON Electronics

Largest Supplier of Electrical and Electronic Components

Click to view similar products for [ESD Suppressors / TVS Diodes](#) category:

Click to view products by [Yangjie](#) manufacturer:

Other Similar products are found below :

[NTE4902](#) [P4SMAJ15A](#) [P4SMAJ26A](#) [SMAJ400CA-TP](#) [TGL34-47CA](#) [ESDAULC45-1BF4](#) [SM1605E3/TR13](#) [SMF20A-TP](#) [P4SMAJ12A](#)
[CPDUR24V-HF](#) [CPDQC5V0USP-HF](#) [CPDQC5V0-HF](#) [MPLAD30KP280A](#) [MPLAD30KP45CAE3](#) [MMBZ27VCLQ-7-F](#) [MMAD1108/TR13](#)
[MPLAD30KP24A](#) [MPLAD30KP30CAE3](#) [ACPDQC5V0R-HF](#) [DFLT170A-7](#) [NTE4900](#) [NTE4926](#) [NTE4938](#) [JANTX1N6144A](#)
[JANTX1N6057A](#) [SMF22A-TP](#) [SMF12A-TP](#) [SLVU2.8-TP](#) [SMLJ6.5CA-TP](#) [SMAJ6.5CA-TP](#) [MMAD1108E3/TR13](#) [JANTX1N6160A](#)
[D5V0M1U2LP3-7](#) [SMAJ400A-TP](#) [AOZ8811DT-03](#) [AOZ8831DI-05](#) [AOZ8831DT-03](#) [SMAJ188CA](#) [3SMC33CA BK](#) [CPDQC3V3C-HF](#)
[CPDQC12VE-HF](#) [GRPADATAJANTX1N6041A](#) [MPLAD30KP170CA](#) [82357120100](#) [5.0SMLJ15CA-TP](#) [5KP18A-TP](#) [P6KE8.2A-TP](#)
[MPLAD30KP43CAE3](#) [SMAJ43A-TP](#) [D26V0H1U2LP16-7](#)