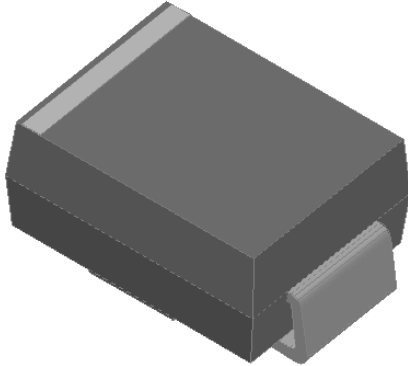


## Surface Mount Transient Voltage Suppressors

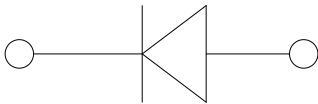


### Features

- Low profile package
- Ideal for automated placement
- Glass passivated chip junction
- Available in Unidirectional and Bidirectional
- 600 W peak pulse power capability with a 10/1000  $\mu$ s waveform, repetitive rate (duty cycle): 0.01 %
- Excellent clamping capability
- Very fast response time
- Low incremental surge resistance
- Meets MSL level 1, per J-STD-020C, LF max peak of 260 °C
- Solder Dip 260 °C, 10 seconds
- Component in accordance to RoHS 2002/95/EC and WEEE 2002/96/EC

### Typical Applications

Use in sensitive electronics protection against voltage transients induced by inductive load switching and lighting on ICs, MOSFET, signal lines of sensor units for consumer, computer, industrial, telecommunication.



### Mechanical Data

- **Package:** DO-214AA (SMB)  
Molding compound meets UL 94 V-0 flammability rating, RoHS-compliant, halogen-free
- **Terminals:** Matte tin plated leads, solderable per J-STD-002B and JESD22-B102D
- **Polarity:** Color band denotes cathode end

### ■Maximum Ratings ( $T_a=25^\circ\text{C}$ Unless otherwise specified)

| PARAMETER  | SYMBOL         | UNIT             | Max            |
|--|----------------|------------------|----------------|
| Peak power dissipation, with a 10/1000us waveform (1) (2) (Fig.1)                | PPPM           | W                | 600            |
| Peak pulse current, with a 10/1000us waveform(1)                                 | IPPM           | A                | See Next Table |
| Power dissipation, on infinite heat sink at $T_L=75^\circ\text{C}$               | PD             | W                | 5.0            |
| Peak forward surge current, 8.3 ms single half sine-wave unidirectional only (2) | IFSM           | A                | 100            |
| Operating junction and storage temperature range                                 | $T_J, T_{STG}$ | $^\circ\text{C}$ | -55 to +150    |

### ■Electrical Characteristics ( $T_a=25^\circ\text{C}$ Unless otherwise specified)

| PARAMETER   | SYMBOL | UNIT | VALUE   |
|---|--------|------|---------|
| Maximum instantaneous forward voltage<br>@ at 50A for unidirectional only (3) | VF     | V    | 3.5/5.0 |



# SMBJ SERIES

## ■ Thermal Characteristics (T<sub>a</sub>=25°C Unless otherwise specified)

| PARAMETER                   | SYMBOL           | UNIT | Conditions          | VALUE |
|-----------------------------|------------------|------|---------------------|-------|
| Thermal resistance(Typical) | R <sub>θJL</sub> | °C/W | junction to lead    | 20    |
|                             | R <sub>θJA</sub> | °C/W | junction to ambient | 100   |

Notes:

- (1) Non-repetitive current pulse, per Fig. 3 and derated above T<sub>A</sub>= 25°C per Fig.2.
- (2) Mounted on 0.2 x 0.2" (5.0 x 5.0 mm) copper pads to each terminal
- (3) VF<3.5V for devices of VBR<200V and VF<5.0V for devices of VBR>201V

## ■ Ordering Information (Example)

| PREFERRED P/N     | PACKING CODE | UNIT WEIGHT(g)     | MINIMUM PACKAGE(pcs) | INNER BOX QUANTITY(pcs) | OUTER CARTON QUANTITY(pcs) | DELIVERY MODE |
|-------------------|--------------|--------------------|----------------------|-------------------------|----------------------------|---------------|
| SMBJ5.0-SMBJ400CA | F1           | Approximate 0.0975 | 3000                 | 6000                    | 48000                      | 13" reel      |
| SMBJ5.0-SMBJ400CA | F2           | Approximate 0.0975 | 750                  | 3000                    | 24000                      | 7" reel       |
| SMBJ5.0-SMBJ400CA | F3           | Approximate 0.0975 | 500                  | 2000                    | 16000                      | 7" reel       |

## ■ Electrical Characteristics (T<sub>a</sub>=25°C Unless otherwise specified)

| Part Number(Uni) | Part Number(Bi)          | Breakdown Voltage V <sub>BR</sub> @I <sub>T</sub> |         |                        | Maximum Reverse Leakage I <sub>R</sub> @ V <sub>WM</sub> <sup>(6)</sup> (μA) | Working Peak Reverse Voltage V <sub>RWM</sub> (V) | Maximum Reverse Surge Current IPP <sup>(5)</sup> (A) | Maximum Clamping Voltage Vc @ I <sub>PP</sub> (V) |
|------------------|--------------------------|---|---------|------------------------|--|---|--|---|
|                  |                          | Min(V)  | Max (V) | IT <sup>(4)</sup> (mA) |  |   |  |   |
| SMBJ5.0          | SMBJ5.0C                 | 6.40  | 7.30    | 10                     | 800  | 5.0   | 62.5   | 9.6   |
| SMBJ5.0A         | SMBJ5.0CA <sup>(4)</sup> | 6.40  | 7.07    | 10                     | 800  | 5.0   | 65.2   | 9.2   |
| SMBJ6.0          | SMBJ6.0C                 | 6.67  | 8.15    | 10                     | 800  | 6.0   | 52.6   | 11.4  |
| SMBJ6.0A         | SMBJ6.0CA                | 6.67  | 7.37    | 10                     | 800  | 6.0   | 58.3   | 10.3  |
| SMBJ6.5          | SMBJ6.5C                 | 7.22  | 8.82    | 10                     | 500  | 6.5   | 48.8   | 12.3  |
| SMBJ6.5A         | SMBJ6.5CA                | 7.22  | 7.98    | 10                     | 500  | 6.5   | 53.6   | 11.2  |
| SMBJ7.0          | SMBJ7.0C                 | 7.78  | 9.51    | 10                     | 200  | 7.0   | 45.1   | 13.3  |
| SMBJ7.0A         | SMBJ7.0CA                | 7.78  | 8.60    | 10                     | 200  | 7.0   | 50.0   | 12.0  |
| SMBJ7.5          | SMBJ7.5C                 | 8.33  | 10.20   | 1.0                    | 100  | 7.5   | 42.0   | 14.3  |
| SMBJ7.5A         | SMBJ7.5CA                | 8.33  | 9.21    | 1.0                    | 100  | 7.5   | 46.5   | 12.9  |
| SMBJ8.0          | SMBJ8.0C                 | 8.89  | 10.90   | 1.0                    | 50   | 8.0   | 40.0   | 15.0  |
| SMBJ8.0A         | SMBJ8.0CA                | 8.89  | 9.83    | 1.0                    | 50   | 8.0   | 44.1   | 13.6  |
| SMBJ8.5          | SMBJ8.5C                 | 9.44  | 11.50   | 1.0                    | 10   | 8.5   | 37.7   | 15.9  |
| SMBJ8.5A         | SMBJ8.5CA                | 9.44  | 10.4    | 1.0                    | 10   | 8.5   | 41.7   | 14.4  |
| SMBJ9.0          | SMBJ9.0C                 | 10.00   | 12.20   | 1.0                    | 5.0  | 9.0   | 35.5   | 16.9  |
| SMBJ9.0A         | SMBJ9.0CA                | 10.00   | 11.10   | 1.0                    | 5.0  | 9.0   | 39.0   | 15.4  |
| SMBJ10           | SMBJ10C                  | 11.10   | 13.60   | 1.0                    | 5.0  | 10.0  | 31.9   | 18.8  |
| SMBJ10A          | SMBJ10CA                 | 11.10   | 12.30   | 1.0                    | 5.0  | 10.0  | 35.3   | 17.0  |
| SMBJ11           | SMBJ11C                  | 12.20   | 14.90   | 1.0                    | 5.0  | 11.0  | 29.8   | 20.1  |
| SMBJ11A          | SMBJ11CA                 | 12.20   | 13.50   | 1.0                    | 5.0  | 11.0  | 33.0   | 18.2  |
| SMBJ12           | SMBJ12C                  | 13.30   | 16.30   | 1.0                    | 5.0  | 12.0  | 27.3   | 22.0  |
| SMBJ12A          | SMBJ12CA                 | 13.30   | 14.70   | 1.0                    | 5.0  | 12.0  | 30.2   | 19.9  |
| SMBJ13           | SMBJ13C                  | 14.40   | 17.60   | 1.0                    | 5.0  | 13.0  | 25.2   | 23.8  |
| SMBJ13A          | SMBJ13CA                 | 14.40   | 15.90   | 1.0                    | 5.0  | 13.0  | 27.9   | 21.5  |



# SMBJ SERIES

## ■Electrical Characteristics (T<sub>a</sub>=25°C Unless otherwise specified)

| Part Number(Uni) | Part Number(Bi) | Breakdown Voltage V <sub>BR</sub> @I <sub>T</sub> |         |                        | Maximum Reverse Leakage I <sub>R</sub> @ V <sub>WM</sub> <sup>(6)</sup> (μA) | Working Peak Reverse Voltage V <sub>RWM</sub> (V) | Maximum Reverse Surge Current IPP <sup>(5)</sup> (A)<br>Min(V) | Maximum Clamping Voltage V <sub>c</sub> @ I <sub>FP</sub> (V)<br>Max (V) |
|------------------|-----------------|---|---------|------------------------|--|---|--|--|
|                  |                 | Min(V)  | Max (V) | IT <sup>(4)</sup> (mA) |  |   |  |  |
| SMBJ14           | SMBJ14C         | 15.60   | 19.10   | 1.0                    | 5.0  | 14.0  | 23.2   | 25.8   |
| SMBJ14A          | SMBJ14CA        | 15.60   | 17.20   | 1.0                    | 5.0  | 14.0  | 25.9   | 23.2   |
| SMBJ15           | SMBJ15C         | 16.70   | 20.40   | 1.0                    | 5.0  | 15.0  | 22.3   | 26.9   |
| SMBJ15A          | SMBJ15CA        | 16.70   | 18.50   | 1.0                    | 5.0  | 15.0  | 24.6   | 24.4   |
| SMBJ16           | SMBJ16C         | 17.80   | 21.80   | 1.0                    | 5.0  | 16.0  | 20.8   | 28.8   |
| SMBJ16A          | SMBJ16CA        | 17.80   | 19.70   | 1.0                    | 5.0  | 16.0  | 23.1   | 26.0   |
| SMBJ17           | SMBJ17C         | 18.90   | 23.10   | 1.0                    | 5.0  | 17.0  | 19.6   | 30.5   |
| SMBJ17A          | SMBJ17CA        | 18.90   | 20.90   | 1.0                    | 5.0  | 17.0  | 21.7   | 27.6   |
| SMBJ18           | SMBJ18C         | 20.00   | 24.40   | 1.0                    | 5.0  | 18.0  | 18.6   | 32.2   |
| SMBJ18A          | SMBJ18CA        | 20.00   | 22.10   | 1.0                    | 5.0  | 18.0  | 20.5   | 29.2   |
| SMBJ19           | SMBJ19C         | 21.10   | 25.70   | 1.0                    | 5.0  | 19.0  | 17.6   | 34.0   |
| SMBJ19A          | SMBJ19CA        | 21.10   | 23.30   | 1.0                    | 5.0  | 19.0  | 19.5   | 30.8   |
| SMBJ20           | SMBJ20C         | 22.20   | 27.10   | 1.0                    | 5.0  | 20.0  | 16.7   | 35.8   |
| SMBJ20A          | SMBJ20CA        | 22.20   | 24.50   | 1.0                    | 5.0  | 20.0  | 18.5   | 32.4   |
| SMBJ22           | SMBJ22C         | 24.40   | 29.80   | 1.0                    | 5.0  | 22.0  | 15.2   | 39.4   |
| SMBJ22A          | SMBJ22CA        | 24.40   | 26.90   | 1.0                    | 5.0  | 22.0  | 16.9   | 35.5   |
| SMBJ24           | SMBJ24C         | 26.70   | 32.60   | 1.0                    | 5.0  | 24.0  | 14.0   | 43.0   |
| SMBJ24A          | SMBJ24CA        | 26.70   | 29.50   | 1.0                    | 5.0  | 24.0  | 15.4   | 38.9   |
| SMBJ26           | SMBJ26C         | 28.90   | 35.30   | 1.0                    | 5.0  | 26.0  | 12.9   | 46.6   |
| SMBJ26A          | SMBJ26CA        | 28.90   | 31.90   | 1.0                    | 5.0  | 26.0  | 14.3   | 42.1   |
| SMBJ28           | SMBJ28C         | 31.10   | 38.00   | 1.0                    | 5.0  | 28.0  | 12.0   | 50.0   |
| SMBJ28A          | SMBJ28CA        | 31.10   | 34.40   | 1.0                    | 5.0  | 28.0  | 13.2   | 45.4   |
| SMBJ30           | SMBJ30C         | 33.30   | 40.70   | 1.0                    | 5.0  | 30.0  | 11.2   | 53.5   |
| SMBJ30A          | SMBJ30CA        | 33.30   | 36.80   | 1.0                    | 5.0  | 30.0  | 12.4   | 48.4   |
| SMBJ33           | SMBJ33C         | 36.70   | 44.90   | 1.0                    | 5.0  | 33.0  | 10.2   | 59.0   |
| SMBJ33A          | SMBJ33CA        | 36.70   | 40.60   | 1.0                    | 5.0  | 33.0  | 11.3   | 53.3   |
| SMBJ36           | SMBJ36C         | 40.00   | 48.90   | 1.0                    | 5.0  | 36.0  | 9.3  | 64.3   |
| SMBJ36A          | SMBJ36CA        | 40.00   | 44.20   | 1.0                    | 5.0  | 36.0  | 10.3   | 58.1   |
| SMBJ40           | SMBJ40C         | 44.40   | 54.30   | 1.0                    | 5.0  | 40.0  | 8.4  | 71.4   |
| SMBJ40A          | SMBJ40CA        | 44.40   | 49.10   | 1.0                    | 5.0  | 40.0  | 9.3  | 64.5   |
| SMBJ43           | SMBJ43C         | 47.80   | 58.40   | 1.0                    | 5.0  | 43.0  | 7.8  | 76.7   |
| SMBJ43A          | SMBJ43CA        | 47.80   | 52.80   | 1.0                    | 5.0  | 43.0  | 8.6  | 69.4   |
| SMBJ45           | SMBJ45C         | 50.00   | 61.10   | 1.0                    | 5.0  | 45.0  | 7.5  | 80.3   |
| SMBJ45A          | SMBJ45CA        | 50.00   | 55.30   | 1.0                    | 5.0  | 45.0  | 8.3  | 72.7   |
| SMBJ48           | SMBJ48C         | 53.30   | 65.10   | 1.0                    | 5.0  | 48.0  | 7.0  | 85.5   |
| SMBJ48A          | SMBJ48CA        | 53.30   | 58.90   | 1.0                    | 5.0  | 48.0  | 7.8  | 77.4   |
| SMBJ51           | SMBJ51C         | 56.70   | 69.30   | 1.0                    | 5.0  | 51.0  | 6.6  | 91.1   |
| SMBJ51A          | SMBJ51CA        | 56.70   | 62.70   | 1.0                    | 5.0  | 51.0  | 7.3  | 82.4   |
| SMBJ54           | SMBJ54C         | 60.00   | 73.30   | 1.0                    | 5.0  | 54.0  | 6.2  | 96.3   |
| SMBJ54A          | SMBJ54CA        | 60.00   | 66.30   | 1.0                    | 5.0  | 54.0  | 6.9  | 87.1   |
| SMBJ58           | SMBJ58C         | 64.40   | 78.70   | 1.0                    | 5.0  | 58.0  | 5.8  | 103.0  |



# SMBJ SERIES

## ■Electrical Characteristics (T<sub>a</sub>=25°C Unless otherwise specified)

| Part Number(Uni) | Part Number(Bi) | Breakdown Voltage V <sub>BR</sub> @I <sub>T</sub> |         |                        | Maximum Reverse Leakage I <sub>R</sub> @ V <sub>WM</sub> <sup>(6)</sup> (μA) | Working Peak Reverse Voltage V <sub>RWM</sub> (V) | Maximum Reverse Surge Current IPP <sup>(5)</sup> (A)<br>Min(V) | Maximum Clamping Voltage V <sub>c</sub> @ I <sub>PP</sub> (V)<br>Max (V) |
|------------------|-----------------|---|---------|------------------------|--|---|--|--|
|                  |                 | Min(V)  | Max (V) | IT <sup>(4)</sup> (mA) |  |   |  |  |
| SMBJ58A          | SMBJ58CA        | 64.40   | 71.20   | 1.0                    | 5.0  | 58.0  | 6.4  | 93.6   |
| SMBJ60           | SMBJ60C         | 66.70   | 81.50   | 1.0                    | 5.0  | 60.0  | 5.6  | 107.0  |
| SMBJ60A          | SMBJ60CA        | 66.70   | 73.70   | 1.0                    | 5.0  | 60.0  | 6.2  | 96.8   |
| SMBJ64           | SMBJ64C         | 71.10   | 86.90   | 1.0                    | 5.0  | 64.0  | 5.2  | 114.0  |
| SMBJ64A          | SMBJ64CA        | 71.10   | 78.60   | 1.0                    | 5.0  | 64.0  | 5.8  | 103.0  |
| SMBJ70           | SMBJ70C         | 77.80   | 95.10   | 1.0                    | 5.0  | 70.0  | 4.8  | 125.0  |
| SMBJ70A          | SMBJ70CA        | 77.80   | 86.00   | 1.0                    | 5.0  | 70.0  | 5.3  | 113.0  |
| SMBJ75           | SMBJ75C         | 83.30   | 102.00  | 1.0                    | 5.0  | 75.0  | 4.5  | 134.0  |
| SMBJ75A          | SMBJ75CA        | 83.30   | 92.10   | 1.0                    | 5.0  | 75.0  | 5.0  | 121.0  |
| SMBJ78           | SMBJ78C         | 86.70   | 106.00  | 1.0                    | 5.0  | 78.0  | 4.3  | 139.0  |
| SMBJ78A          | SMBJ78CA        | 86.70   | 95.80   | 1.0                    | 5.0  | 78.0  | 4.8  | 126.0  |
| SMBJ80           | SMBJ80C         | 88.90   | 108.80  | 1.0                    | 5.0  | 80.0  | 4.2  | 143.2  |
| SMBJ80A          | SMBJ80CA        | 88.80   | 97.60   | 1.0                    | 5.0  | 80.0  | 4.6  | 129.6  |
| SMBJ85           | SMBJ85C         | 94.40   | 115.00  | 1.0                    | 5.0  | 85.0  | 4.0  | 151.0  |
| SMBJ85A          | SMBJ85CA        | 94.40   | 104.00  | 1.0                    | 5.0  | 85.0  | 4.4  | 137.0  |
| SMBJ90           | SMBJ90C         | 100.00  | 122.00  | 1.0                    | 5.0  | 90.0  | 3.7  | 160.0  |
| SMBJ90A          | SMBJ90CA        | 100.00  | 111.00  | 1.0                    | 5.0  | 90.0  | 4.1  | 146.0  |
| SMBJ100          | SMBJ100C        | 111.00  | 136.00  | 1.0                    | 5.0  | 100.0   | 3.3  | 179.0  |
| SMBJ100A         | SMBJ100CA       | 111.00  | 123.00  | 1.0                    | 5.0  | 100.0   | 3.7  | 162.0  |
| SMBJ110          | SMBJ110C        | 122.00  | 149.00  | 1.0                    | 5.0  | 110.0   | 3.1  | 196.0  |
| SMBJ110A         | SMBJ110CA       | 122.00  | 135.00  | 1.0                    | 5.0  | 110.0   | 3.4  | 177.0  |
| SMBJ120          | SMBJ120C        | 133.00  | 163.00  | 1.0                    | 5.0  | 120.0   | 2.8  | 214.0  |
| SMBJ120A         | SMBJ120CA       | 133.00  | 147.00  | 1.0                    | 5.0  | 120.0   | 3.1  | 193.0  |
| SMBJ130          | SMBJ130CA       | 144.00  | 176.00  | 1.0                    | 5.0  | 130.0   | 2.6  | 231.0  |
| SMBJ130A         | SMBJ130CA       | 144.00  | 159.00  | 1.0                    | 5.0  | 130.0   | 2.9  | 209.0  |
| SMBJ140          | SMBJ140C        | 155.70  | 190.40  | 1.0                    | 5.0  | 140.0   | 2.4  | 250.6  |
| SMBJ140A         | SMBJ140CA       | 155.00  | 171.00  | 1.0                    | 5.0  | 140.0   | 2.6  | 226.8  |
| SMBJ150          | SMBJ150C        | 167.00  | 204.00  | 1.0                    | 5.0  | 150.0   | 2.2  | 268.0  |
| SMBJ150A         | SMBJ150CA       | 167.00  | 185.00  | 1.0                    | 5.0  | 150.0   | 2.5  | 243.0  |
| SMBJ160          | SMBJ160C        | 178.00  | 218.00  | 1.0                    | 5.0  | 160.0   | 2.1  | 287.0  |
| SMBJ160A         | SMBJ160CA       | 178.00  | 197.00  | 1.0                    | 5.0  | 160.0   | 2.3  | 259.0  |
| SMBJ170          | SMBJ170C        | 189.00  | 231.00  | 1.0                    | 5.0  | 170.0   | 2.0  | 304.0  |
| SMBJ170A         | SMBJ170CA       | 189.00  | 209.00  | 1.0                    | 5.0  | 170.0   | 2.2  | 275.0  |
| SMBJ180          | SMBJ180C        | 200.20  | 244.80  | 1.0                    | 5.0  | 180.0   | 1.8  | 322.2  |
| SMBJ180A         | SMBJ180CA       | 200.00  | 220.00  | 1.0                    | 5.0  | 180.0   | 2.1  | 291.6  |
| SMBJ190          | SMBJ190C        | 211.30  | 258.40  | 1.0                    | 5.0  | 190.0   | 1.7  | 340.1  |
| SMBJ190A         | SMBJ190CA       | 211.00  | 232.00  | 1.0                    | 5.0  | 190.0   | 1.9  | 307.8  |
| SMBJ200A         | SMBJ200CA       | 224.00  | 247.00  | 1.0                    | 5.0  | 200.0   | 1.8  | 324.0  |
| SMBJ220A         | SMBJ220CA       | 246.00  | 272.00  | 1.0                    | 5.0  | 220.0   | 1.7  | 356.0  |
| SMBJ250A         | SMBJ250CA       | 279.00  | 309.00  | 1.0                    | 5.0  | 250.0   | 1.5  | 405.0  |
| SMBJ300A         | SMBJ300CA       | 335.00  | 371.00  | 1.0                    | 5.0  | 300.0   | 1.2  | 486.0  |



# SMBJ SERIES

## ■ Electrical Characteristics (T<sub>a</sub>=25°C Unless otherwise specified)

| Part Number(Uni) | Part Number(Bi) | Breakdown Voltage V <sub>BR</sub> @I <sub>T</sub> |         |                                    | Maximum Reverse Leakage<br>I <sub>R</sub> @ V <sub>WM</sub> <sup>(6)</sup> (μA) | Working Peak Reverse Voltage V <sub>RWM</sub> (V) | Maximum Reverse Surge Current IPP <sup>(5)</sup> (A)<br>Min(V) | Maximum Clamping Voltage V <sub>c</sub> @ I <sub>PP</sub> (V)<br>Max (V) |
|------------------|-----------------|---|---------|------------------------------------|---|---|--|--|
|                  |                 | Min(V)  | Max (V) | I <sub>T</sub> <sup>(4)</sup> (mA) |   |   |  |  |
| SMBJ350A         | SMBJ350CA       | 391.00  | 432.00  | 1.0                                | 5.0   | 350.0   | 1.0  | 567.0  |
| SMBJ400A         | SMBJ400CA       | 447.00  | 494.00  | 1.0                                | 5.0   | 400.0   | 0.9  | 648.0  |
| SMBJ440A         | SMBJ440CA       | 492.00  | 543.00  | 1.0                                | 5.0   | 440.0   | 0.8  | 713.0  |

Notes:

- (4) Pulse test: t<sub>p</sub> ≤ 50ms
- (5) Surge current waveform per Fig. 3 and derated per Fig.2.
- (6) For bi-directional types having V<sub>WM</sub> of 10 V and less, the I<sub>R</sub> limit is doubled
- (7) For the bi-directional SMBJ5.0CA, the maximum V<sub>BR</sub> is 7.25 V

## ■ Characteristics (Typical)

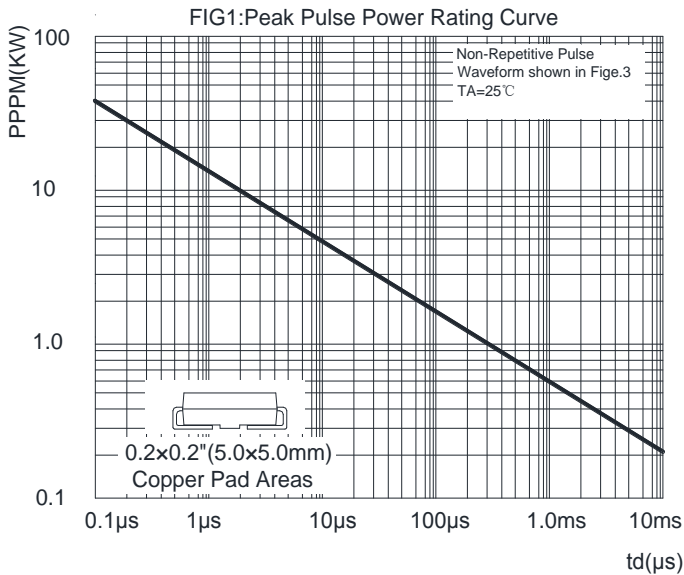
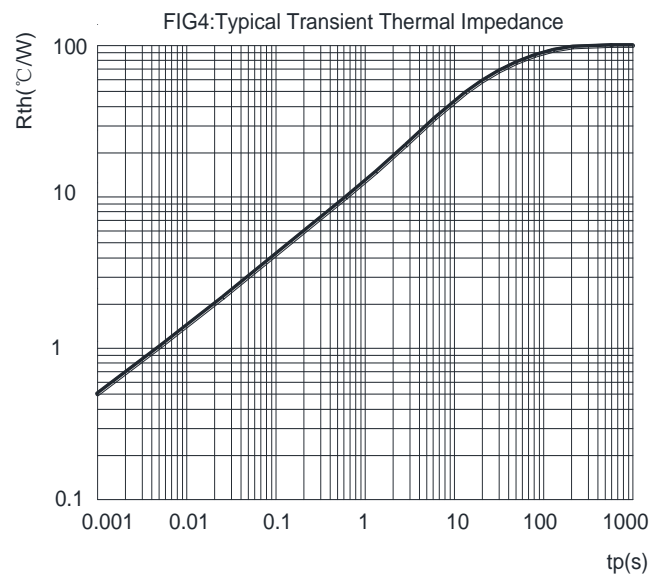
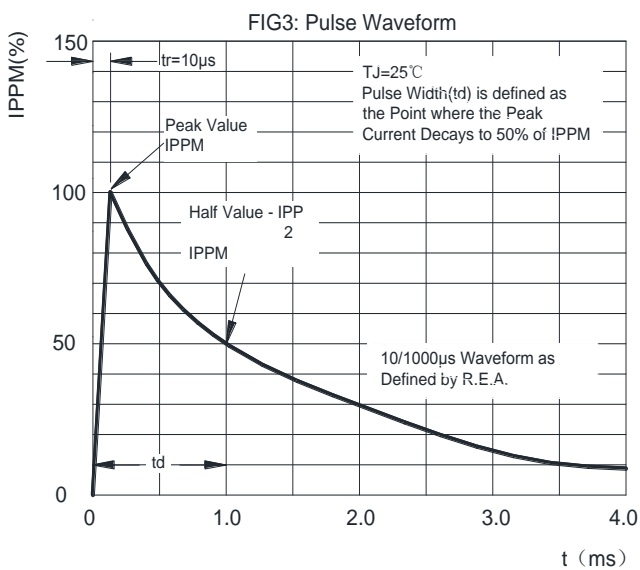
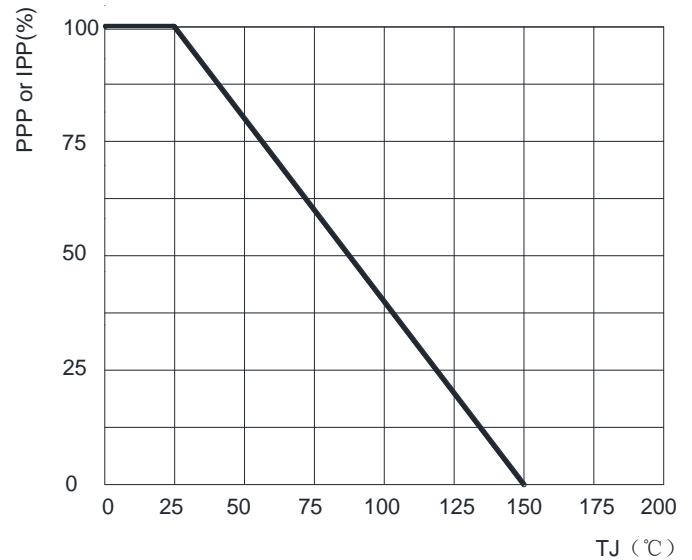
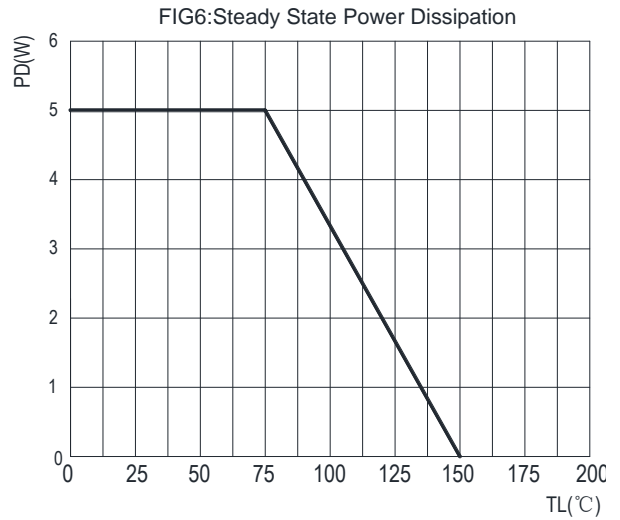
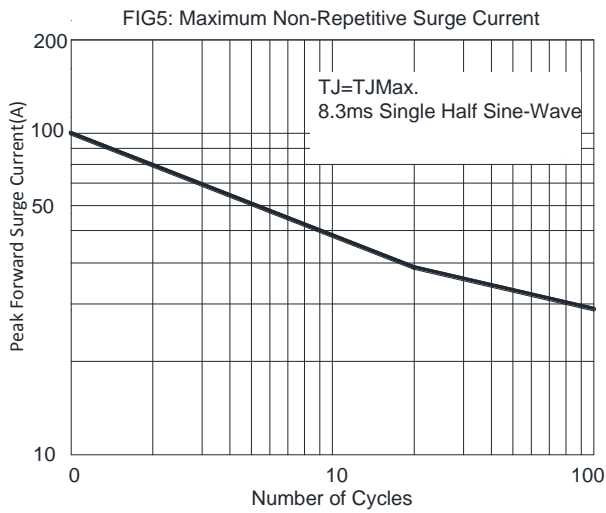


FIG2: Pulse Power or Current vs. Initial Junction Temperature

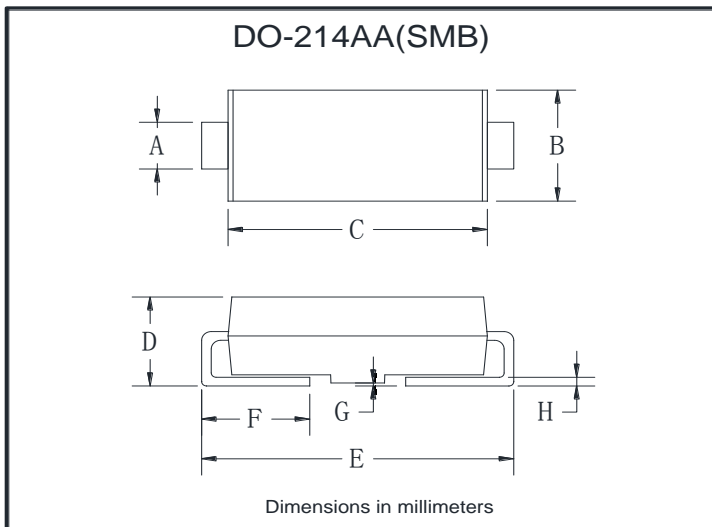




# SMBJ SERIES

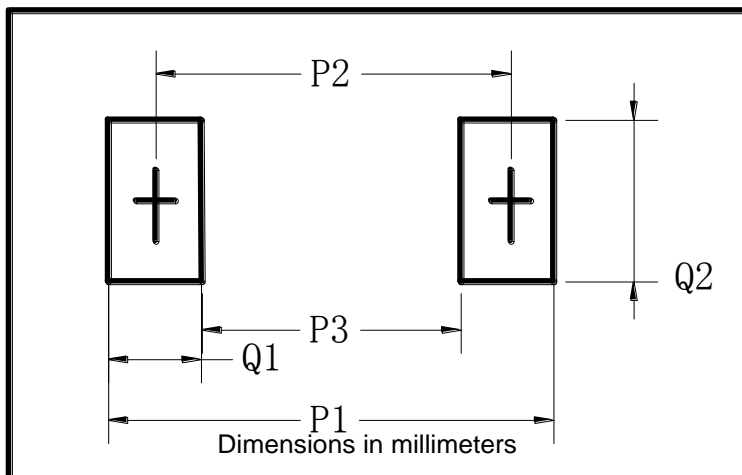


## ■ Outline Dimensions



| DO-214AA(SMB) |      |      |
|---------------|------|------|
| Dim           | Min  | Max  |
| A             | 1.85 | 2.15 |
| B             | 3.30 | 3.94 |
| C             | 4.25 | 4.75 |
| D             | 1.99 | 2.61 |
| E             | 5.21 | 5.59 |
| F             | 0.90 | 1.41 |
| G             | 0.10 | 0.20 |
| H             | 0.15 | 0.31 |

## ■ Suggested pad layout



| DO-214AA(SMB) |             |
|---------------|-------------|
| Dim           | Millimeters |
| P1            | 6.8         |
| P2            | 4.3         |
| P3            | 1.8         |
| Q1            | 2.5         |
| Q2            | 2.3         |



## SMBJ SERIES

---

### Disclaimer

The information presented in this document is for reference only. Yangzhou Yangjie Electronic Technology Co., Ltd. reserves the right to make changes without notice for the specification of the products displayed herein to improve reliability, function or design or otherwise.

The product listed herein is designed to be used with ordinary electronic equipment or devices, and not designed to be used with equipment or devices which require high level of reliability and the malfunction of which would directly endanger human life (such as medical instruments, transportation equipment, aerospace machinery, nuclear-reactor controllers, fuel controllers and other safety devices), Yangjie or anyone on its behalf, assumes no responsibility or liability for any damages resulting from such improper use of sale.

This publication supersedes & replaces all information previously supplied. For additional information, please visit our website [http:// www.21yangjie.com](http://www.21yangjie.com) , or consult your nearest Yangjie's sales office for further assistance.

## X-ON Electronics

Largest Supplier of Electrical and Electronic Components

*Click to view similar products for [ESD Suppressors / TVS Diodes](#) category:*

*Click to view products by [Yangjie](#) manufacturer:*

Other Similar products are found below :

[NTE4902](#) [P4SMAJ15A](#) [P4SMAJ26A](#) [SMAJ400CA-TP](#) [TGL34-47CA](#) [ESDAULC45-1BF4](#) [SM1605E3/TR13](#) [SMF20A-TP](#) [P4SMAJ12A](#)  
[CPDUR24V-HF](#) [CPDQC5V0USP-HF](#) [CPDQC5V0-HF](#) [MPLAD30KP280A](#) [MPLAD30KP45CAE3](#) [MMBZ27VCLQ-7-F](#) [MMAD1108/TR13](#)  
[MPLAD30KP24A](#) [MPLAD30KP30CAE3](#) [ACPDQC5V0R-HF](#) [DFLT170A-7](#) [NTE4900](#) [NTE4926](#) [NTE4938](#) [JANTX1N6144A](#)  
[JANTX1N6057A](#) [SMF22A-TP](#) [SMF12A-TP](#) [SLVU2.8-TP](#) [SMLJ6.5CA-TP](#) [SMAJ6.5CA-TP](#) [MMAD1108E3/TR13](#) [JANTX1N6160A](#)  
[D5V0M1U2LP3-7](#) [SMAJ400A-TP](#) [AOZ8811DT-03](#) [AOZ8831DI-05](#) [AOZ8831DT-03](#) [SMAJ188CA](#) [3SMC33CA BK](#) [CPDQC3V3C-HF](#)  
[CPDQC12VE-HF](#) [GRPADATAJANTX1N6041A](#) [MPLAD30KP170CA](#) [82357120100](#) [5.0SMLJ15CA-TP](#) [5KP18A-TP](#) [P6KE8.2A-TP](#)  
[MPLAD30KP43CAE3](#) [SMAJ43A-TP](#) [D26V0H1U2LP16-7](#)