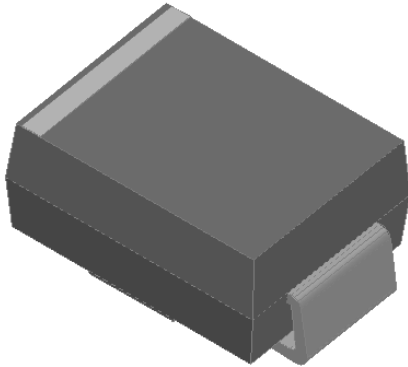


Surface Mount Schottky Rectifier

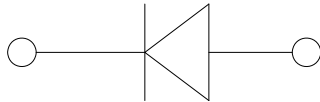


Features

- Low profile package
- Ideal for automated placement
- Guardring for overvoltage protection
- Low power losses, high efficiency
- High forward surge capability
- Meets MSL level 1, per J-STD-020, LF maximum peak of 260 °C
- Part no. with suffix "Q" means AEC-Q101 qualified

Typical Applications

For use in low voltage high frequency inverters, freewheeling, DC/DC converters, automotive and polarity protection applications.



Mechanical Data

- **Package:** DO-214AA (SMB)
Molding compound meets UL 94 V-0 flammability rating, RoHS-compliant, halogen-free
- **Terminals:** Tin plated leads, solderable per J-STD-002 and JESD22-B102
- **Polarity:** Cathode line denotes the cathode end

■ Maximum Ratings (T_a=25°C Unless otherwise specified)

| PARAMETER | SYMBOL | UNIT | SS215Q | SS220Q |
|-----------------------------------------------------------------------------------------|------------------|------|-----------|--------|
| Device marking code | | | SS215 | SS220 |
| Repetitive peak reverse voltage | V _{RRM} | V | 150 | 200 |
| Maximum RMS voltage | V _{RMS} | V | 105 | 140 |
| Maximum DC blocking voltage | V _{DC} | V | 150 | 200 |
| Maximum average forward rectified current at T _L (Fig.1) | I _O | A | 2.0 | |
| Surge(non-repetitive)forward current @60Hz half-sine wave,1 cycle, T _J =25°C | I _{FSM} | A | 75 | |
| Voltage rate of change (rated V _R) | dV/dt | V/μs | 10000 | |
| Storage temperature | T _{stg} | °C | -55 ~+175 | |
| Junction temperature | T _J | °C | -55 ~+175 | |

■ Electrical Characteristics(T_a=25°C Unless otherwise specified)

| PARAMETER | SYMBOL | TEST CONDITIONS | TYP | MAX | UNIT | |
|-------------------------------|----------------|---------------------------|-----------------------|------|------|----|
| Instantaneous forward voltage | V _F | I _F =2A | T _J =25°C | 0.82 | 0.9 | V |
| | | | T _J =125°C | - | 0.75 | |
| Reverse current | I _R | Rated V _R | T _J =25°C | - | 5 | μA |
| | | | T _J =125°C | 15 | 150 | |
| Typical junction capacitance | C _J | V _R =4V,f=1MHz | 40 | - | pF | |



SS215Q THRU SS220Q

■ Thermal Characteristics (T_a=25°C Unless otherwise specified)

| PARAMETER | SYMBOL | UNIT | SS215Q | SS220Q |
|--------------------|-------------------|------|-------------------|--------|
| Thermal Resistance | R _{θJ-A} | °C/W | 75 ⁽¹⁾ | |
| | R _{θJ-L} | | 17 ⁽¹⁾ | |

Note:
 (1) Thermal resistance from junction to ambient and from junction to lead mounted on P.C.B. with 0.2" x 0.2" (5.0 mm x 5.0 mm) copper pad areas

■ Characteristics(Typical)

Fig.1:Forward Current Derating Curve

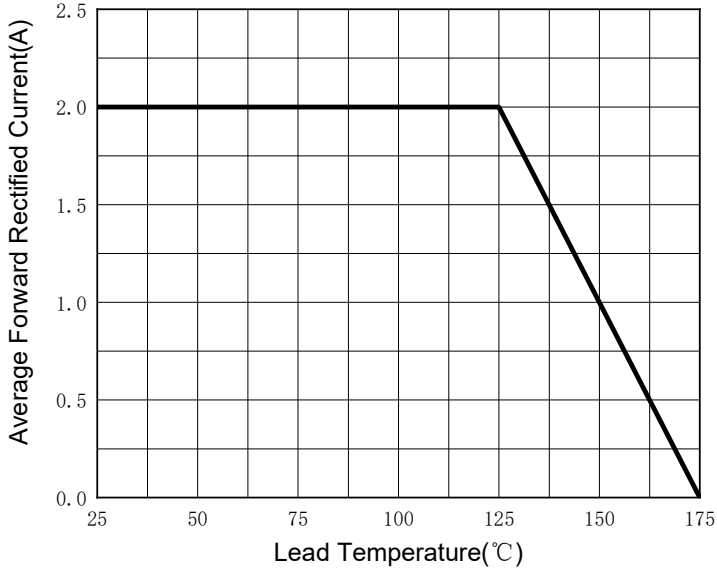


Fig.2:Maximum Non-Repetitive Peak Forward Surge Current

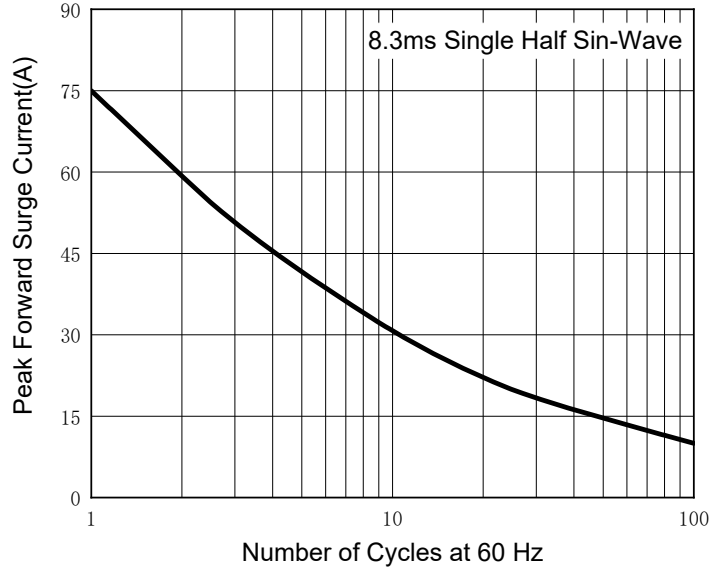


Fig.3:Typical Instantaneous Forward Characteristics

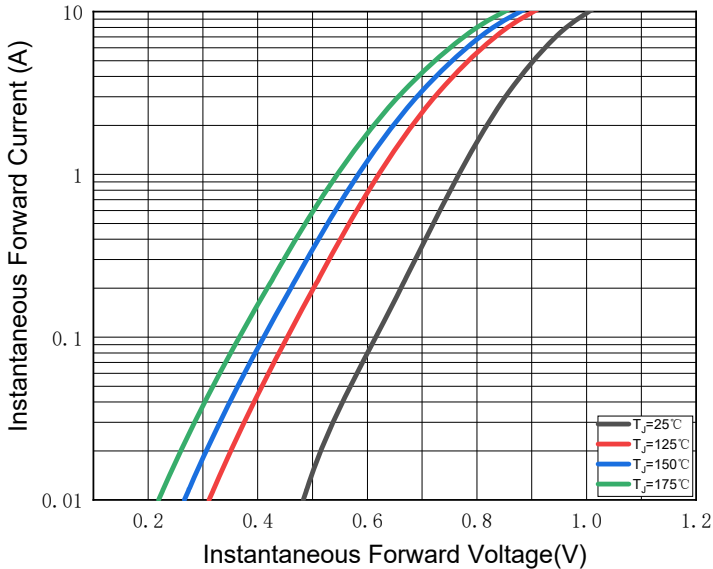
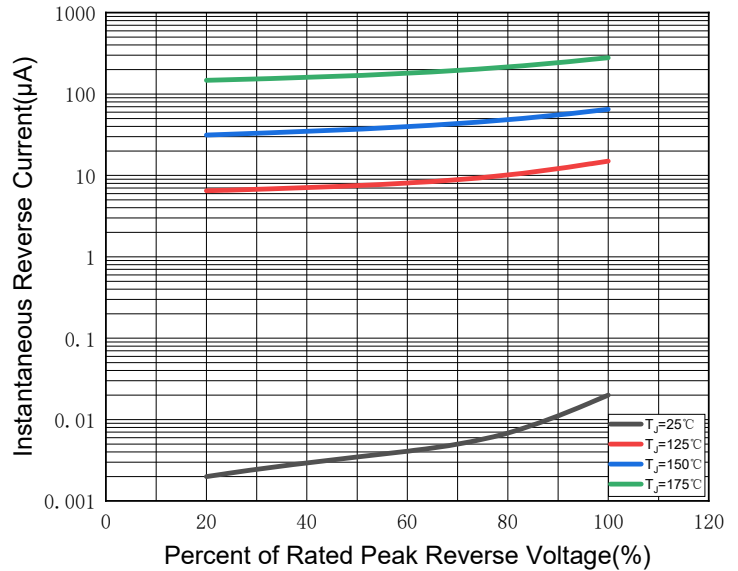


Fig.4:Typical Reverse Leakage Characteristics



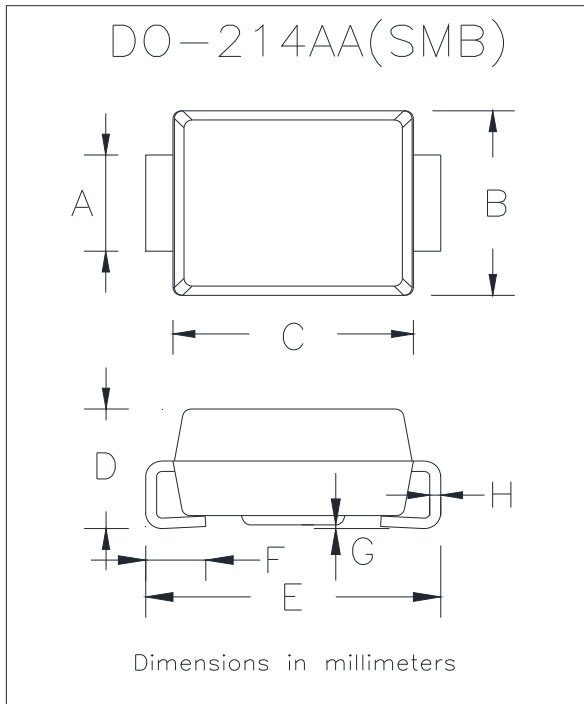
■ Ordering Information (Example)

| PREFERRED P/N | PACKING CODE | UNIT WEIGHT(g) | MINIMUM PACKAGE(pcs) | OUTER CARTON QUANTITY(pcs) | DELIVERY MODE |
|---------------|--------------|--------------------|----------------------|----------------------------|---------------|
| SS215Q-SS220Q | F1 | Approximate 0.1003 | 3000 | 48000 | 13" reel |



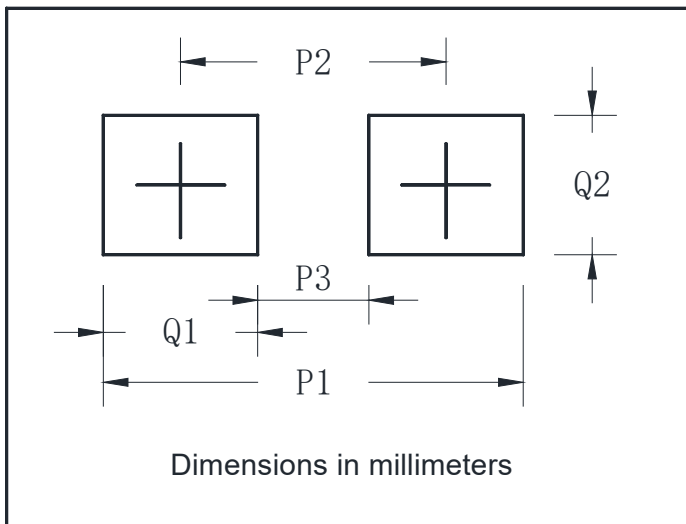
SS215Q THRU SS220Q

■ Outline Dimensions



| DO-214AA(SMB) | | |
|---------------|------|------|
| Dim | Min | Max |
| A | 1.85 | 2.15 |
| B | 3.30 | 3.94 |
| C | 4.05 | 4.75 |
| D | 1.99 | 2.61 |
| E | 5.21 | 5.59 |
| F | 0.90 | 1.41 |
| G | 0.05 | 0.20 |
| H | 0.15 | 0.31 |

■ Suggested pad layout



| DO-214AA(SMB) | |
|---------------|-------------|
| Dim | Millimeters |
| P1 | 6.8 |
| P2 | 4.3 |
| P3 | 1.8 |
| Q1 | 2.5 |
| Q2 | 2.3 |



SS215Q THRU SS220Q

Disclaimer

The information presented in this document is for reference only. Yangzhou Yangjie Electronic Technology Co., Ltd. reserves the right to make changes without notice for the specification of the products displayed herein to improve reliability, function or design or otherwise.

The product listed herein is designed to be used with automotive electronics, are not designed for use in medical, lifesaving, lifesustaining, or military, Yangjie or anyone on its behalf, assumes no responsibility or liability for any damages resulting from such improper use of sale.

This publication supersedes & replaces all information previously supplied. For additional information, please visit our website [http:// www.21yangjie.com](http://www.21yangjie.com) , or consult your nearest Yangjie's sales office for further assistance.

X-ON Electronics

Largest Supplier of Electrical and Electronic Components

Click to view similar products for [Schottky Diodes & Rectifiers](#) category:

Click to view products by [Yangjie](#) manufacturer:

Other Similar products are found below :

[MA4E2039](#) [MA4E2508M-1112](#) [MBR1545CT](#) [MMBD301M3T5G](#) [RB160M-50TR](#) [D83C](#) [BAS16E6433HTMA1](#) [BAT 54-02LRH E6327](#)
[NRVBAF360T3G](#) [NSR05F40QNXT5G](#) [NTE555](#) [JANS1N6640](#) [SK310-T](#) [SS3003CH-TL-E](#) [GA01SHT18](#) [CRS10I30A\(TE85L,QM](#)
[MA4E2501L-1290](#) [MBRA140TRPBF](#) [MBRB30H30CT-1G](#) [BAT 15-04R E6152](#) [JANTX1N5712-1](#) [DMJ3940-000](#) [SB007-03C-TB-E](#)
[SK33B-TP](#) [NRVBB20100CTT4G](#) [NRVBM120LT1G](#) [NTSB30U100CT-1G](#) [VS-6CWQ10FNHM3](#) [CRG04\(T5L,TEMQ\)](#) [ACDBA1100LR-HF](#)
[ACDBA1200-HF](#) [ACDBA240-HF](#) [ACDBA3100-HF](#) [CDBQC0530L-HF](#) [CDBQC0240LR-HF](#) [ACDBA260LR-HF](#) [ACDBA1100-HF](#)
[MA4E2502L-1246](#) [10BQ015-M3/5BT](#) [NRVBM120ET1G](#) [CRS08TE85LQM](#) [PMAD1108-LF](#) [B120Q-13-F](#) [1N5819T-G](#) [B0530WSQ-7-F](#)
[PDS1040Q-13](#) [B160BQ-13-F](#) [SDM05U20CSP-7](#) [B140S1F-7](#) [HSM560Je3/TR13](#)