

# Crystal Unit

## HC-49SMD



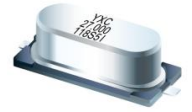
### Applications

- Industrial Control Consumers.

### Features

- Dimensions: 11.5 x 4.80 x 3.8mm.
- Standard Frequency: 3.2768~64MHz

- Surface mount type crystal units.
- A great number of standard frequencies.



## Specifications (规格参数)

Item	Symbol	Specifications
Nominal Frequency Range (额定频率范围)	f_nom	3.2768~64MHz
Vibration Mode (震动模式)	-	AT Fundamental
Load Capacitance (负载电容)	CL	12pF, 20pF, or specify
Frequency Tolerance (频率偏差) (at 25°C)	f_tol	±10ppm, ±20ppm, or specify
Frequency Versus Temperature Characteristics (频率-温度特性)	f_tem	±20ppm, or specify
Operating Temperature (工作温度)	T_use	-20~+70°C, or specify
Storage Temperature (储存温度)	T_stg	-40~+85°C
Shunt Capacitance (静态电容)	C0	7pF Max.
Level of Drive (激励电平)	DL	1~500μW Max.(100μW typical)
Aging (老化) (at 25°C)	f_age	±3ppm/year Max.

## Equivalent Series Resistance (等效串联电阻(ESR))

HC-49SMD			
3.2768 ~ 4MHz	180 Ω Max.	6 ~ 7MHz	80 Ω Max.
4 ~ 5MHz	120 Ω Max.	7 ~ 10MHz	60 Ω Max.
5 ~ 6 MHz	100 Ω Max.	10 ~ 30MHz	40 Ω Max.

## Dimensions and Recommended land pattern (外观尺寸及推荐焊盘)

Dimensions (Unit: mm)	Recommended land pattern(Unit: mm)
<p>Side View dimensions: 11.4 ± 0.05, 10.6 MAX, 0.3 ± 0.1, 4.35 ± 0.5, 3.8 ± 0.5, 3.3 ± 0.3, 3.8 ± 0.3, 1.0 MAX.</p> <p>Bottom View dimensions: 0.5 ± 0.2, 0.5 ± 0.2, 0.8 ± 0.2, 4.8 MAX, 4.5 MAX, 4.88 MAX, 4.5 MAX, 12.7 ± 0.5.</p>	<p>Recommended land pattern dimensions: 5.5, 4.0, 5.5, 2.0.</p>

## X-ON Electronics

Largest Supplier of Electrical and Electronic Components

*Click to view similar products for [Crystals](#) category:*

*Click to view products by [Yangxing](#) manufacturer:*

Other Similar products are found below :

[CX3225GB25000M0PPSZ1](#) [718-13.2-1](#) [7A-40.000MAAE-T](#) [FL2000085](#) [99-BU](#) [9B-15.360MBBK-B](#) [9C-7.680MBBK-T](#) [H10S-12.000-18-EXT-TR](#) [ABC2-6.000MHZ-D4Z-T](#) [ABLS-20.000MHZ-D2-T](#) [ABM3B-27.000MHZ-D4Y-T](#) [ABS071-32.768KHZ-6-T](#) [R38-32.768-12.5-5PPM-NPB](#) [BTD1062E05A-513](#) [21U15A-21.4MHZ](#) [RTX-781DF1-S-20.950](#) [LFXTAL066198Cutt](#) [9C-14.31818MBBK-T](#) [A-11.000MHZ-27](#) [ABL-27.000MHZ-B4Y-T](#) [ABM11-132-24.000MHZ-T3](#) [ABM3B1-25.000MHZ-D2Y-T](#) [SPT2A-.032768B](#) [SPT2A.032768G](#) [SSPT7F-9PF20-R](#) [LFXTAL065253Cutt](#) [LFXTAL066431Cutt](#) [XT9S20ANA14M7456](#) [XT9SNLANA16M](#) [7A-24.576MBBK-T](#) [7B-30.000MBBK-T](#) [MMCC2R32.7680KHZ](#) [7A-14.31818MBBK-T](#) [6504-202-1501](#) [6526-202-1501](#) [ABLS-12.000MHZ-B2Y-T](#) [7A-10.000MBBK-T](#) [SG636PCE-20.000MC](#) [3404](#) [E1SAA18-25.000M](#) [TR](#) [CM315D32768EZFT](#) [C1E-24.000-7-2020-R](#) [C1E-19.200-12-1530-X-R](#) [C1E-16.000-12-1530-X-R](#) [ABM11-16.000MHZ-9-B1U-T](#) [FL5000014](#) [EUCA18-3.1872M](#) [FX0800015](#) [425F35E027M0000](#) [FP0800018](#)