

Crystal Unit

HC-49SMD



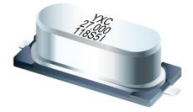
Applications

- Industrial Control Consumers.

Features

- Dimensions: 11.5 x 4.80 x 3.8mm.
- Standard Frequency: 3.2768~64MHz

- Surface mount type crystal units.
- A great number of standard frequencies.



Specifications (规格参数)

| Item | Symbol | Specifications |
|--|--------|-----------------------------|
| Nominal Frequency Range (额定频率范围) | f_nom | 3.2768~64MHz |
| Vibration Mode (震动模式) | - | AT Fundamental |
| Load Capacitance (负载电容) | CL | 12pF, 20pF, or specify |
| Frequency Tolerance (频率偏差) (at 25°C) | f_tol | ±10ppm, ±20ppm, or specify |
| Frequency Versus Temperature Characteristics (频率-温度特性) | f_tem | ±20ppm, or specify |
| Operating Temperature (工作温度) | T_use | -20~+70°C, or specify |
| Storage Temperature (储存温度) | T_stg | -40~+85°C |
| Shunt Capacitance (静态电容) | C0 | 7pF Max. |
| Level of Drive (激励电平) | DL | 1~500μW Max.(100μW typical) |
| Aging (老化) (at 25°C) | f_age | ±3ppm/year Max. |

Equivalent Series Resistance (等效串联电阻(ESR))

| HC-49SMD | | | |
|---------------|------------|------------|-----------|
| 3.2768 ~ 4MHz | 180 Ω Max. | 6 ~ 7MHz | 80 Ω Max. |
| 4 ~ 5MHz | 120 Ω Max. | 7 ~ 10MHz | 60 Ω Max. |
| 5 ~ 6 MHz | 100 Ω Max. | 10 ~ 30MHz | 40 Ω Max. |

Dimensions and Recommended land pattern (外观尺寸及推荐焊盘)

| Dimensions (Unit: mm) | Recommended land pattern(Unit: mm) |
|---|---|
| <p>Side View dimensions: 11.4 ± 0.05, 10.6 MAX, 0.3 ± 0.1, 4.35 ± 0.5, 3.8 ± 0.5, 3.3 ± 0.3, 3.8 ± 0.3, 1.0 MAX.</p> <p>Bottom View dimensions: 0.5 ± 0.2, 0.5 ± 0.2, 0.8 ± 0.2, 4.8 MAX, 4.5 MAX, 4.88 MAX, 4.5 MAX, 12.7 ± 0.5.</p> | <p>Recommended land pattern dimensions: 5.5, 4.0, 5.5, 2.0.</p> |

X-ON Electronics

Largest Supplier of Electrical and Electronic Components

Click to view similar products for [Crystals](#) category:

Click to view products by [Yangxing](#) manufacturer:

Other Similar products are found below :

[CX3225GB25000M0PPSZ1](#) [718-13.2-1](#) [7A-40.000MAAE-T](#) [FL2000085](#) [99-BU](#) [9B-15.360MBBK-B](#) [9C-7.680MBBK-T](#) [H10S-12.000-18-EXT-TR](#) [ABC2-6.000MHZ-D4Z-T](#) [ABLS-20.000MHZ-D2-T](#) [ABM3B-27.000MHZ-D4Y-T](#) [ABS071-32.768KHZ-6-T](#) [R38-32.768-12.5-5PPM-NPB](#) [BTD1062E05A-513](#) [21U15A-21.4MHZ](#) [RTX-781DF1-S-20.950](#) [LFXTAL066198Cutt](#) [9C-14.31818MBBK-T](#) [A-11.000MHZ-27](#) [ABL-27.000MHZ-B4Y-T](#) [ABM11-132-24.000MHZ-T3](#) [ABM3B1-25.000MHZ-D2Y-T](#) [SPT2A-.032768B](#) [SPT2A.032768G](#) [SSPT7F-9PF20-R](#) [LFXTAL065253Cutt](#) [LFXTAL066431Cutt](#) [XT9S20ANA14M7456](#) [XT9SNLANA16M](#) [7A-24.576MBBK-T](#) [7B-30.000MBBK-T](#) [MMCC2R32.7680KHZ](#) [7A-14.31818MBBK-T](#) [6504-202-1501](#) [6526-202-1501](#) [ABLS-12.000MHZ-B2Y-T](#) [7A-10.000MBBK-T](#) [SG636PCE-20.000MC](#) [3404](#) [E1SAA18-25.000M](#) [TR](#) [CM315D32768EZFT](#) [C1E-24.000-7-2020-R](#) [C1E-19.200-12-1530-X-R](#) [C1E-16.000-12-1530-X-R](#) [ABM11-16.000MHZ-9-B1U-T](#) [FL5000014](#) [EUCA18-3.1872M](#) [FX0800015](#) [425F35E027M0000](#) [FP0800018](#)