

1

PART NO.
AND CH. CODE

7116-4020, [B] \triangle_{A} (7B16-4020, [B])

7116-4021, [B] \triangle_{A} (7B16-4021, [B])

7116-4022, [B] \triangle_{A} (7B16-4022, [B])

2

WIRE SIZE

\triangle_{A} CHFUS 0.35~AVS 0.50 EQUIVALENT

\triangle_{A} CHFUS 0.75~AVS 1.25 EQUIVALENT

AVSS 2 EQUIVALENT

3

MATERIAL

\triangle_{A} BRASS (t=0.25)

\triangle_{A} BRASS (t=0.25)

\triangle_{A} COPPER ALLOY (t=0.25)

注記

\triangle_{A} 1. () 内品番は、エアバッグ (A/B) 回路及び特別

管理回路に使用する時に適用すること。

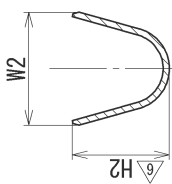
\triangle_{A} 2. 取扱説明書No. YPES-15-080

NOTES

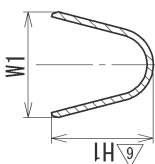
\triangle_{A} 1. PART NUMBERS IN PARENTHESIS SHALL BE USED FOR AIR BAG (A/B)

CIRCUITS AND OTHER CIRCUITS DESIGNATED FOR SPECIAL MONITORING.

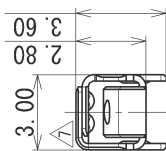
\triangle_{A} 2. HANDLING MANUAL NO. YPES-15-080



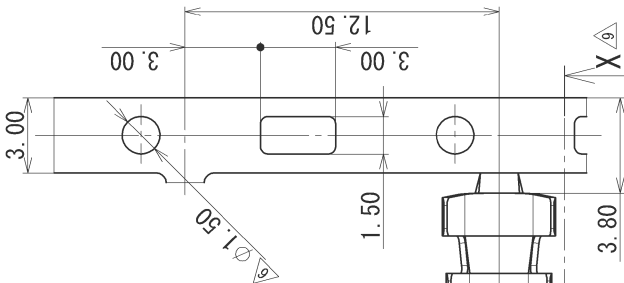
SEC. Q-Q



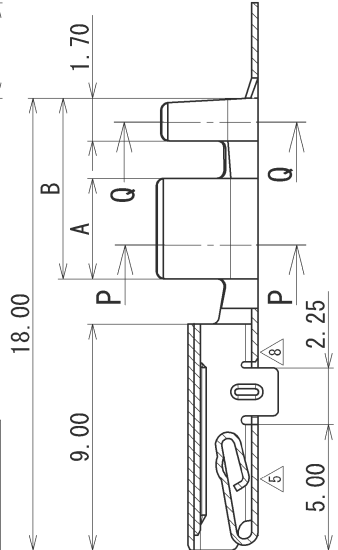
SEC. P-P



SEC. X-X



\triangle_{A} DISTINGUISH OF STAMP
識別用の刻印(□0.8)



SEC. X-X

MATL. SPEC.	SEE TABLE	TREAT. & FIN.	TIN PLATING
CUSTOMER PART NO.	CUSTOMER DWG NO.		
OFFICE	TRIAL PART NO.		
VENDOR	VENDOR NO.		
GENERAL TOLERANCE			
10MAX	50MAX	100MAX	250MAX 2500VR
A	± 0.15	± 0.2	± 0.3 ± 0.5 ± 0.75 $\pm 30'$
B	± 0.2	± 0.3	± 0.55 ± 0.95 ± 1.4 $\pm 30'$
C	± 0.3	± 0.5 ± 0.8 ± 1.4	± 2 $\pm 30'$ ± 15
SPECIFIED MASS			
LET	DATE	REVISION RECORD NO.	CHKD
PART NO. AND CH. CODE		PART NO.	CH. CODE
7116-4020, [B] \triangle_{A} (7B16-4020, [B])		7116-4020 ETC. \triangle_{A} (7B16-4020 ETC.)	SET DWG NO.
		7116-4020:R	
		YAZAKI CORPORATION	

1

1

2

3

X-ON Electronics

Largest Supplier of Electrical and Electronic Components

Click to view similar products for [Terminals](#) category:

Click to view products by [Yazaki](#) manufacturer:

Other Similar products are found below :

[00-054007-01074-6](#) [00-054007-70206-1](#) [00-054007-70210-8](#) [00-054007-70217-7](#) [00-054007-70228-3](#) [00-054007-70256-6](#) [00-054007-70316-7](#) [00-054007-49560-4](#) [00-054007-70209-2](#) [00-054007-70231-3](#) [00-054007-70241-2](#) [00-054007-70242-9](#) [00-054007-70246-7](#) [00-054007-70263-4](#) [00-054007-70288-7](#) [00-054007-70290-0](#) [00-054007-70300-6](#) [00-054007-70304-4](#) [01-2900-1-04412](#) [00581P0075](#) [600TS-10](#) [605601-1](#) [60598-1-CUT-TAPE](#) [60617-1-C](#) [61314-6-C](#) [61810-3](#) [62149-1](#) [626-0194](#) [63-S](#) [M55155/059I03](#) [M55155/079C01](#) [M55155/099B03](#) [M55155/099H02](#) [M55155/109H01](#) [M55155/12XH05](#) [M55155/29-5S](#) [M55155/29XJ08](#) [M55155/30-6S](#) [M55155/30-9S](#) [M55155/30XI09](#) [M6-14RSX](#) [696683-1](#) [696861-1](#) [696999-1](#) [M86700006](#) [D18-110B-C](#) [D18-110B-M](#) [701-1936](#) [701-1955](#) [701-2003](#)